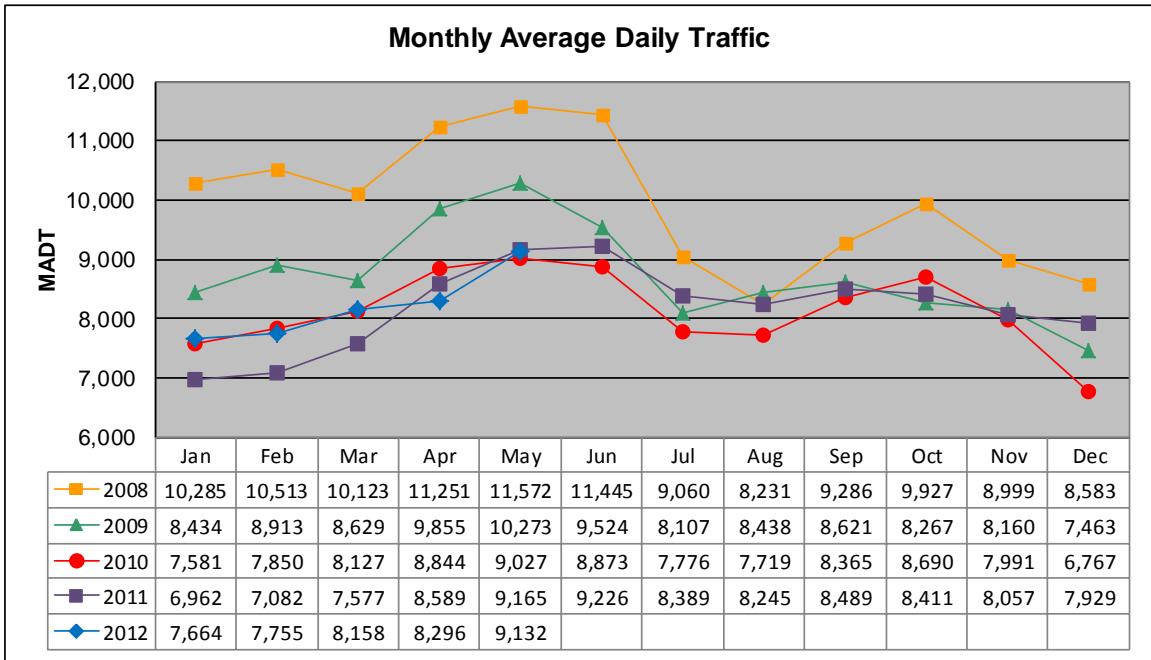


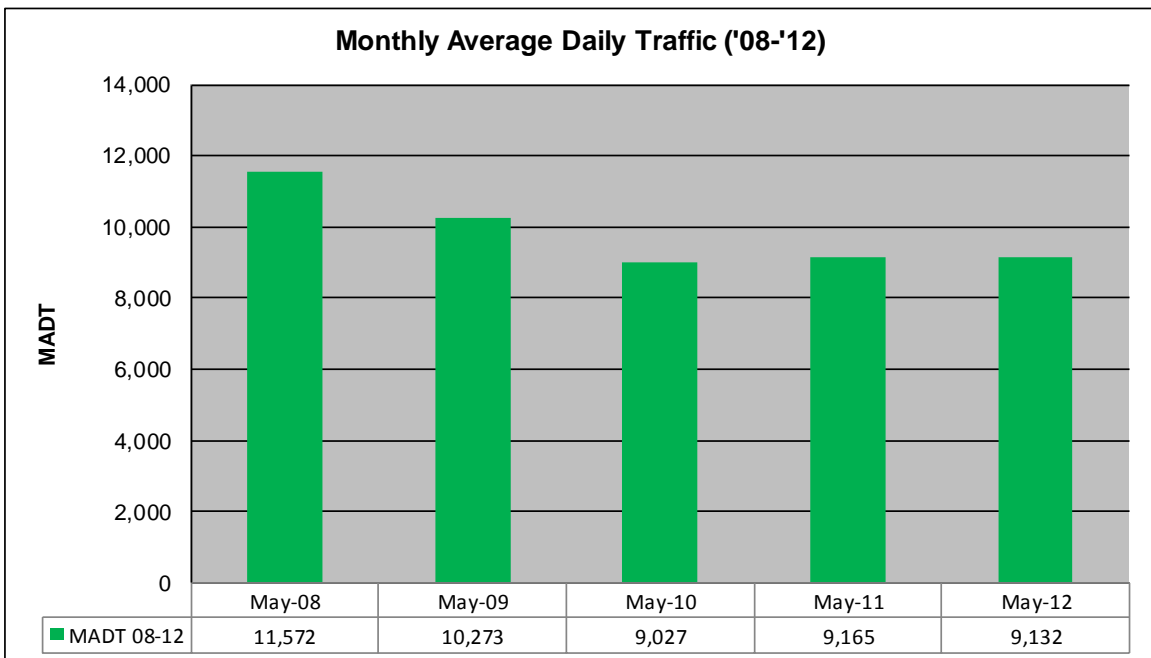
# MONTHLY REPORT, STATION NO. 458 (ATR)

## MAY 2012

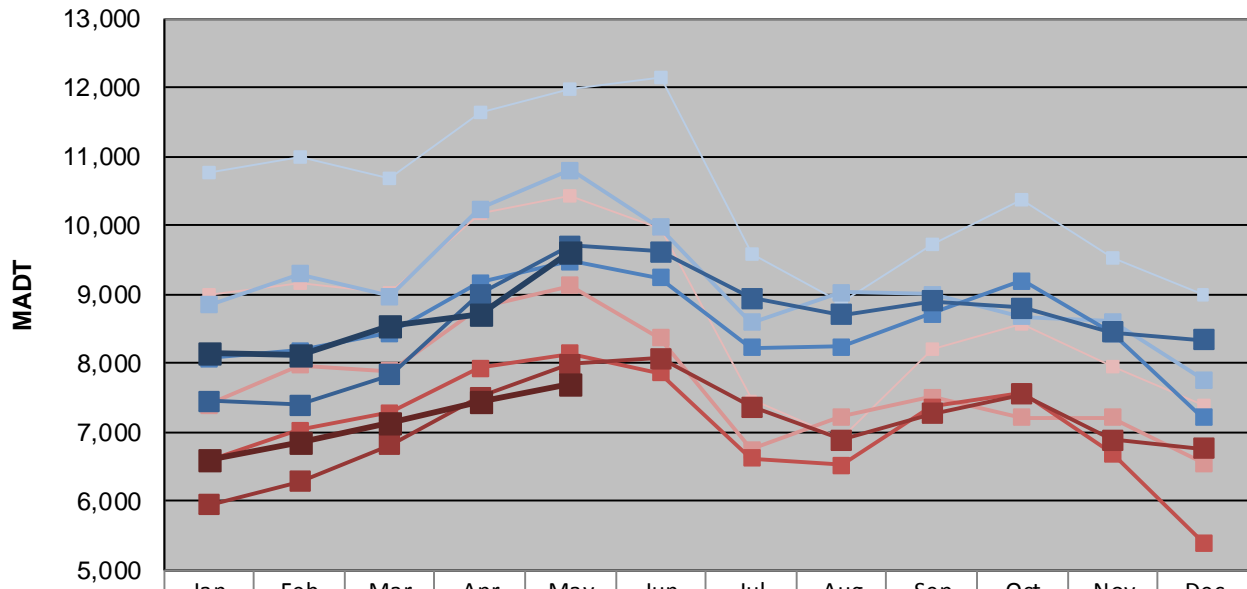
Station Measurement: VOLUME		
Route: MSAS 108	Route Direction: E/W	Lanes: 2
County: Carver	Closest City: Chaska	
Functional Class: Urban Local		
Location: .3 MI W OF TH41 IN CHASKA		
Ref Post: 001+00.210	True Mile: 1.21	Sequence No. 9907
<b>Volume: 283,086</b>		<b>MADT: 9,132</b>
<b>Weekday (M-F) MADT: 9,610</b>		<b>Weekend (Sa-Su) MADT: 7,702</b>



Note: Decrease in traffic July to September 2008 and August 2010 due to construction on MSAS 108



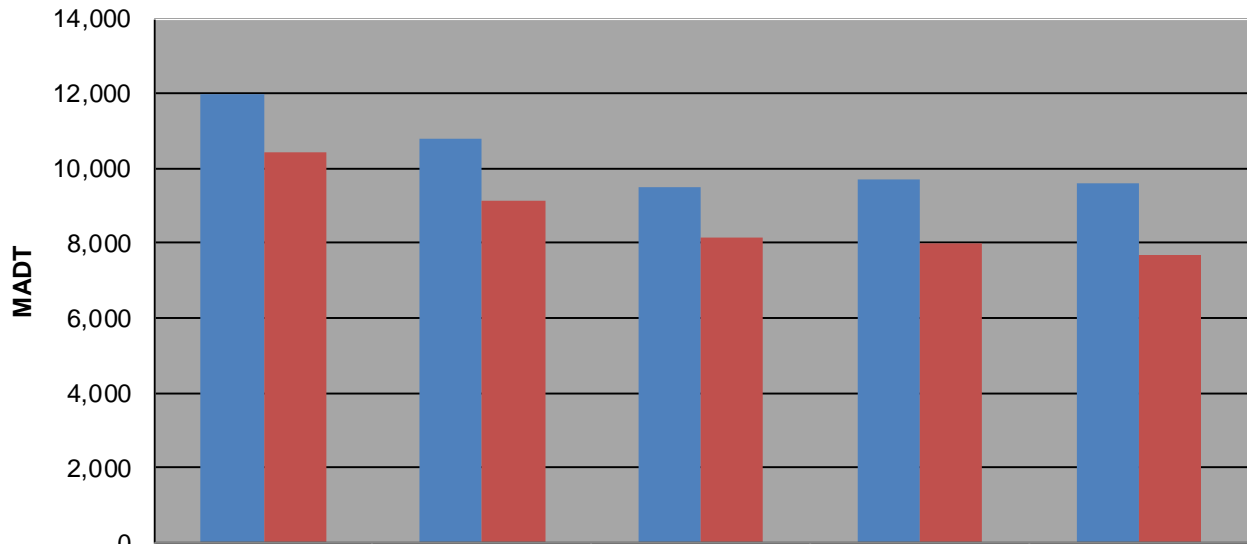
### Weekday (WD)/Weekend (WE) Monthly Average Daily Traffic



	Jan	Feb	Mar	Apr	May	Jun	Jul	Aug	Sep	Oct	Nov	Dec
'08 WD	10,758	11,002	10,668	11,642	11,964	12,132	9,574	8,872	9,716	10,378	9,518	8,994
'08 WE	8,998	9,168	9,022	10,164	10,434	9,942	7,466	6,912	8,216	8,564	7,962	7,376
'09 WD	8,840	9,290	8,968	10,232	10,806	9,964	8,588	9,024	9,004	8,676	8,602	7,764
'09 WE	7,396	7,968	7,886	8,818	9,122	8,372	6,742	7,220	7,506	7,210	7,206	6,544
'10 WD	8,068	8,176	8,430	9,164	9,476	9,236	8,224	8,234	8,710	9,202	8,438	7,216
'10 WE	6,584	7,030	7,280	7,932	8,144	7,856	6,622	6,520	7,368	7,578	6,686	5,402
'11 WD	7,448	7,392	7,834	8,998	9,708	9,616	8,942	8,698	8,896	8,808	8,454	8,342
'11 WE	5,950	6,282	6,814	7,500	7,978	8,066	7,368	6,888	7,266	7,550	6,886	6,760
'12 WD	8,152	8,110	8,538	8,718	9,610							
'12 WE	6,606	6,858	7,146	7,456	7,702							

Note: 'Weekday' defined as Monday-Friday, 'Weekend' defined as Saturday-Sunday

### Weekday/Weekend Monthly Average Daily Traffic ('08-'12)



	May-08	May-09	May-10	May-11	May-12
Weekday	11,964	10,806	9,476	9,708	9,610
Weekend	10,434	9,122	8,144	7,978	7,702