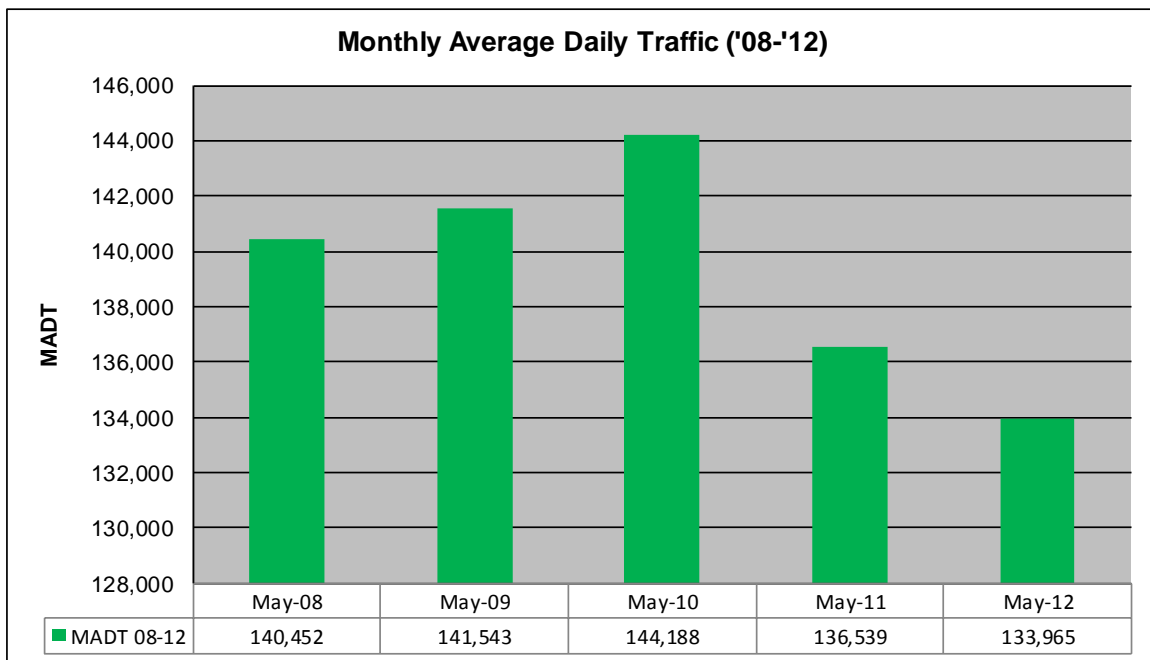
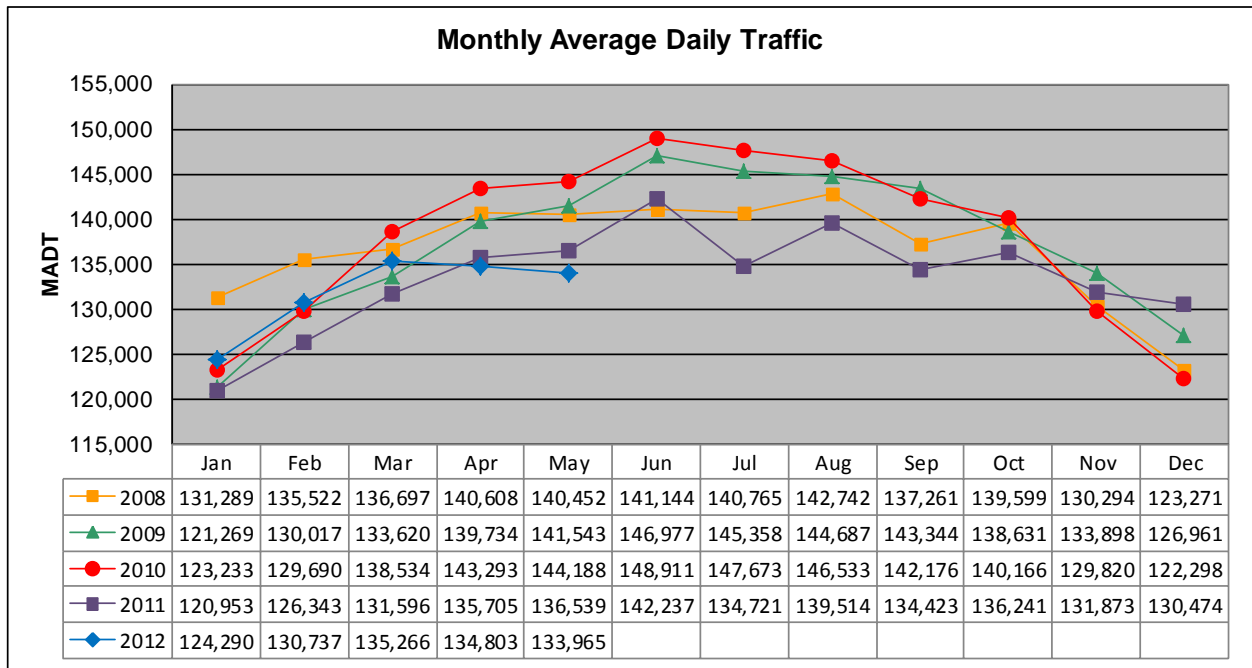


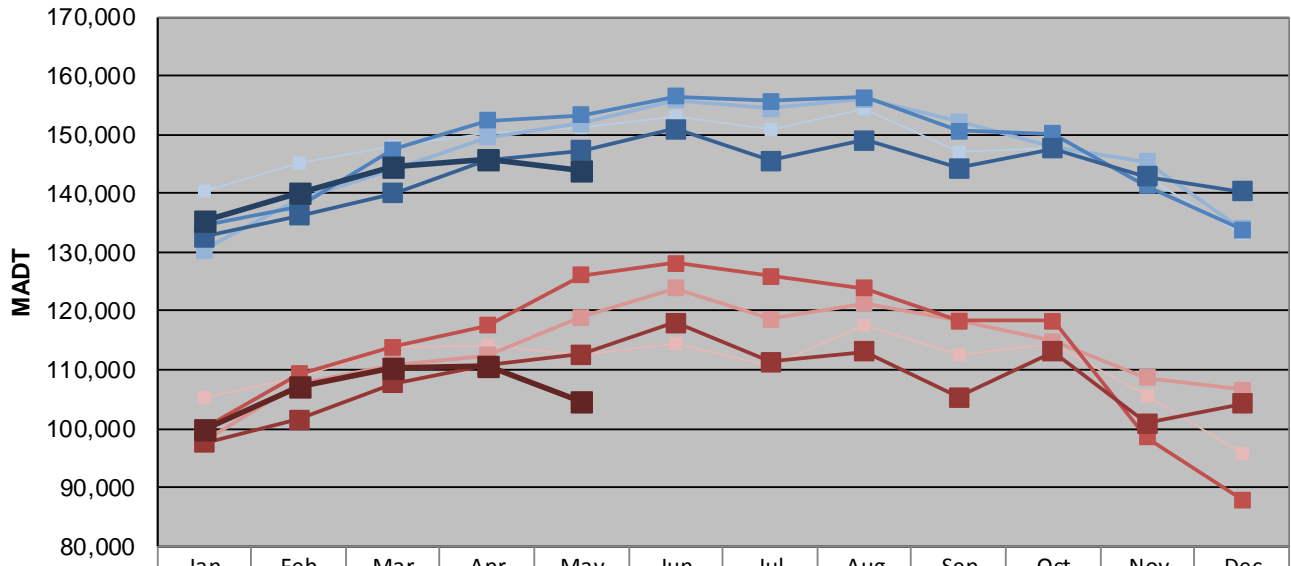
MONTHLY REPORT, STATION NO. 303 (ATR)

MAY 2012

Station Measurement: VOLUME		
Route: I-35E	Route Direction: N/S	Lanes: 6
County: Ramsey		Closest City: St Paul
Functional Class: Urban Principal Arterial - Interstate		
Location: S OF MSAS109 (E ARLINGTON AVE) IN ST PAUL		
Ref Post: 109+00.835	True Mile: 109.893	Sequence No. 9836
Volume: 4,152,930		MADT: 133,965
Weekday (M-F) MADT: 143,978		Weekend (Sa-Su) MADT: 104,494



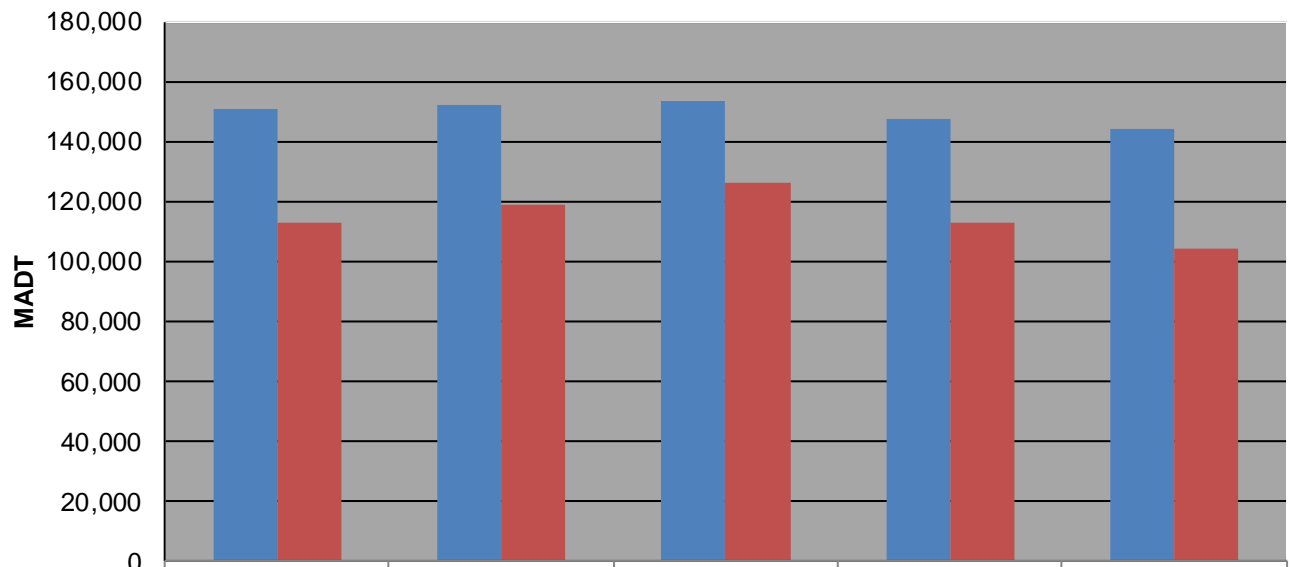
Weekday (WD)/Weekend (WE) Monthly Average Daily Traffic



	Jan	Feb	Mar	Apr	May	Jun	Jul	Aug	Sep	Oct	Nov	Dec
'08 WD	140,516	145,284	148,086	150,140	151,052	153,124	150,834	154,368	146,954	147,852	142,588	133,140
'08 WE	105,324	108,648	113,814	114,086	112,500	114,472	110,692	117,708	112,464	114,538	105,706	95,638
'09 WD	130,306	138,958	143,902	149,594	151,850	155,780	154,380	156,006	152,272	147,722	145,332	133,928
'09 WE	97,868	107,664	110,874	112,502	119,016	123,826	118,576	121,336	118,496	114,850	108,636	106,582
'10 WD	134,406	137,836	147,454	152,314	153,384	156,518	155,706	156,284	150,554	150,100	141,288	133,810
'10 WE	99,982	109,324	113,960	117,588	126,018	128,078	125,904	123,924	118,322	118,400	98,586	87,980
'11 WD	132,586	136,270	140,092	145,776	147,338	150,904	145,518	148,998	144,306	147,592	142,806	140,374
'11 WE	97,638	101,502	107,680	110,742	112,630	118,000	111,382	113,168	105,360	113,044	100,982	104,194
'12 WD	135,318	139,948	144,506	145,768	143,978							
'12 WE	99,982	107,190	110,406	110,720	104,494							

Note: 'Weekday' defined as Monday-Friday, 'Weekend' defined as Saturday-Sunday

Weekday/Weekend Monthly Average Daily Traffic ('08-'12)



	May-08	May-09	May-10	May-11	May-12
Weekday	151,052	151,850	153,384	147,338	143,978
Weekend	112,500	119,016	126,018	112,630	104,494