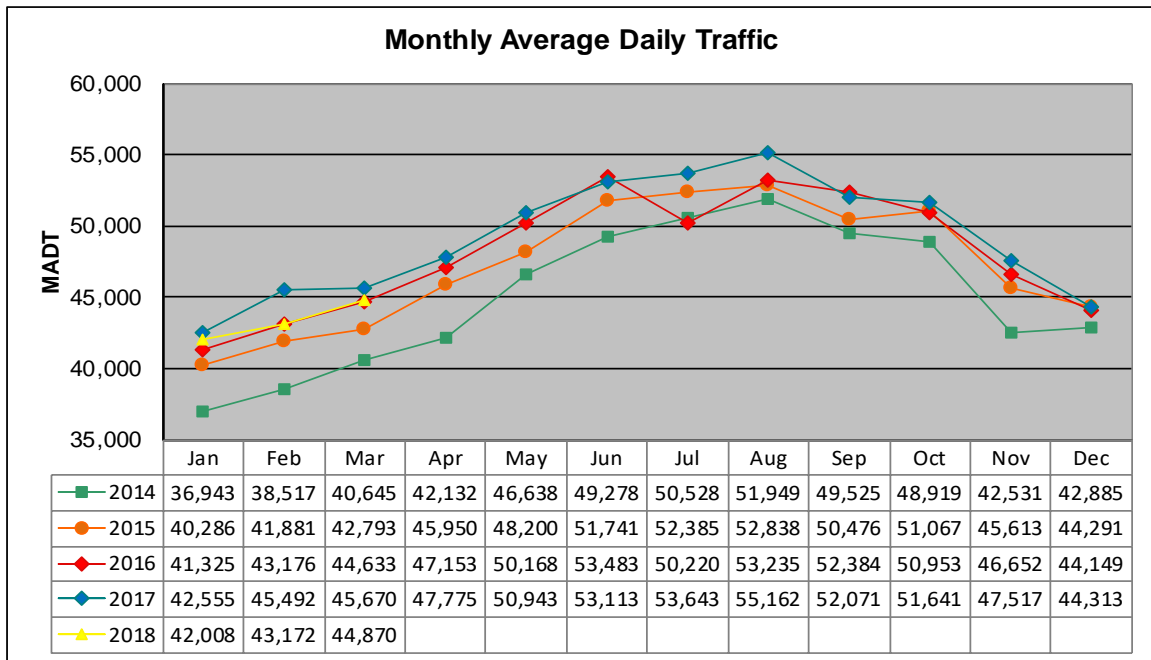


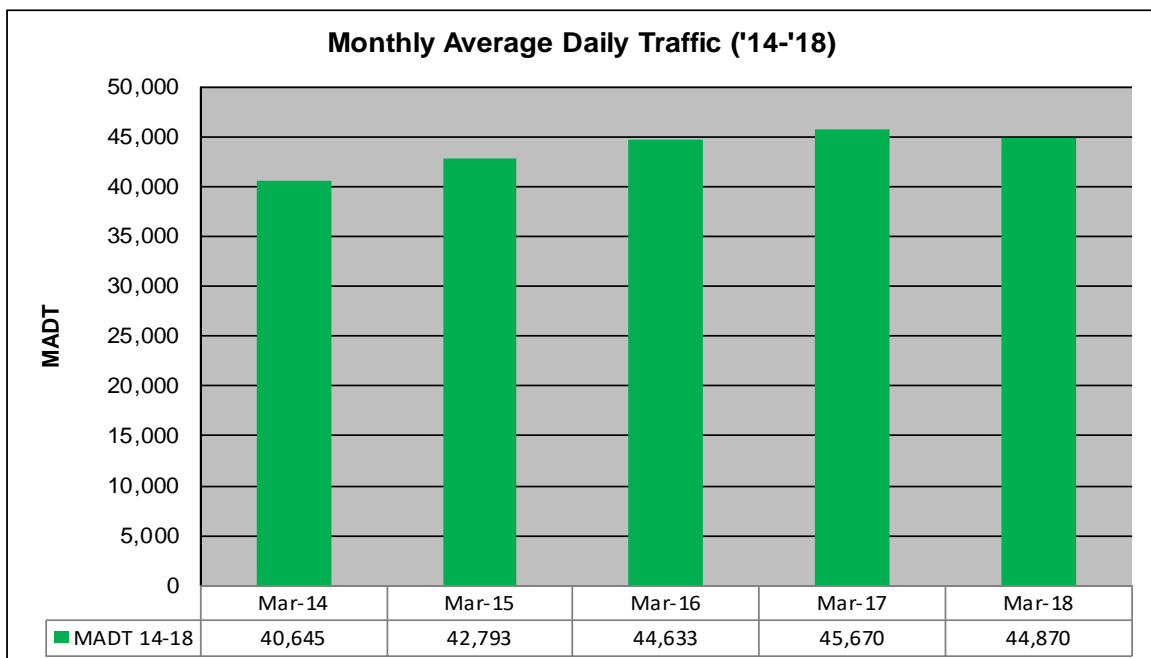
# MONTHLY REPORT, STATION NO. 335 (ATR)

## MARCH 2018

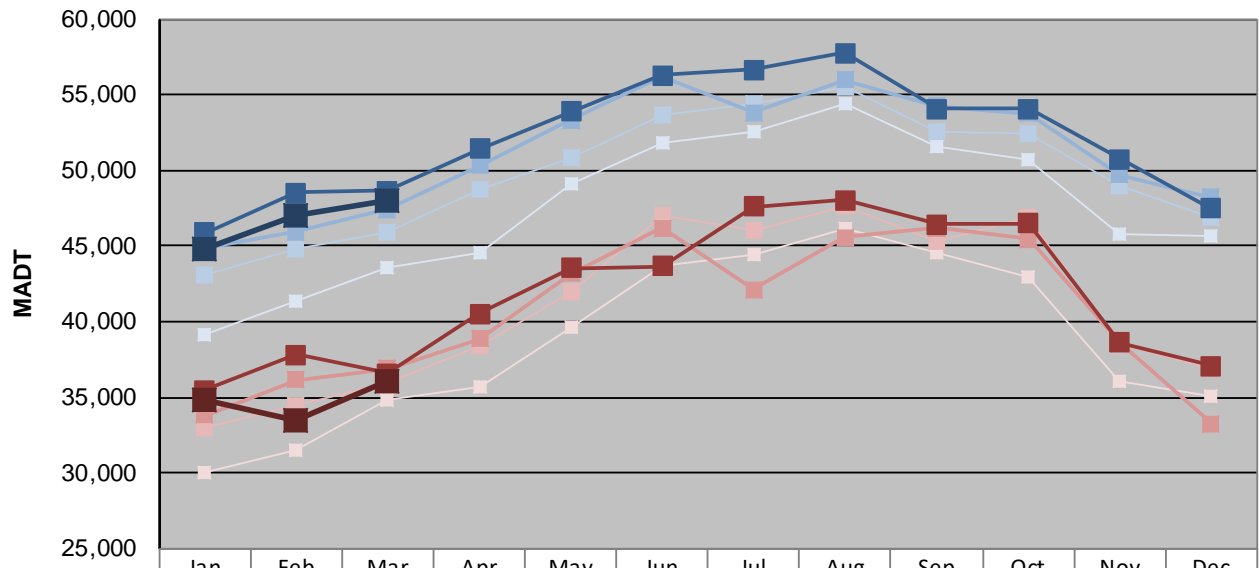
Station Measurement: VOLUME/SPEED/CLASS		
Route: I-35W	Route Direction: N/S	Lanes: 4
County: Anoka		Closest City: Blaine
Functional Class: Urban Principal Arterial - Interstate		
Location: W OF CR53 (SUNSET AVE NE) IN BLAINE		
Ref Post: 033+00.752	True Mile: 33.787	Sequence No. 9853
<b>Volume: 1,390,969</b>		<b>MADT: 44,870</b>
<b>Weekday (M-F) MADT: 48,042</b>		<b>Weekend (Sa-Su) MADT: 36,078</b>



Note: Decrease in traffic July 2016 due to construction on I-35W and TH 62



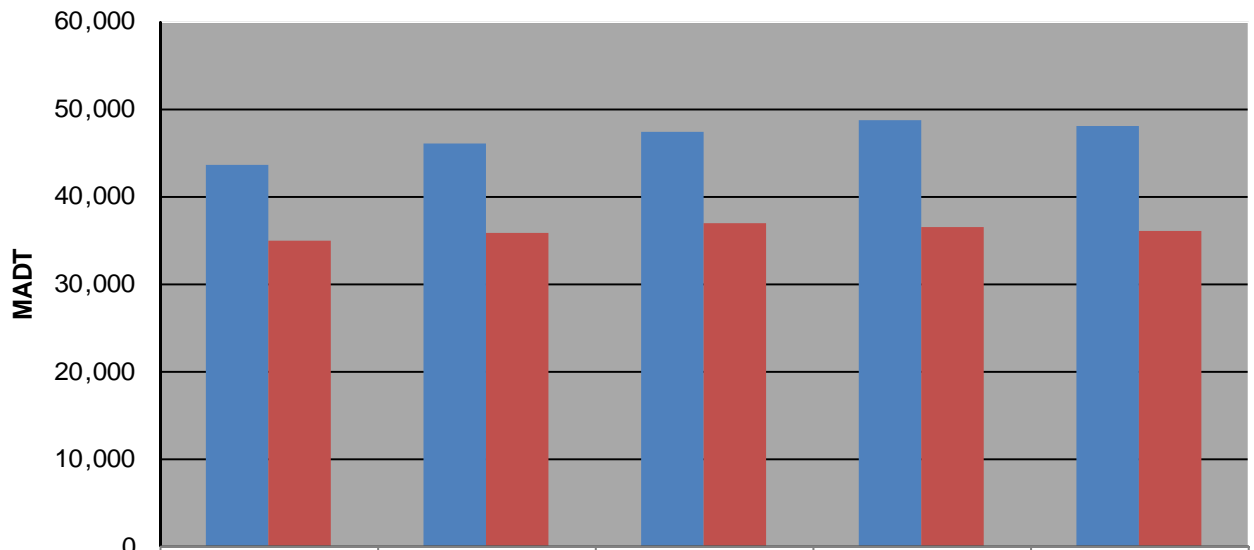
**Weekday (WD)/Weekend (WE) Monthly Average Daily Traffic**



	Jan	Feb	Mar	Apr	May	Jun	Jul	Aug	Sep	Oct	Nov	Dec
'14 WD	39,104	41,316	43,512	44,520	49,118	51,830	52,588	54,452	51,564	50,764	45,774	45,710
'14 WE	30,002	31,520	34,846	35,708	39,576	43,670	44,476	46,102	44,570	42,950	36,044	35,060
'15 WD	43,050	44,852	45,928	48,702	50,888	53,700	54,424	55,498	52,520	52,408	48,954	46,934
'15 WE	33,012	34,450	35,906	38,414	41,924	46,988	45,994	47,578	45,306	46,878	38,506	36,894
'16 WD	44,872	45,910	47,416	50,312	53,350	56,134	53,816	55,970	54,228	53,762	49,668	48,234
'16 WE	33,790	36,178	36,880	38,882	43,190	46,180	42,108	45,578	46,192	45,428	38,554	33,254
'17 WD	45,850	48,556	48,620	51,392	53,884	56,288	56,632	57,762	54,044	54,074	50,768	47,494
'17 WE	35,488	37,832	36,572	40,540	43,552	43,666	47,576	48,056	46,432	46,486	38,596	37,100
'18 WD	44,742	47,058	48,042									
'18 WE	34,850	33,458	36,078									

Note: 'Weekday' defined as Monday-Friday, 'Weekend' defined as Saturday-Sunday

**Weekday/Weekend Monthly Average Daily Traffic ('14-'18)**



	Mar-14	Mar-15	Mar-16	Mar-17	Mar-18
Weekday	43,512	45,928	47,416	48,620	48,042
Weekend	34,846	35,906	36,880	36,572	36,078