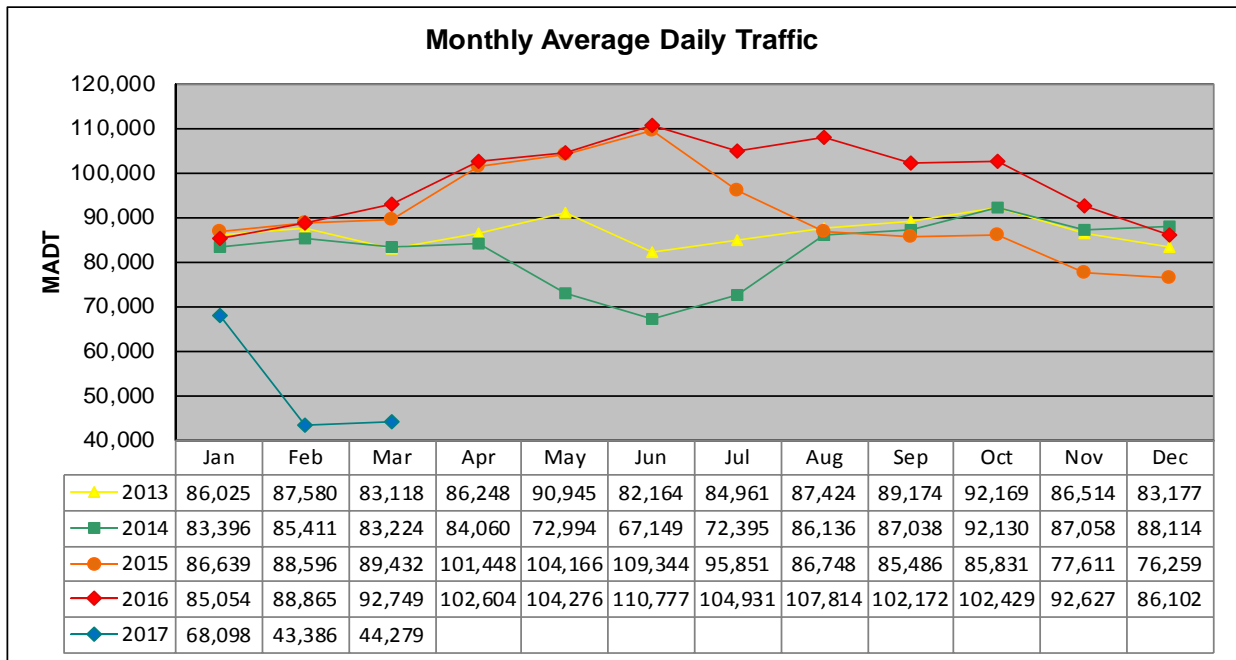


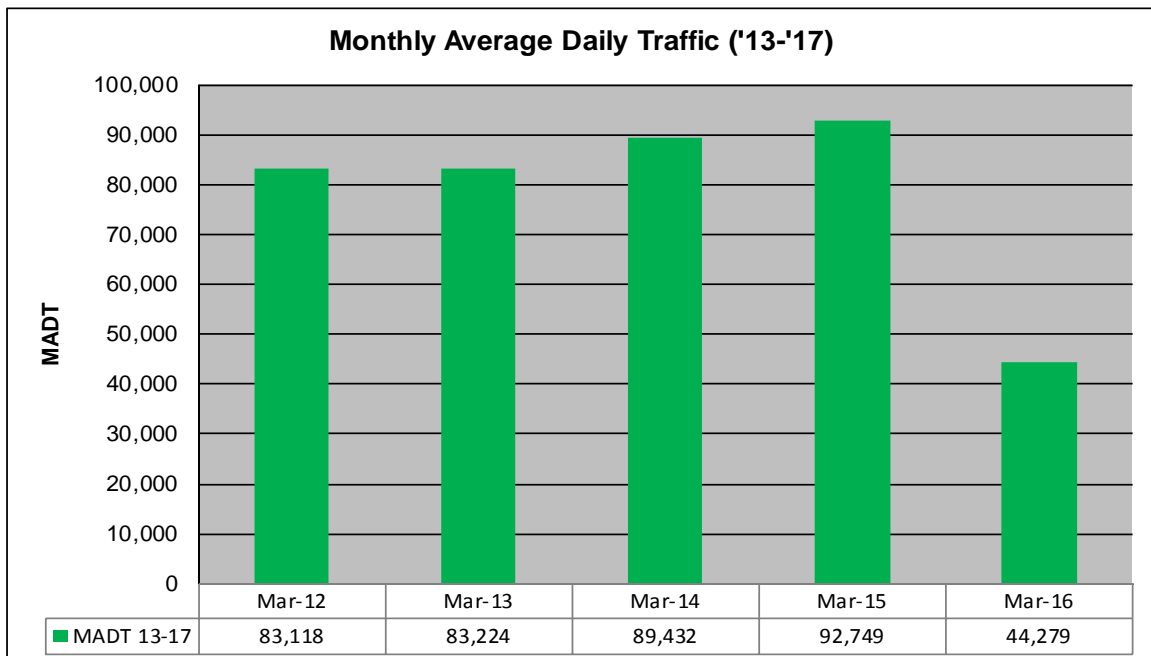
MONTHLY REPORT, STATION NO. 405 (ATR)

MARCH 2017

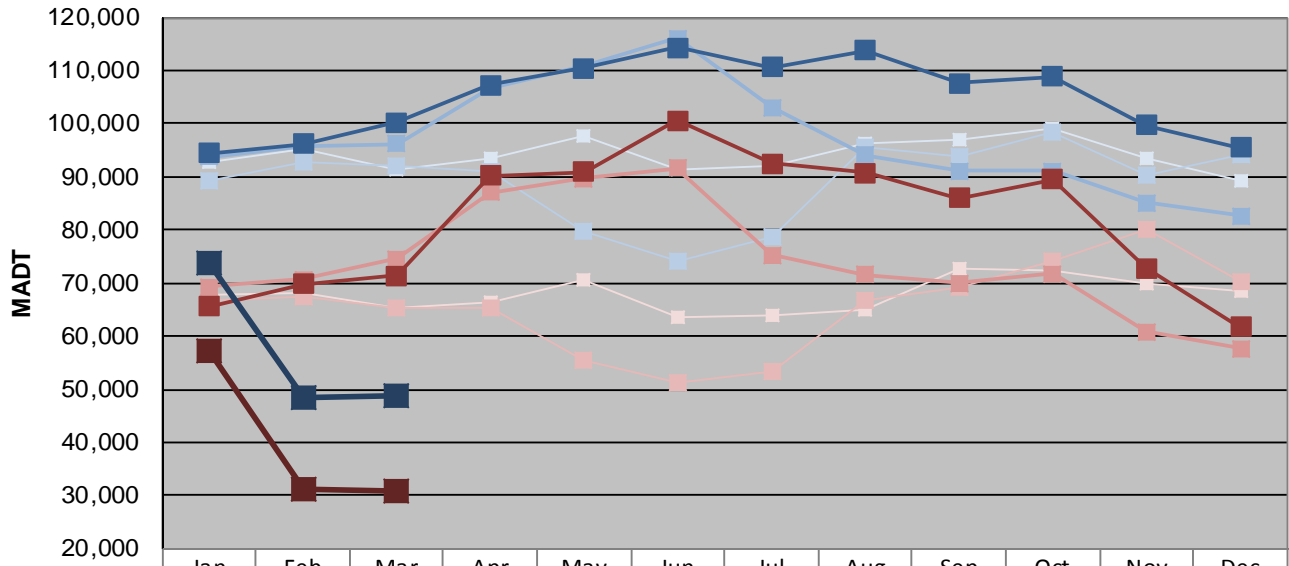
| | | |
|--|----------------------|-------------------------------------|
| Station Measurement: VOLUME | | |
| Route: TH 169 | Route Direction: N/S | Lanes: 4 |
| County: Hennepin | | Closest City: St Louis Park |
| Functional Class: Urban Principal Arterial - Other Freeways or Expressways | | |
| Location: N OF MSAS296 (CEDAR LAKE RD) IN ST LOUIS PARK | | |
| Ref Post: 128+00.870 | True Mile: 126.71 | Sequence No. 9883 |
| Volume: 1,372,638 | | MADT: 44,279 |
| Weekday (M-F) MADT: 48,850 | | Weekend (Sa-Su) MADT: 30,916 |



Note: Decrease in traffic June to August 2013, May to July 2014, December 2015, and January/February 2017 due to construction on TH 169... Increase in traffic April to July 2015 and June to October 2016 due to detour from TH 100



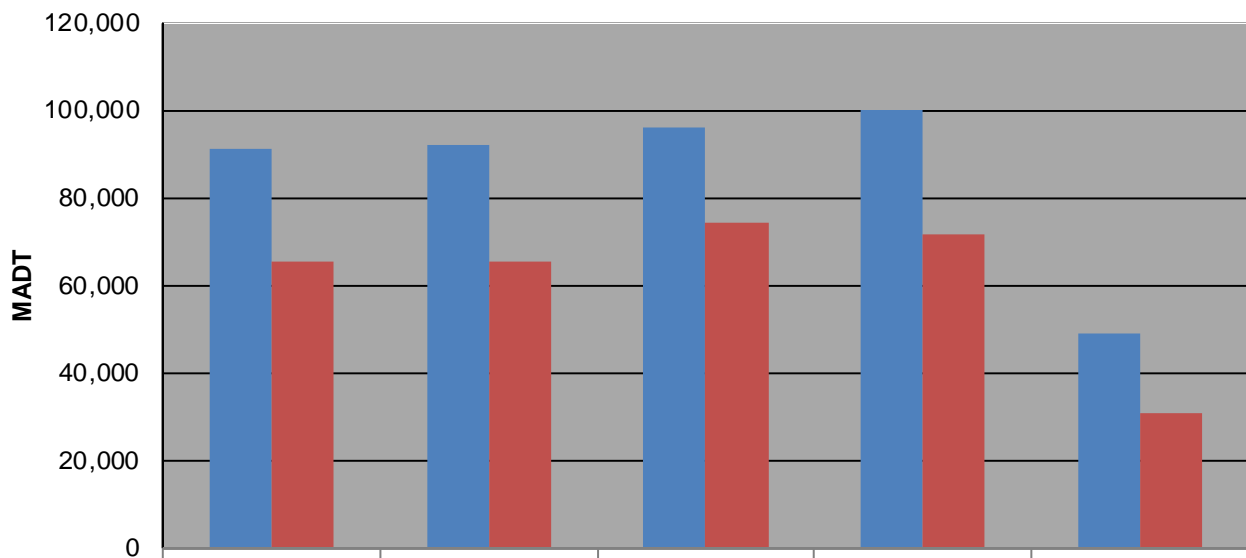
Weekday (WD)/Weekend (WE) Monthly Average Daily Traffic



| | Jan | Feb | Mar | Apr | May | Jun | Jul | Aug | Sep | Oct | Nov | Dec |
|--------|--------|--------|---------|---------|---------|---------|---------|---------|---------|---------|--------|--------|
| '13 WD | 92,596 | 95,332 | 91,314 | 93,474 | 97,552 | 91,436 | 91,964 | 96,318 | 97,086 | 99,082 | 93,484 | 89,416 |
| '13 WE | 67,682 | 68,204 | 65,260 | 66,224 | 70,580 | 63,622 | 63,984 | 65,062 | 72,598 | 72,330 | 69,892 | 68,544 |
| '14 WD | 89,146 | 92,618 | 92,010 | 90,872 | 79,712 | 74,122 | 78,754 | 95,444 | 93,860 | 98,234 | 90,472 | 94,126 |
| '14 WE | 66,634 | 67,396 | 65,258 | 65,418 | 55,340 | 51,354 | 53,202 | 66,702 | 69,192 | 74,266 | 80,232 | 70,394 |
| '15 WD | 93,690 | 95,796 | 96,240 | 106,676 | 110,710 | 115,996 | 102,972 | 94,048 | 91,062 | 91,164 | 85,098 | 82,608 |
| '15 WE | 69,256 | 70,598 | 74,480 | 87,124 | 89,608 | 91,604 | 75,216 | 71,574 | 69,916 | 71,792 | 60,778 | 57,710 |
| '16 WD | 94,498 | 96,204 | 100,150 | 107,248 | 110,370 | 114,386 | 110,626 | 113,858 | 107,692 | 108,798 | 99,636 | 95,448 |
| '16 WE | 65,538 | 69,816 | 71,462 | 90,258 | 90,998 | 100,518 | 92,494 | 90,690 | 86,018 | 89,518 | 72,858 | 61,730 |
| '17 WD | 73,794 | 48,290 | 48,850 | | | | | | | | | |
| '17 WE | 57,142 | 31,128 | 30,916 | | | | | | | | | |

Note: 'Weekday' defined as Monday-Friday, 'Weekend' defined as Saturday-Sunday

Weekday/Weekend Monthly Average Daily Traffic ('13-'17)



| | Mar-12 | Mar-13 | Mar-14 | Mar-15 | Mar-16 |
|---------|--------|--------|--------|---------|--------|
| Weekday | 91,314 | 92,010 | 96,240 | 100,150 | 48,850 |
| Weekend | 65,260 | 65,258 | 74,480 | 71,462 | 30,916 |