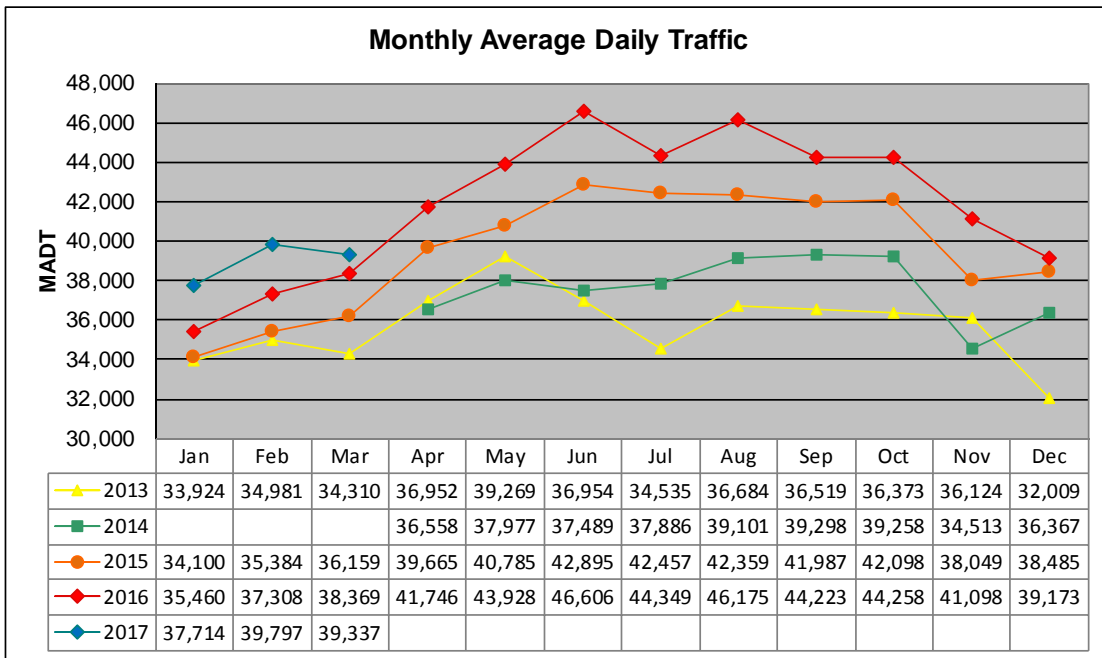


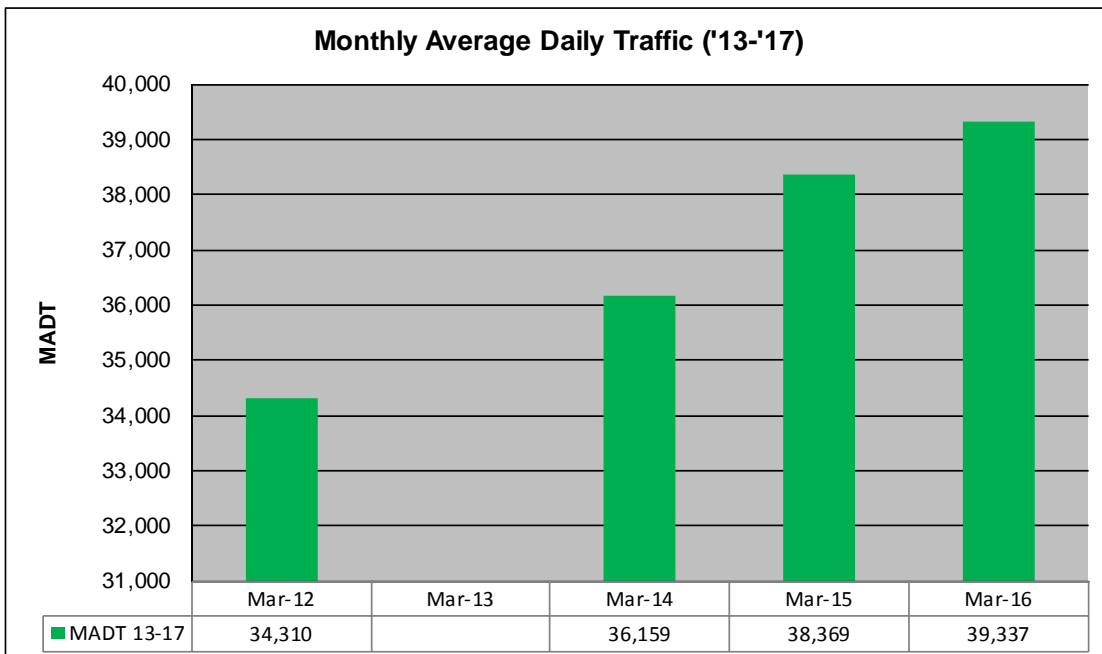
MONTHLY REPORT, STATION NO. 36 (WIM)

MARCH 2017

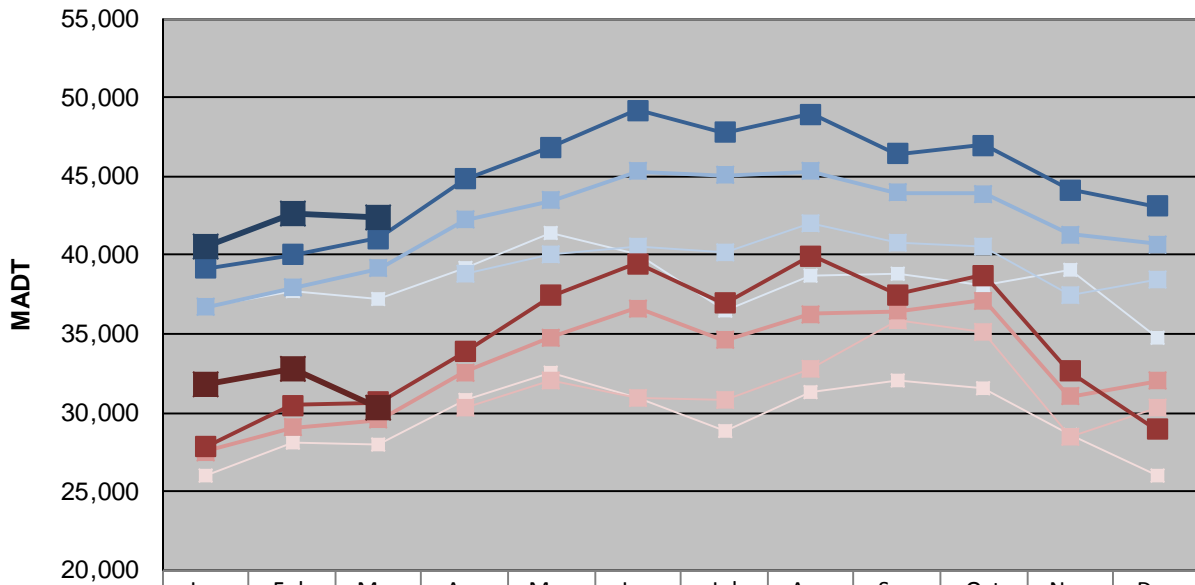
| | | |
|--|----------------------|-------------------------------------|
| Station Measurement: VOLUME/SPEED/CLASS/WEIGHT | | |
| Route: TH 36 | Route Direction: E/W | Lanes: 4 |
| County: Washington | | Closest City: Lake Elmo |
| Functional Class: Urban Other Principal Arterial | | |
| Location: .7 MI W OF CSAH17 (LAKE ELMO AVE N) IN LAKE ELMO | | |
| Ref Post: 014+00.983 | True Mile: 15.022 | Sequence No. 10237 |
| Volume: 1,219,440 | | MADT: 39,337 |
| Weekday (M-F) MADT: 42,340 | | Weekend (Sa-Su) MADT: 30,370 |



Note: Decrease in traffic June to October 2013 due to construction on TH 36... Increase in traffic June/July 2015 due to detours... No data January to March 2014 due to site communication issues



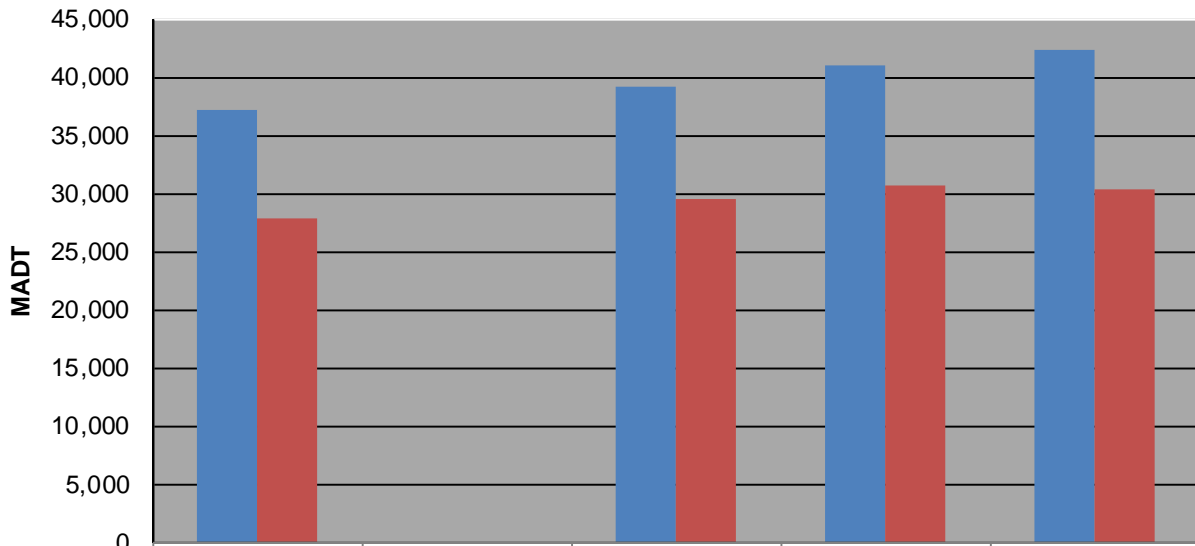
Weekday (WD)/Weekend (WE) Monthly Average Daily Traffic



| | Jan | Feb | Mar | Apr | May | Jun | Jul | Aug | Sep | Oct | Nov | Dec |
|--------|--------|--------|--------|--------|--------|--------|--------|--------|--------|--------|--------|--------|
| '13 WD | 36,708 | 37,754 | 37,242 | 39,212 | 41,436 | 39,990 | 36,500 | 38,638 | 38,780 | 38,044 | 39,094 | 34,722 |
| '13 WE | 25,992 | 28,050 | 27,924 | 30,754 | 32,510 | 30,882 | 28,790 | 31,332 | 32,020 | 31,522 | 28,646 | 26,068 |
| '14 WD | | | | 38,810 | 40,104 | 40,524 | 40,210 | 42,016 | 40,748 | 40,584 | 37,514 | 38,488 |
| '14 WE | | | | 30,304 | 32,034 | 30,912 | 30,830 | 32,790 | 35,832 | 35,116 | 28,512 | 30,264 |
| '15 WD | 36,672 | 37,914 | 39,140 | 42,232 | 43,490 | 45,292 | 45,064 | 45,336 | 43,966 | 43,926 | 41,320 | 40,712 |
| '15 WE | 27,510 | 29,060 | 29,552 | 32,540 | 34,790 | 36,610 | 34,628 | 36,274 | 36,420 | 37,098 | 31,028 | 32,026 |
| '16 WD | 39,138 | 39,988 | 41,042 | 44,844 | 46,878 | 49,160 | 47,784 | 48,922 | 46,444 | 47,002 | 44,112 | 43,082 |
| '16 WE | 27,818 | 30,486 | 30,652 | 33,854 | 37,432 | 39,452 | 36,914 | 39,962 | 37,492 | 38,736 | 32,624 | 28,906 |
| '17 WD | 40,546 | 42,578 | 42,340 | | | | | | | | | |
| '17 WE | 31,842 | 32,842 | 30,370 | | | | | | | | | |

Note: 'Weekday' defined as Monday-Friday, 'Weekend' defined as Saturday-Sunday

Weekday/Weekend Monthly Average Daily Traffic ('13-'17)



| | Mar-12 | Mar-13 | Mar-14 | Mar-15 | Mar-16 |
|---------|--------|--------|--------|--------|--------|
| Weekday | 37,242 | | 39,140 | 41,042 | 42,340 |
| Weekend | 27,924 | | 29,552 | 30,652 | 30,370 |