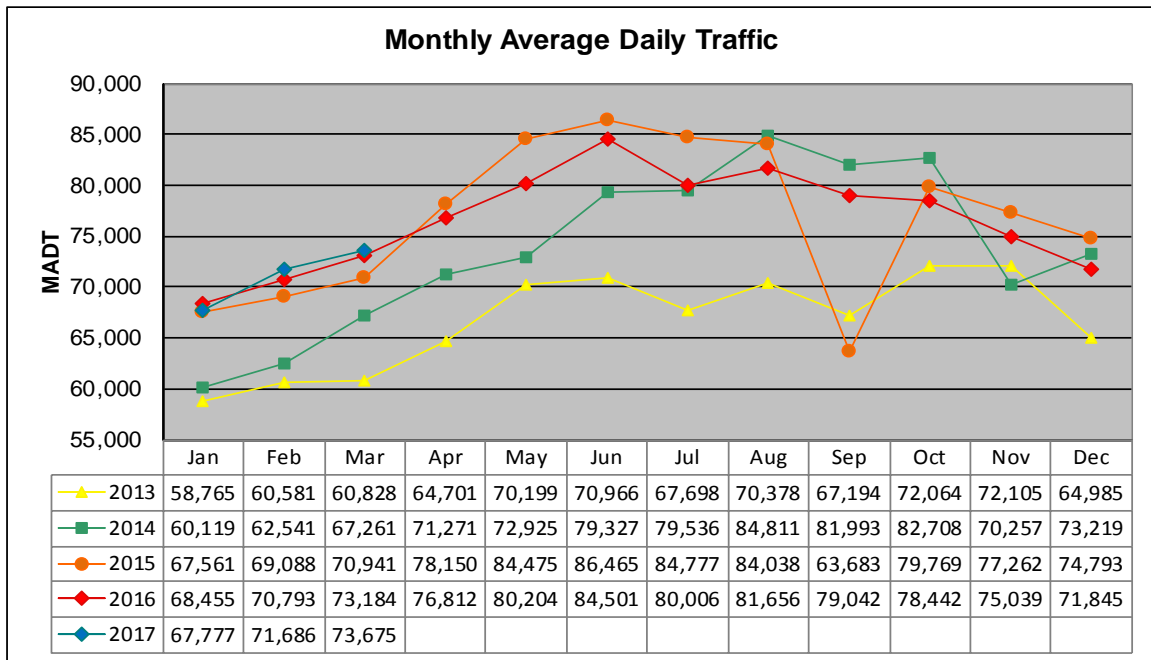


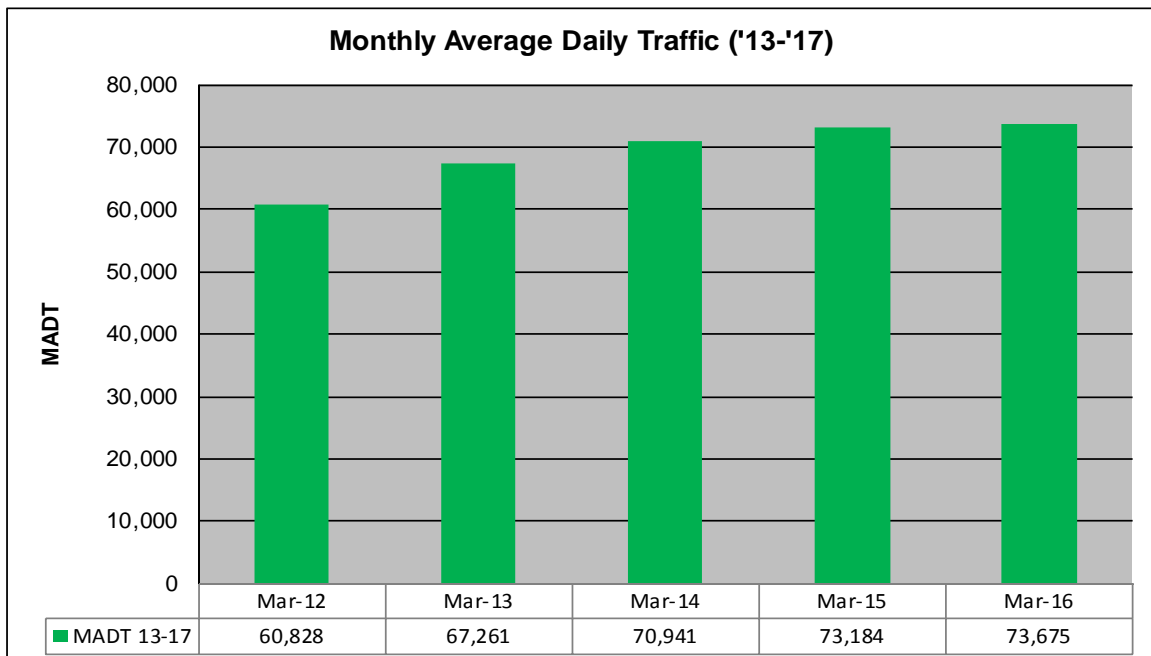
MONTHLY REPORT, STATION NO. 341 (ATR)

MARCH 2017

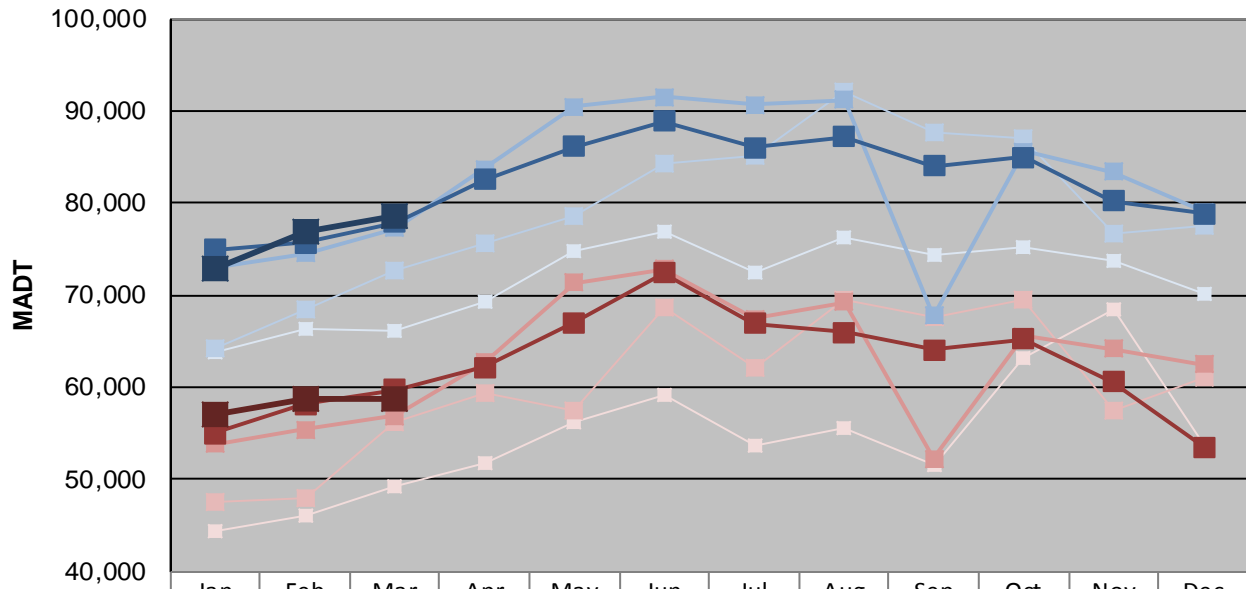
Station Measurement: VOLUME/SPEED/CLASS		
Route: I-694	Route Direction: N/S	Lanes: 4
County: Washington		Closest City: Oakdale
Functional Class: Urban Principal Arterial - Interstate		
Location: S OF CSAH35 (50TH ST N) IN OAKDALE		
Ref Post: 053+00.290	True Mile: 53.237	Sequence No. 9858
Volume: 2,283,924		MADT: 73,675
Weekday (M-F) MADT: 78,620		Weekend (Sa-Su) MADT: 58,786



Note: Increase in traffic November 2013, June to October 2014, and May/July/August/October 2015 due to detour from TH 36

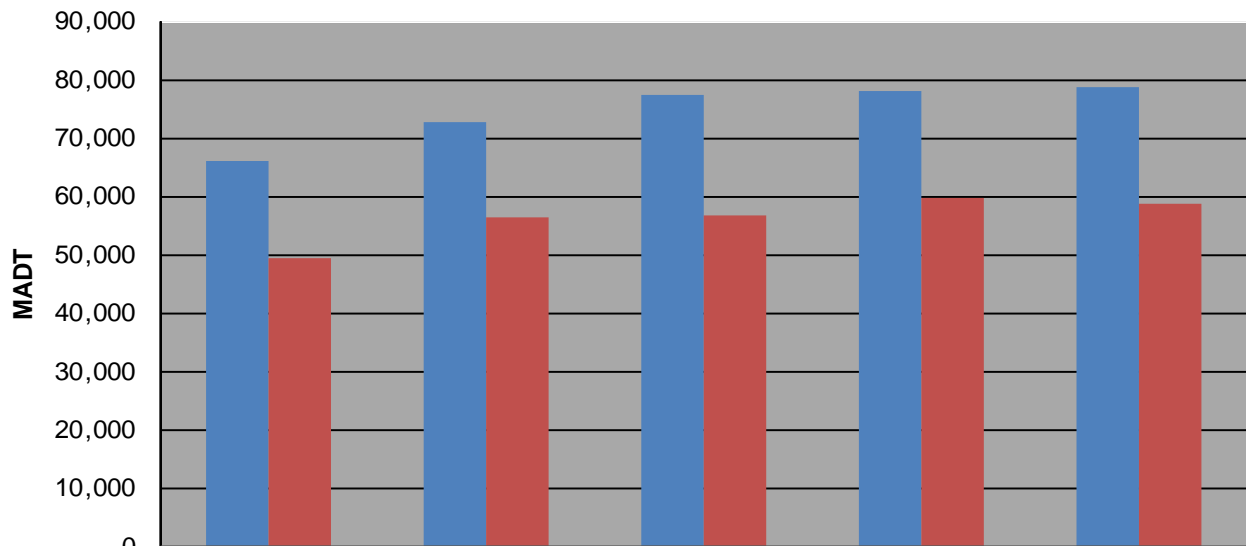


Weekday (WD)/Weekend (WE) Monthly Average Daily Traffic



Note: 'Weekday' defined as Monday-Friday, 'Weekend' defined as Saturday-Sunday

Weekday/Weekend Monthly Average Daily Traffic ('13-'17)



Weekday	66,070	72,636	77,256	77,918	78,620
Weekend	49,352	56,300	56,890	59,722	58,786