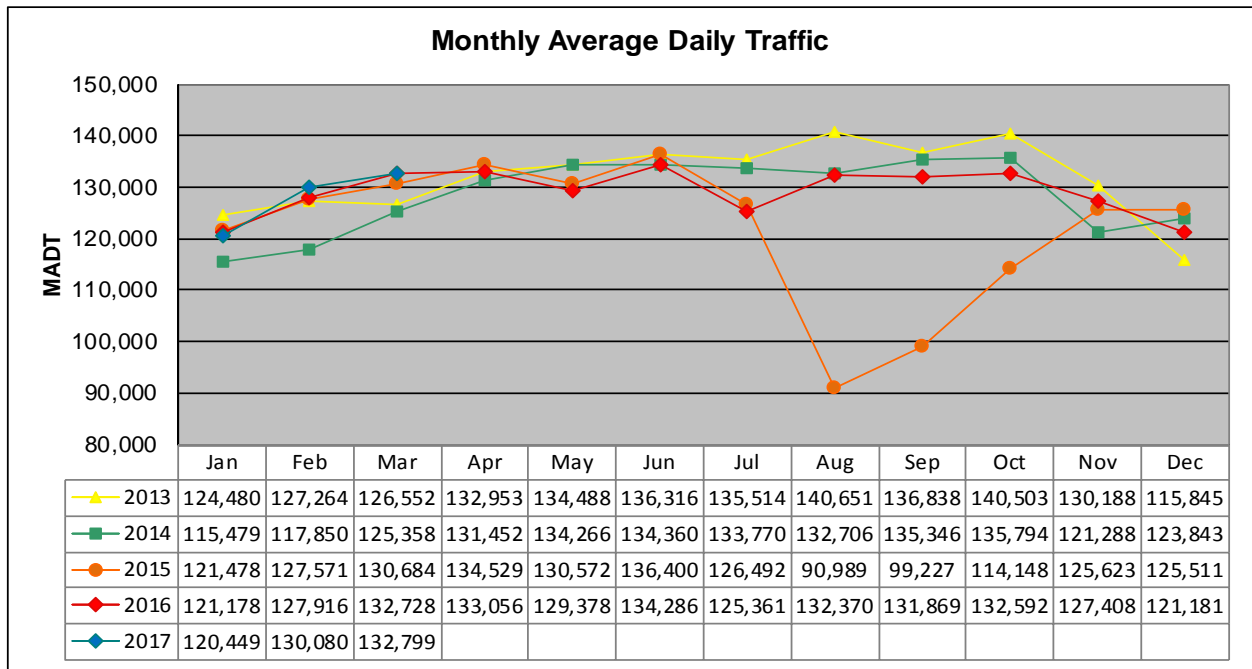


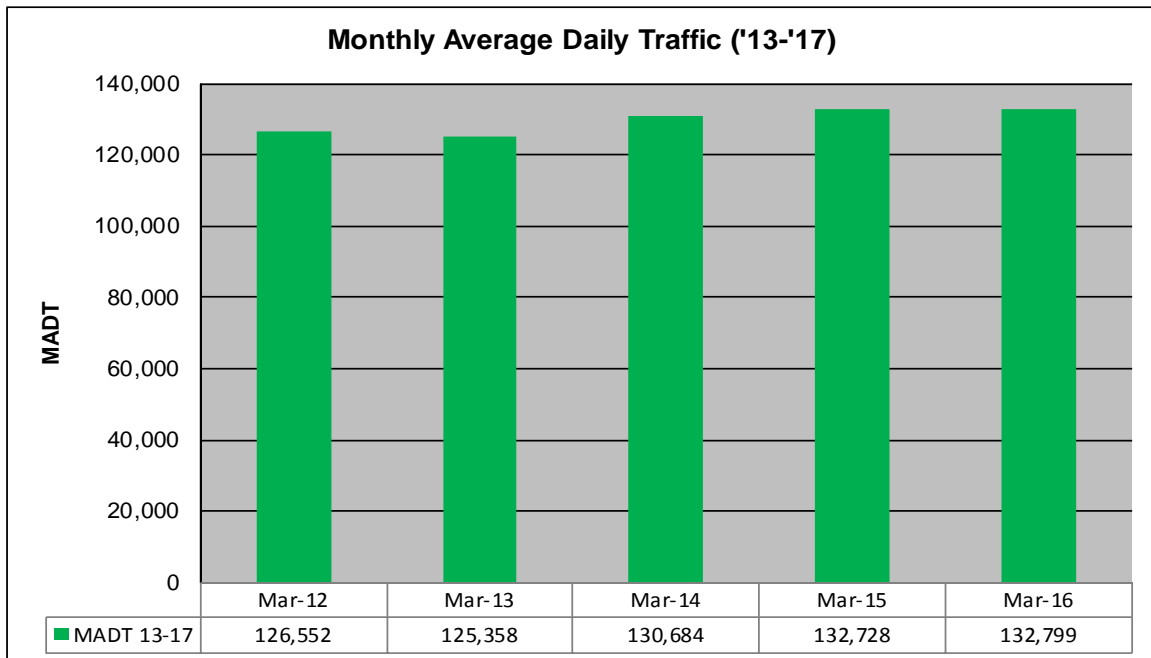
# MONTHLY REPORT, STATION NO. 326 (ATR)

## MARCH 2017

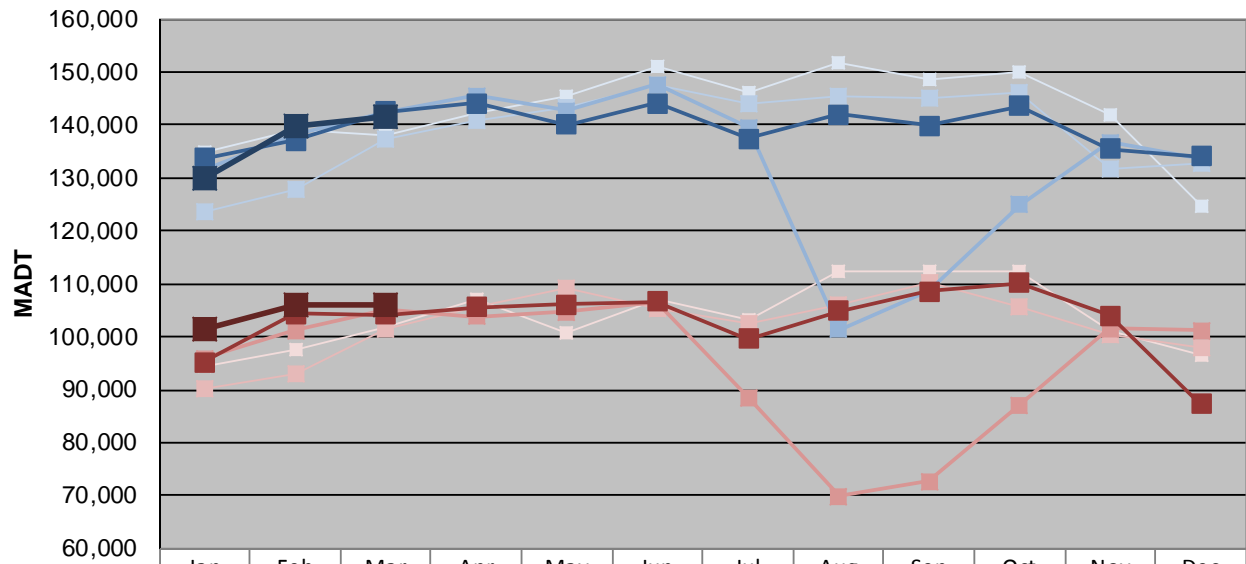
|   |                      |                                      |
|---|----------------------|--------------------------------------|
| Station Measurement: VOLUME                             |                      |                                      |
| Route: I-394  | Route Direction: E/W | Lanes: 6                             |
| County: Hennepin  |                      | Closest City: Minneapolis            |
| Functional Class: Urban Principal Arterial - Interstate |                      |                                      |
| Location: E OF TH100 IN MINNEAPOLIS                     |                      |                                      |
| Ref Post: 007+00.250                                    | True Mile: 7.25      | Sequence No. 9850                    |
| <b>Volume: 4,116,764</b>                                |                      | <b>MADT: 132,799</b>                 |
| <b>Weekday (M-F) MADT: 141,664</b>                      |                      | <b>Weekend (Sa-Su) MADT: 106,132</b> |



Note: Decrease in traffic July to October 2015 due to construction on I-394



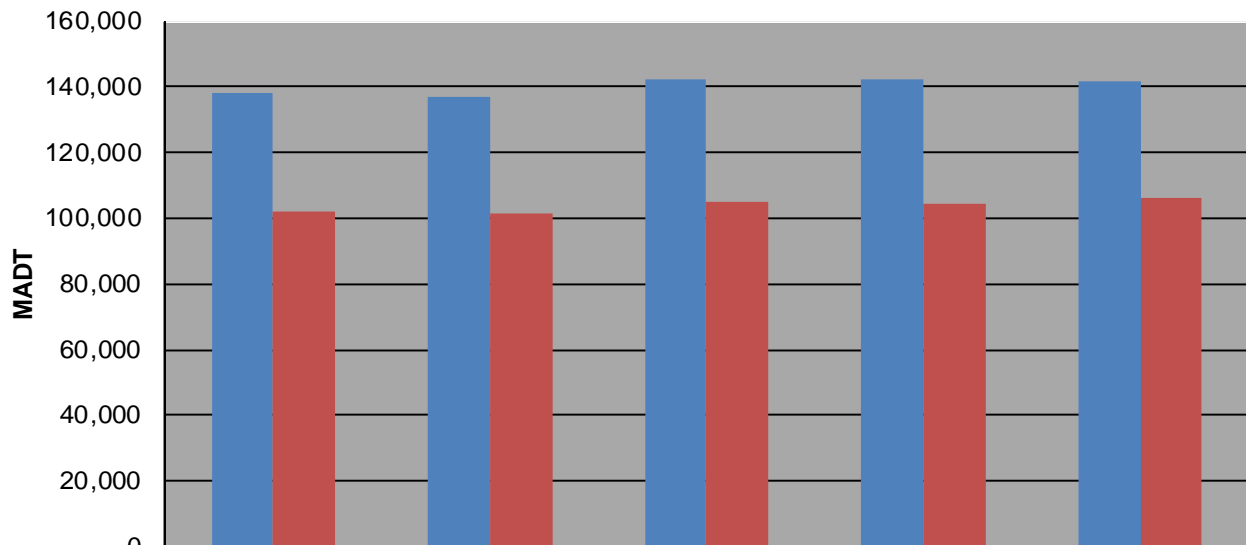
**Weekday (WD)/Weekend (WE) Monthly Average Daily Traffic**



|        | Jan     | Feb     | Mar     | Apr     | May     | Jun     | Jul     | Aug     | Sep     | Oct     | Nov     | Dec     |
|--------|---------|---------|---------|---------|---------|---------|---------|---------|---------|---------|---------|---------|
| '13 WD | 134,976 | 139,158 | 137,954 | 142,296 | 145,442 | 150,984 | 146,278 | 151,644 | 148,730 | 150,116 | 141,942 | 124,616 |
| '13 WE | 94,342  | 97,532  | 101,784 | 107,138 | 100,908 | 106,980 | 103,032 | 112,510 | 112,348 | 112,480 | 101,206 | 96,348  |
| '14 WD | 123,722 | 127,822 | 137,244 | 140,684 | 143,392 | 147,456 | 143,966 | 145,546 | 145,064 | 146,016 | 131,682 | 132,652 |
| '14 WE | 90,302  | 92,922  | 101,338 | 105,692 | 109,168 | 105,392 | 102,412 | 106,158 | 110,372 | 105,688 | 100,502 | 98,046  |
| '15 WD | 131,562 | 138,130 | 142,330 | 145,488 | 142,650 | 147,580 | 139,514 | 101,276 | 108,568 | 124,858 | 136,732 | 133,684 |
| '15 WE | 95,840  | 101,174 | 105,220 | 103,872 | 104,634 | 106,674 | 88,554  | 69,904  | 72,690  | 87,142  | 101,610 | 101,238 |
| '16 WD | 133,748 | 137,102 | 142,512 | 144,022 | 140,022 | 144,060 | 137,350 | 142,004 | 139,832 | 143,610 | 135,492 | 134,028 |
| '16 WE | 95,198  | 104,364 | 104,246 | 105,662 | 106,034 | 106,692 | 99,612  | 104,888 | 108,636 | 110,152 | 103,982 | 87,222  |
| '17 WD | 129,784 | 139,730 | 141,664 |         |         |         |         |         |         |         |         |         |
| '17 WE | 101,340 | 105,952 | 106,132 |         |         |         |         |         |         |         |         |         |

Note: 'Weekday' defined as Monday-Friday, 'Weekend' defined as Saturday-Sunday

**Weekday/Weekend Monthly Average Daily Traffic ('13-'17)**



|         | Mar-12  | Mar-13  | Mar-14  | Mar-15  | Mar-16  |
|---------|---------|---------|---------|---------|---------|
| Weekday | 137,954 | 137,244 | 142,330 | 142,512 | 141,664 |
| Weekend | 101,784 | 101,338 | 105,220 | 104,246 | 106,132 |