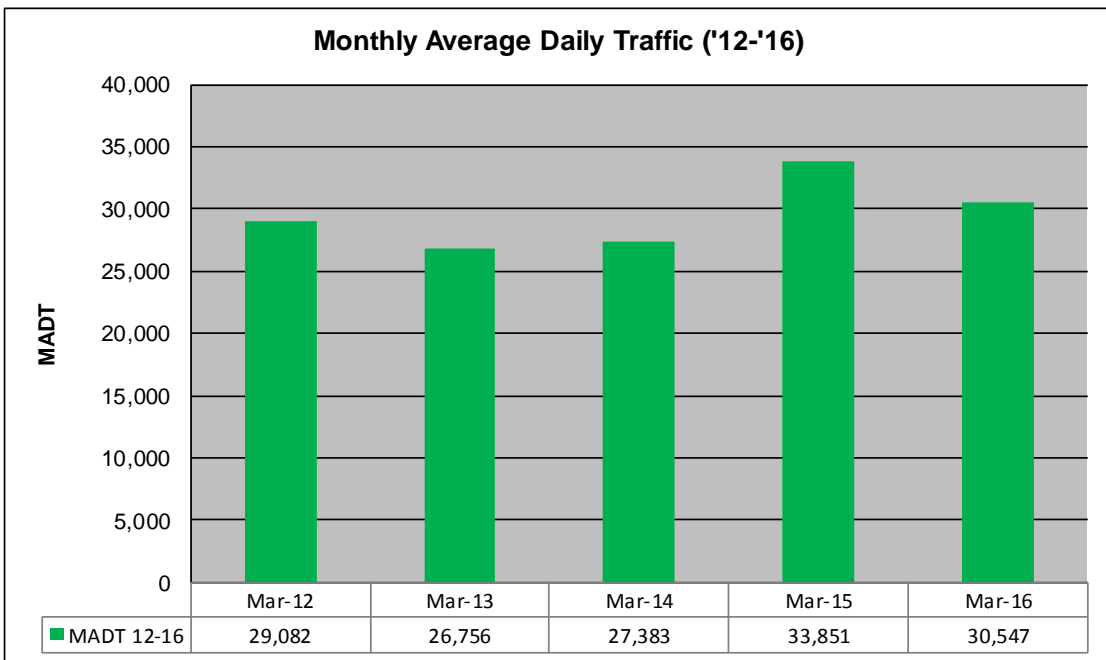
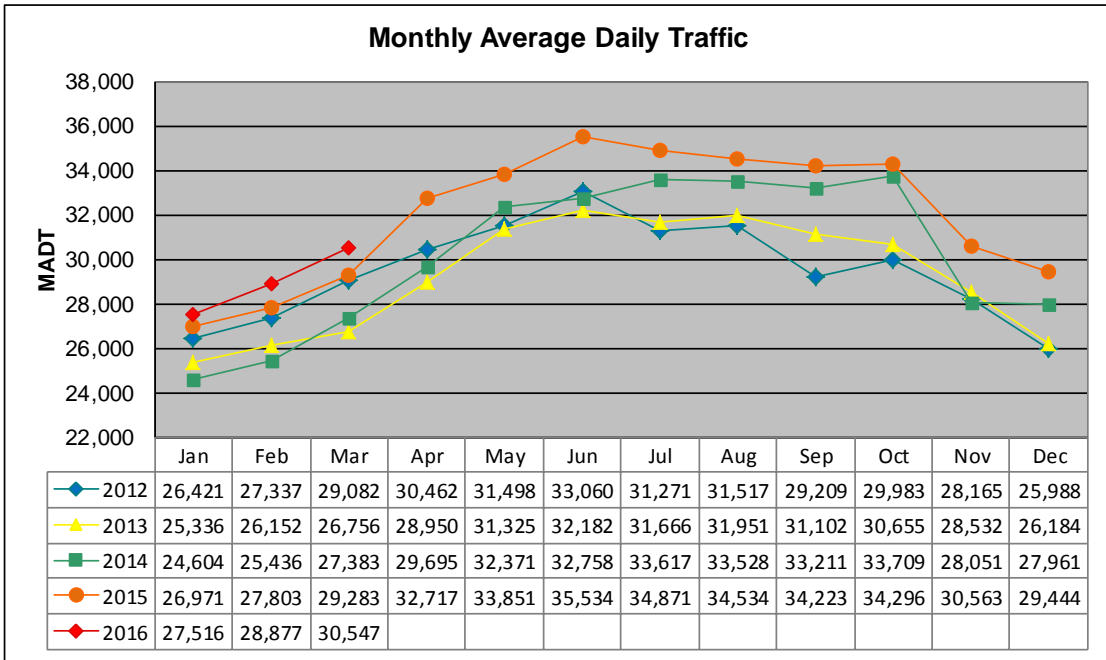


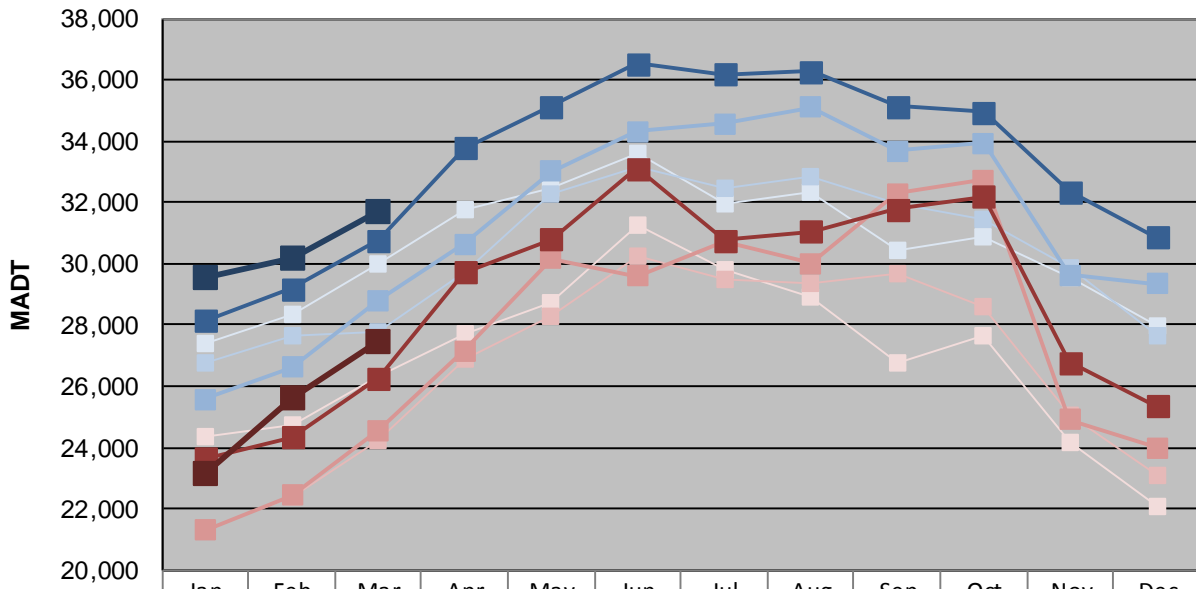
MONTHLY REPORT, STATION NO. 42 (WIM)

MARCH 2016

Station Measurement: VOLUME/SPEED/CLASS/WEIGHT		
Route: TH 61	Route Direction: N/S	Lanes: 4
County: Washington		Closest City: Cottage Grove
Functional Class: Rural Principal Arterial - Other		
Location: 0.4 MI S OF TH95 (MANNING AVE S), S OF COTTAGE GROVE		
Ref Post: 119+00.644	True Mile: 119.337	Sequence No. 11128
Volume: 946,943		MADT: 30,547
Weekday (M-F) MADT: 31,686		Weekend (Sa-Su) MADT: 27,472



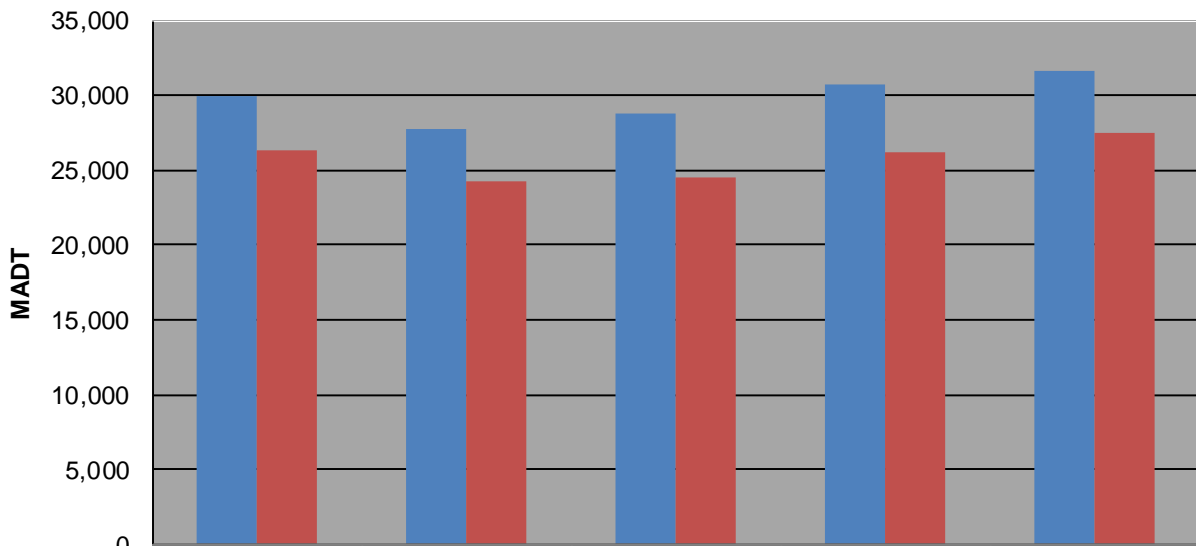
Weekday (WD)/Weekend (WE) Monthly Average Daily Traffic



	Jan	Feb	Mar	Apr	May	Jun	Jul	Aug	Sep	Oct	Nov	Dec
'12 WD	27,394	28,376	29,968	31,786	32,470	33,620	31,988	32,322	30,422	30,890	29,550	27,954
'12 WE	24,370	24,760	26,344	27,718	28,752	31,246	29,822	28,938	26,784	27,678	24,182	22,094
'13 WD	26,782	27,656	27,798	29,724	32,268	33,146	32,438	32,816	31,954	31,450	29,850	27,648
'13 WE	21,328	22,392	24,252	26,900	28,270	30,254	29,500	29,368	29,684	28,576	25,076	23,116
'14 WD	25,582	26,636	28,816	30,648	33,028	34,312	34,554	35,102	33,682	33,924	29,622	29,342
'14 WE	21,302	22,436	24,556	27,152	30,180	29,582	30,698	30,004	32,300	32,724	24,908	23,978
'15 WD	28,138	29,190	30,766	33,784	35,150	36,520	36,184	36,266	35,152	34,950	32,342	30,880
'15 WE	23,658	24,338	26,258	29,732	30,800	33,102	30,770	31,058	31,798	32,196	26,794	25,342
'16 WD	29,558	30,162	31,686									
'16 WE	23,182	25,602	27,472									

Note: 'Weekday' defined as Monday-Friday, 'Weekend' defined as Saturday-Sunday

Weekday/Weekend Monthly Average Daily Traffic ('12-'16)



	Mar-12	Mar-13	Mar-14	Mar-15	Mar-16
Weekday	29,968	27,798	28,816	30,766	31,686
Weekend	26,344	24,252	24,556	26,258	27,472