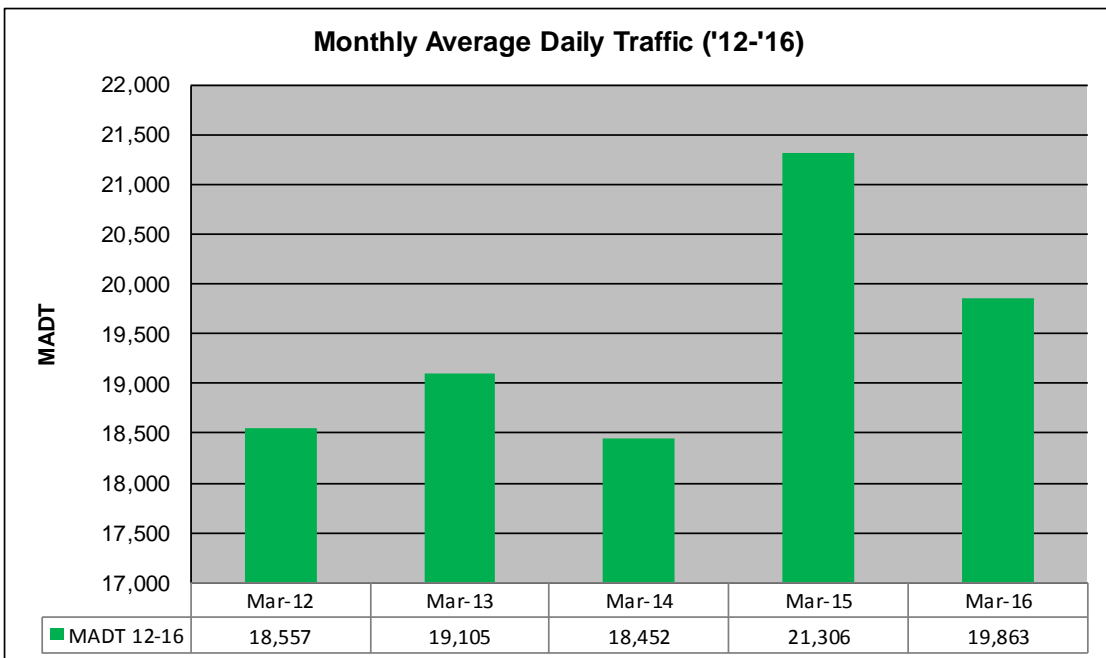
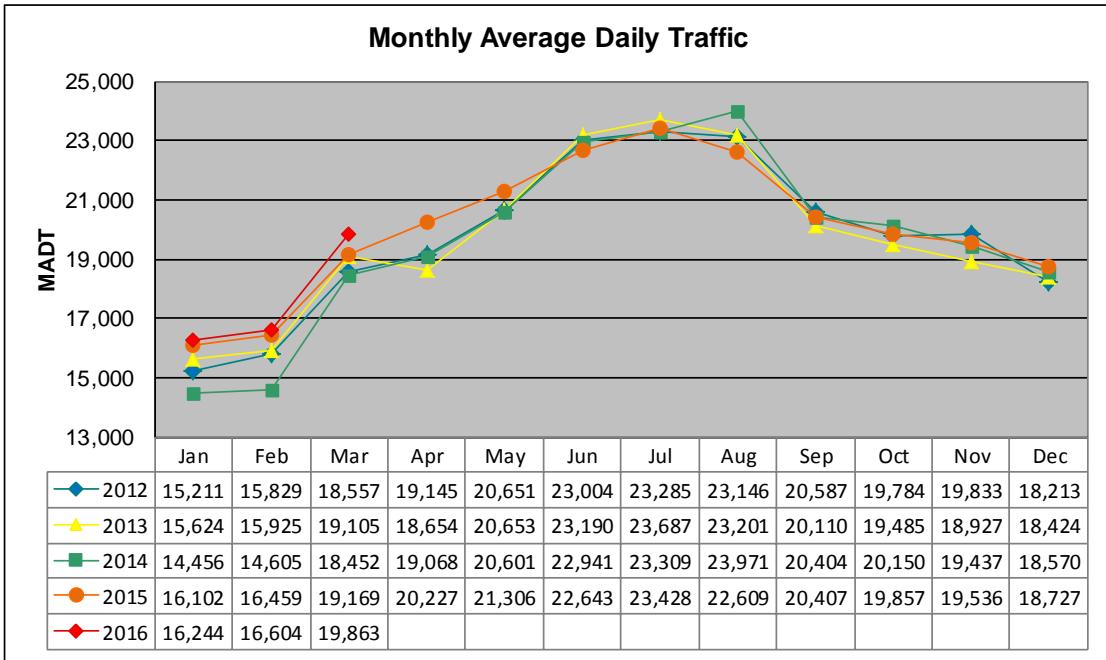


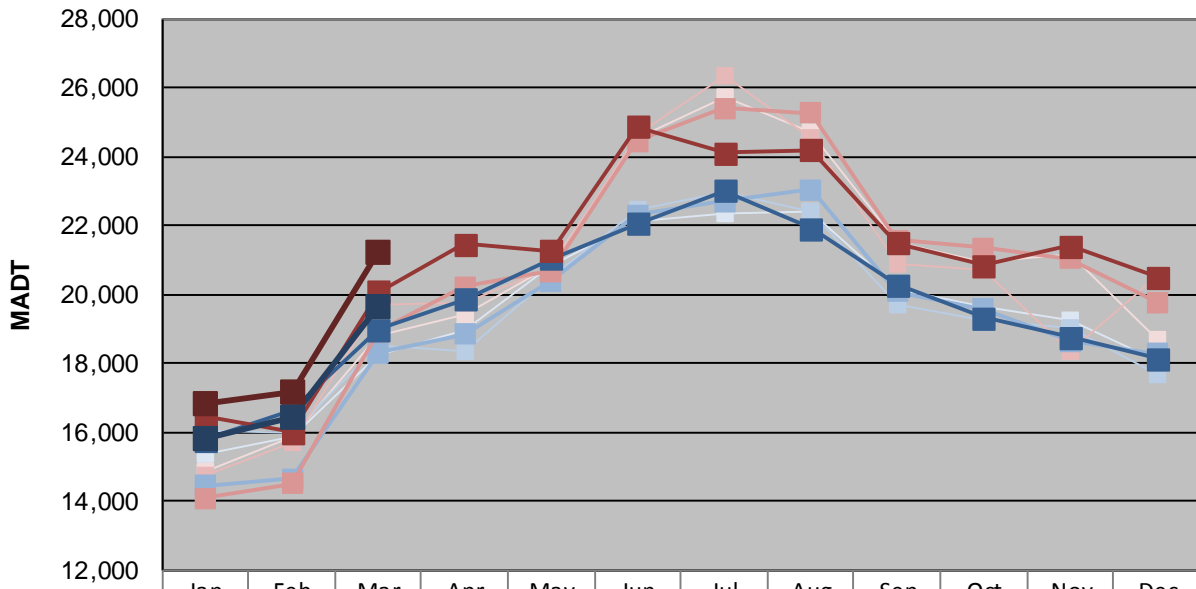
# MONTHLY REPORT, STATION NO. 26 (WIM)

## MARCH 2016

|   |                         |                                     |
|---|-------------------------|-------------------------------------|
| Station Measurement: VOLUME/SPEED/CLASS/WEIGHT          |                         |                                     |
| Route: I-35   | Route Direction: N/S    | Lanes: 4                            |
| County: Steele  | Closest City: Ellendale |                                     |
| Functional Class: Rural Principal Arterial - Interstate |                         |                                     |
| Location: 3.5 MI N OF TH30, N OF ELLENDALE              |                         |                                     |
| Ref Post: 030+00.100                                    | True Mile: 30.103       | Sequence No. 5707                   |
| <b>Volume: 615,738</b>                                  |                         | <b>MADT: 19,863</b>                 |
| <b>Weekday (M-F) MADT: 19,650</b>                       |                         | <b>Weekend (Sa-Su) MADT: 21,194</b> |



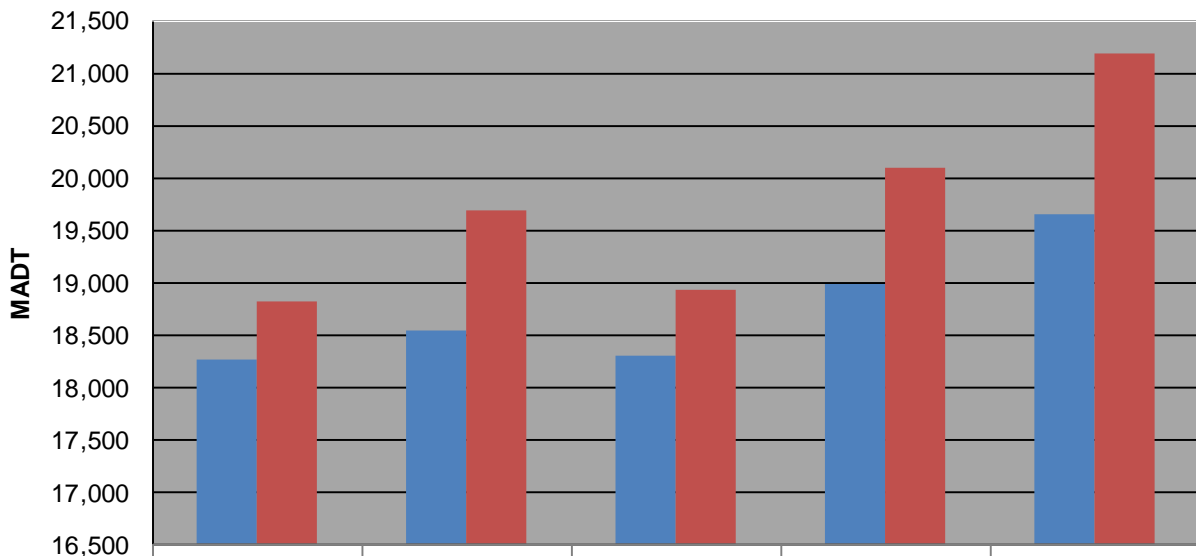
### Weekday (WD)/Weekend (WE) Monthly Average Daily Traffic



|        | Jan    | Feb    | Mar    | Apr    | May    | Jun    | Jul    | Aug    | Sep    | Oct    | Nov    | Dec    |
|--------|--------|--------|--------|--------|--------|--------|--------|--------|--------|--------|--------|--------|
| '12 WD | 15,374 | 15,880 | 18,258 | 18,960 | 20,840 | 22,122 | 22,366 | 22,386 | 20,138 | 19,666 | 19,232 | 18,090 |
| '12 WE | 14,854 | 15,898 | 18,820 | 19,430 | 20,836 | 24,530 | 25,698 | 24,716 | 21,486 | 20,934 | 21,164 | 18,670 |
| '13 WD | 16,032 | 16,006 | 18,544 | 18,352 | 20,506 | 22,456 | 22,958 | 22,426 | 19,714 | 19,238 | 19,038 | 17,658 |
| '13 WE | 14,772 | 15,724 | 19,688 | 19,776 | 20,766 | 24,662 | 26,332 | 24,532 | 20,866 | 20,728 | 18,334 | 20,560 |
| '14 WD | 14,448 | 14,648 | 18,298 | 18,856 | 20,390 | 22,296 | 22,692 | 23,042 | 20,094 | 19,582 | 18,642 | 18,284 |
| '14 WE | 14,074 | 14,500 | 18,940 | 20,210 | 20,660 | 24,446 | 25,398 | 25,264 | 21,574 | 21,334 | 21,026 | 19,764 |
| '15 WD | 15,786 | 16,646 | 18,988 | 19,864 | 21,050 | 22,058 | 23,002 | 21,918 | 20,280 | 19,314 | 18,768 | 18,134 |
| '15 WE | 16,482 | 15,992 | 20,094 | 21,458 | 21,266 | 24,854 | 24,112 | 24,186 | 21,486 | 20,852 | 21,404 | 20,504 |
| '16 WD | 15,830 | 16,432 | 19,650 |        |        |        |        |        |        |        |        |        |
| '16 WE | 16,850 | 17,160 | 21,194 |        |        |        |        |        |        |        |        |        |

Note: 'Weekday' defined as Monday-Friday, 'Weekend' defined as Saturday-Sunday

### Weekday/Weekend Monthly Average Daily Traffic ('12-'16)



|         | Mar-12 | Mar-13 | Mar-14 | Mar-15 | Mar-16 |
|---------|--------|--------|--------|--------|--------|
| Weekday | 18,258 | 18,544 | 18,298 | 18,988 | 19,650 |
| Weekend | 18,820 | 19,688 | 18,940 | 20,094 | 21,194 |