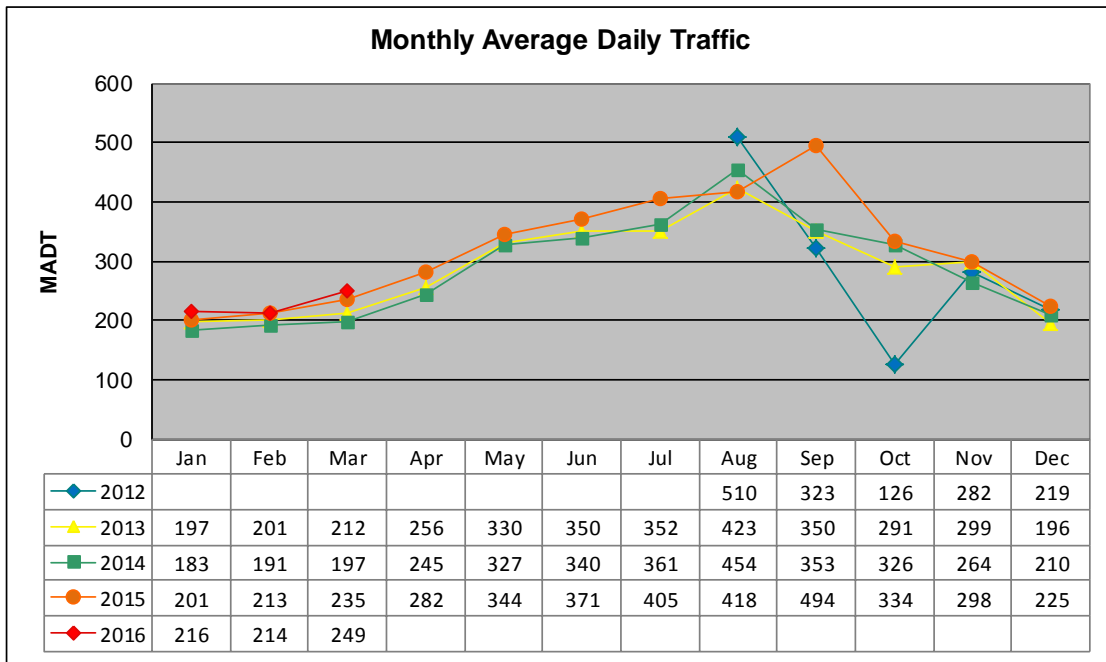


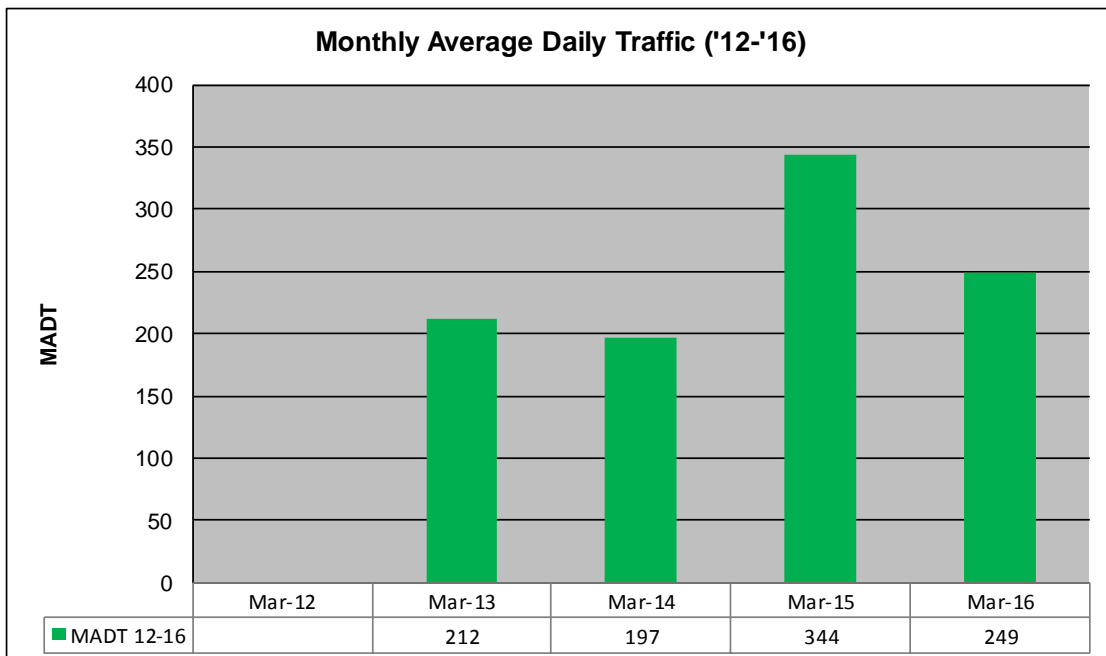
MONTHLY REPORT, STATION NO. 231 (ATR)

MARCH 2016

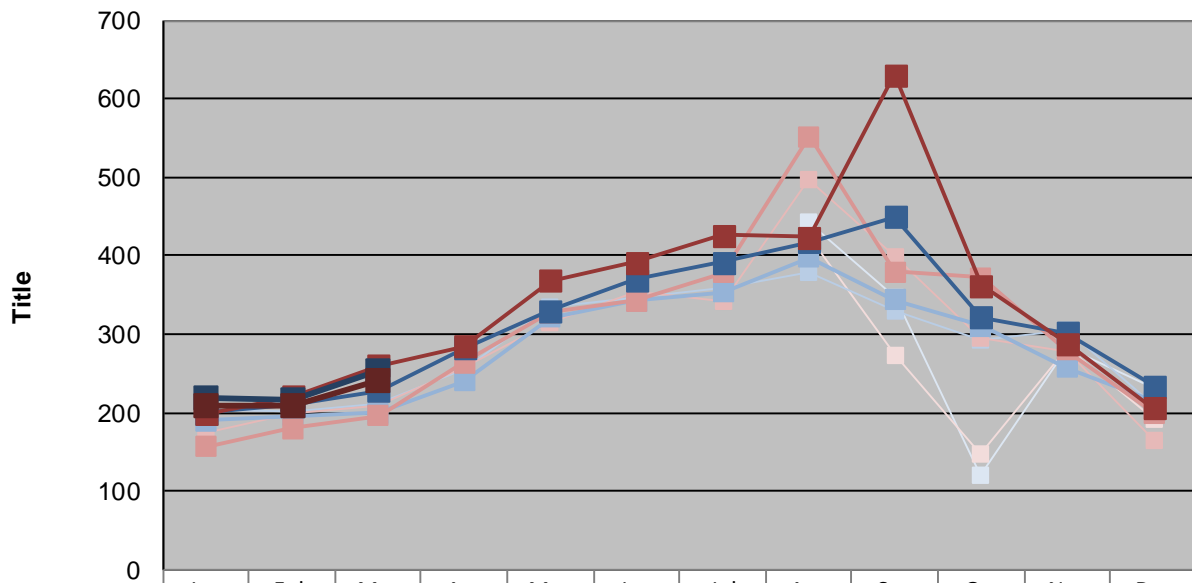
| | | |
|---|----------------------|----------------------------------|
| Station Measurement: VOLUME/SPEED/CLASS | | |
| Route: CSAH 12 | Route Direction: E/W | Lanes: 2 |
| County: Wadena | Closest City: Nimrod | |
| Functional Class: Rural Major Collector | | |
| Location: 1.6 MI E OF CSAH18, E OF NIMROD | | |
| Ref Post: 002+00.071 | True Mile: 2.071 | Sequence No. 29731 |
| Volume: 7,704 | | MADT: 249 |
| Weekday (M-F) MADT: 252 | | Weekend (Sa-Su) MADT: 242 |



Note: Began collecting data August 2012



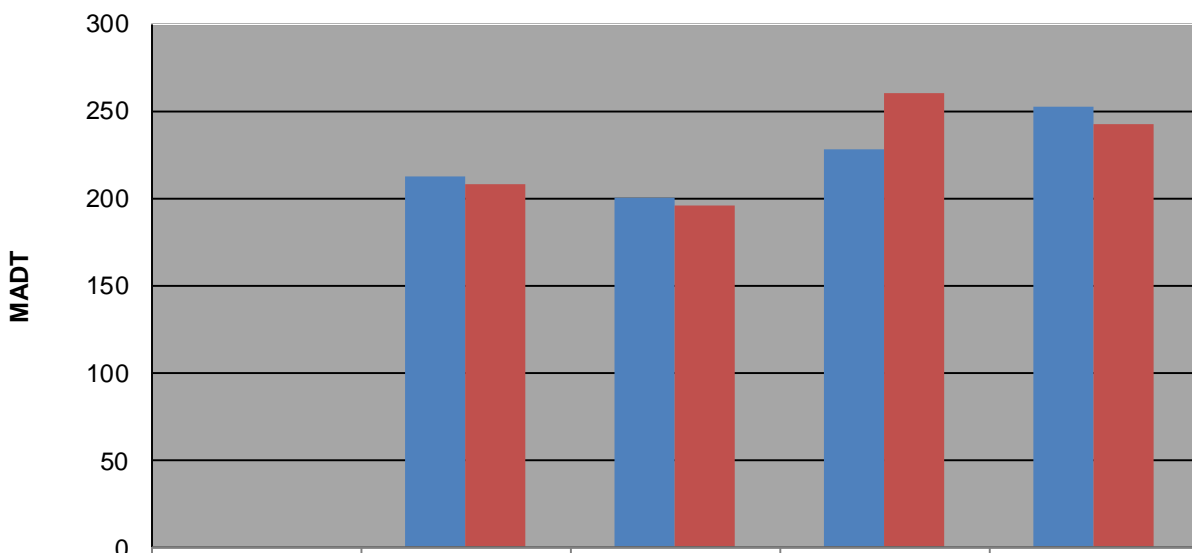
Weekday (WD)/Weekend (WE) Monthly Average Daily Traffic



| | Jan | Feb | Mar | Apr | May | Jun | Jul | Aug | Sep | Oct | Nov | Dec |
|--------|-----|-----|-----|-----|-----|-----|-----|-----|-----|-----|-----|-----|
| '12 WD | | | | | | | | 442 | 348 | 120 | 282 | 232 |
| '12 WE | | | | | | | | 426 | 274 | 148 | 282 | 192 |
| '13 WD | 204 | 202 | 212 | 256 | 334 | 348 | 358 | 378 | 330 | 292 | 306 | 210 |
| '13 WE | 174 | 198 | 208 | 258 | 314 | 354 | 342 | 498 | 398 | 296 | 278 | 164 |
| '14 WD | 190 | 196 | 200 | 240 | 322 | 342 | 354 | 398 | 344 | 310 | 258 | 214 |
| '14 WE | 156 | 180 | 196 | 264 | 328 | 342 | 378 | 552 | 380 | 372 | 280 | 200 |
| '15 WD | 200 | 210 | 228 | 282 | 330 | 370 | 392 | 418 | 450 | 322 | 302 | 234 |
| '15 WE | 198 | 220 | 260 | 284 | 368 | 392 | 426 | 424 | 630 | 362 | 288 | 206 |
| '16 WD | 218 | 216 | 252 | | | | | | | | | |
| '16 WE | 210 | 210 | 242 | | | | | | | | | |

Note: 'Weekday' defined as Monday-Friday, 'Weekend' defined as Saturday-Sunday

Weekday/Weekend Monthly Average Daily Traffic ('12-'16)



| | Mar-12 | Mar-13 | Mar-14 | Mar-15 | Mar-16 |
|---------|--------|--------|--------|--------|--------|
| Weekday | | 212 | 200 | 228 | 252 |
| Weekend | | 208 | 196 | 260 | 242 |