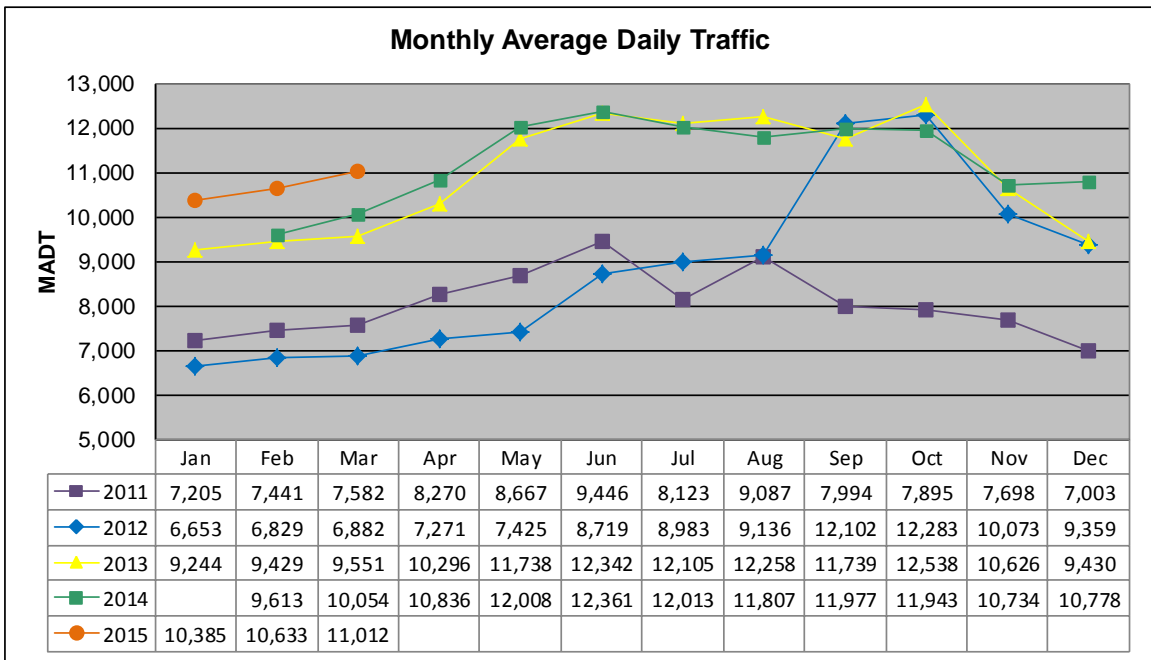


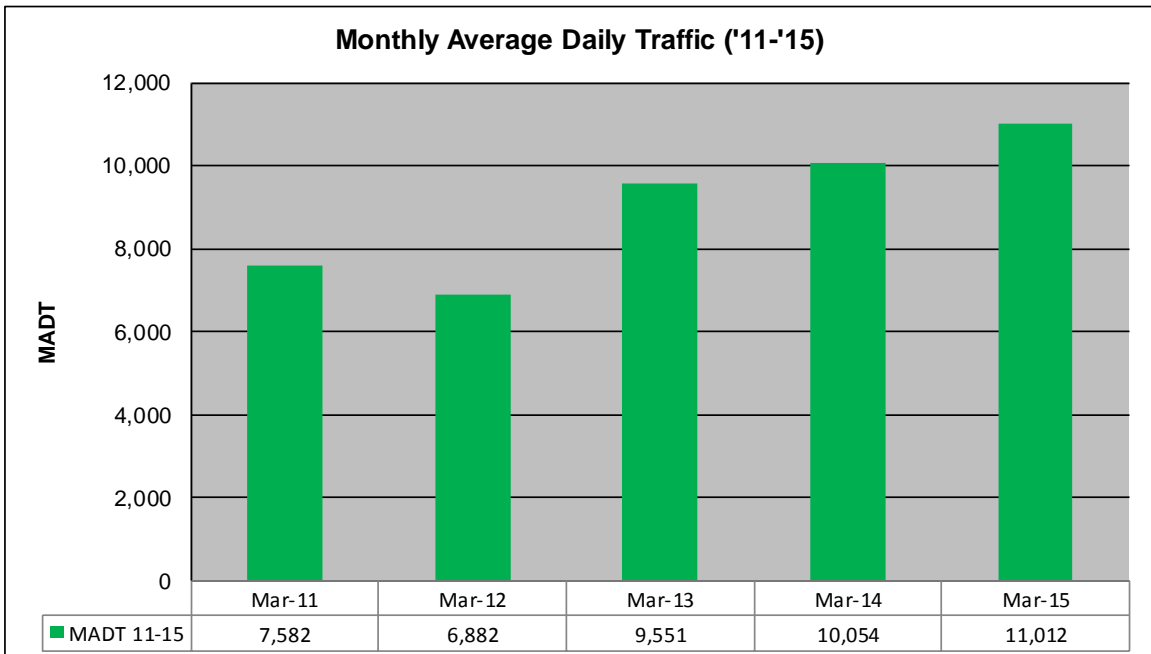
MONTHLY REPORT, STATION NO. 45 (WIM)

MARCH 2015

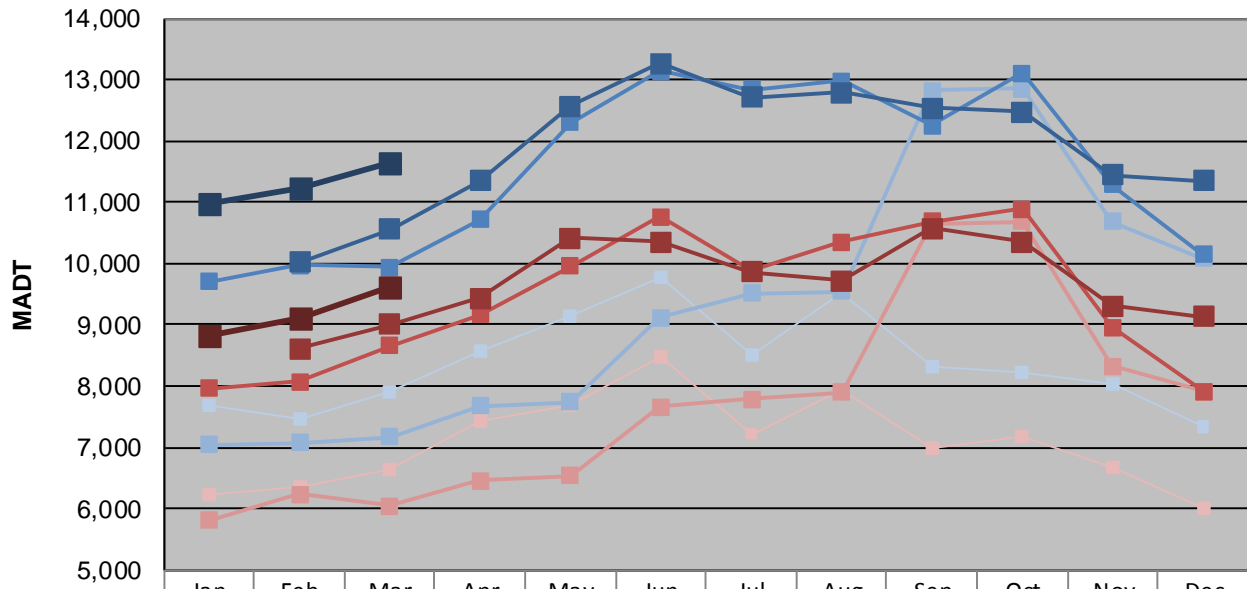
Station Measurement: VOLUME/SPEED/CLASS/WEIGHT		
Route: CSAH 14	Route Direction: E/W	Lanes: 2
County: Anoka	Closest City: Blaine	
Functional Class: Urban Other Principal Arterial		
Location: .7 MI W OF CSAH17 (LEXINGTON AVE NE) IN BLAINE		
Ref Post: 010+00.100	True Mile: 10.1	Sequence No. 9893
Volume: 341,371		MADT: 11,012
Weekday (M-F) MADT: 9,632		Weekend (Sa-Su) MADT: 9,632



Note: Volume data reported as ATR 422 from 2011-2013... Decrease in traffic April/May 2012 due to construction... Increase in traffic beginning September 2012 due to a new turn lane... No data January 2014 due to site issues



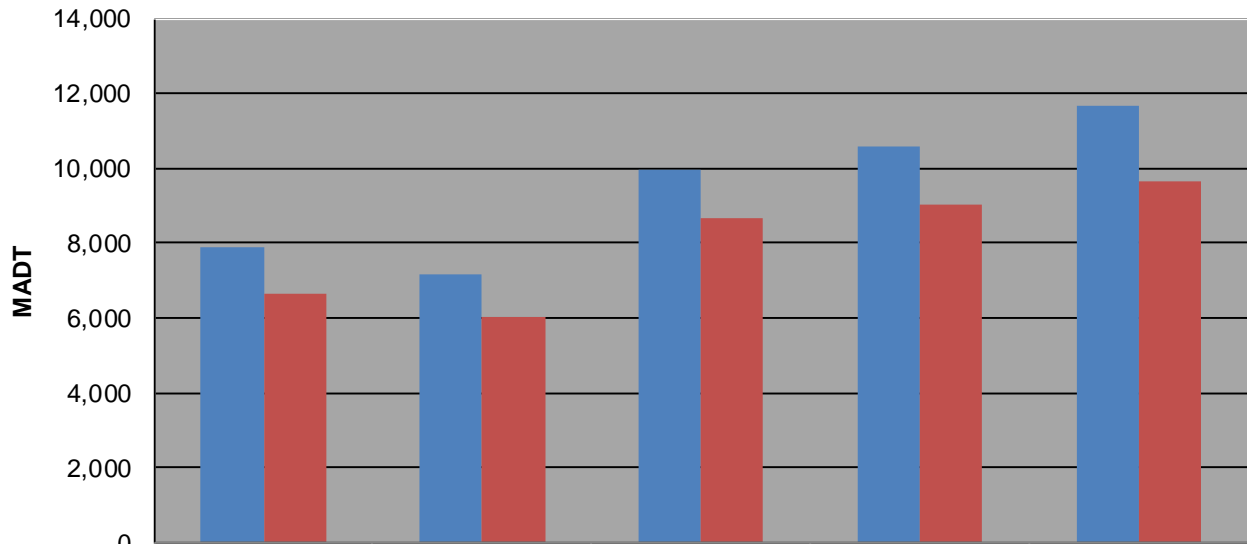
Weekday (WD)/Weekend (WE) Monthly Average Daily Traffic



	Jan	Feb	Mar	Apr	May	Jun	Jul	Aug	Sep	Oct	Nov	Dec
'11 WD	7,670	7,474	7,910	8,566	9,128	9,778	8,522	9,520	8,308	8,226	8,046	7,338
'11 WE	6,234	6,366	6,656	7,434	7,678	8,478	7,216	7,940	6,986	7,192	6,658	6,014
'12 WD	7,042	7,072	7,174	7,672	7,744	9,114	9,508	9,542	12,828	12,862	10,690	10,082
'12 WE	5,810	6,234	6,040	6,454	6,536	7,668	7,790	7,900	10,648	10,686	8,320	7,908
'13 WD	9,708	9,970	9,940	10,716	12,308	13,132	12,832	12,986	12,260	13,110	11,294	10,152
'13 WE	7,966	8,080	8,666	9,166	9,950	10,762	9,880	10,352	10,678	10,892	8,954	7,908
'14 WD		10,014	10,566	11,346	12,570	13,270	12,710	12,786	12,538	12,468	11,452	11,352
'14 WE		8,614	9,008	9,434	10,410	10,356	9,862	9,724	10,576	10,356	9,302	9,128
'15 WD	10,972	11,240	11,650									
'15 WE	8,836	9,116	9,632									

Note: 'Weekday' defined as Monday-Friday, 'Weekend' defined as Saturday-Sunday

Weekday/Weekend Monthly Average Daily Traffic ('11-'15)



	Mar-11	Mar-12	Mar-13	Mar-14	Mar-15
Weekday	7,910	7,174	9,940	10,566	11,650
Weekend	6,656	6,040	8,666	9,008	9,632