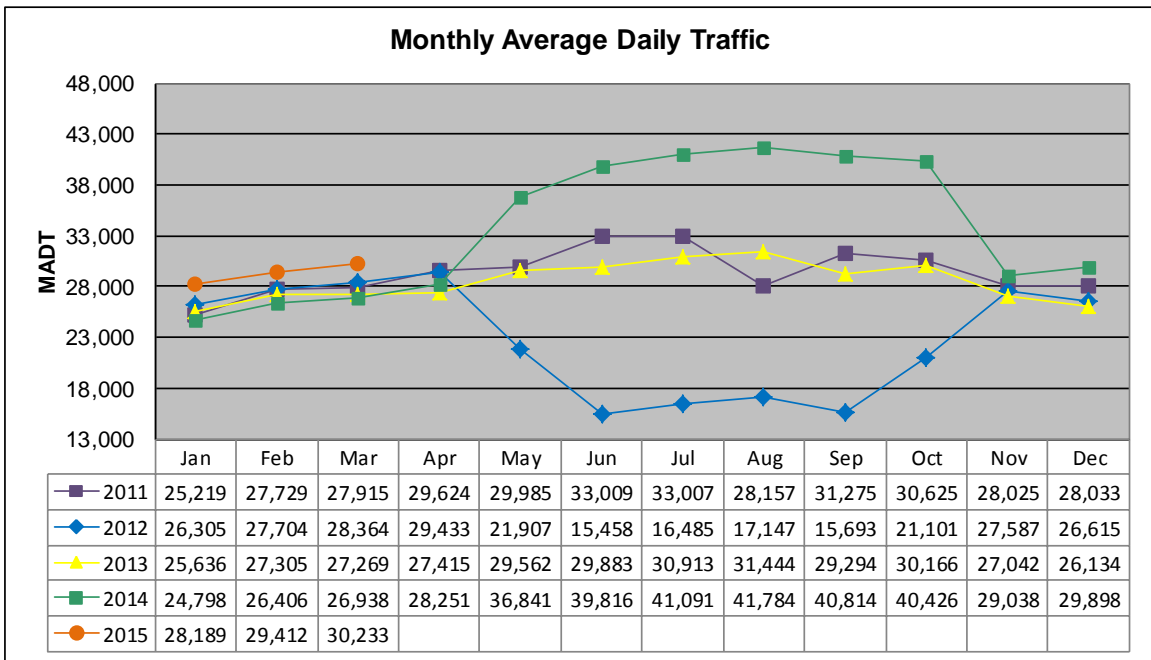


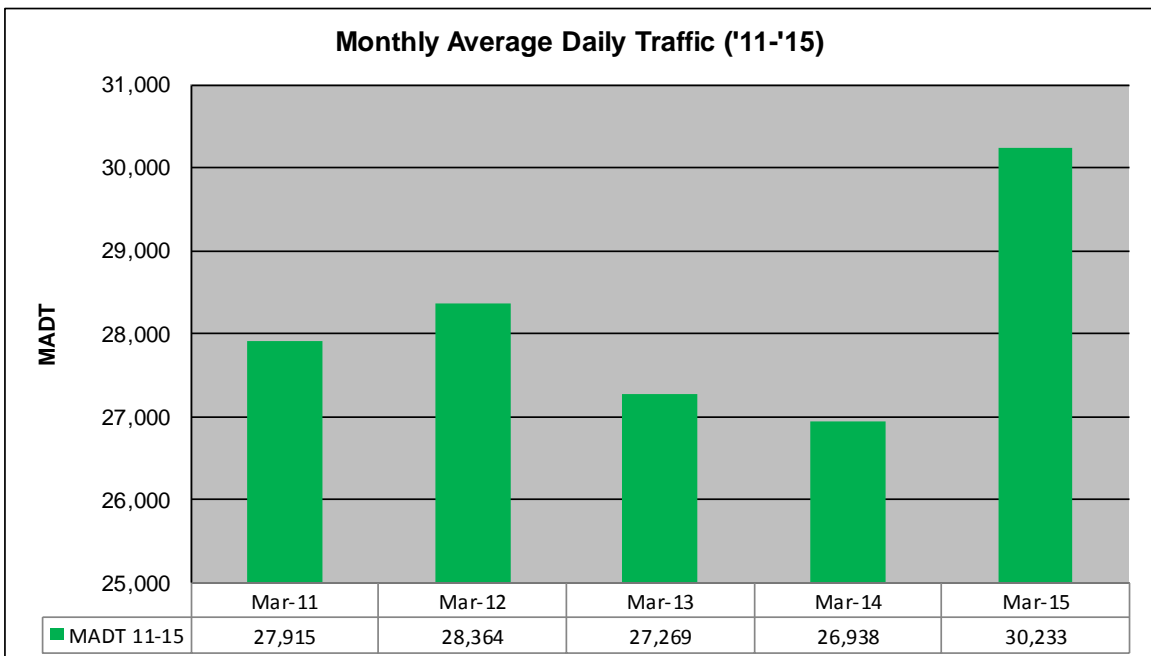
MONTHLY REPORT, STATION NO. 38 (WIM)

MARCH 2015

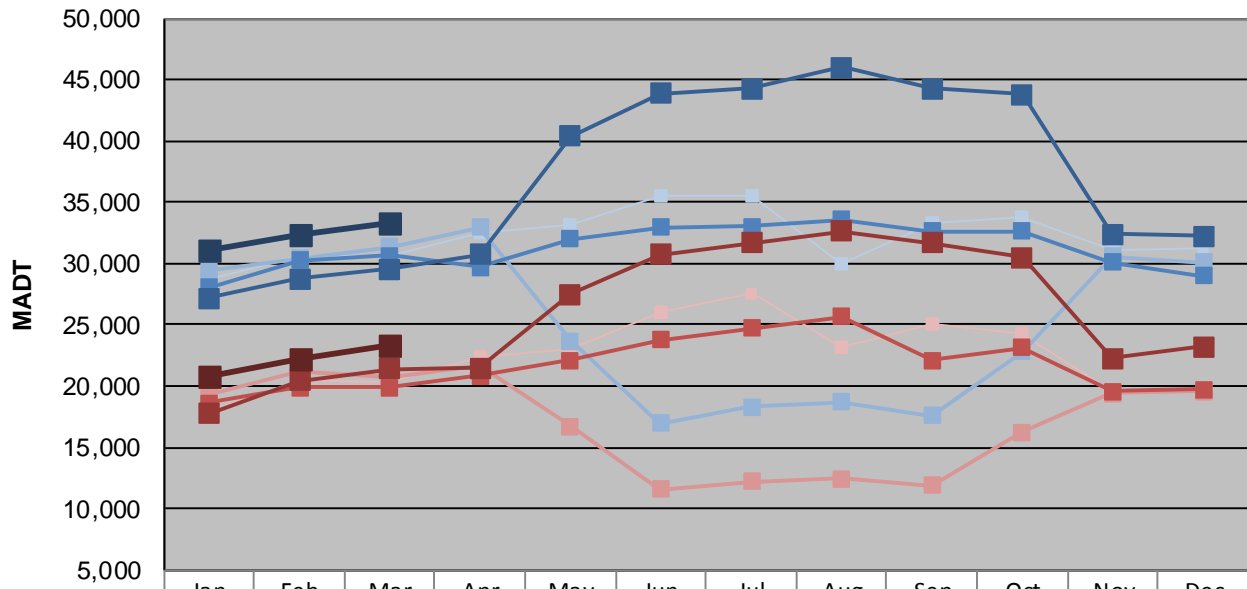
Station Measurement: VOLUME/SPEED/CLASS/WEIGHT		
Route: I-535	Route Direction: N/S	Lanes: 4
County: St Louis	Closest City: Duluth	
Functional Class: Urban Principal Arterial - Interstate		
Location: SW OF MSAS149 (GARFIELD AVE) IN DULUTH		
Ref Post: 001+00.053	True Mile: 1.053	Sequence No. 9823
Volume: 937,215		MADT: 30,233
Weekday (M-F) MADT: 33,234		Weekend (Sa-Su) MADT: 23,328



Note: Decrease in traffic June to September 2010, August 2011, and May to October 2012 due to construction on I-535... Increase in traffic May to September 2014 due to detour from I-35



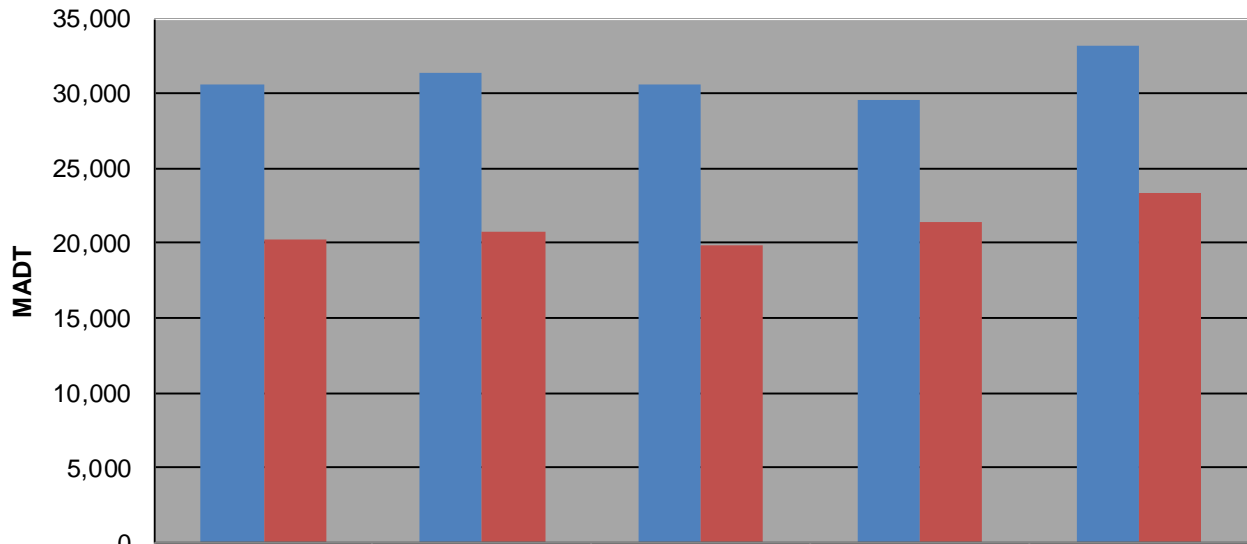
Weekday (WD)/Weekend (WE) Monthly Average Daily Traffic



	Jan	Feb	Mar	Apr	May	Jun	Jul	Aug	Sep	Oct	Nov	Dec
'11 WD	28,722	30,600	30,642	32,540	33,082	35,532	35,460	29,982	33,378	33,740	31,034	31,172
'11 WE	17,994	20,554	20,256	22,378	23,012	26,096	27,534	23,134	25,010	24,254	19,572	19,866
'12 WD	29,374	30,388	31,334	32,922	23,698	16,972	18,274	18,728	17,590	22,788	30,604	30,108
'12 WE	19,280	21,126	20,734	21,666	16,692	11,574	12,244	12,466	11,900	16,278	19,394	19,574
'13 WD	28,082	30,274	30,670	29,696	31,990	32,926	33,066	33,624	32,598	32,646	30,074	29,020
'13 WE	18,636	19,884	19,906	20,848	22,088	23,800	24,684	25,706	22,132	23,164	19,610	19,770
'14 WD	27,156	28,780	29,558	30,716	40,404	43,894	44,280	46,004	44,298	43,766	32,426	32,254
'14 WE	17,746	20,472	21,432	21,476	27,506	30,708	31,648	32,648	31,704	30,536	22,264	23,218
'15 WD	31,118	32,296	33,234									
'15 WE	20,786	22,204	23,328									

Note: 'Weekday' defined as Monday-Friday, 'Weekend' defined as Saturday-Sunday

Weekday/Weekend Monthly Average Daily Traffic ('11-'15)



	Mar-11	Mar-12	Mar-13	Mar-14	Mar-15
Weekday	30,642	31,334	30,670	29,558	33,234
Weekend	20,256	20,734	19,906	21,432	23,328