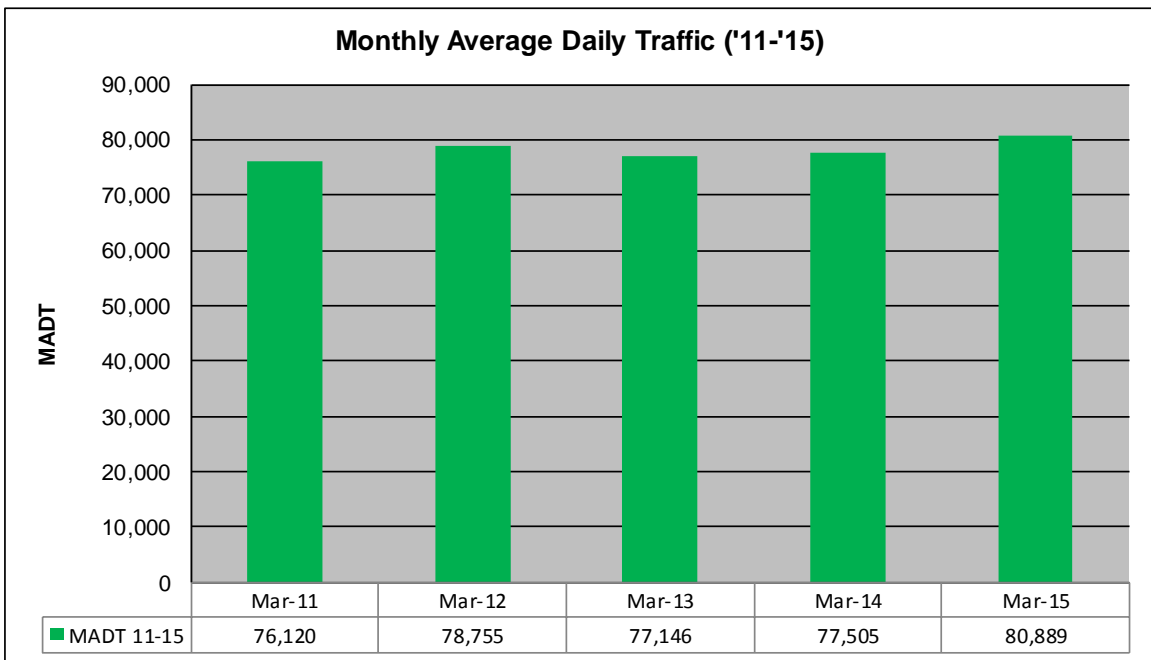
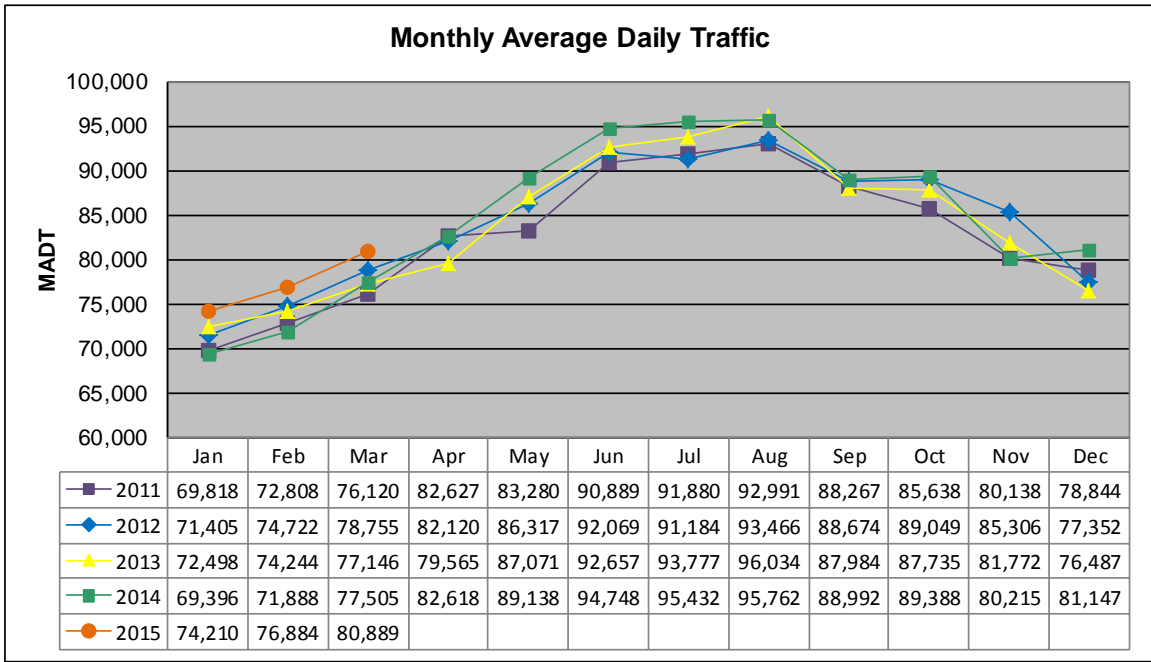


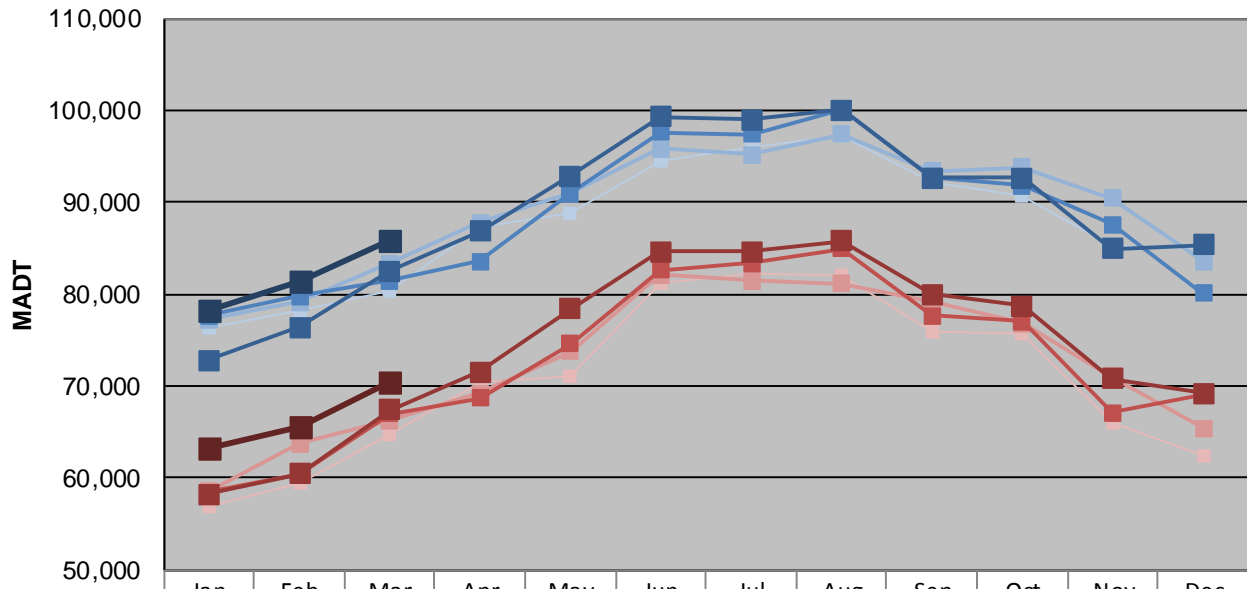
MONTHLY REPORT, STATION NO. 354 (ATR)

MARCH 2015

Station Measurement: VOLUME/SPEED/CLASS		
Route: I-94	Route Direction: E/W	Lanes: 6
County: Washington		Closest City: Woodbury
Functional Class: Urban Principal Arterial - Interstate		
Location: W OF MSAS127 (COTTAGE GROVE DR) IN WOODBURY		
Ref Post: 252+00.500	True Mile: 253.096	Sequence No. 9861
Volume: 2,507,546		MADT: 80,889
Weekday (M-F) MADT: 85,758		Weekend (Sa-Su) MADT: 70,352



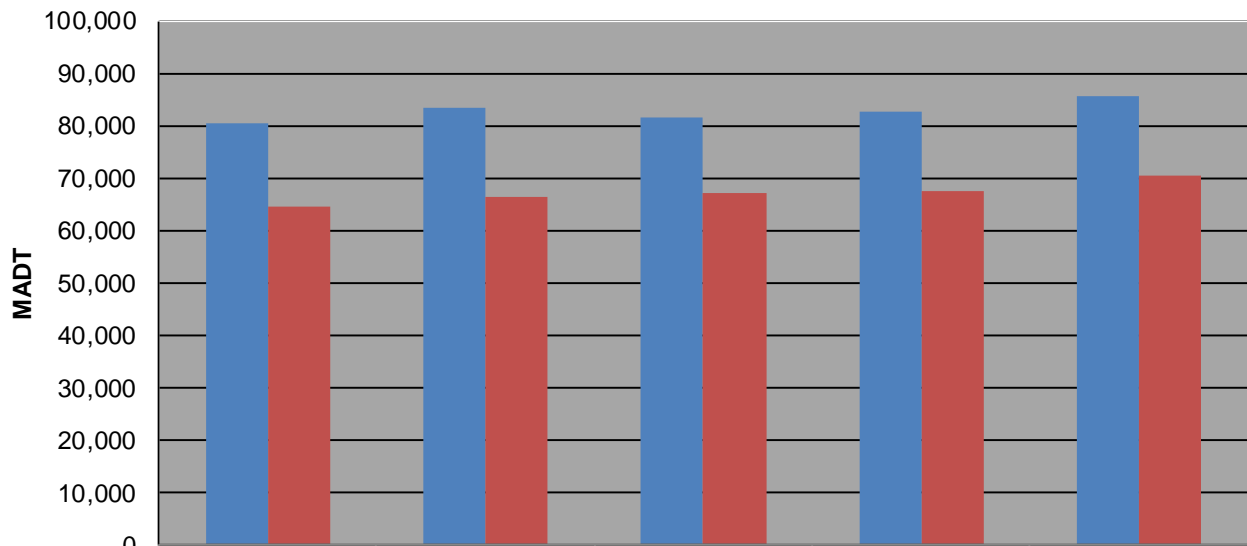
Weekday (WD)/Weekend (WE) Monthly Average Daily Traffic



	Jan	Feb	Mar	Apr	May	Jun	Jul	Aug	Sep	Oct	Nov	Dec
'11 WD	76,276	78,154	80,408	87,378	88,804	94,438	95,910	97,284	92,118	90,670	85,182	85,008
'11 WE	56,844	59,416	64,668	70,464	71,172	81,102	82,308	82,006	75,894	75,608	66,038	62,464
'12 WD	77,226	79,142	83,328	87,846	90,914	95,812	95,182	97,380	93,396	93,838	90,398	83,548
'12 WE	58,538	63,762	66,240	69,226	73,726	82,062	81,484	81,182	79,232	76,772	71,048	65,438
'13 WD	77,628	79,774	81,430	83,608	91,004	97,660	97,428	100,06	92,722	91,792	87,596	80,086
'13 WE	58,414	60,422	66,980	68,692	74,580	82,652	83,390	84,950	77,708	77,064	67,144	69,076
'14 WD	72,822	76,448	82,498	86,864	92,856	99,310	99,032	100,04	92,664	92,694	84,910	85,404
'14 WE	58,254	60,490	67,428	71,594	78,442	84,606	84,616	85,810	79,954	78,740	70,826	69,232
'15 WD	78,308	81,420	85,758									
'15 WE	63,302	65,544	70,352									

Note: 'Weekday' defined as Monday-Friday, 'Weekend' defined as Saturday-Sunday

Weekday/Weekend Monthly Average Daily Traffic ('11-'15)



	Mar-11	Mar-12	Mar-13	Mar-14	Mar-15
Weekday	80,408	83,328	81,430	82,498	85,758
Weekend	64,668	66,240	66,980	67,428	70,352