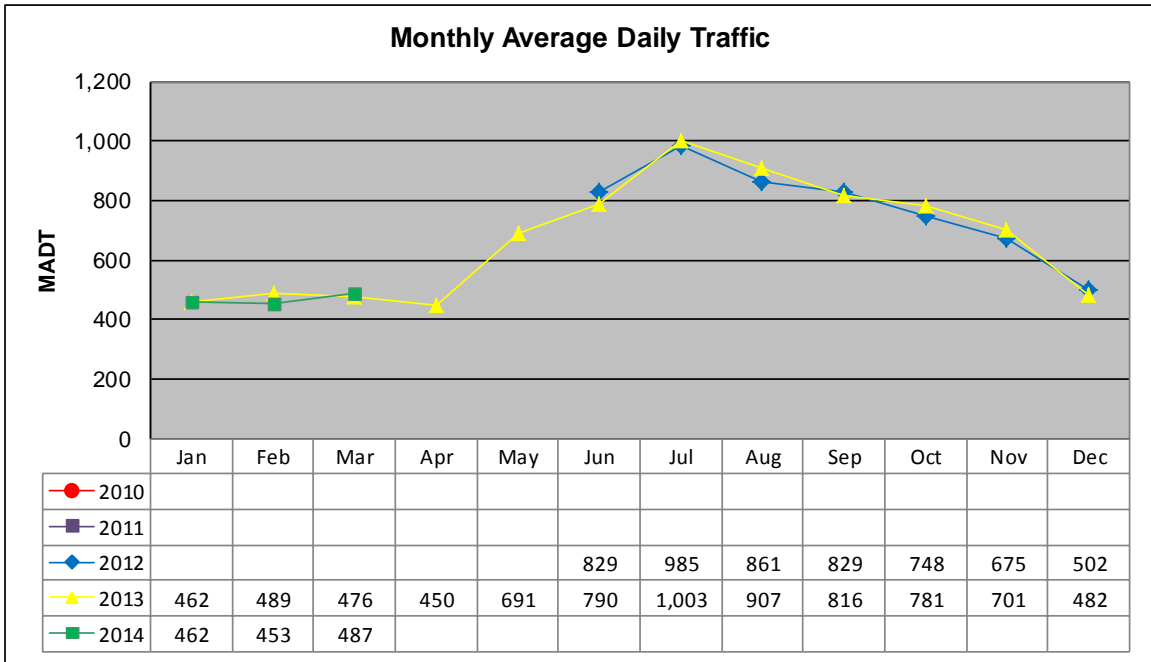


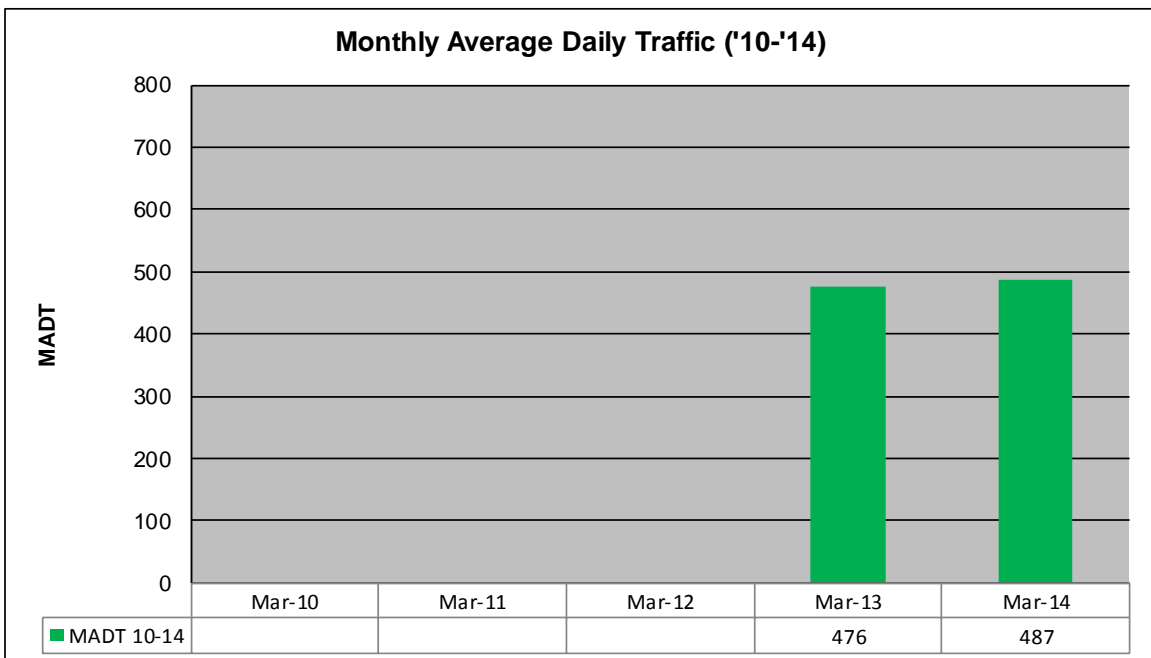
# MONTHLY REPORT, STATION NO. 228 (ATR)

## MARCH 2014

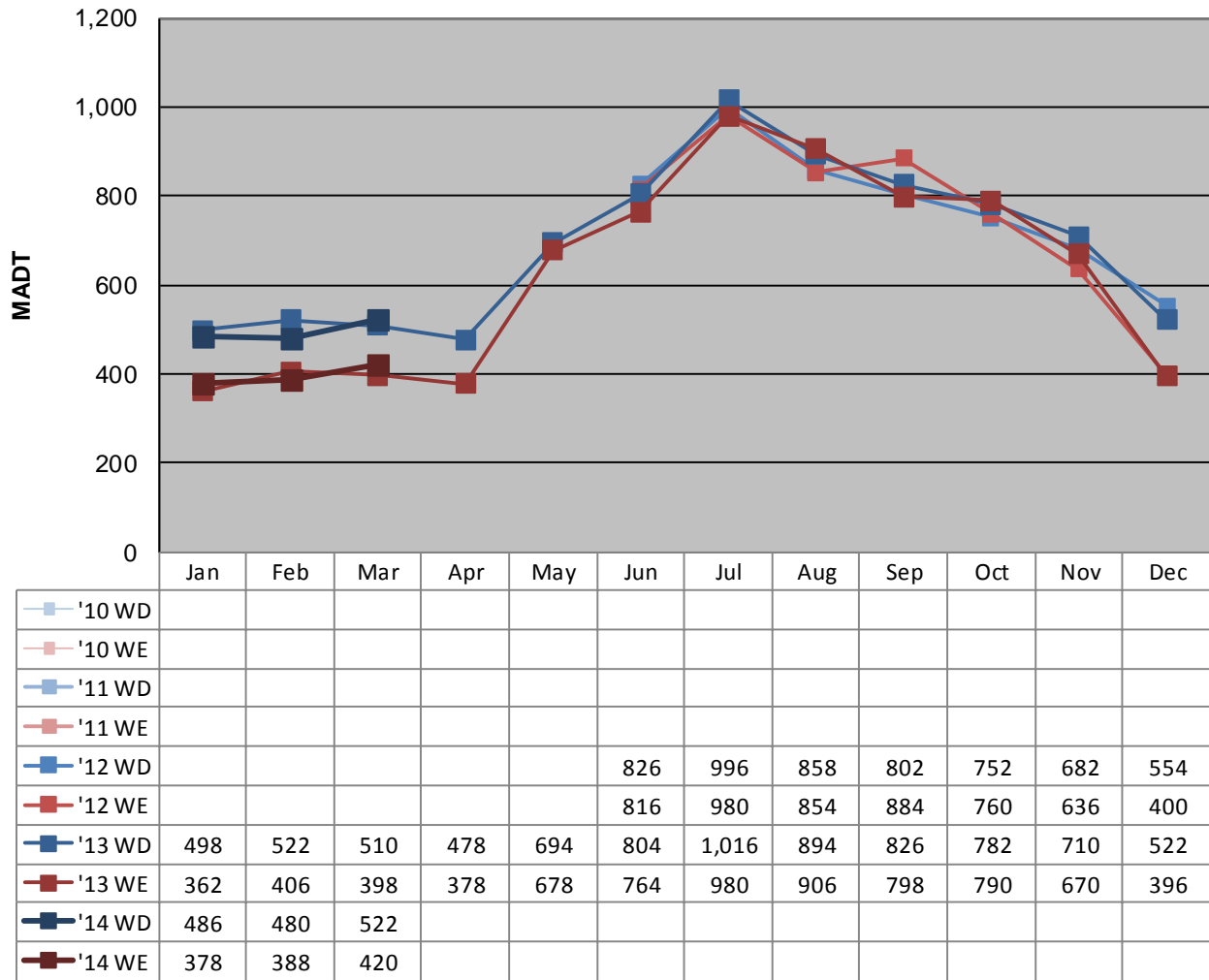
Station Measurement: VOLUME/SPEED/CLASS		
Route: CSAH 7	Route Direction: N/S	Lanes: 2
County: Itasca	Closest City: Hibbing	
Functional Class: Rural Major Collector		
Location: N OF CR339, W OF HIBBING		
Ref Post: 018+00.891	True Mile: 18.891	Sequence No. 30654
<b>Volume: 15,098</b>		<b>MADT: 487</b>
<b>Weekday (M-F) MADT: 510</b>		<b>Weekend (Sa-Su) MADT: 398</b>



Note: Began collecting data June 2012



**Weekday (WD)/Weekend (WE) Monthly Average Daily Traffic**



Note: 'Weekday' defined as Monday-Friday, 'Weekend' defined as Saturday-Sunday

**Weekday/Weekend Monthly Average Daily Traffic ('10-'14)**

