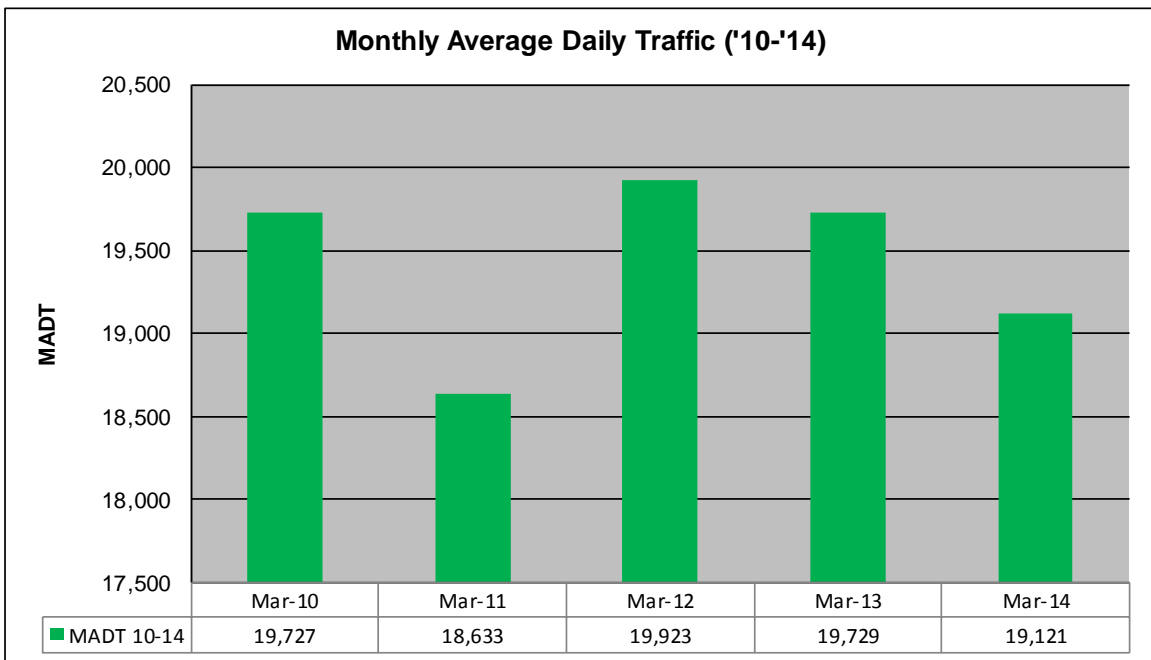
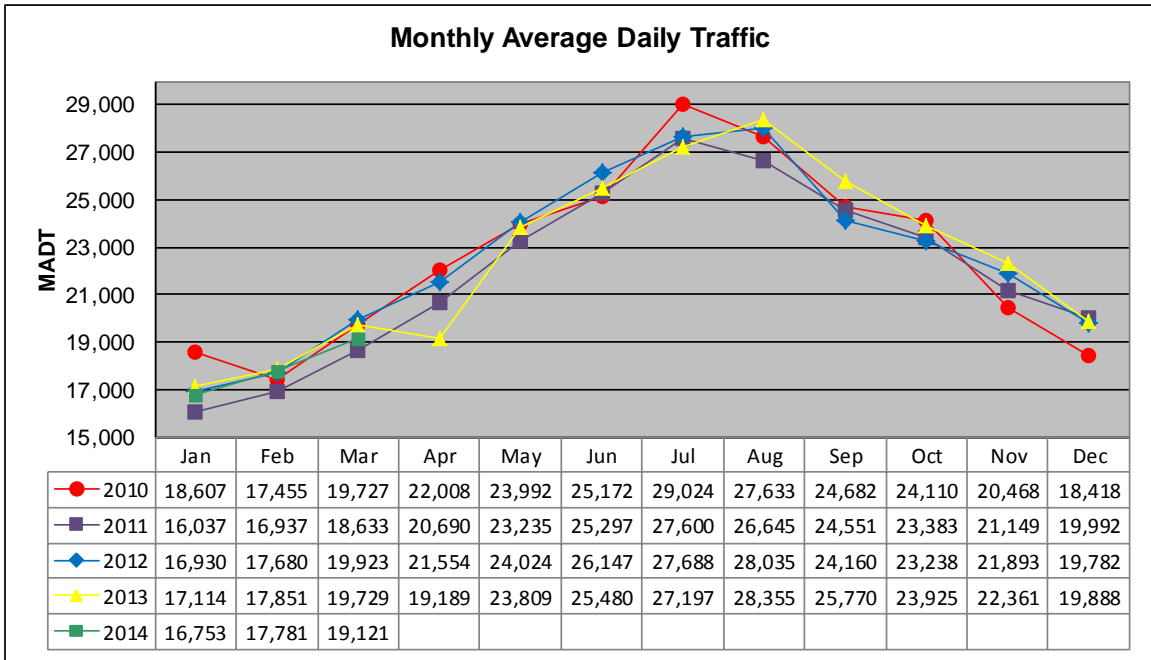


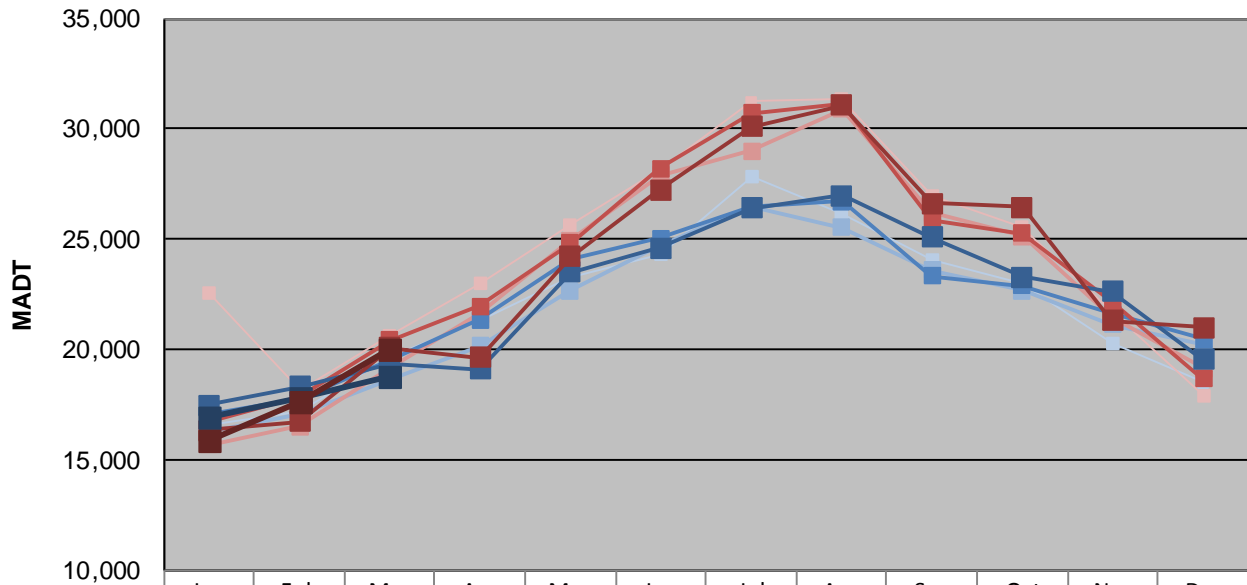
# MONTHLY REPORT, STATION NO. 175 (ATR)

## MARCH 2014

Station Measurement: VOLUME/SPEED/CLASS		
Route: I-94	Route Direction: E/W	Lanes: 4
County: Stearns		Closest City: Sauk Centre
Functional Class: Rural Principal Arterial - Interstate		
Location: E OF CR186, SE OF SAUK CENTRE		
Ref Post: 128+00.640	True Mile: 129	Sequence No. 6776
<b>Volume: 592,751</b>		<b>MADT: 19,121</b>
<b>Weekday (M-F) MADT: 18,768</b>		<b>Weekend (Sa-Su) MADT: 20,030</b>



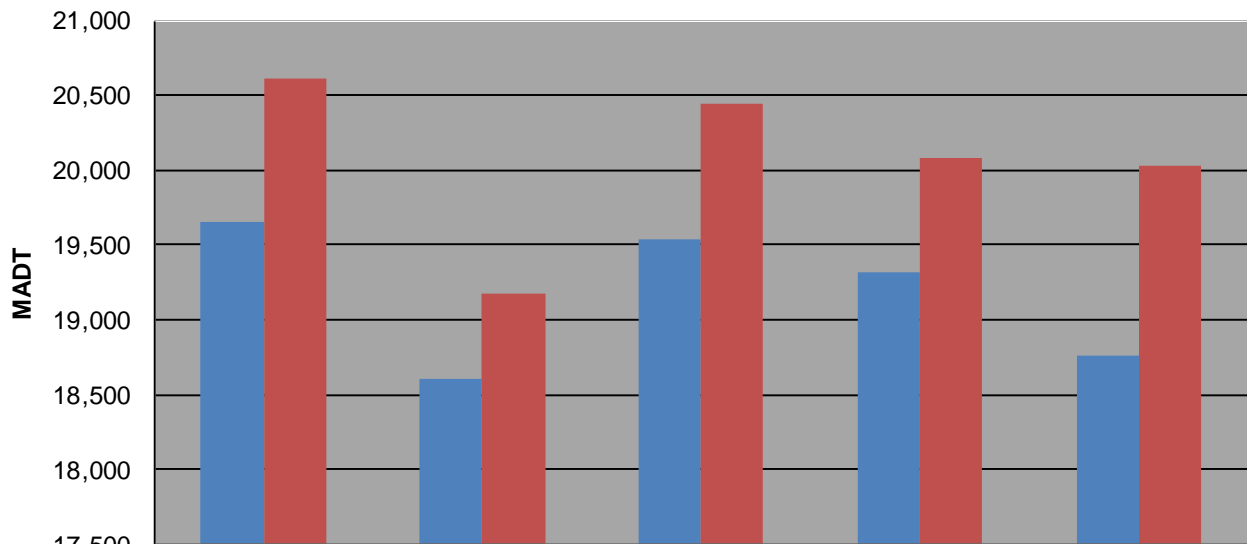
### Weekday (WD)/Weekend (WE) Monthly Average Daily Traffic



	Jan	Feb	Mar	Apr	May	Jun	Jul	Aug	Sep	Oct	Nov	Dec
'10 WD	16,558	17,176	19,654	21,360	23,278	24,294	27,794	26,204	24,058	23,038	20,232	18,514
'10 WE	22,574	18,154	20,616	22,978	25,660	28,222	31,238	31,362	26,966	25,576	21,692	17,896
'11 WD	16,268	17,098	18,604	20,144	22,674	24,682	26,496	25,512	23,592	22,670	21,126	20,210
'11 WE	15,682	16,506	19,172	21,600	24,946	27,886	29,012	30,902	26,176	25,134	21,466	19,162
'12 WD	17,052	17,750	19,542	21,332	24,098	25,038	26,492	26,704	23,316	22,876	21,600	20,452
'12 WE	16,686	17,850	20,448	21,946	24,838	28,190	30,716	31,094	25,850	25,272	22,150	18,670
'13 WD	17,496	18,296	19,320	19,130	23,508	24,602	26,410	26,994	25,098	23,294	22,612	19,564
'13 WE	16,358	16,740	20,080	19,656	24,222	27,238	30,084	31,086	26,628	26,432	21,318	21,014
'14 WD	16,916	17,828	18,768									
'14 WE	15,870	17,664	20,030									

Note: 'Weekday' defined as Monday-Friday, 'Weekend' defined as Saturday-Sunday

### Weekday/Weekend Monthly Average Daily Traffic ('10-'14)



	Mar-10	Mar-11	Mar-12	Mar-13	Mar-14
Weekday	19,654	18,604	19,542	19,320	18,768
Weekend	20,616	19,172	20,448	20,080	20,030