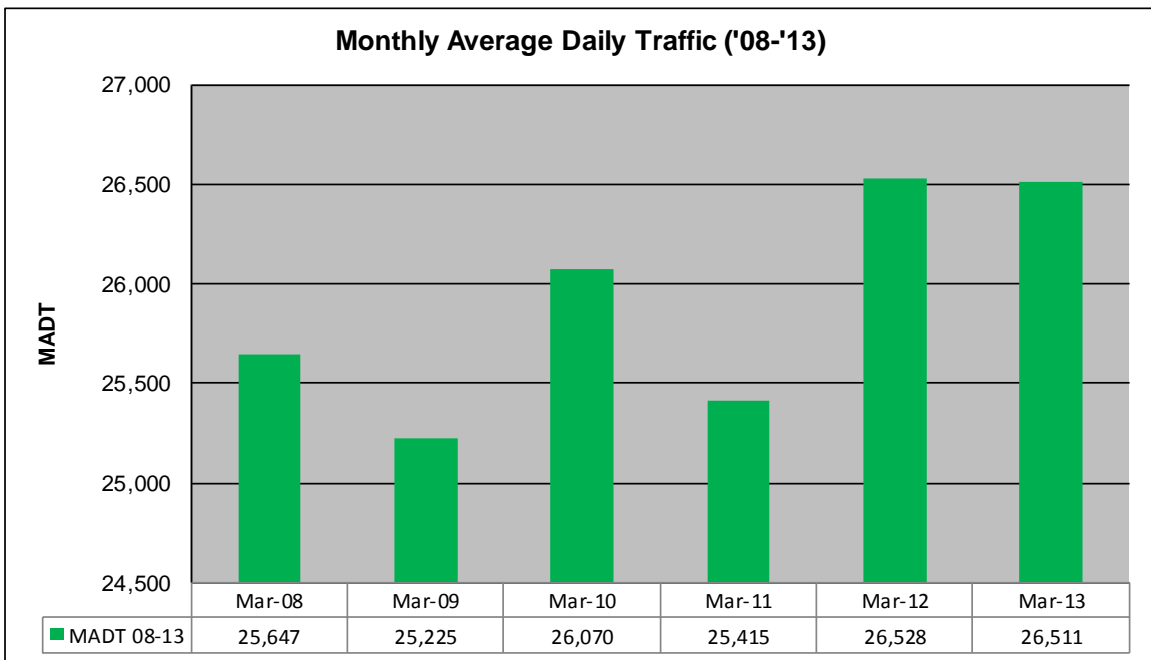
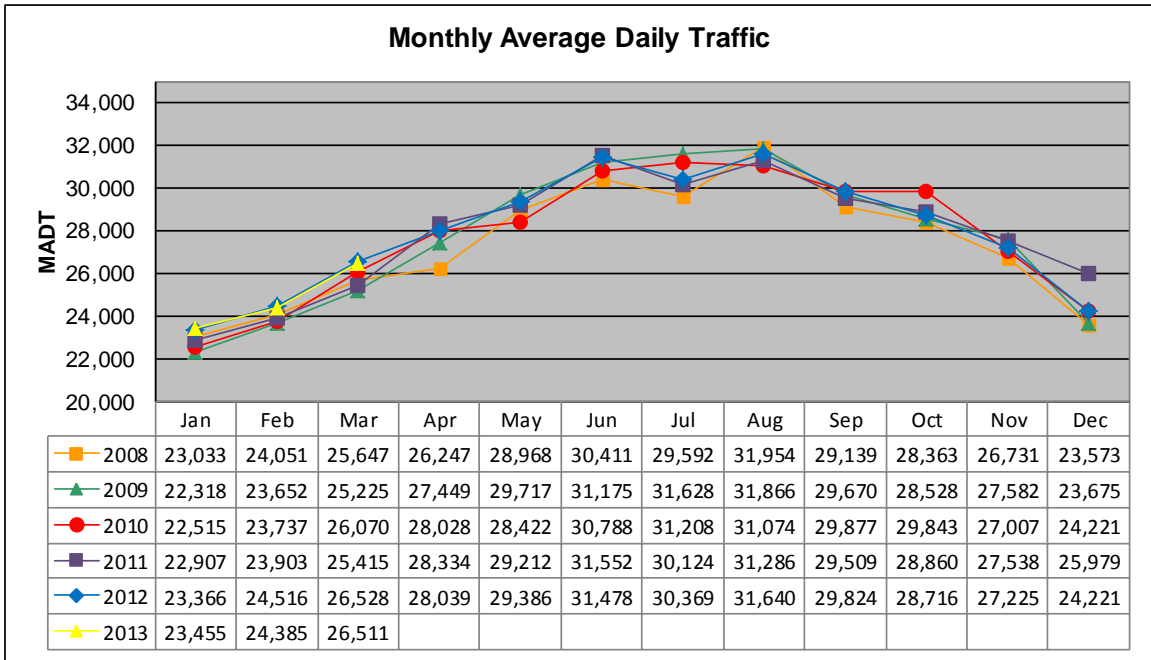


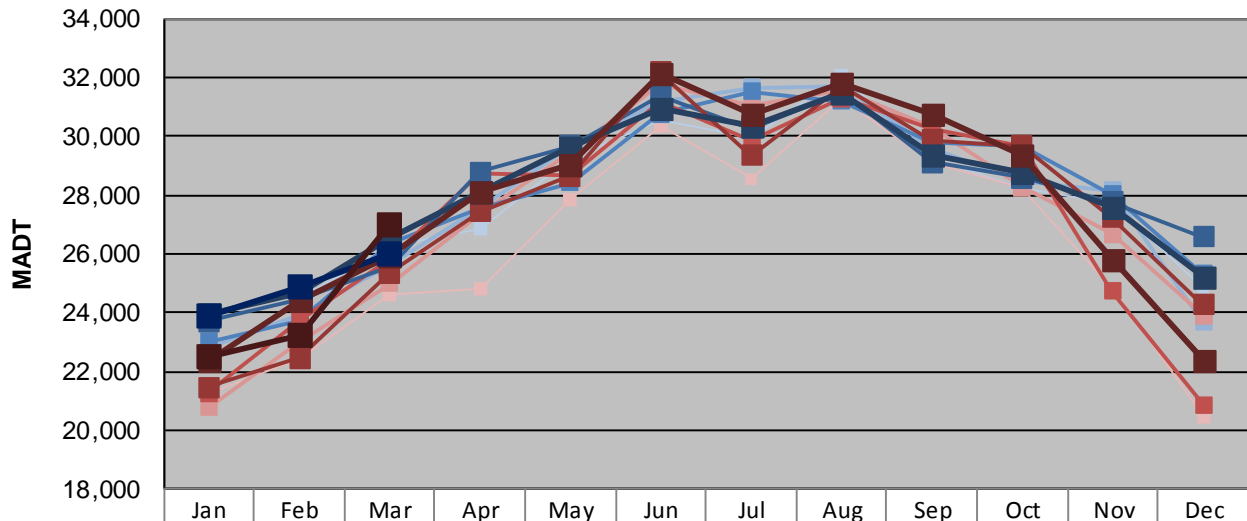
MONTHLY REPORT, STATION NO. 382 (ATR)

MARCH 2013

Station Measurement: VOLUME/SPEED/CLASS		
Route: TH 52	Route Direction: N/S	Lanes: 4
County: Dakota		Closest City: Coates
Functional Class: Rural Principal Arterial - Other		
Location: N OF 180TH ST E, S OF COATES		
Ref Post: 111+00.966	True Mile: 112.328	Sequence No. 9871
Volume: 821,835		MADT: 26,511
Weekday (M-F) MADT: 26,000		Weekend (Sa-Su) MADT: 26,982



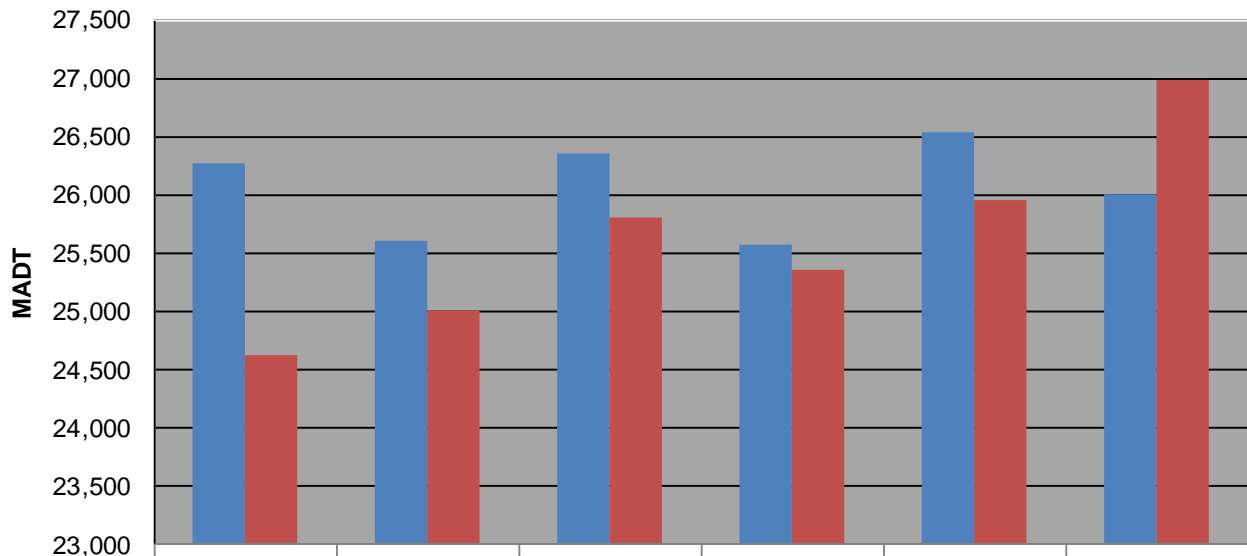
Weekday (WD)/Weekend (WE) Monthly Average Daily Traffic



	Jan	Feb	Mar	Apr	May	Jun	Jul	Aug	Sep	Oct	Nov	Dec
'08 WD	23,774	24,458	26,264	26,840	29,218	30,534	29,966	32,030	29,192	28,232	27,680	24,782
'08 WE	21,268	22,464	24,614	24,798	27,836	30,376	28,534	31,300	29,112	28,214	24,834	20,436
'09 WD	22,824	23,902	25,600	27,522	29,640	31,150	31,662	31,674	29,586	28,460	28,142	23,670
'09 WE	20,764	23,026	24,998	27,348	29,436	31,784	31,006	31,580	30,340	28,258	26,674	23,892
'10 WD	23,020	23,732	26,348	27,556	28,422	30,752	31,514	31,172	29,776	29,650	28,018	25,304
'10 WE	21,262	23,750	25,812	28,758	28,650	31,188	29,874	31,286	30,258	29,682	24,736	20,856
'11 WD	23,704	24,478	25,570	28,770	29,656	31,372	30,260	31,500	29,096	28,586	27,752	26,582
'11 WE	21,468	22,440	25,348	27,444	28,644	32,166	29,330	31,720	29,862	29,658	27,228	24,264
'12 WD	23,982	24,646	26,528	28,082	29,650	30,966	30,338	31,446	29,368	28,754	27,570	25,202
'12 WE	22,338	24,406	25,948	28,086	29,032	32,136	30,712	31,768	30,740	29,360	25,812	22,390
'13 WD	23,878	24,844	26,000									
'13 WE	22,482	23,240	26,982									

Note: 'Weekday' defined as Monday-Friday, 'Weekend' defined as Saturday-Sunday

Weekday/Weekend Monthly Average Daily Traffic ('08-'13)



	Mar-08	Mar-09	Mar-10	Mar-11	Mar-12	Mar-13
Weekday	26,264	25,600	26,348	25,570	26,528	26,000
Weekend	24,614	24,998	25,812	25,348	25,948	26,982