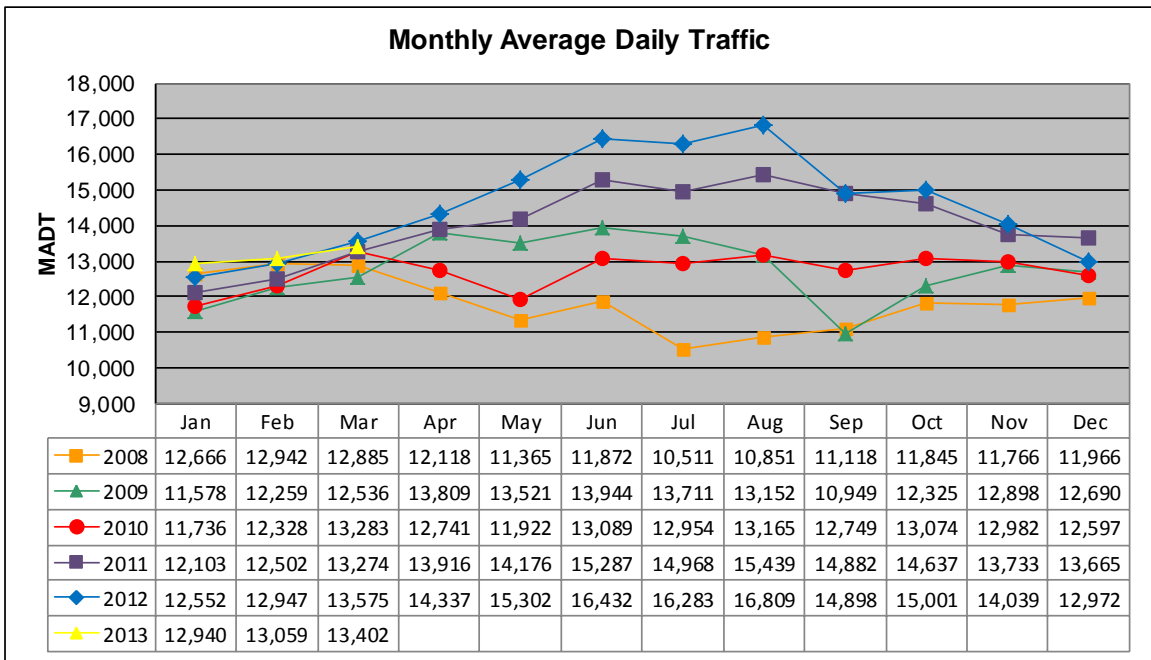


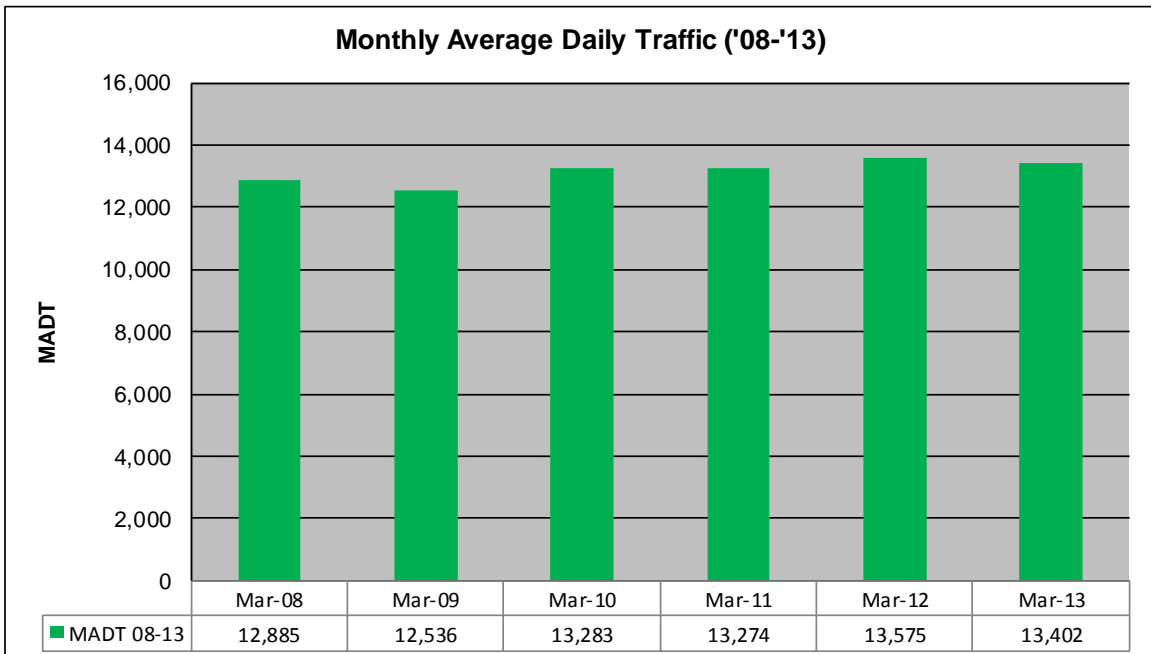
# MONTHLY REPORT, STATION NO. 351 (ATR)

## MARCH 2013

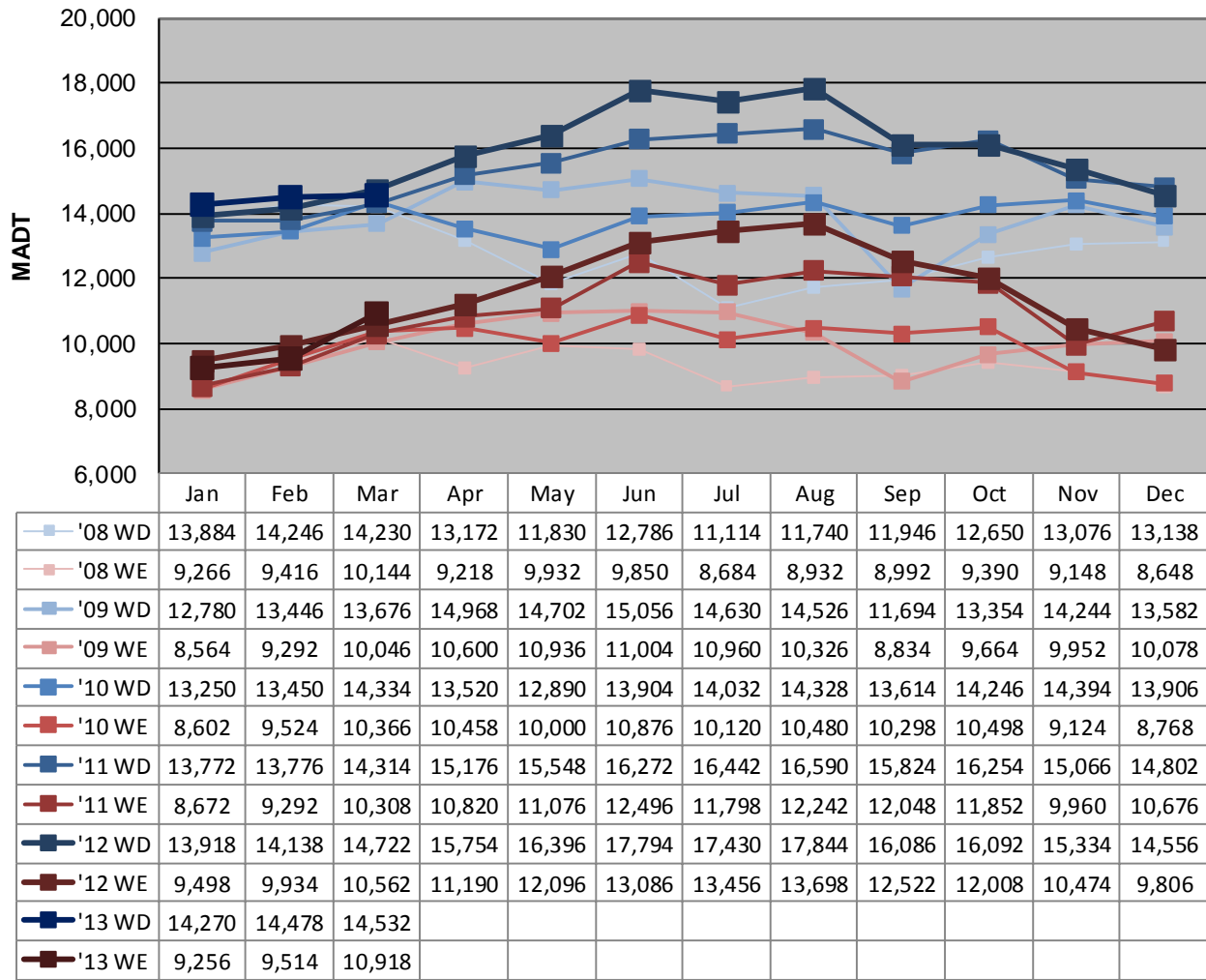
<b>Station Measurement: VOLUME</b>		
Route: TH 12	Route Direction: E/W	Lanes: 2
County: Hennepin		Closest City: Independence
Functional Class: Rural Principal Arterial - Other		
Location: W OF CSAH92 IN INDEPENDENCE		
Ref Post: 142+00.839	True Mile: 142.285	Sequence No. 6789
<b>Volume: 415,477</b>		<b>MADT: 13,402</b>
<b>Weekday (M-F) MADT: 14,532</b>		<b>Weekend (Sa-Su) MADT: 10,918</b>



Note: Decrease in traffic April to November 2008, September/October 2009, and April/May 2010 due to construction on TH 12



**Weekday (WD)/Weekend (WE) Monthly Average Daily Traffic**



Note: 'Weekday' defined as Monday-Friday, 'Weekend' defined as Saturday-Sunday

**Weekday/Weekend Monthly Average Daily Traffic ('08-'13)**

