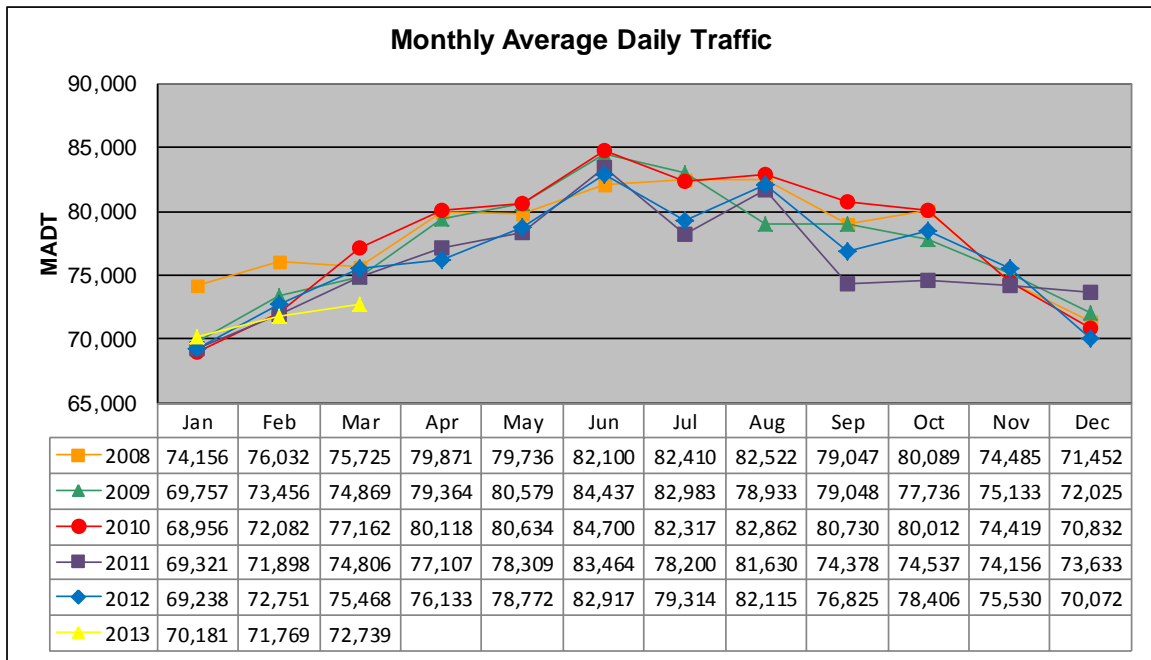


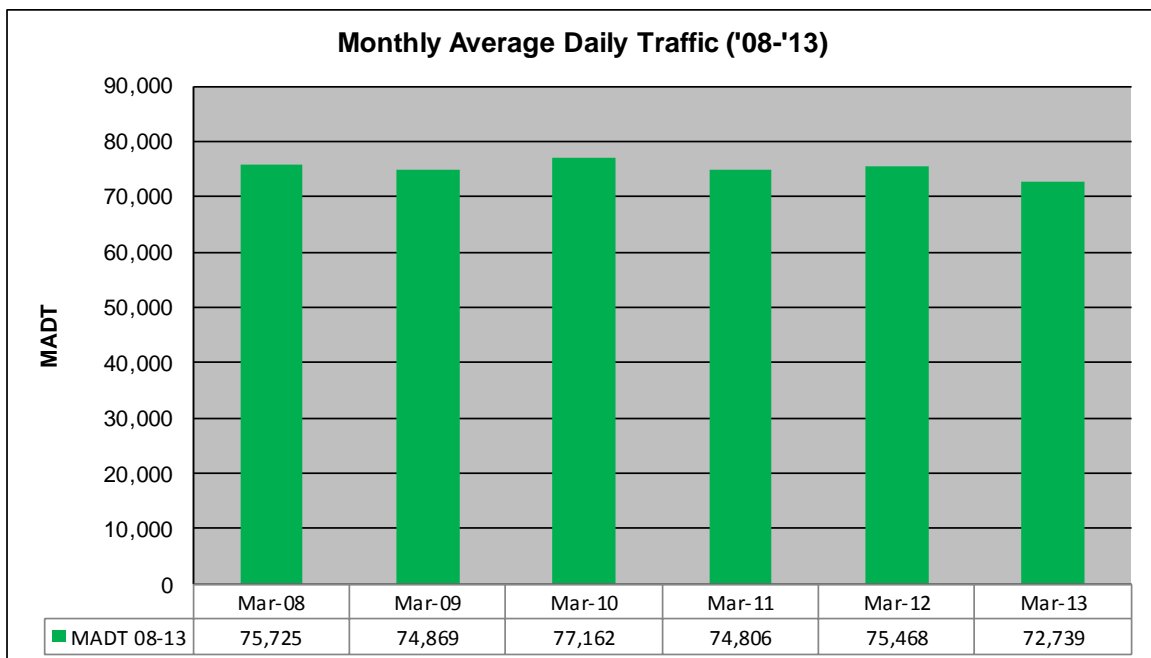
MONTHLY REPORT, STATION NO. 336 (ATR)

MARCH 2013

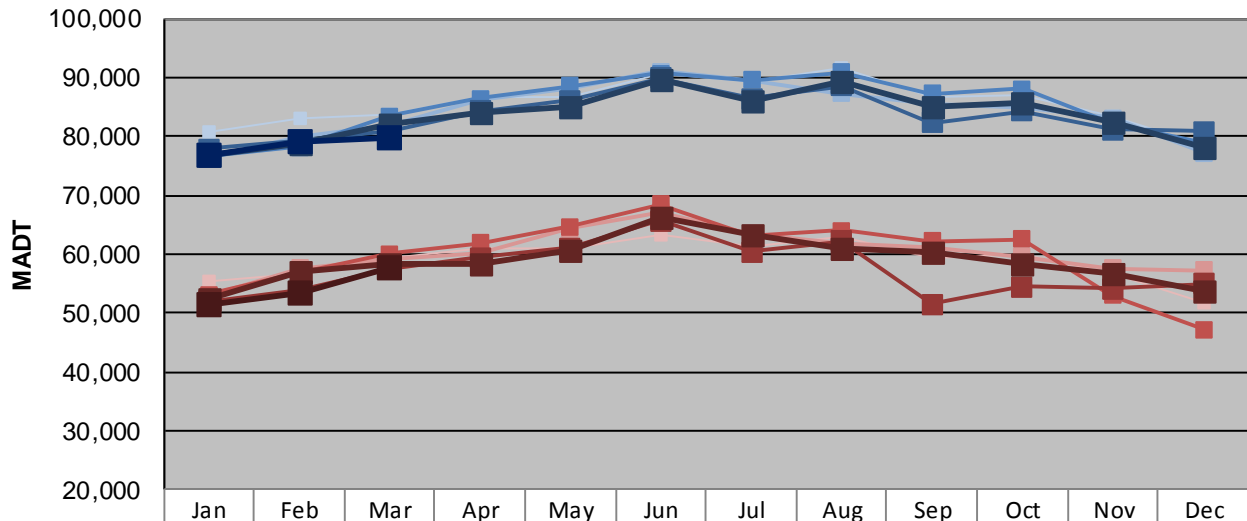
Station Measurement: VOLUME		
Route: I-35E	Route Direction: N/S	Lanes: 6
County: Dakota		Closest City: Eagan
Functional Class: Urban Principal Arterial - Interstate		
Location: N OF MSAS102 (DEERWOOD DR) IN EAGAN		
Ref Post: 095+00.422	True Mile: 95.48	Sequence No. 9854
Volume: 2,254,903		MADT: 72,739
Weekday (M-F) MADT: 79,624		Weekend (Sa-Su) MADT: 57,634



Note: Decrease in traffic September/October 2011 due to construction on I-35E



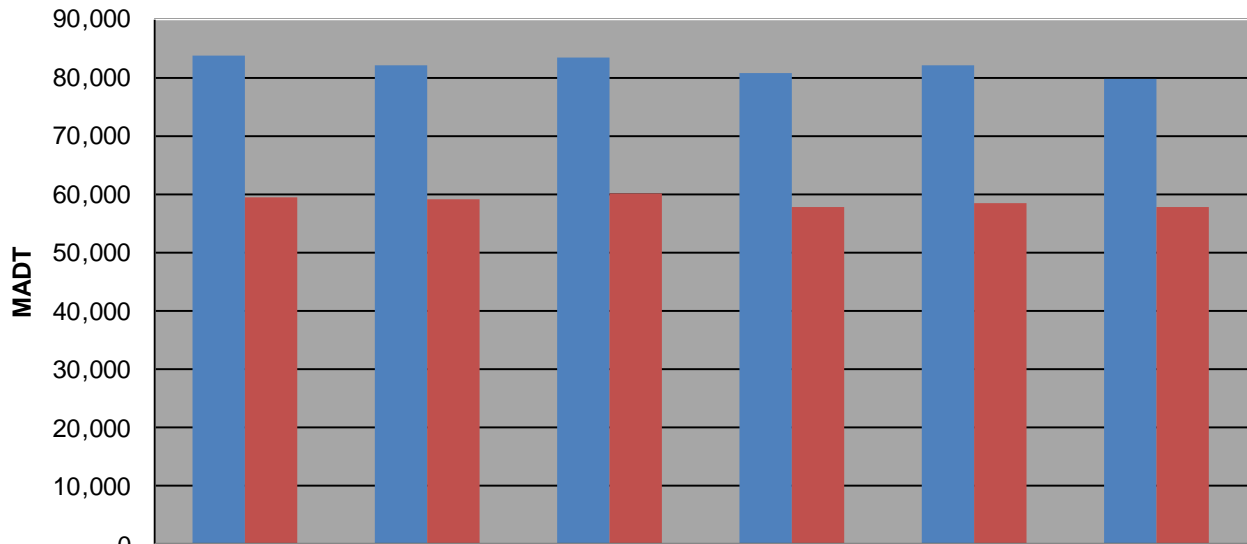
Weekday (WD)/Weekend (WE) Monthly Average Daily Traffic



	Jan	Feb	Mar	Apr	May	Jun	Jul	Aug	Sep	Oct	Nov	Dec
'08 WD	80,834	83,172	83,750	86,808	86,802	90,534	89,420	91,632	86,602	86,840	83,364	78,348
'08 WE	55,434	56,588	59,420	60,846	61,090	63,412	61,446	63,014	59,400	59,922	56,724	51,650
'09 WD	76,452	79,838	81,936	86,326	88,008	91,026	89,628	87,242	85,542	84,710	83,062	77,124
'09 WE	52,736	57,502	59,060	60,186	64,382	67,194	63,354	61,806	61,034	59,608	57,646	57,314
'10 WD	76,582	78,184	83,380	86,484	88,648	90,646	89,590	90,958	87,224	88,100	82,198	78,912
'10 WE	53,108	56,824	60,028	61,898	64,712	68,518	63,024	64,012	62,234	62,490	53,038	47,174
'11 WD	77,886	79,152	80,856	84,294	86,058	89,872	86,444	88,576	82,262	84,256	81,216	80,754
'11 WE	51,990	53,732	57,664	59,352	60,968	65,600	60,442	62,174	51,464	54,516	54,158	54,978
'12 WD	76,764	78,812	81,904	84,140	84,920	89,596	85,984	89,204	85,056	85,552	82,520	78,184
'12 WE	52,444	57,056	58,334	58,418	60,606	66,374	63,320	61,112	60,364	58,478	56,528	53,726
'13 WD	76,776	79,098	79,624									
'13 WE	51,538	53,446	57,634									

Note: 'Weekday' defined as Monday-Friday, 'Weekend' defined as Saturday-Sunday

Weekday/Weekend Monthly Average Daily Traffic ('08-'13)



	Mar-08	Mar-09	Mar-10	Mar-11	Mar-12	Mar-13
Weekday	83,750	81,936	83,380	80,856	81,904	79,624
Weekend	59,420	59,060	60,028	57,664	58,334	57,634