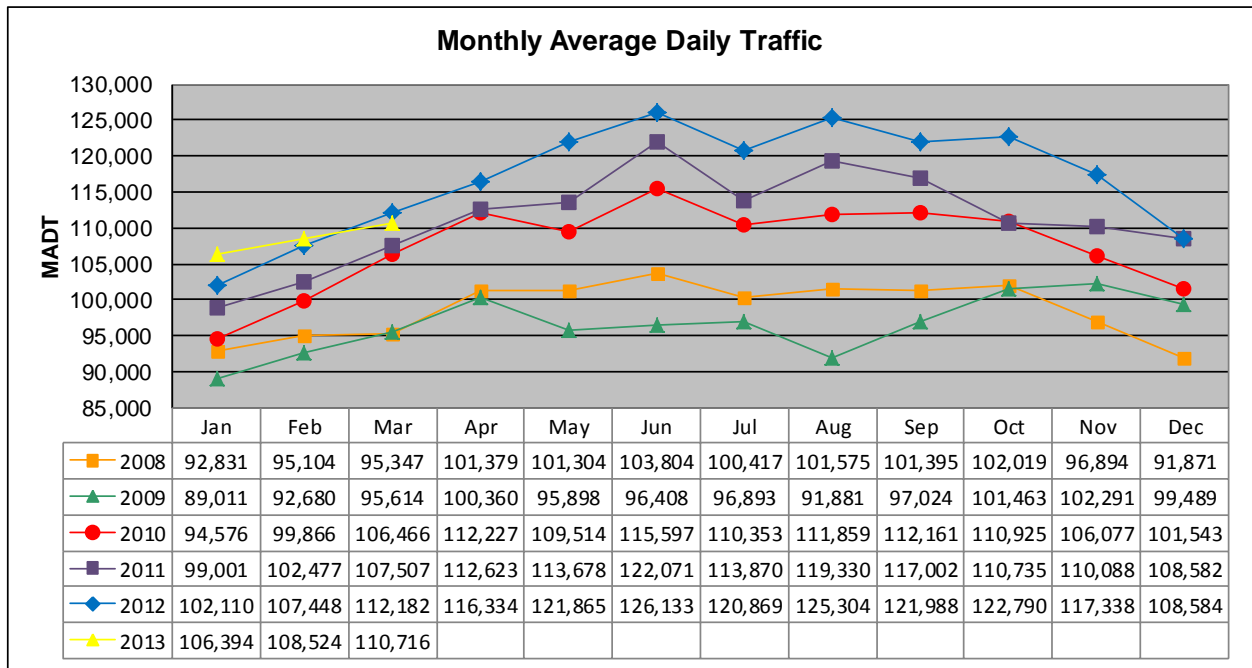


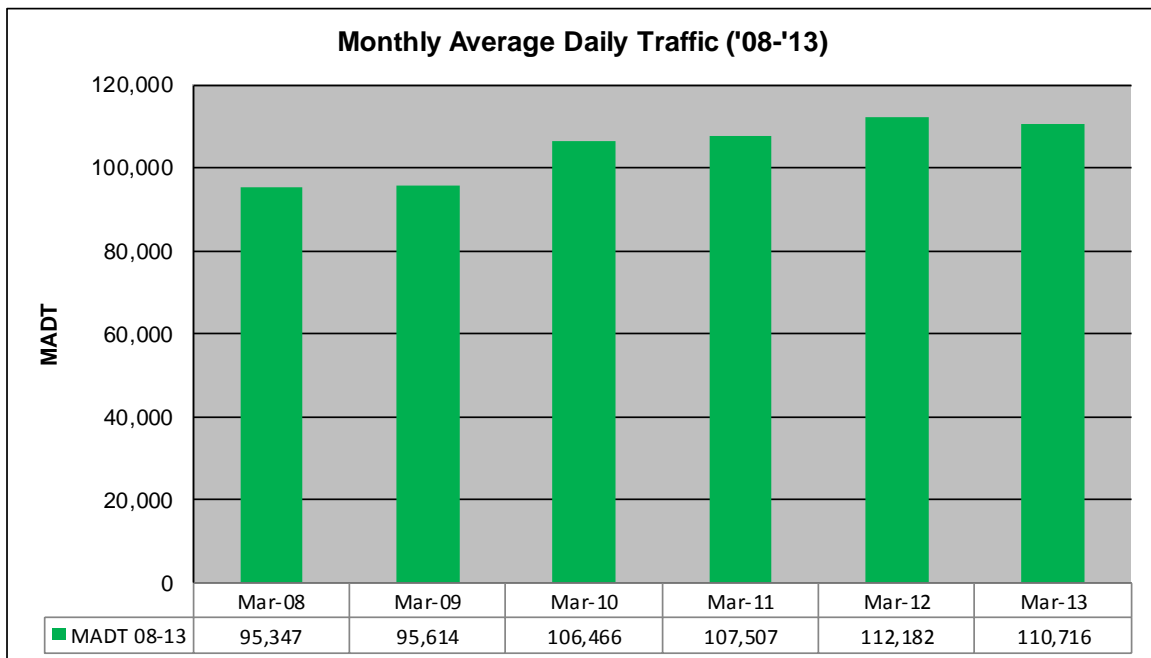
MONTHLY REPORT, STATION NO. 315 (ATR)

MARCH 2013

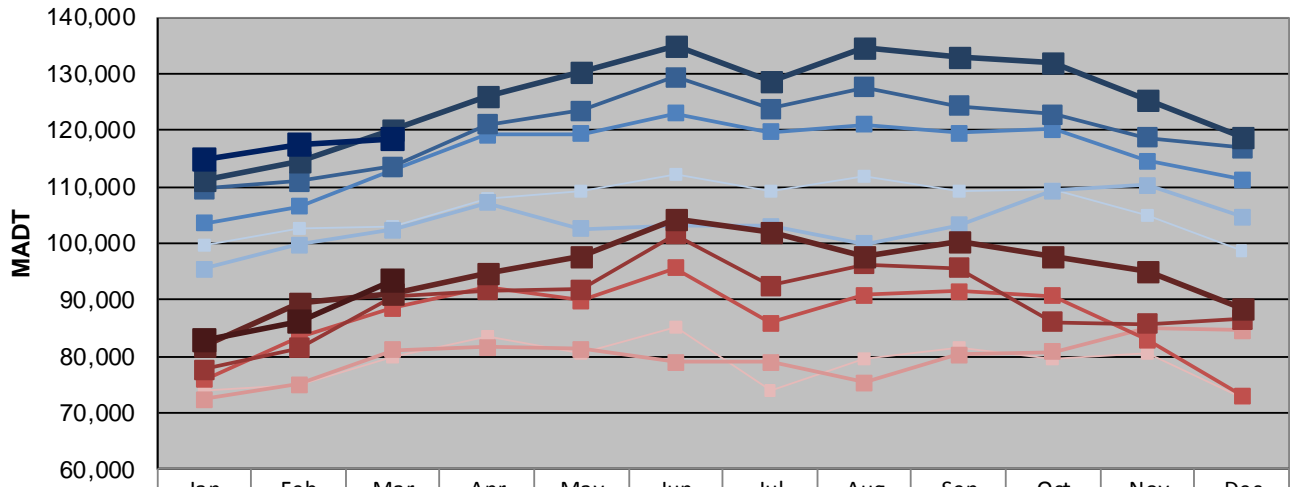
| | | |
|---|----------------------|-------------------------------------|
| Station Measurement: VOLUME | | |
| Route: I-35W | Route Direction: N/S | Lanes: 6 |
| County: Hennepin | | Closest City: Bloomington |
| Functional Class: Urban Principal Arterial - Interstate | | |
| Location: N OF MN RIVER BRIDGE IN BLOOMINGTON | | |
| Ref Post: 004+00.500 | True Mile: 4.55 | Sequence No. 9843 |
| Volume: 3,432,191 | | MADT: 110,716 |
| Weekday (M-F) MADT: 118,412 | | Weekend (Sa-Su) MADT: 93,540 |



Note: Decrease in traffic May to August 2009 due to construction on I-35W



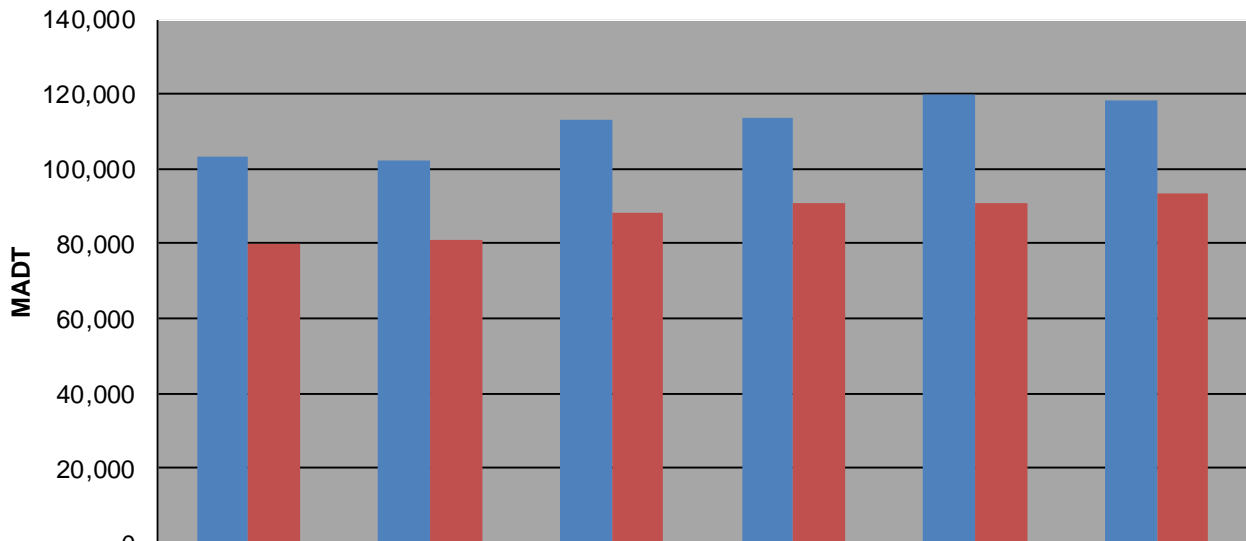
Weekday (WD)/Weekend (WE) Monthly Average Daily Traffic



| | Jan | Feb | Mar | Apr | May | Jun | Jul | Aug | Sep | Oct | Nov | Dec |
|--------|---------|---------|---------|---------|---------|---------|---------|---------|---------|---------|---------|---------|
| '08 WD | 99,552 | 102,488 | 103,056 | 107,868 | 109,176 | 112,192 | 109,210 | 111,864 | 109,182 | 109,492 | 105,014 | 98,614 |
| '08 WE | 74,048 | 74,822 | 79,864 | 83,422 | 80,436 | 85,278 | 73,942 | 79,616 | 81,550 | 79,454 | 80,654 | 72,714 |
| '09 WD | 95,418 | 99,748 | 102,414 | 107,178 | 102,488 | 102,964 | 102,964 | 99,850 | 103,118 | 109,238 | 110,228 | 104,644 |
| '09 WE | 72,390 | 75,010 | 81,048 | 81,512 | 81,318 | 78,912 | 78,912 | 75,312 | 80,248 | 80,834 | 85,096 | 84,508 |
| '10 WD | 103,556 | 106,480 | 113,056 | 119,210 | 119,410 | 122,926 | 119,624 | 121,010 | 119,460 | 120,228 | 114,604 | 111,318 |
| '10 WE | 75,854 | 83,336 | 88,476 | 92,062 | 89,838 | 95,628 | 85,830 | 90,874 | 91,420 | 90,622 | 82,914 | 73,084 |
| '11 WD | 109,596 | 110,914 | 113,540 | 121,030 | 123,434 | 129,472 | 123,728 | 127,650 | 124,220 | 122,732 | 118,674 | 116,900 |
| '11 WE | 77,608 | 81,360 | 90,632 | 91,696 | 91,868 | 101,462 | 92,470 | 96,312 | 95,542 | 86,052 | 85,794 | 86,552 |
| '12 WD | 111,306 | 114,452 | 120,104 | 126,114 | 130,234 | 134,840 | 128,810 | 134,654 | 132,908 | 131,874 | 125,456 | 118,666 |
| '12 WE | 81,834 | 89,460 | 90,948 | 94,732 | 97,526 | 104,268 | 101,802 | 97,532 | 100,148 | 97,580 | 94,898 | 88,498 |
| '13 WD | 114,730 | 117,442 | 118,412 | | | | | | | | | |
| '13 WE | 82,864 | 86,228 | 93,540 | | | | | | | | | |

Note: 'Weekday' defined as Monday-Friday, 'Weekend' defined as Saturday-Sunday

Weekday/Weekend Monthly Average Daily Traffic ('08-'13)



| | Mar-08 | Mar-09 | Mar-10 | Mar-11 | Mar-12 | Mar-13 |
|---------|---------|---------|---------|---------|---------|---------|
| Weekday | 103,056 | 102,414 | 113,056 | 113,540 | 120,104 | 118,412 |
| Weekend | 79,864 | 81,048 | 88,476 | 90,632 | 90,948 | 93,540 |