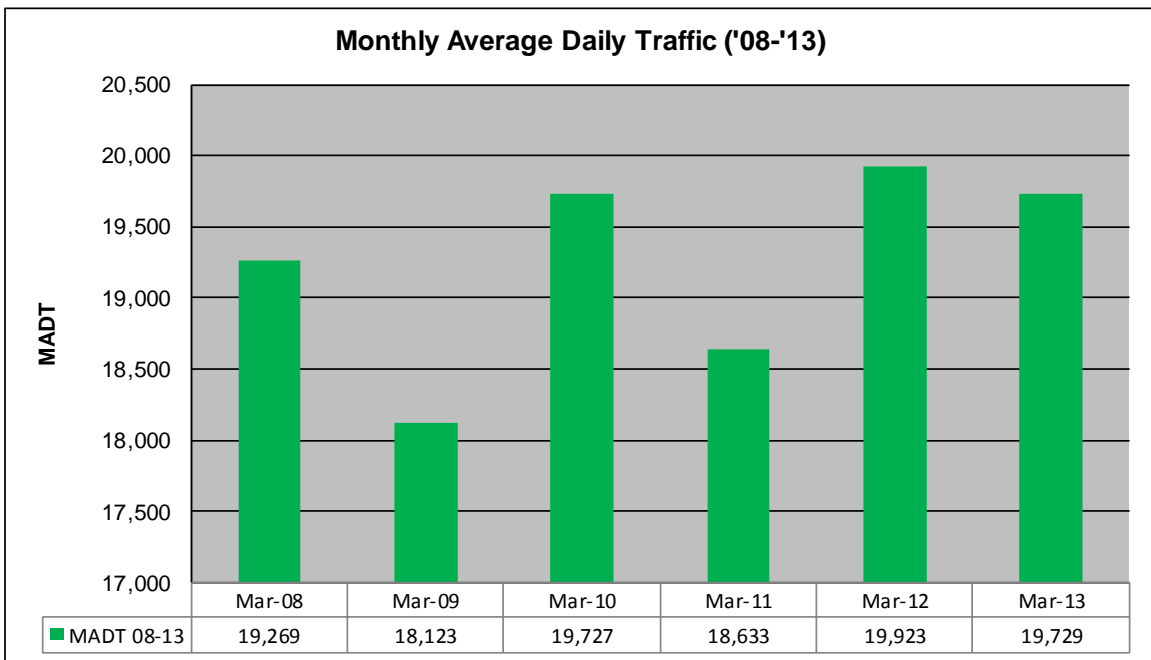
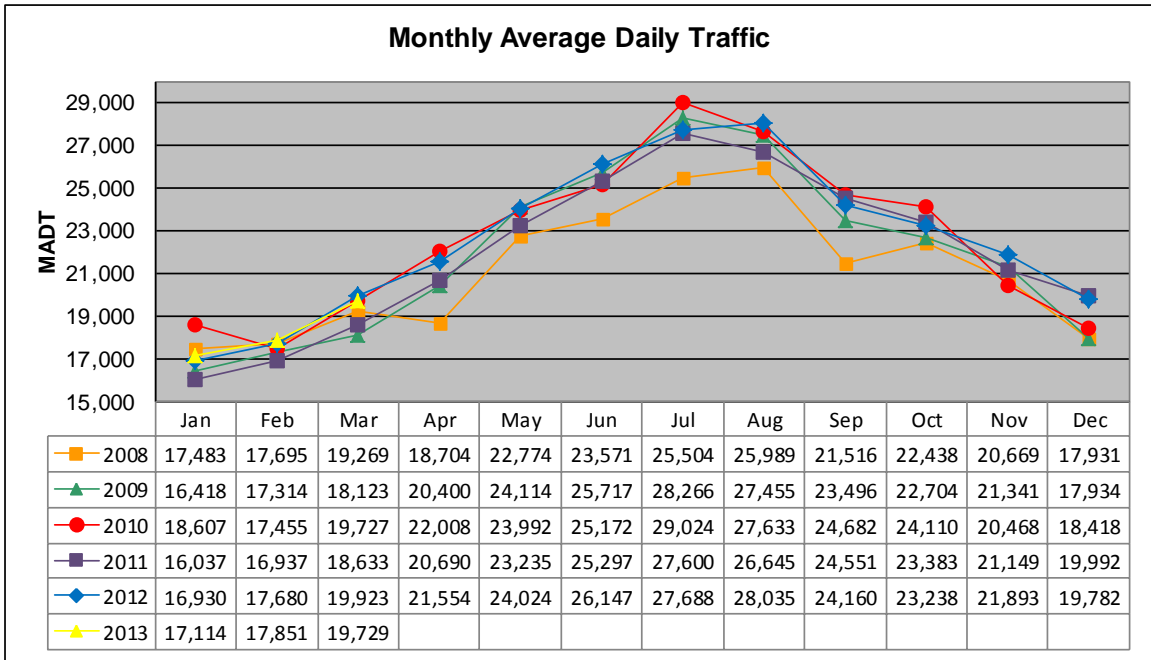


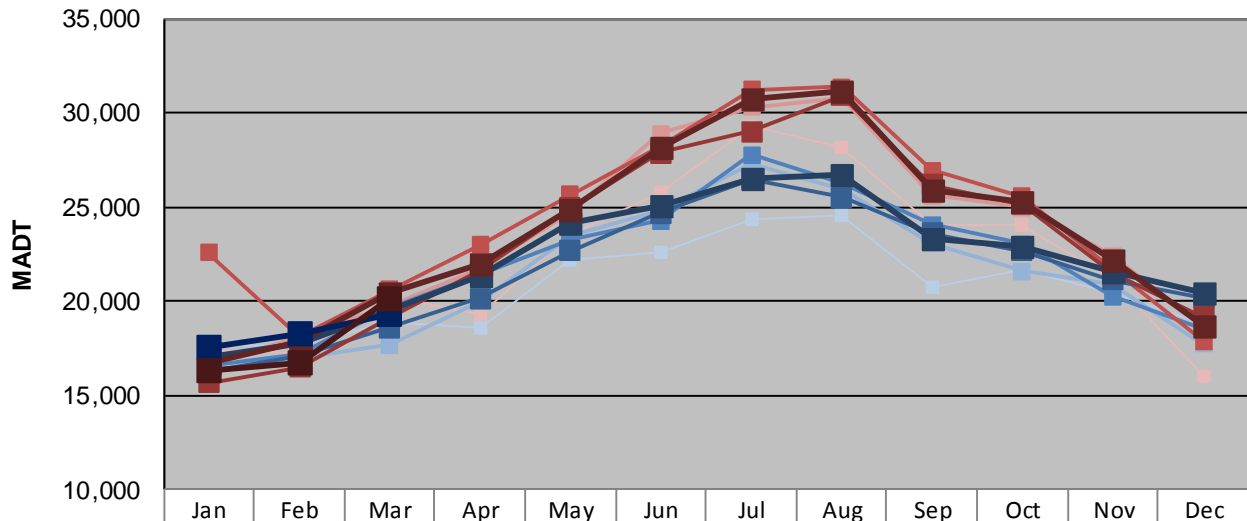
# MONTHLY REPORT, STATION NO. 175 (ATR)

## MARCH 2013

Station Measurement: VOLUME/SPEED/CLASS		
Route: I-94	Route Direction: E/W	Lanes: 4
County: Stearns		Closest City: Sauk Centre
Functional Class: Rural Principal Arterial - Interstate		
Location: E OF CR186, SE OF SAUK CENTRE		
Ref Post: 128+00.640	True Mile: 129	Sequence No. 6776
<b>Volume: 611,593</b>		<b>MADT: 19,729</b>
<b>Weekday (M-F) MADT: 19,320</b>		<b>Weekend (Sa-Su) MADT: 20,080</b>



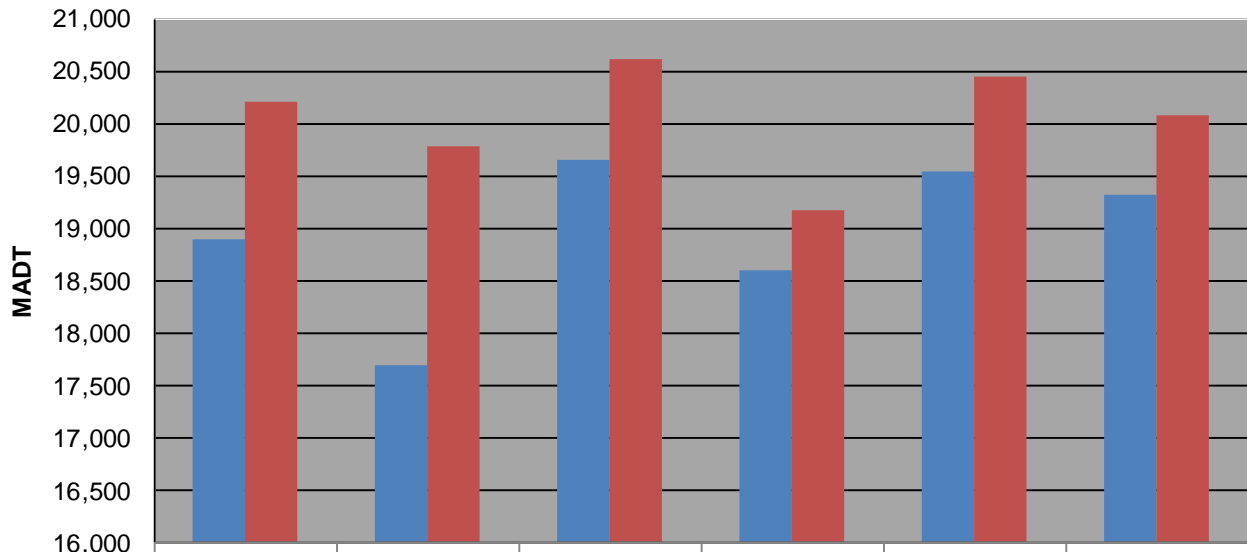
### Weekday (WD)/Weekend (WE) Monthly Average Daily Traffic



	Jan	Feb	Mar	Apr	May	Jun	Jul	Aug	Sep	Oct	Nov	Dec
'08 WD	17,632	17,640	18,892	18,612	22,220	22,590	24,322	24,596	20,758	21,634	20,424	18,778
'08 WE	17,468	17,230	20,202	19,334	23,544	25,804	29,318	28,140	23,996	24,006	21,158	16,004
'09 WD	16,250	16,990	17,690	19,996	23,470	24,812	27,292	25,962	23,082	21,596	20,886	17,716
'09 WE	16,608	18,124	19,782	21,722	24,748	28,900	30,282	30,802	25,590	24,972	22,414	18,636
'10 WD	16,558	17,176	19,654	21,360	23,278	24,294	27,794	26,204	24,058	23,038	20,232	18,514
'10 WE	22,574	18,154	20,616	22,978	25,660	28,222	31,238	31,362	26,966	25,576	21,692	17,896
'11 WD	16,268	17,098	18,604	20,144	22,674	24,682	26,496	25,512	23,592	22,670	21,126	20,210
'11 WE	15,682	16,506	19,172	21,600	24,946	27,886	29,012	30,902	26,176	25,134	21,466	19,162
'12 WD	17,052	17,750	19,542	21,332	24,098	25,038	26,492	26,704	23,316	22,876	21,600	20,452
'12 WE	16,686	17,850	20,448	21,946	24,838	28,190	30,716	31,094	25,850	25,272	22,150	18,670
'13 WD	17,496	18,296	19,320									
'13 WE	16,358	16,740	20,080									

Note: 'Weekday' defined as Monday-Friday, 'Weekend' defined as Saturday-Sunday

### Weekday/Weekend Monthly Average Daily Traffic ('08-'13)



	Mar-08	Mar-09	Mar-10	Mar-11	Mar-12	Mar-13
Weekday	18,892	17,690	19,654	18,604	19,542	19,320
Weekend	20,202	19,782	20,616	19,172	20,448	20,080