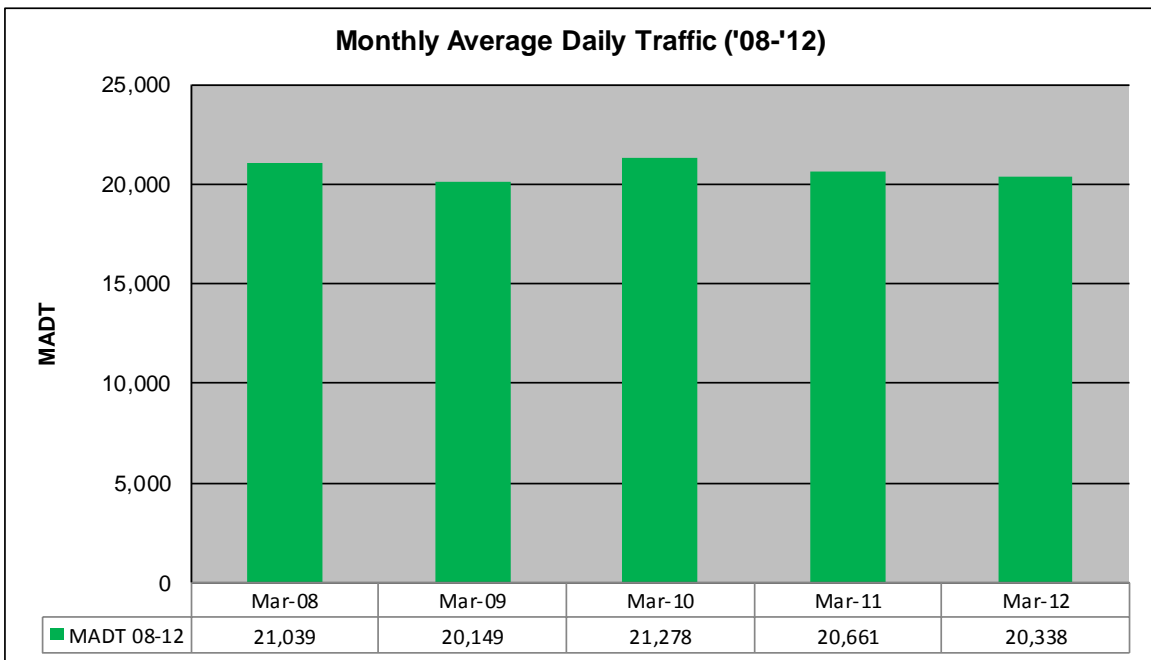
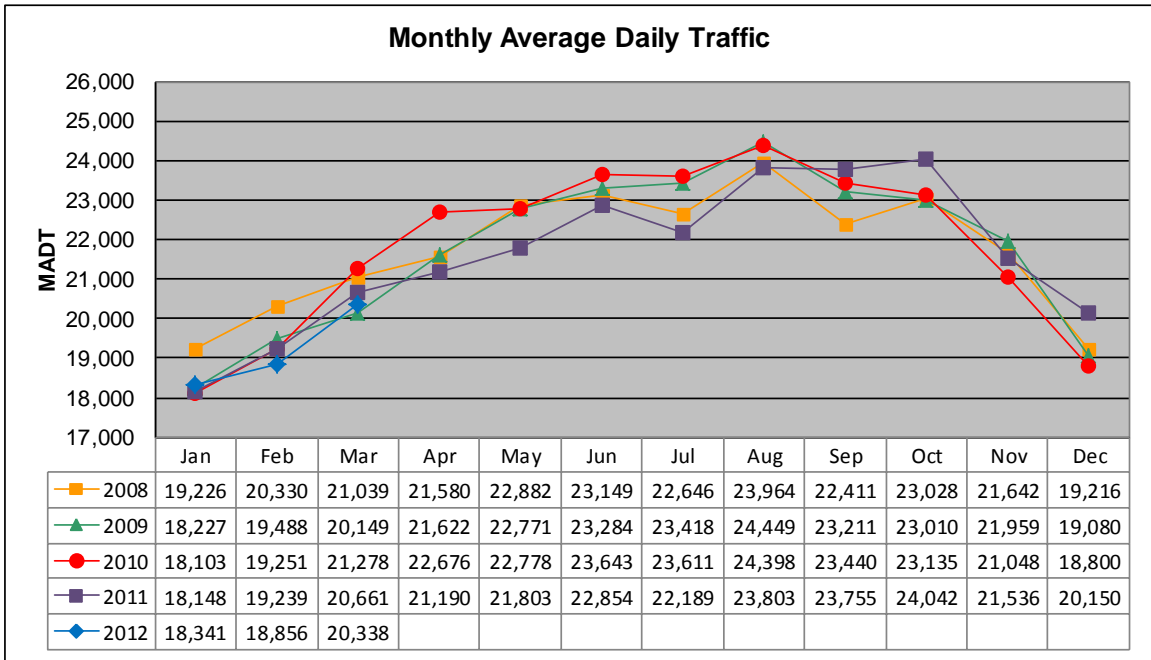


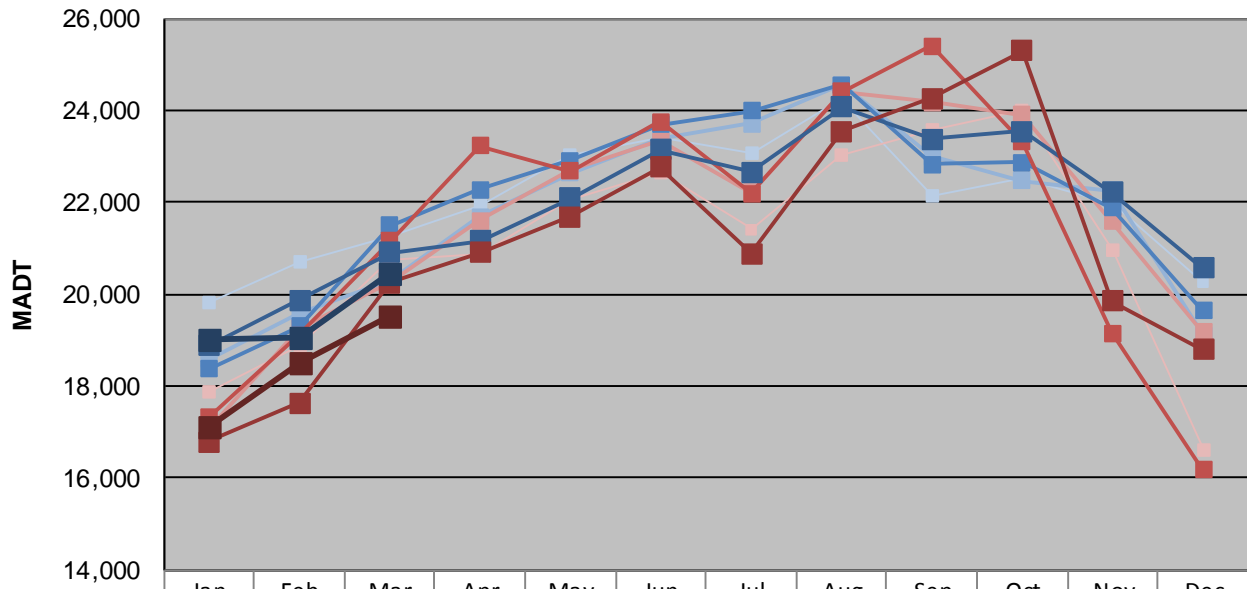
# MONTHLY REPORT, STATION NO. 353 (ATR)

## MARCH 2012

|  |                      |                                     |
|--|----------------------|-------------------------------------|
| Station Measurement: VOLUME/SPEED/CLASS            |                      |                                     |
| Route: TH 169                                      | Route Direction: N/S | Lanes: 4                            |
| County: Scott                                      | Closest City: Jordan |                                     |
| Functional Class: Rural Principal Arterial - Other |                      |                                     |
| Location: W OF CR59 (DELAWARE AVE), W OF JORDAN    |                      |                                     |
| Ref Post: 096+00.670                               | True Mile: 96.198    | Sequence No. 6788                   |
| <b>Volume: 630,468</b>                             |                      | <b>MADT: 20,338</b>                 |
| <b>Weekday (M-F) MADT: 19,506</b>                  |                      | <b>Weekend (Sa-Su) MADT: 19,506</b> |



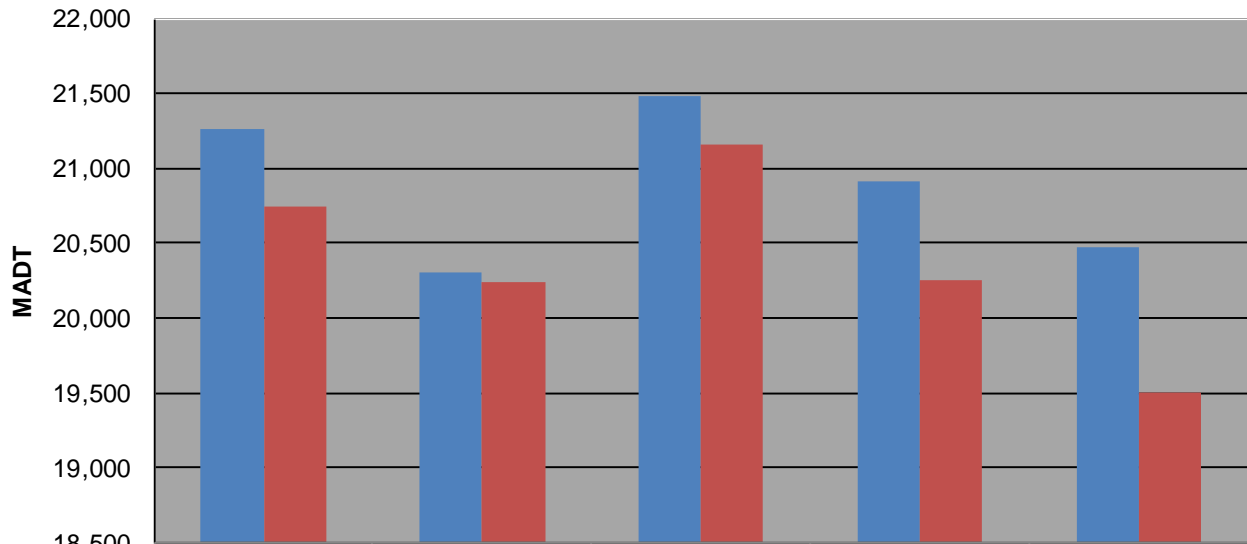
### Weekday (WD)/Weekend (WE) Monthly Average Daily Traffic



|        | Jan    | Feb    | Mar    | Apr    | May    | Jun    | Jul    | Aug    | Sep    | Oct    | Nov    | Dec    |
|--------|--------|--------|--------|--------|--------|--------|--------|--------|--------|--------|--------|--------|
| '08 WD | 19,808 | 20,686 | 21,258 | 21,932 | 23,026 | 23,416 | 23,076 | 24,254 | 22,120 | 22,528 | 21,984 | 20,252 |
| '08 WE | 17,858 | 18,900 | 20,750 | 20,870 | 22,066 | 22,630 | 21,414 | 23,032 | 23,580 | 24,010 | 20,958 | 16,604 |
| '09 WD | 18,574 | 19,578 | 20,306 | 21,688 | 22,640 | 23,406 | 23,704 | 24,552 | 23,000 | 22,468 | 22,246 | 19,112 |
| '09 WE | 17,072 | 19,262 | 20,246 | 21,602 | 22,704 | 23,340 | 22,224 | 24,412 | 24,178 | 23,906 | 21,586 | 19,164 |
| '10 WD | 18,380 | 19,306 | 21,488 | 22,276 | 22,900 | 23,698 | 23,986 | 24,562 | 22,818 | 22,864 | 21,874 | 19,638 |
| '10 WE | 17,314 | 19,112 | 21,166 | 23,236 | 22,674 | 23,752 | 22,198 | 24,408 | 25,394 | 23,304 | 19,156 | 16,182 |
| '11 WD | 18,884 | 19,872 | 20,910 | 21,160 | 22,079 | 23,150 | 22,660 | 24,066 | 23,374 | 23,550 | 22,222 | 20,572 |
| '11 WE | 16,794 | 17,626 | 20,250 | 20,914 | 21,678 | 22,770 | 20,890 | 23,552 | 24,264 | 25,290 | 19,846 | 18,798 |
| '12 WD | 19,012 | 19,060 | 20,472 |        |        |        |        |        |        |        |        |        |
| '12 WE | 17,114 | 18,524 | 19,506 |        |        |        |        |        |        |        |        |        |

Note: 'Weekday' defined as Monday-Friday, 'Weekend' defined as Saturday-Sunday

### Weekday/Weekend Monthly Average Daily Traffic ('08-'12)



|         | Mar-08 | Mar-09 | Mar-10 | Mar-11 | Mar-12 |
|---------|--------|--------|--------|--------|--------|
| Weekday | 21,258 | 20,306 | 21,488 | 20,910 | 20,472 |
| Weekend | 20,750 | 20,246 | 21,166 | 20,250 | 19,506 |