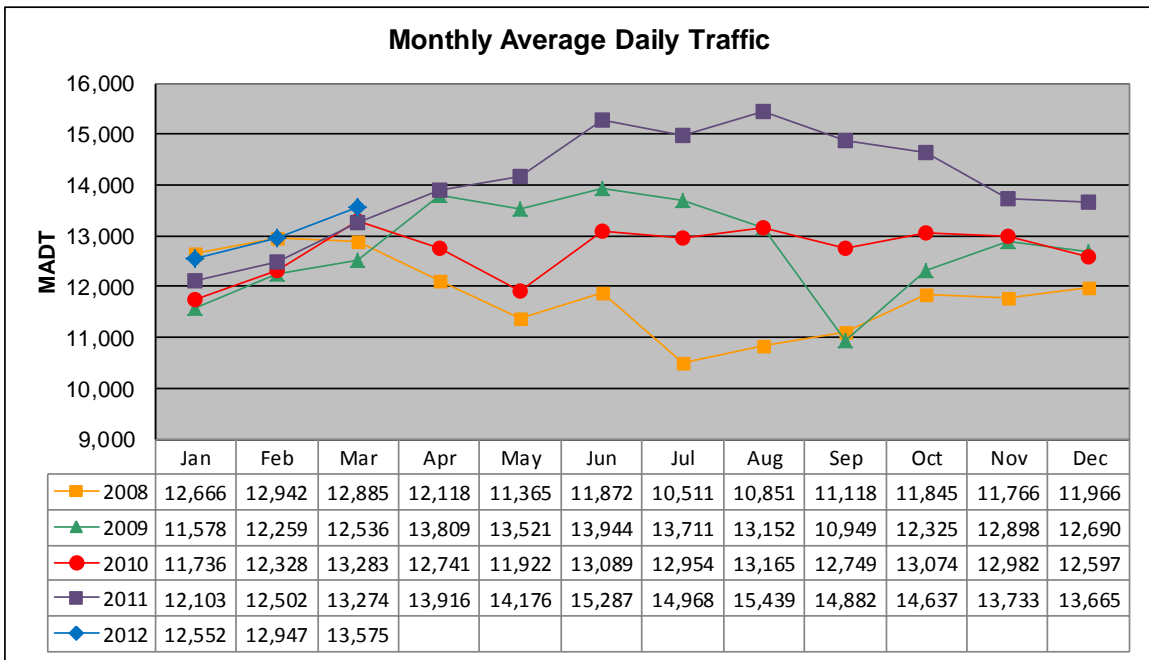


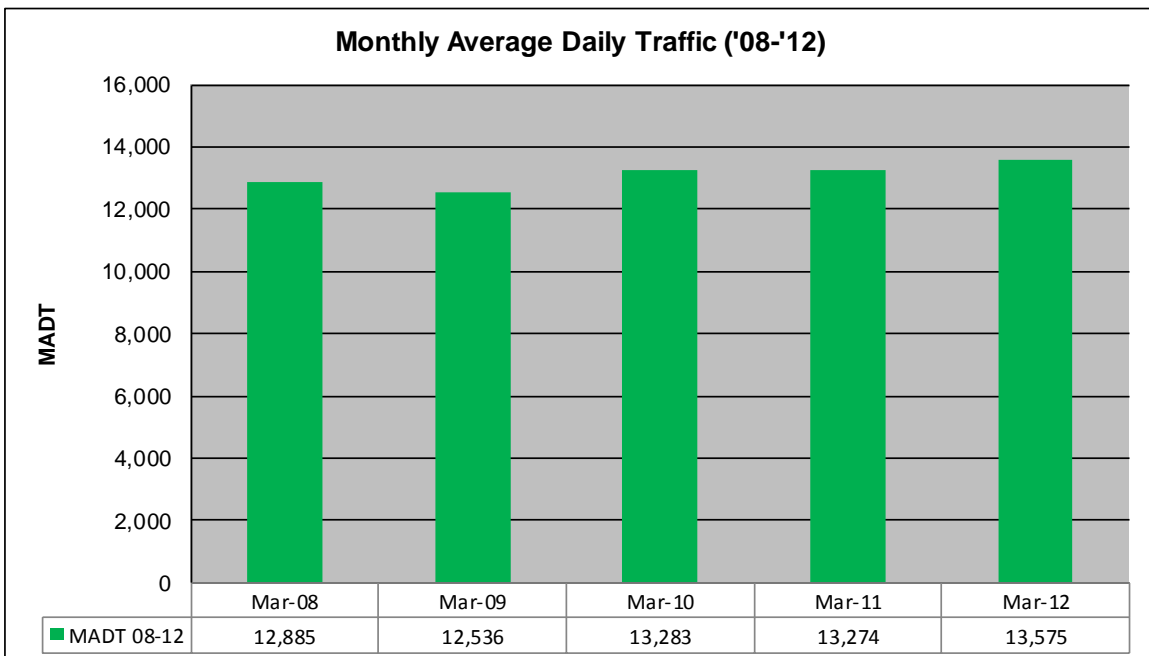
MONTHLY REPORT, STATION NO. 351 (ATR)

MARCH 2012

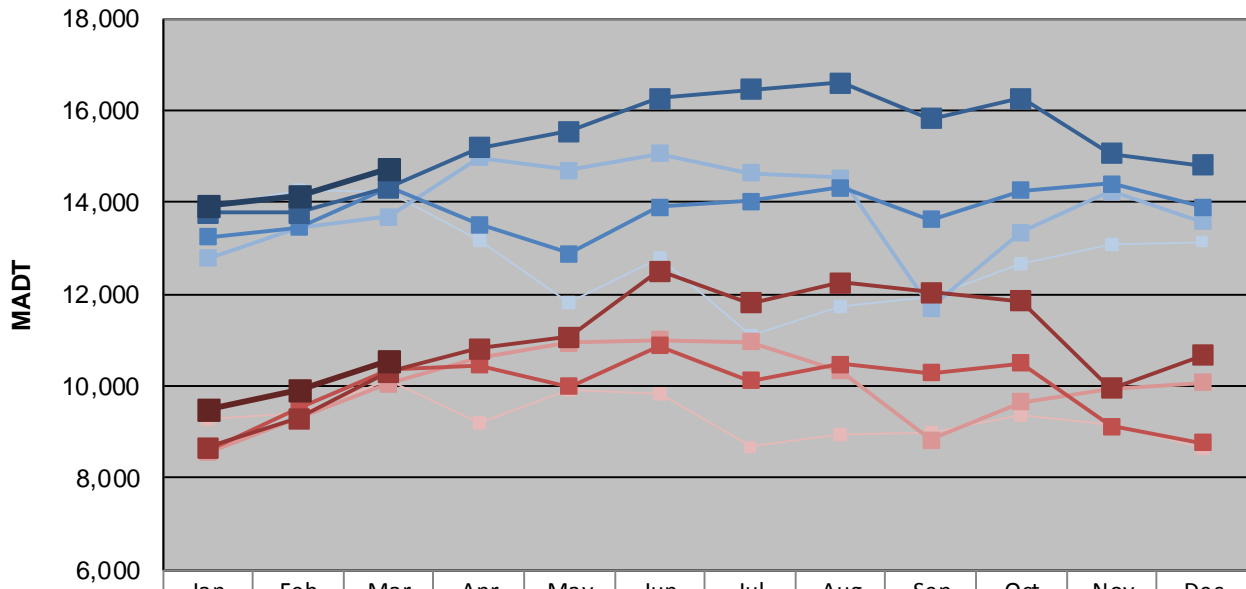
| | | |
|----------------------------------------------------|----------------------|-------------------------------------|
| Station Measurement: VOLUME | | |
| Route: TH 12 | Route Direction: E/W | Lanes: 2 |
| County: Hennepin | | Closest City: Independence |
| Functional Class: Rural Principal Arterial - Other | | |
| Location: W OF CSAH92 IN INDEPENDENCE | | |
| Ref Post: 142+00.839 | True Mile: 142.285 | Sequence No. 6789 |
| Volume: 420,814 | | MADT: 13,575 |
| Weekday (M-F) MADT: 14,722 | | Weekend (Sa-Su) MADT: 10,562 |



Note: Decrease in traffic April to November 2008, September/October 2009, and April/May 2010 due to construction on TH 12



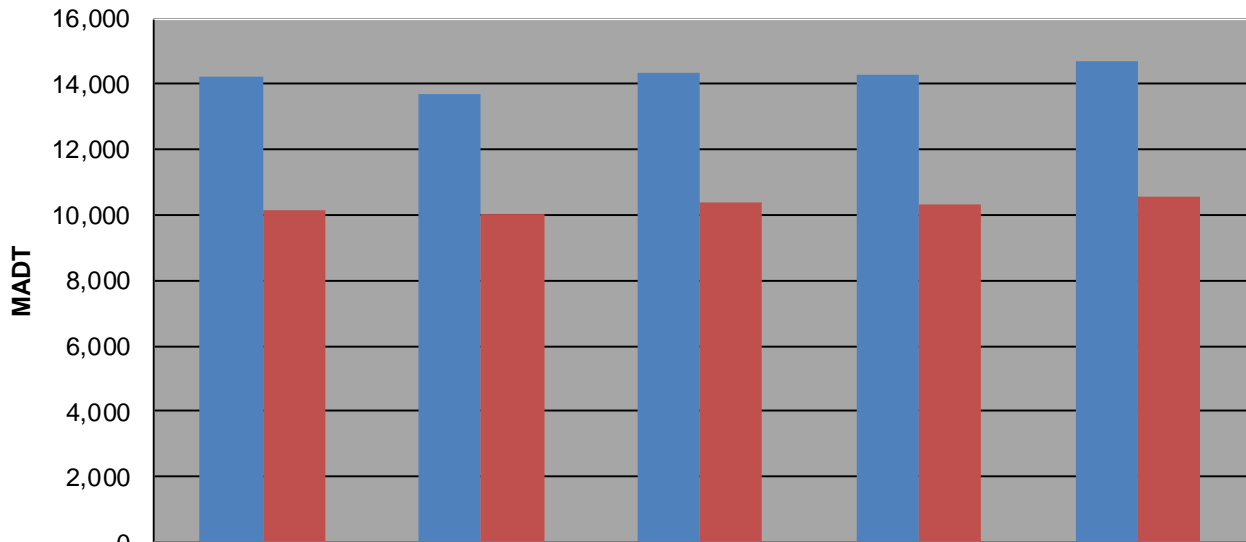
Weekday (WD)/Weekend (WE) Monthly Average Daily Traffic



| | Jan | Feb | Mar | Apr | May | Jun | Jul | Aug | Sep | Oct | Nov | Dec |
|--------|--------|--------|--------|--------|--------|--------|--------|--------|--------|--------|--------|--------|
| '08 WD | 13,884 | 14,246 | 14,230 | 13,172 | 11,830 | 12,786 | 11,114 | 11,740 | 11,946 | 12,650 | 13,076 | 13,138 |
| '08 WE | 9,266 | 9,416 | 10,144 | 9,218 | 9,932 | 9,850 | 8,684 | 8,932 | 8,992 | 9,390 | 9,148 | 8,648 |
| '09 WD | 12,780 | 13,446 | 13,676 | 14,968 | 14,702 | 15,056 | 14,630 | 14,526 | 11,694 | 13,354 | 14,244 | 13,582 |
| '09 WE | 8,564 | 9,292 | 10,046 | 10,600 | 10,936 | 11,004 | 10,960 | 10,326 | 8,834 | 9,664 | 9,952 | 10,078 |
| '10 WD | 13,250 | 13,450 | 14,334 | 13,520 | 12,890 | 13,904 | 14,032 | 14,328 | 13,614 | 14,246 | 14,394 | 13,906 |
| '10 WE | 8,602 | 9,524 | 10,366 | 10,458 | 10,000 | 10,876 | 10,120 | 10,480 | 10,298 | 10,498 | 9,124 | 8,768 |
| '11 WD | 13,772 | 13,776 | 14,314 | 15,176 | 15,548 | 16,272 | 16,442 | 16,590 | 15,824 | 16,254 | 15,066 | 14,802 |
| '11 WE | 8,672 | 9,292 | 10,308 | 10,820 | 11,076 | 12,496 | 11,798 | 12,242 | 12,048 | 11,852 | 9,960 | 10,676 |
| '12 WD | 13,918 | 14,138 | 14,722 | | | | | | | | | |
| '12 WE | 9,498 | 9,934 | 10,562 | | | | | | | | | |

Note: 'Weekday' defined as Monday-Friday, 'Weekend' defined as Saturday-Sunday

Weekday/Weekend Monthly Average Daily Traffic ('08-'12)



| | Mar-08 | Mar-09 | Mar-10 | Mar-11 | Mar-12 |
|---------|--------|--------|--------|--------|--------|
| Weekday | 14,230 | 13,676 | 14,334 | 14,314 | 14,722 |
| Weekend | 10,144 | 10,046 | 10,366 | 10,308 | 10,562 |