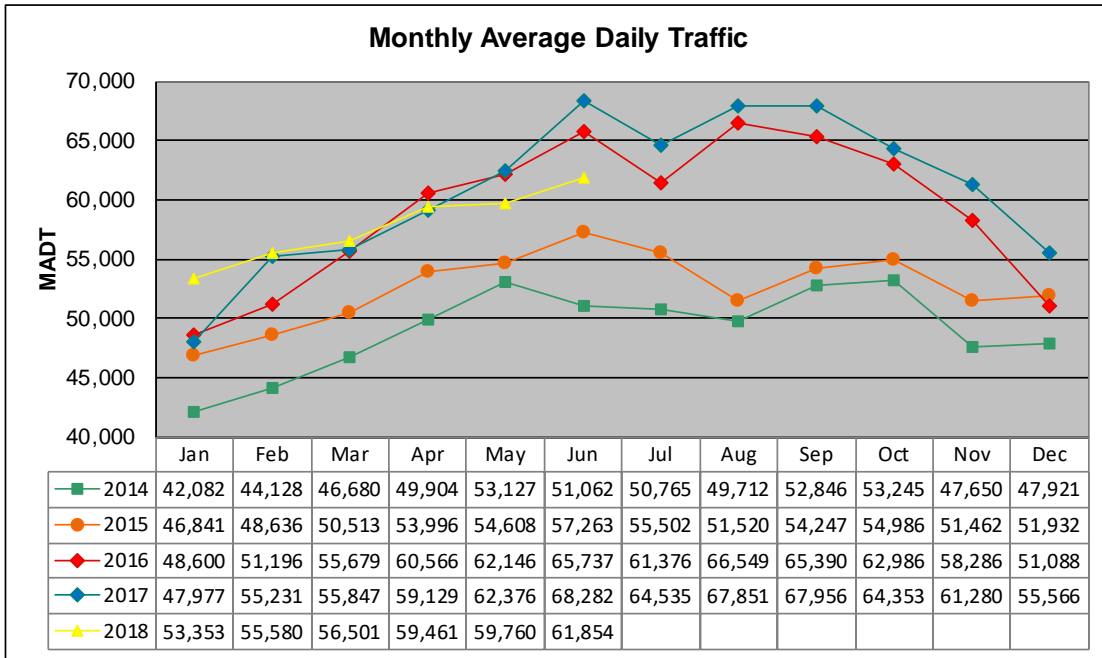


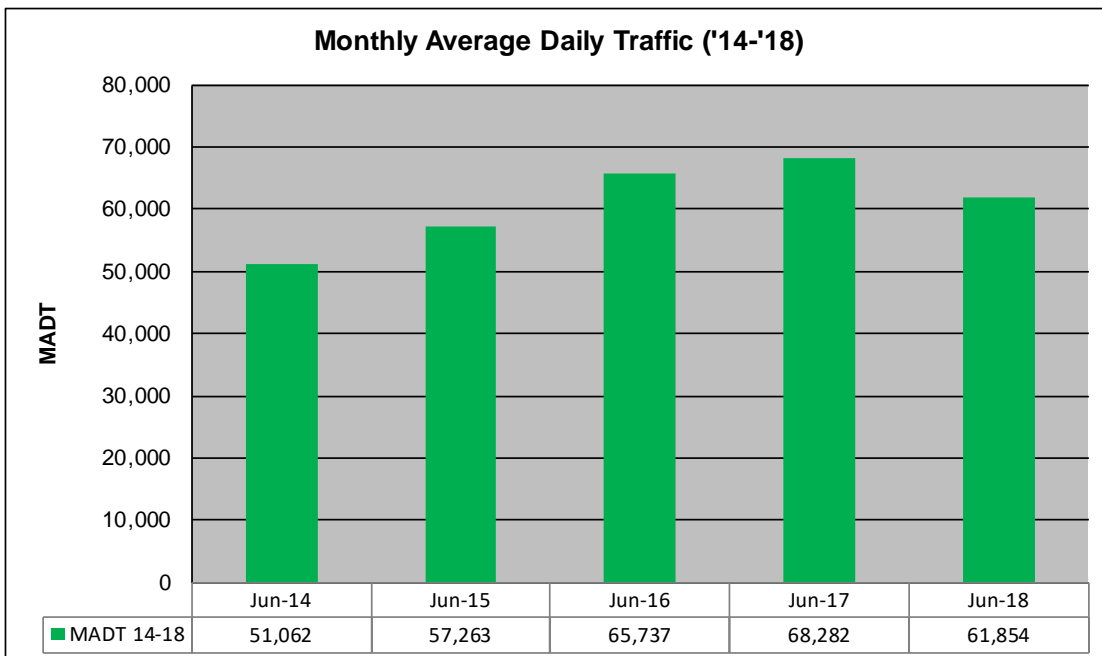
MONTHLY REPORT, STATION NO. 40 (WIM)

JUNE 2018

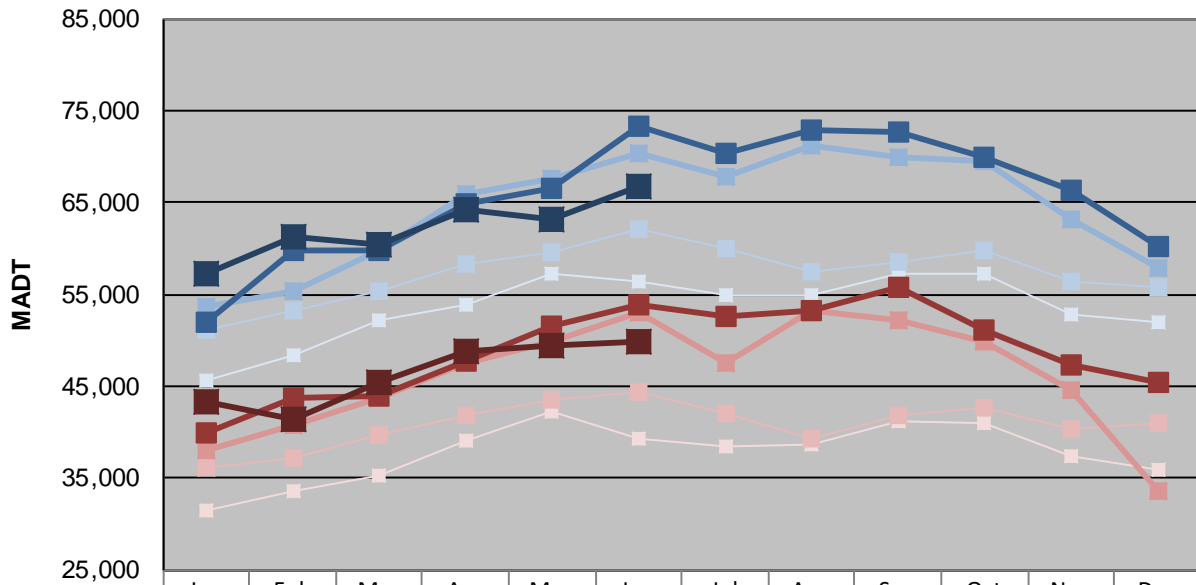
Station Measurement: VOLUME/SPEED/CLASS/WEIGHT		
Route: TH 52	Route Direction: N/S	Lanes: 4
County: Dakota		Closest City: West St Paul
Functional Class: Urban Principal Arterial - Other Freeways or Expressways		
Location: .5 MI N OF CSAH14 (SOUTHVIEW BLVD) IN W ST PAUL		
Ref Post: 126+00.677	True Mile: 127.015	Sequence No. 11537
Volume: 1,855,619		MADT: 61,854
Weekday (M-F) MADT: 66,754		Weekend (Sa-Su) MADT: 49,888



Note: Increase in traffic beginning in April 2016 due to the completion of the Lafayette Bridge project (2011-2015)



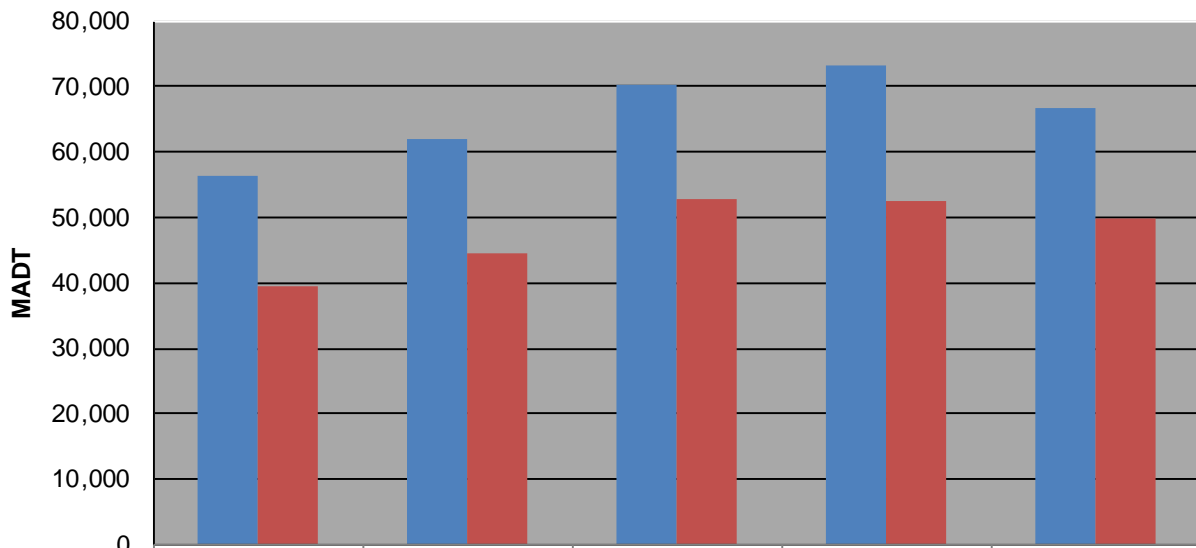
Weekday (WD)/Weekend (WE) Monthly Average Daily Traffic



	Jan	Feb	Mar	Apr	May	Jun	Jul	Aug	Sep	Oct	Nov	Dec
'14 WD	45,576	48,298	52,216	53,836	57,260	56,342	54,852	54,944	57,300	57,324	52,784	52,062
'14 WE	31,400	33,706	35,242	39,026	42,190	39,368	38,484	38,654	41,304	41,086	37,382	35,980
'15 WD	51,080	53,176	55,280	58,334	59,668	62,048	60,024	57,418	58,620	59,742	56,372	55,690
'15 WE	36,142	37,288	39,764	41,938	43,602	44,436	42,152	39,302	41,942	42,686	40,392	41,006
'16 WD	53,642	55,300	59,820	65,864	67,552	70,324	67,858	71,262	69,888	69,400	63,224	57,806
'16 WE	38,078	40,726	43,752	47,496	49,960	52,938	47,442	53,308	52,168	49,814	44,490	33,696
'17 WD	51,902	59,790	59,746	64,782	66,472	73,358	70,340	72,922	72,736	70,024	66,342	60,188
'17 WE	39,898	43,834	43,904	47,822	51,464	53,870	52,588	53,292	55,786	51,192	47,240	45,432
'18 WD	57,166	61,216	60,422	64,318	63,194	66,754						
'18 WE	43,266	41,490	45,434	48,776	49,360	49,888						

Note: 'Weekday' defined as Monday-Friday, 'Weekend' defined as Saturday-Sunday

Weekday/Weekend Monthly Average Daily Traffic ('14-'18)



	Jun-14	Jun-15	Jun-16	Jun-17	Jun-18
Weekday	56,342	62,048	70,324	73,358	66,754
Weekend	39,368	44,436	52,938	52,588	49,888