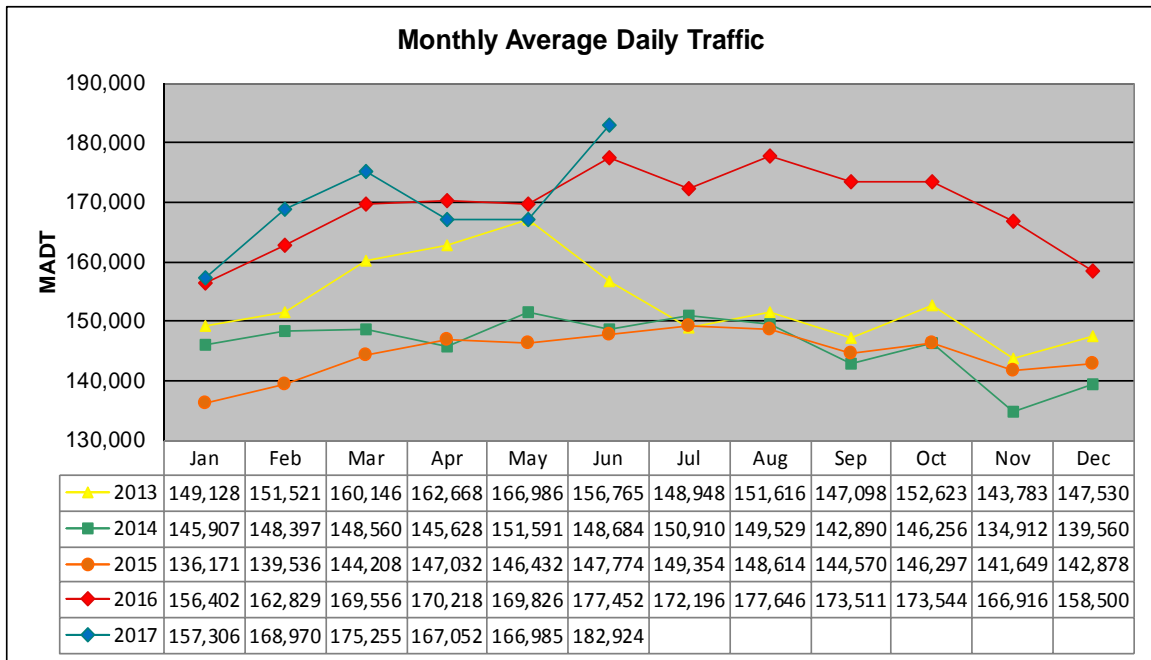


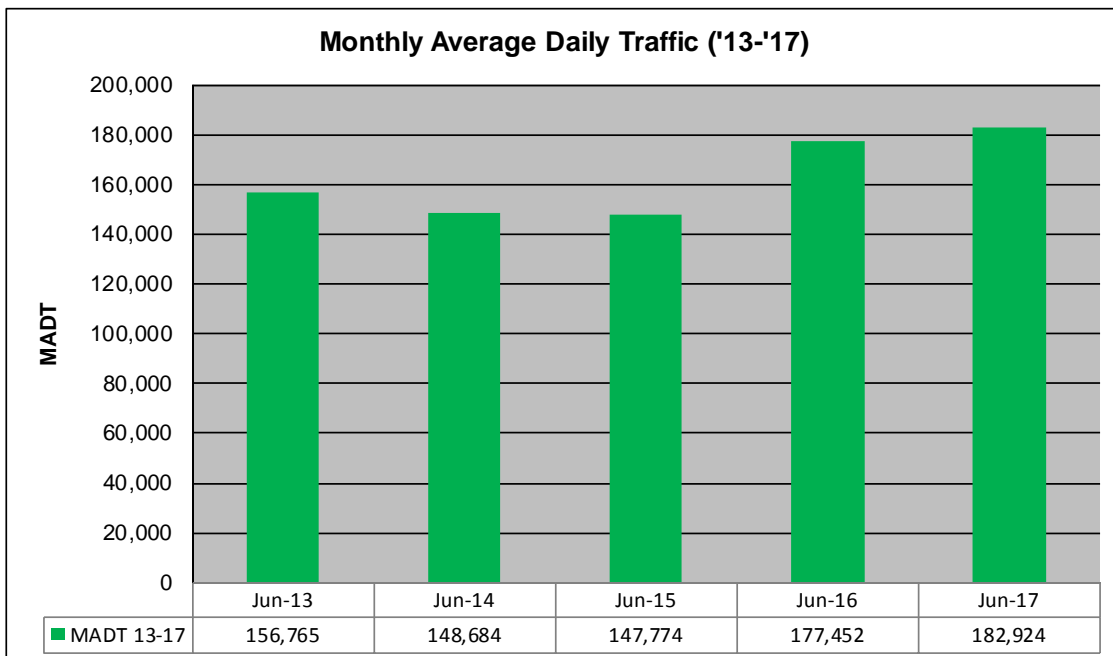
MONTHLY REPORT, STATION NO. 321 (ATR)

JUNE 2017

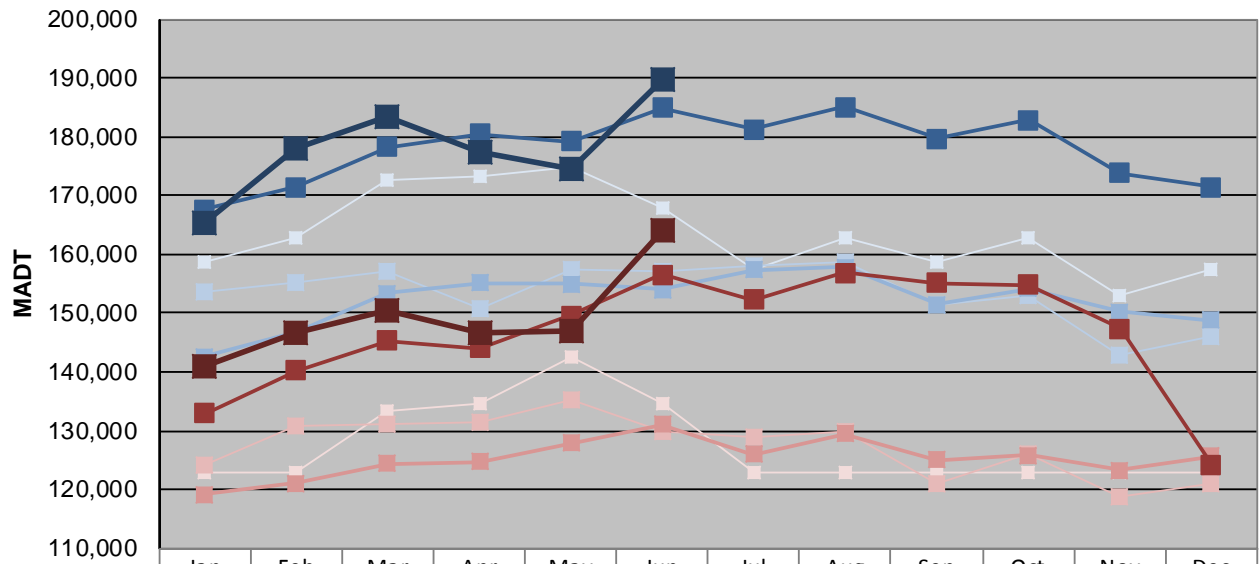
Station Measurement: VOLUME		
Route: I-494	Route Direction: E/W	Lanes: 6
County: Hennepin		Closest City: Bloomington
Functional Class: Urban Principal Arterial - Interstate		
Location: W OF I-35W IN BLOOMINGTON		
Ref Post: 005+00.600	True Mile: 5.605	Sequence No. 9846
Volume: 5,487,721		MADT: 182,924
Weekday (M-F) MADT: 189,594		Weekend (Sa-Su) MADT: 163,988



Note: Decrease in traffic June to November 2013, March to July 2014, and April/May 2017 due to construction on I-494



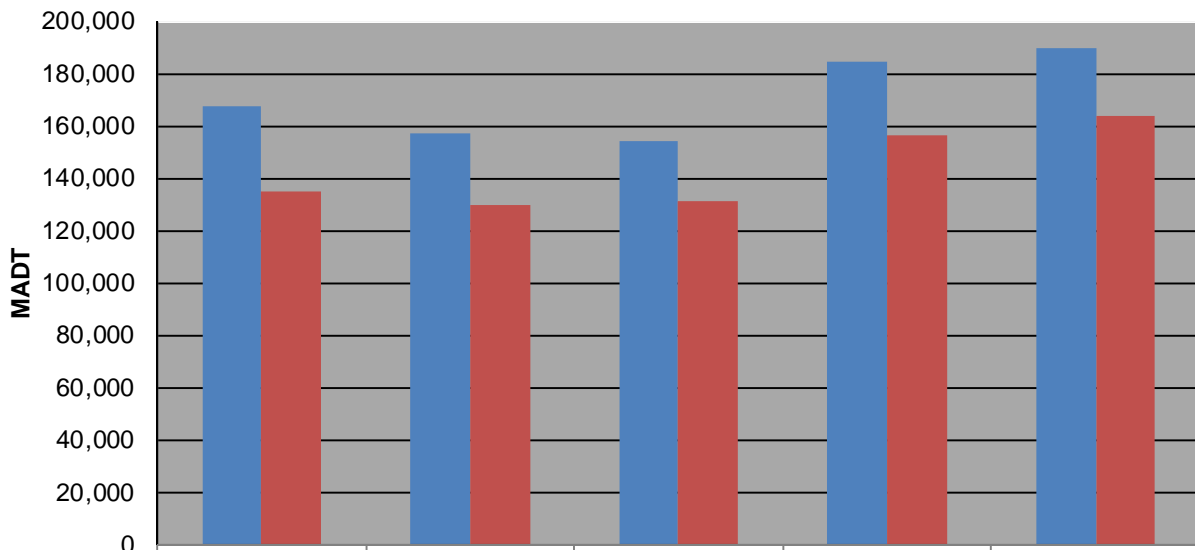
Weekday (WD)/Weekend (WE) Monthly Average Daily Traffic



	Jan	Feb	Mar	Apr	May	Jun	Jul	Aug	Sep	Oct	Nov	Dec
'13 WD	158,596	162,928	172,606	173,150	174,940	167,750	157,370	162,928	158,590	162,928	152,930	157,452
'13 WE	123,002	123,002	133,422	134,622	142,516	134,794	123,002	123,002	123,002	123,002	123,002	123,002
'14 WD	153,772	155,366	157,114	150,698	157,518	157,182	158,004	158,658	151,282	153,008	142,990	145,902
'14 WE	124,042	130,980	131,212	131,582	135,246	129,864	128,838	129,966	121,138	126,226	118,760	121,108
'15 WD	142,686	146,918	153,428	155,110	154,924	154,052	157,350	157,822	151,492	154,150	150,290	148,780
'15 WE	119,220	121,084	124,412	124,800	127,984	131,062	126,002	129,504	125,086	125,792	123,292	125,714
'16 WD	167,638	171,522	178,226	180,398	179,140	184,870	181,322	185,042	179,680	182,784	173,900	171,456
'16 WE	133,004	140,180	145,256	144,076	149,606	156,592	152,218	156,816	155,140	154,868	147,376	124,202
'17 WD	165,450	177,900	183,554	177,232	174,408	189,594						
'17 WE	140,842	146,646	150,342	146,694	147,054	163,988						

Note: 'Weekday' defined as Monday-Friday, 'Weekend' defined as Saturday-Sunday

Weekday/Weekend Monthly Average Daily Traffic ('13-'17)



	Jun-13	Jun-14	Jun-15	Jun-16	Jun-17
Weekday	167,750	157,182	154,052	184,870	189,594
Weekend	134,794	129,864	131,062	156,592	163,988