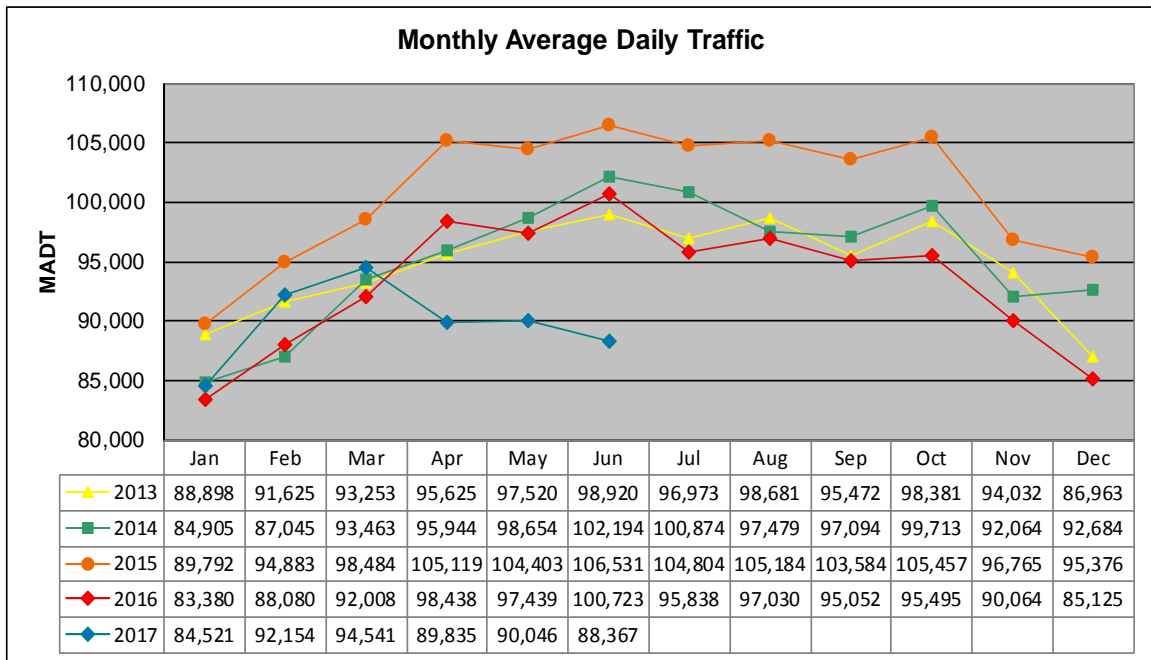


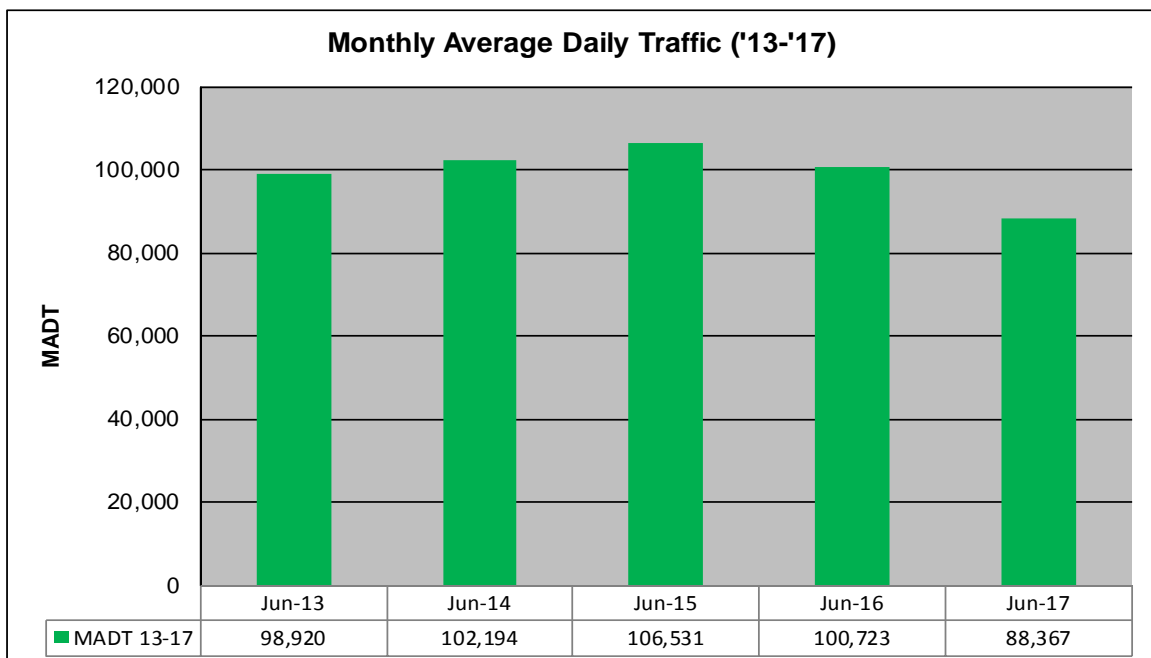
# MONTHLY REPORT, STATION NO. 309 (ATR)

## JUNE 2017

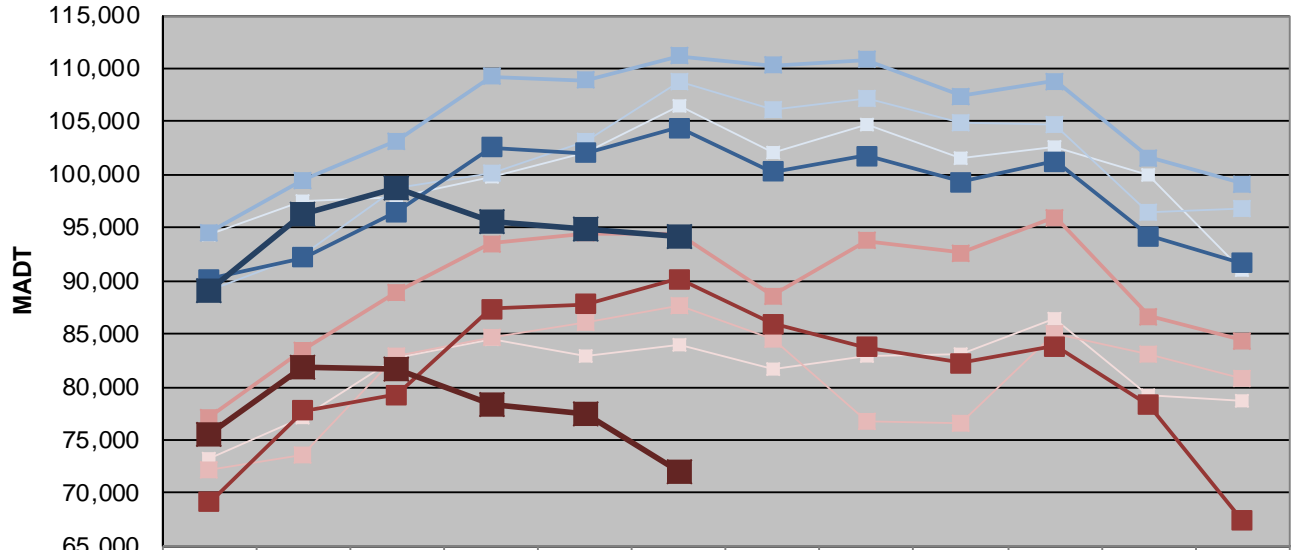
|   |                      |                                     |
|---|----------------------|-------------------------------------|
| Station Measurement: VOLUME                           |                      |                                     |
| Route: TH 65  | Route Direction: N/S | Lanes: 6                            |
| County: Hennepin                                      |                      | Closest City: Minneapolis           |
| Functional Class: Urban Minor Arterial                |                      |                                     |
| Location: S OF CSAH 5 (E FRANKLIN AVE) IN MINNEAPOLIS |                      |                                     |
| Ref Post: 000+00.480                                  | True Mile: 0.48      | Sequence No. 9838                   |
| <b>Volume: 2,651,000</b>                              |                      | <b>MADT: 88,367</b>                 |
| <b>Weekday (M-F) MADT: 94,184</b>                     |                      | <b>Weekend (Sa-Su) MADT: 71,946</b> |



Note: Increase in traffic April 2015 due to detours... Decrease in traffic April to June 2017 due to construction on I-35



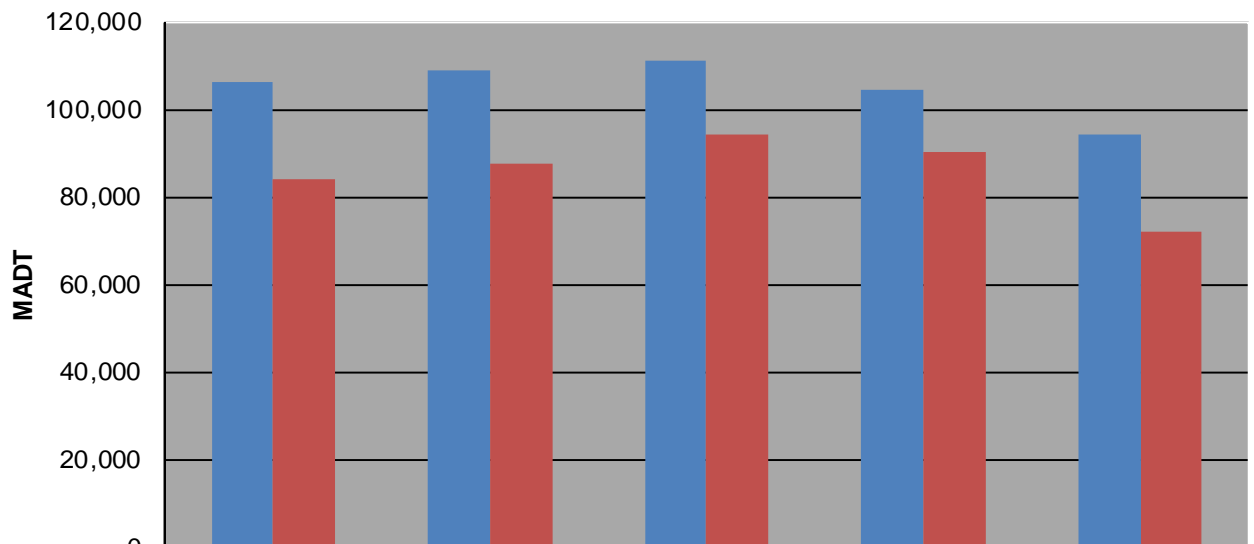
### Weekday (WD)/Weekend (WE) Monthly Average Daily Traffic



|        | Jan    | Feb    | Mar     | Apr     | May     | Jun     | Jul     | Aug     | Sep     | Oct     | Nov     | Dec    |
|--------|--------|--------|---------|---------|---------|---------|---------|---------|---------|---------|---------|--------|
| '13 WD | 94,380 | 97,426 | 97,926  | 99,764  | 102,162 | 106,436 | 102,012 | 104,710 | 101,548 | 102,578 | 99,902  | 90,962 |
| '13 WE | 73,278 | 77,124 | 82,752  | 84,464  | 82,974  | 83,890  | 81,746  | 82,922  | 83,026  | 86,350  | 79,146  | 78,670 |
| '14 WD | 88,992 | 92,406 | 98,826  | 100,088 | 103,198 | 108,808 | 106,164 | 107,210 | 104,948 | 104,634 | 96,510  | 96,860 |
| '14 WE | 72,118 | 73,646 | 82,852  | 84,638  | 86,040  | 87,650  | 84,574  | 76,808  | 76,656  | 84,934  | 83,170  | 80,730 |
| '15 WD | 94,596 | 99,456 | 103,164 | 109,224 | 108,880 | 111,202 | 110,348 | 110,834 | 107,432 | 108,816 | 101,624 | 99,134 |
| '15 WE | 77,108 | 83,448 | 88,946  | 93,522  | 94,432  | 94,368  | 88,608  | 93,740  | 92,636  | 95,970  | 86,628  | 84,316 |
| '16 WD | 90,194 | 92,146 | 96,490  | 102,592 | 102,062 | 104,390 | 100,306 | 101,742 | 99,334  | 101,246 | 94,172  | 91,660 |
| '16 WE | 69,130 | 77,756 | 79,270  | 87,380  | 87,758  | 90,132  | 85,980  | 83,742  | 82,248  | 83,824  | 78,318  | 67,404 |
| '17 WD | 89,104 | 96,304 | 98,668  | 95,622  | 94,896  | 94,184  |         |         |         |         |         |        |
| '17 WE | 75,528 | 81,780 | 81,756  | 78,262  | 77,380  | 71,946  |         |         |         |         |         |        |

Note: 'Weekday' defined as Monday-Friday, 'Weekend' defined as Saturday-Sunday

### Weekday/Weekend Monthly Average Daily Traffic ('13-'17)



|         | Jun-13  | Jun-14  | Jun-15  | Jun-16  | Jun-17 |
|---------|---------|---------|---------|---------|--------|
| Weekday | 106,436 | 108,808 | 111,202 | 104,390 | 94,184 |
| Weekend | 83,890  | 87,650  | 94,368  | 90,132  | 71,946 |