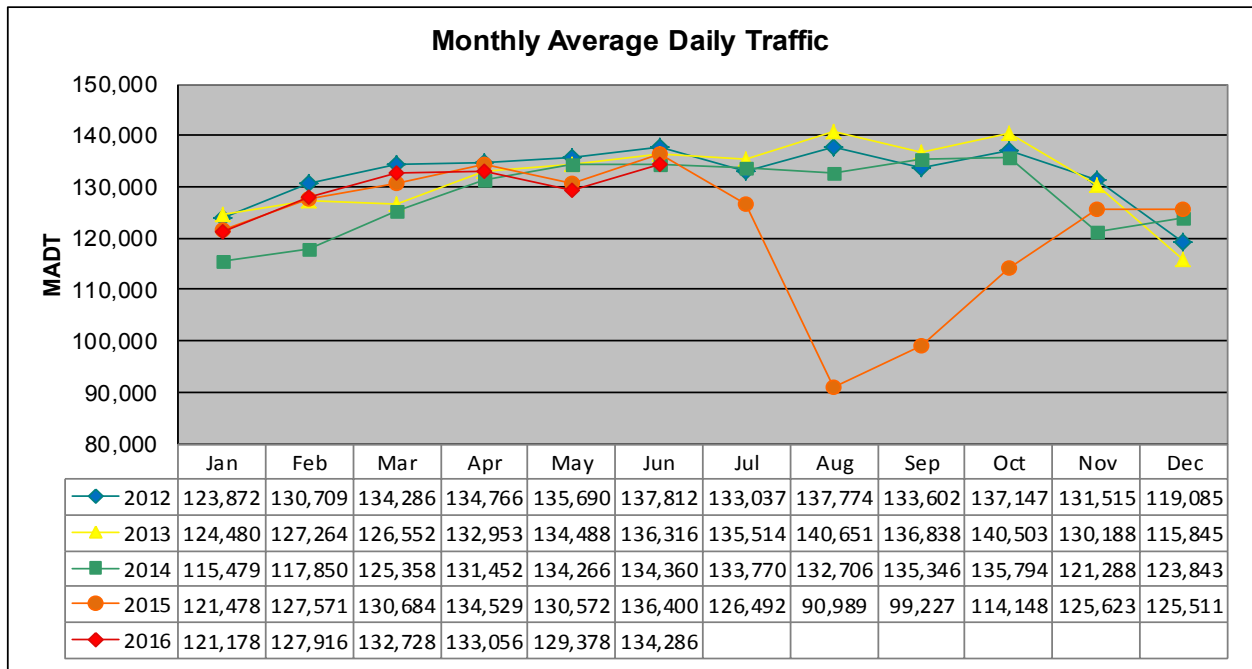


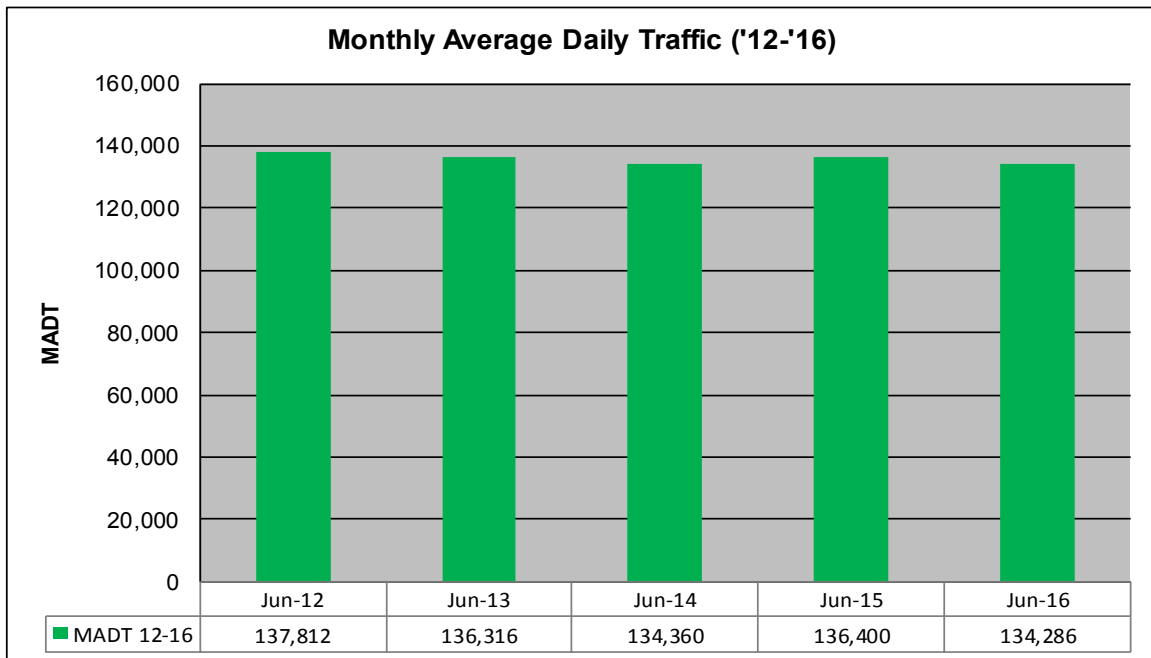
# MONTHLY REPORT, STATION NO. 326 (ATR)

## JUNE 2016

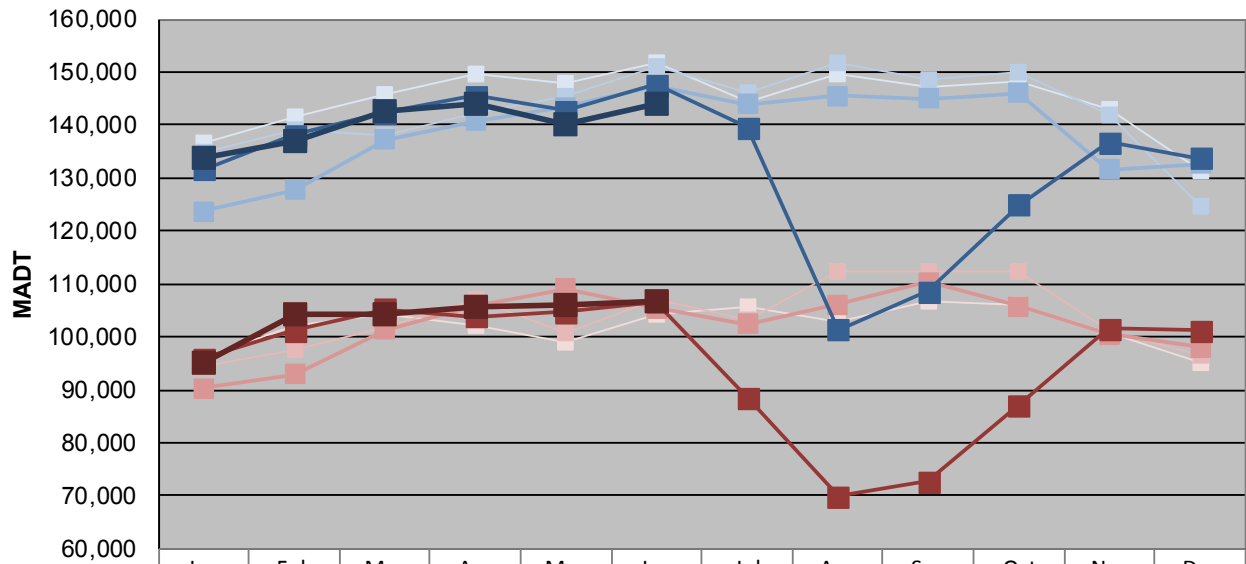
Station Measurement: VOLUME		
Route: I-394	Route Direction: E/W	Lanes: 6
County: Hennepin		Closest City: Minneapolis
Functional Class: Urban Principal Arterial - Interstate		
Location: E OF TH100 IN MINNEAPOLIS		
Ref Post: 007+00.250	True Mile: 7.25	Sequence No. 9850
<b>Volume: 4,028,565</b>		<b>MADT: 134,286</b>
<b>Weekday (M-F) MADT: 144,060</b>		<b>Weekend (Sa-Su) MADT: 106,692</b>



Note: Decrease in traffic July to October 2015 due to construction on I-394



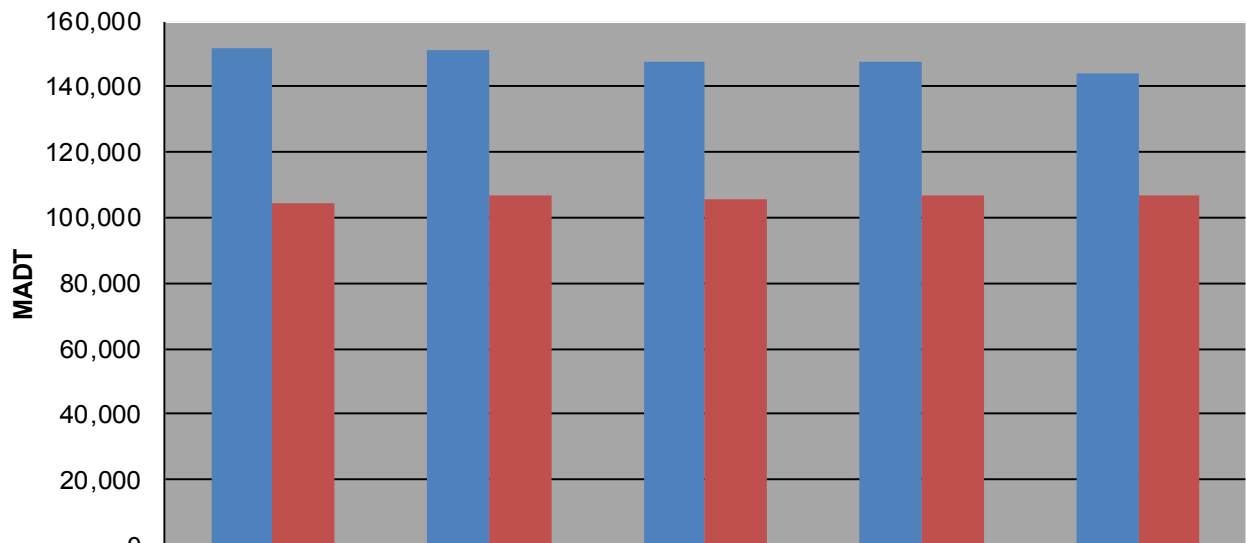
**Weekday (WD)/Weekend (WE) Monthly Average Daily Traffic**



	Jan	Feb	Mar	Apr	May	Jun	Jul	Aug	Sep	Oct	Nov	Dec
'12 WD	136,510	141,636	145,738	149,638	147,806	151,642	144,296	149,698	147,118	148,236	142,940	131,224
'12 WE	96,174	102,286	104,094	102,188	99,112	104,150	105,762	102,736	106,570	106,136	100,654	95,148
'13 WD	134,976	139,158	137,954	142,296	145,442	150,984	146,278	151,644	148,730	150,116	141,942	124,616
'13 WE	94,342	97,532	101,784	107,138	100,908	106,980	103,032	112,510	112,348	112,480	101,206	96,348
'14 WD	123,722	127,822	137,244	140,684	143,392	147,456	143,966	145,546	145,064	146,016	131,682	132,652
'14 WE	90,302	92,922	101,338	105,692	109,168	105,392	102,412	106,158	110,372	105,688	100,502	98,046
'15 WD	131,562	138,130	142,330	145,488	142,650	147,580	139,514	101,276	108,568	124,858	136,732	133,684
'15 WE	95,840	101,174	105,220	103,872	104,634	106,674	88,554	69,904	72,690	87,142	101,610	101,238
'16 WD	133,748	137,102	142,512	144,022	140,022	144,060						
'16 WE	95,198	104,364	104,246	105,662	106,034	106,692						

Note: 'Weekday' defined as Monday-Friday, 'Weekend' defined as Saturday-Sunday

**Weekday/Weekend Monthly Average Daily Traffic ('12-'16)**



	Jun-12	Jun-13	Jun-14	Jun-15	Jun-16
Weekday	151,642	150,984	147,456	147,580	144,060
Weekend	104,150	106,980	105,392	106,674	106,692