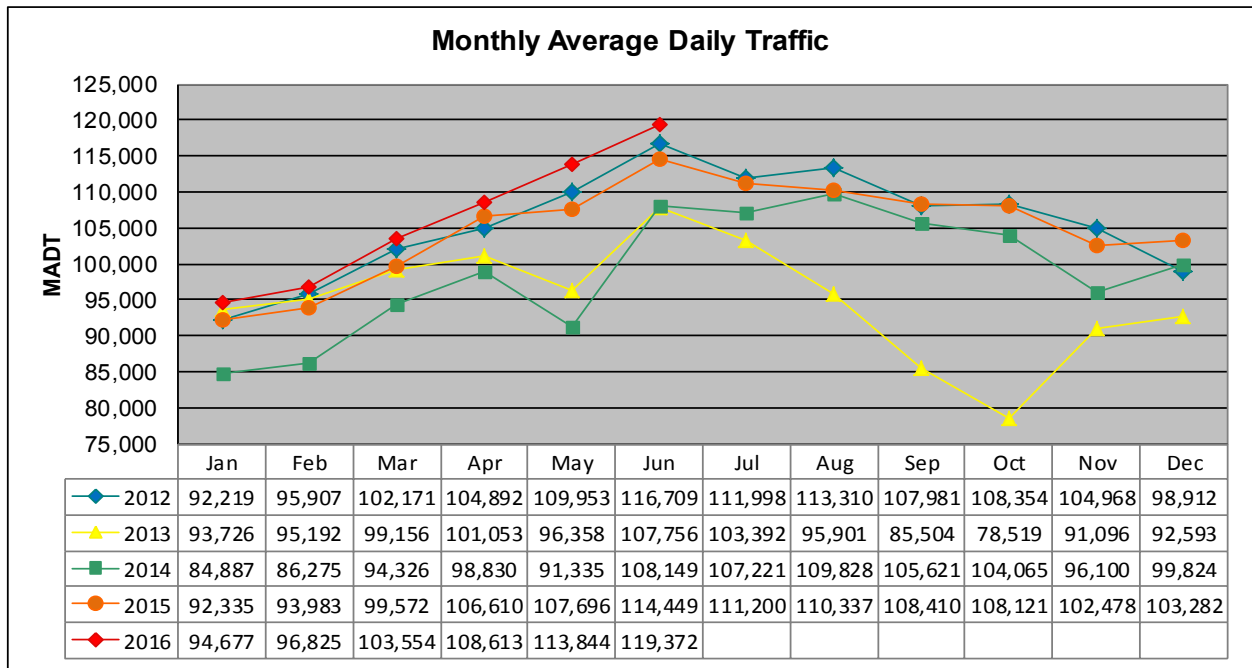


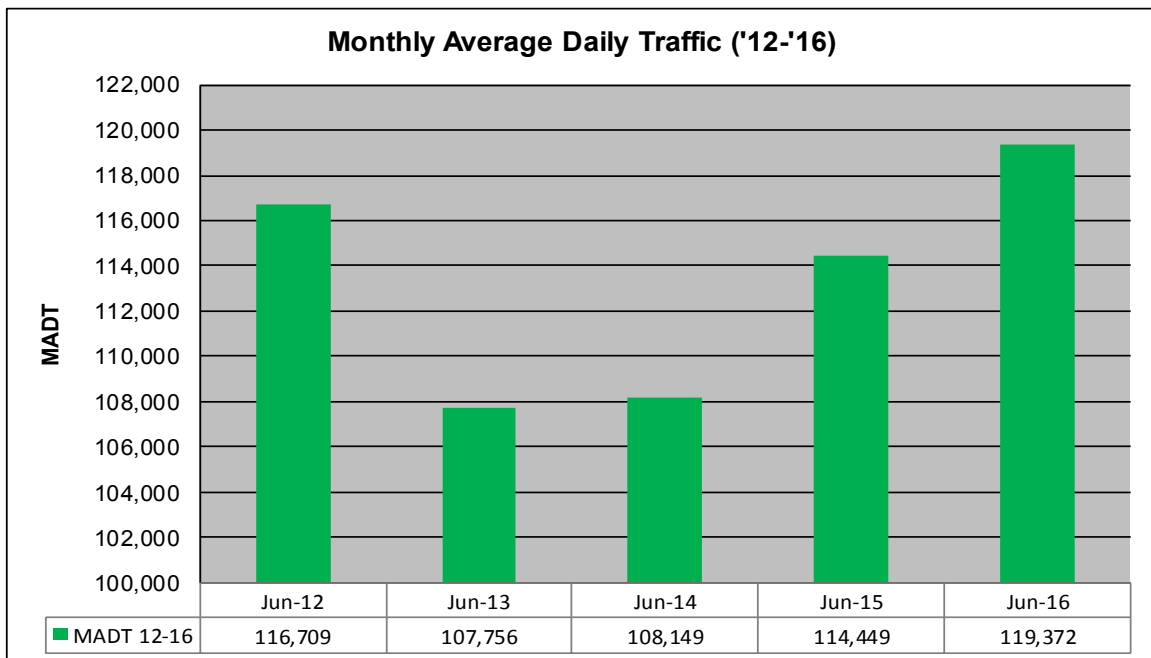
MONTHLY REPORT, STATION NO. 305 (ATR)

JUNE 2016

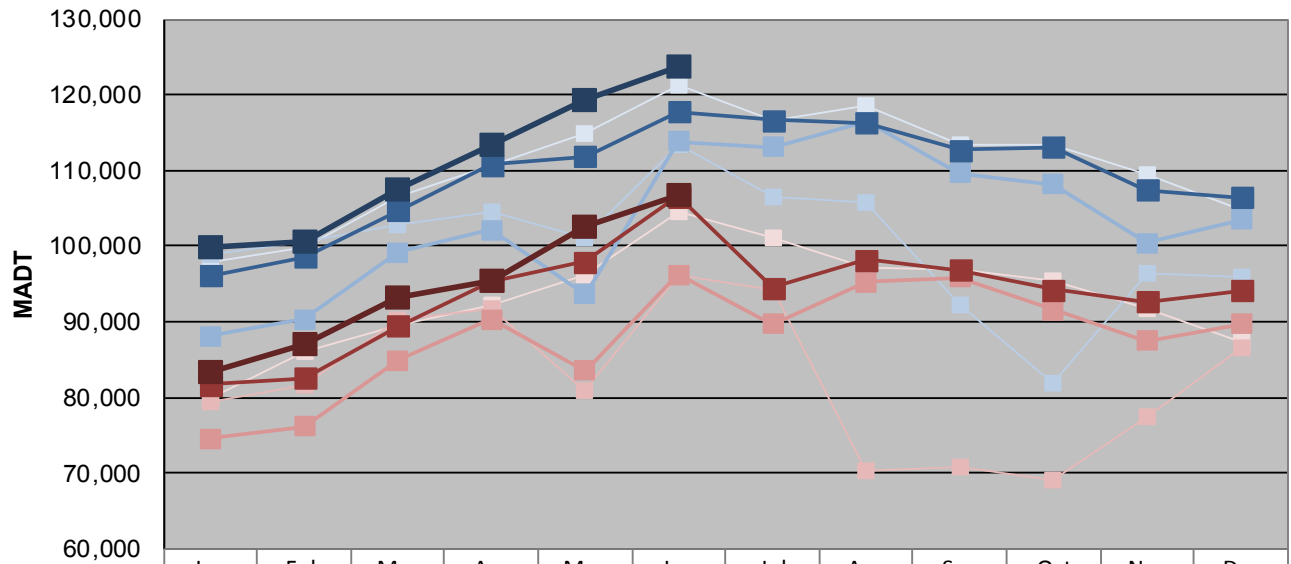
Station Measurement: VOLUME		
Route: I-35	Route Direction: N/S	Lanes: 6
County: Dakota		Closest City: Burnsville
Functional Class: Urban Principal Arterial - Interstate		
Location: S OF MSAS101 (CRYSTAL LAKE RD W) IN BURNSVILLE		
Ref Post: 087+00.070	True Mile: 87.071	Sequence No. 6786
Volume: 3,581,164		MADT: 119,372
Weekday (M-F) MADT: 123,822		Weekend (Sa-Su) MADT: 106,710



Note: Decrease in traffic May and August to November 2013 and May 2014 due to construction on I-35



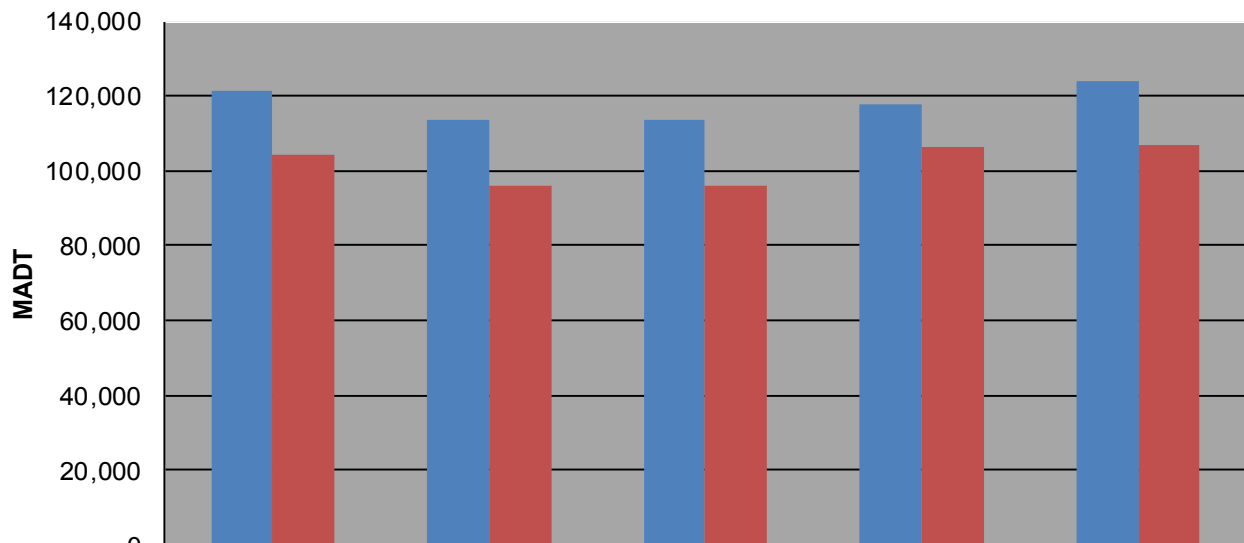
Weekday (WD)/Weekend (WE) Monthly Average Daily Traffic



	Jan	Feb	Mar	Apr	May	Jun	Jul	Aug	Sep	Oct	Nov	Dec
'12 WD	97,988	99,894	106,554	110,782	114,830	121,282	116,682	118,538	113,474	113,400	109,540	104,852
'12 WE	79,844	85,936	89,506	92,208	96,068	104,510	101,008	97,022	96,996	95,296	91,766	87,292
'13 WD	98,932	100,570	102,750	104,472	101,158	113,510	106,570	105,680	92,132	81,766	96,420	95,848
'13 WE	79,354	81,746	90,282	91,828	80,794	96,250	94,072	70,360	70,708	68,998	77,560	86,486
'14 WD	88,080	90,318	99,136	102,146	93,668	113,796	113,060	116,428	109,654	108,106	100,442	103,478
'14 WE	74,490	76,166	84,924	90,248	83,490	96,168	89,686	95,200	95,856	91,484	87,418	89,712
'15 WD	96,154	98,564	104,734	110,762	111,910	117,718	116,712	116,334	112,770	113,120	107,400	106,438
'15 WE	81,644	82,530	89,394	95,306	97,888	106,542	94,508	98,192	96,778	94,292	92,586	94,124
'16 WD	99,964	100,604	107,548	113,384	119,252	123,822						
'16 WE	83,422	87,146	93,096	95,530	102,650	106,710						

Note: 'Weekday' defined as Monday-Friday, 'Weekend' defined as Saturday-Sunday

Weekday/Weekend Monthly Average Daily Traffic ('12-'16)



	Jun-12	Jun-13	Jun-14	Jun-15	Jun-16
Weekday	121,282	113,510	113,796	117,718	123,822
Weekend	104,510	96,250	96,168	106,542	106,710