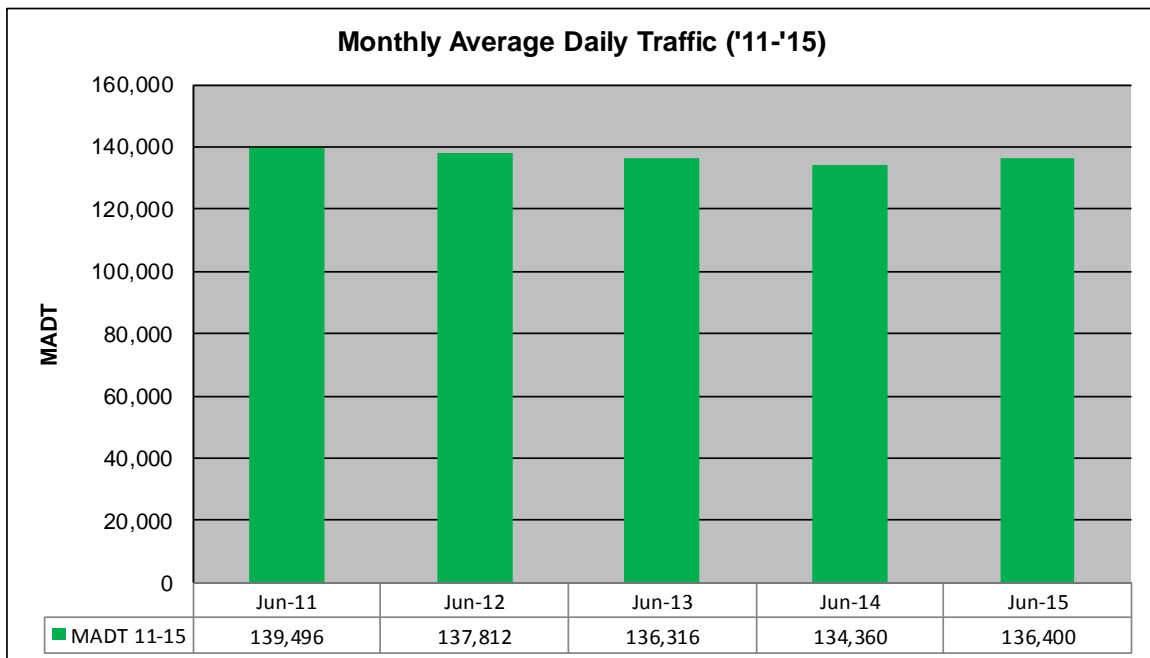
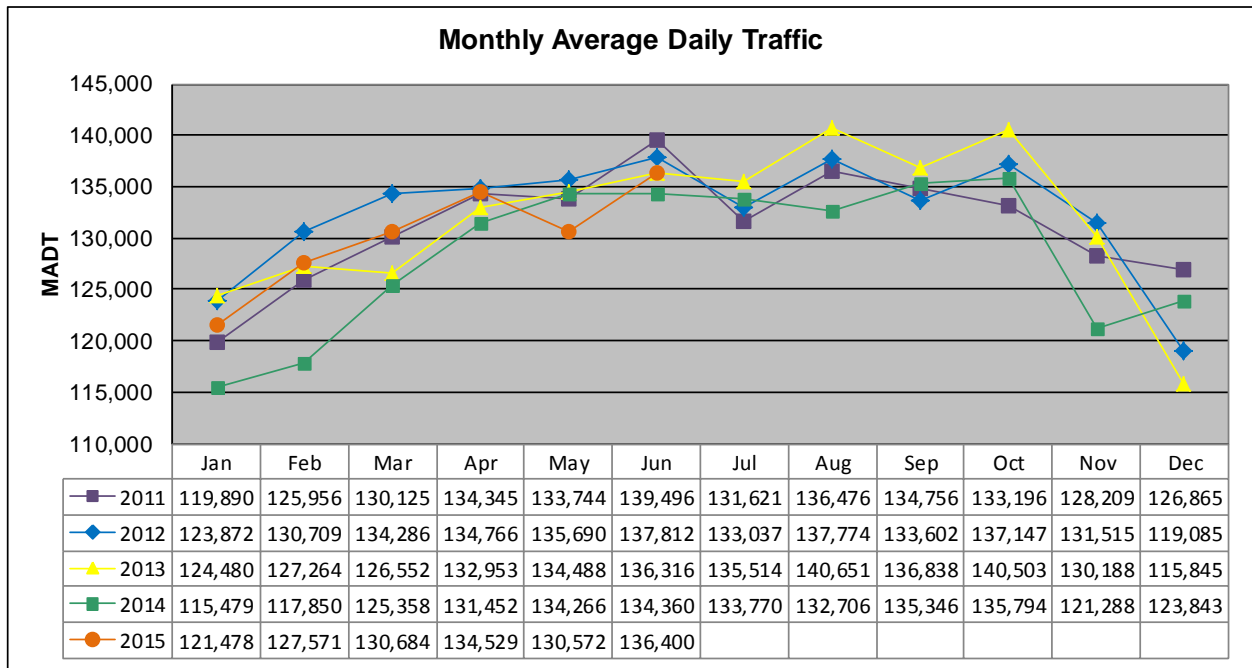


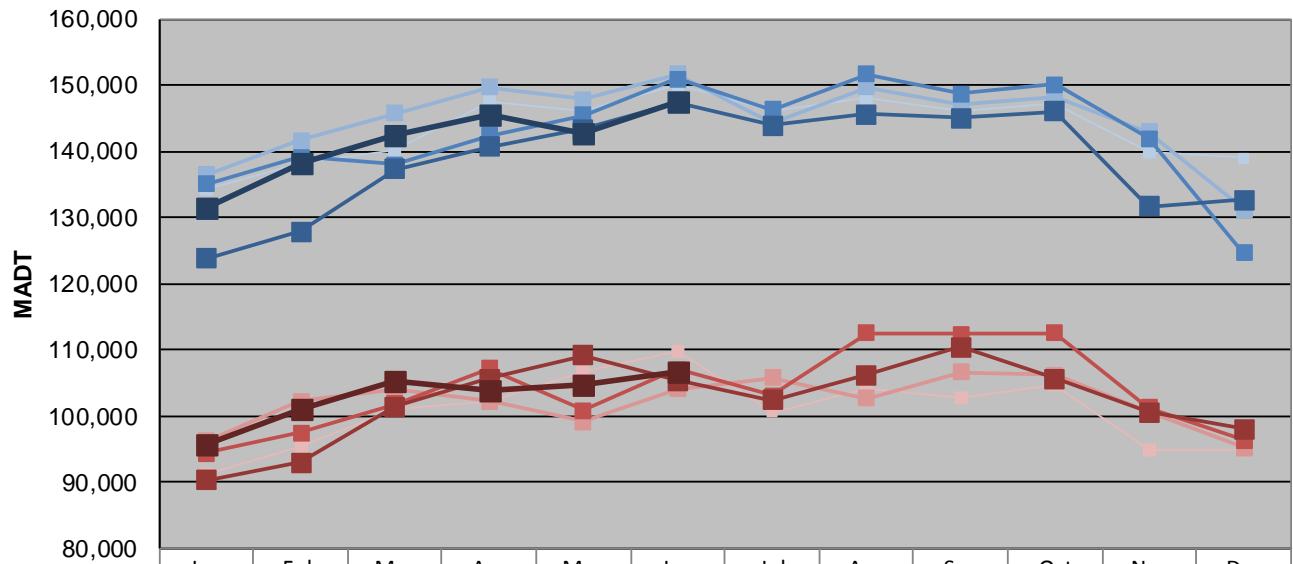
# MONTHLY REPORT, STATION NO. 326 (ATR)

## JUNE 2015

|                                                         |                      |                                      |
|---------------------------------------------------------|----------------------|--------------------------------------|
| Station Measurement: VOLUME                             |                      |                                      |
| Route: I-394                                            | Route Direction: E/W | Lanes: 6                             |
| County: Hennepin                                        |                      | Closest City: Minneapolis            |
| Functional Class: Urban Principal Arterial - Interstate |                      |                                      |
| Location: E OF TH100 IN MINNEAPOLIS                     |                      |                                      |
| Ref Post: 007+00.250                                    | True Mile: 7.25      | Sequence No. 9850                    |
| <b>Volume: 4,091,989</b>                                |                      | <b>MADT: 136,400</b>                 |
| <b>Weekday (M-F) MADT: 147,580</b>                      |                      | <b>Weekend (Sa-Su) MADT: 106,674</b> |



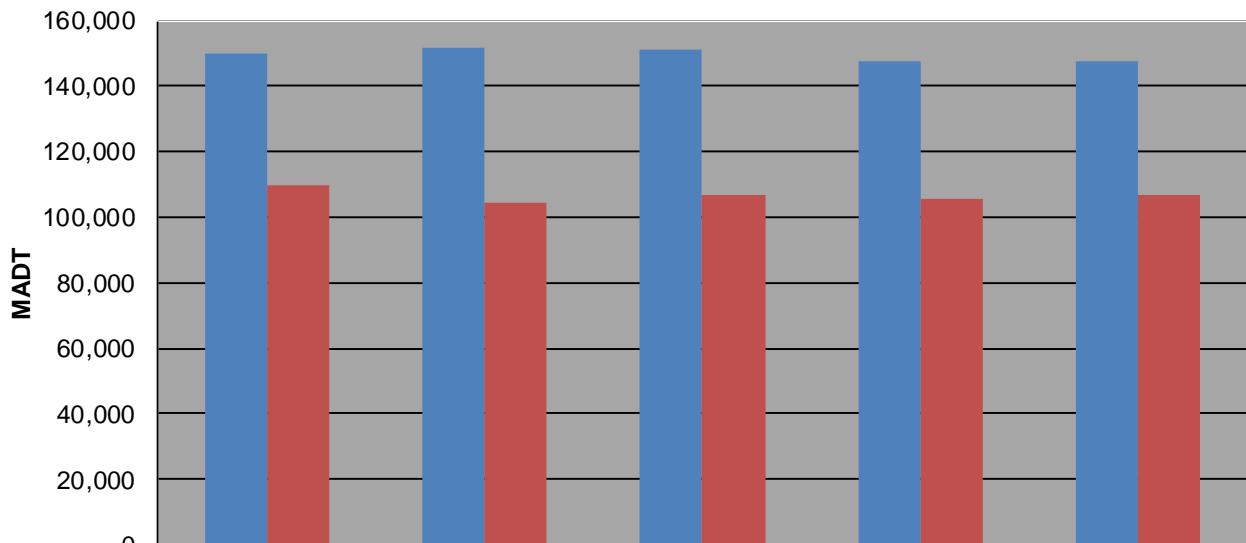
### Weekday (WD)/Weekend (WE) Monthly Average Daily Traffic



|        | Jan     | Feb     | Mar     | Apr     | May     | Jun     | Jul     | Aug     | Sep     | Oct     | Nov     | Dec     |
|--------|---------|---------|---------|---------|---------|---------|---------|---------|---------|---------|---------|---------|
| '11 WD | 134,220 | 138,160 | 140,194 | 147,468 | 145,970 | 150,066 | 146,210 | 148,022 | 145,974 | 147,206 | 139,768 | 138,944 |
| '11 WE | 91,298  | 95,422  | 101,116 | 102,128 | 106,656 | 109,794 | 100,622 | 104,160 | 102,790 | 104,690 | 94,884  | 94,962  |
| '12 WD | 136,510 | 141,636 | 145,738 | 149,638 | 147,806 | 151,642 | 144,296 | 149,698 | 147,118 | 148,236 | 142,940 | 131,224 |
| '12 WE | 96,174  | 102,286 | 104,094 | 102,188 | 99,112  | 104,150 | 105,762 | 102,736 | 106,570 | 106,136 | 100,654 | 95,148  |
| '13 WD | 134,976 | 139,158 | 137,954 | 142,296 | 145,442 | 150,984 | 146,278 | 151,644 | 148,730 | 150,116 | 141,942 | 124,616 |
| '13 WE | 94,342  | 97,532  | 101,784 | 107,138 | 100,908 | 106,980 | 103,032 | 112,510 | 112,348 | 112,480 | 101,206 | 96,348  |
| '14 WD | 123,722 | 127,822 | 137,244 | 140,684 | 143,392 | 147,456 | 143,966 | 145,546 | 145,064 | 146,016 | 131,682 | 132,652 |
| '14 WE | 90,302  | 92,922  | 101,338 | 105,692 | 109,168 | 105,392 | 102,412 | 106,158 | 110,372 | 105,688 | 100,502 | 98,046  |
| '15 WD | 131,562 | 138,130 | 142,330 | 145,488 | 142,650 | 147,580 |         |         |         |         |         |         |
| '15 WE | 95,840  | 101,174 | 105,220 | 103,872 | 104,634 | 106,674 |         |         |         |         |         |         |

Note: 'Weekday' defined as Monday-Friday, 'Weekend' defined as Saturday-Sunday

### Weekday/Weekend Monthly Average Daily Traffic ('11-'15)



|         | Jun-11  | Jun-12  | Jun-13  | Jun-14  | Jun-15  |
|---------|---------|---------|---------|---------|---------|
| Weekday | 150,066 | 151,642 | 150,984 | 147,456 | 147,580 |
| Weekend | 109,794 | 104,150 | 106,980 | 105,392 | 106,674 |