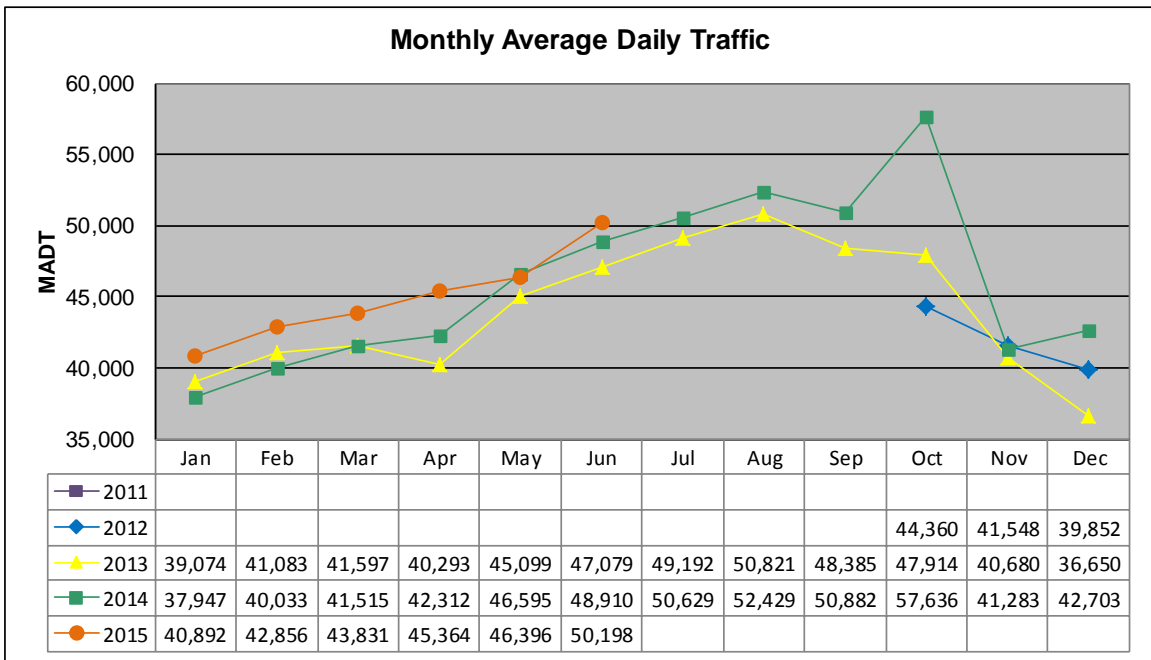


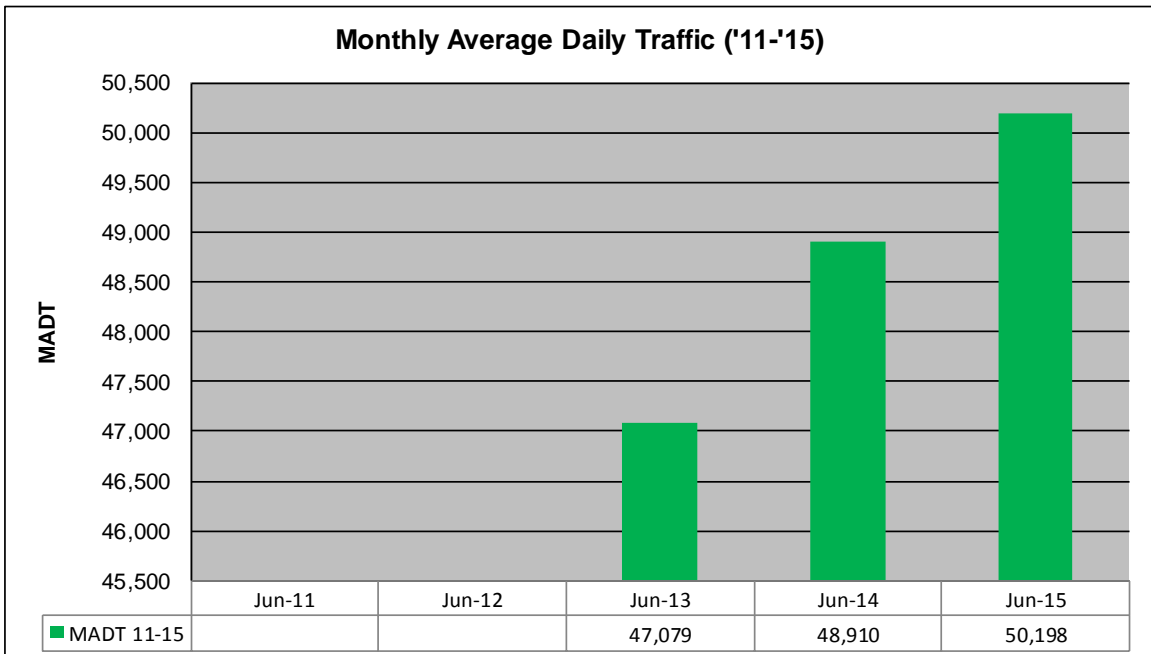
MONTHLY REPORT, STATION NO. 103 (ATR)

JUNE 2015

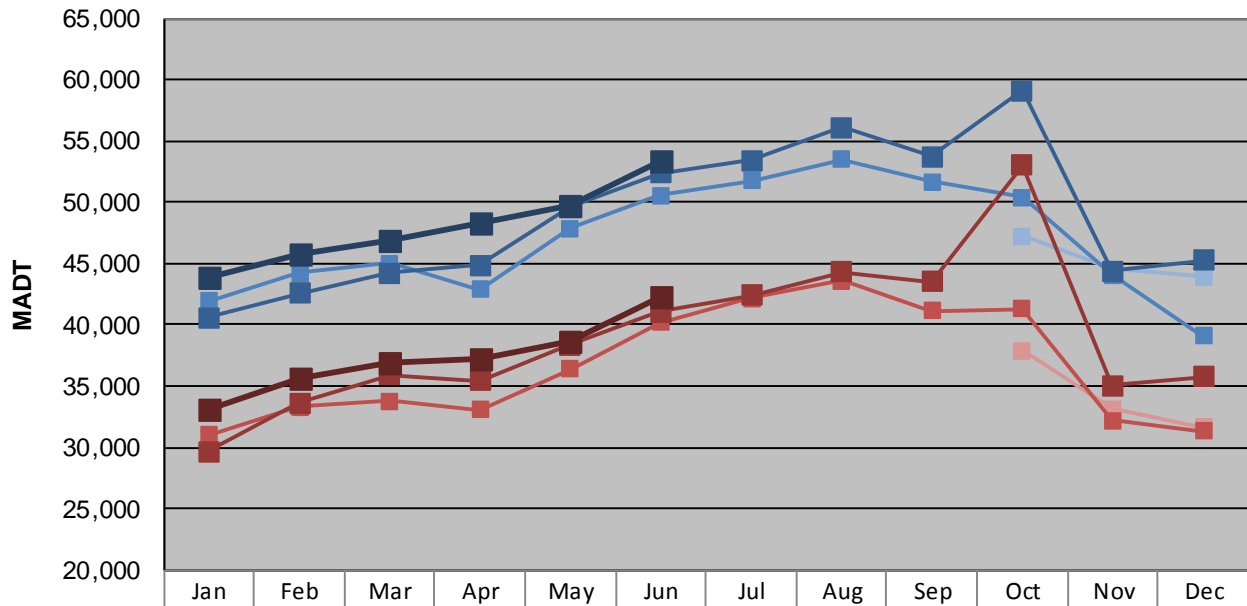
Station Measurement: VOLUME/SPEED/CLASS		
Route: I-35	Route Direction: N/S	Lanes: 4
County: St Louis	Closest City: Duluth	
Functional Class: Urban Principal Arterial - Interstate		
Location: E OF MSAS107 (CENTRAL AVE) IN DULUTH		
Ref Post: 252+00.600	True Mile: 252.622	Sequence No. 9825
Volume: 1,505,927		MADT: 50,198
Weekday (M-F) MADT: 53,340		Weekend (Sa-Su) MADT: 42,294



Note: No data from January 2011 to September 2012 due to sensors destroyed by construction... Increase in traffic October 2014 due to detour from bridge construction



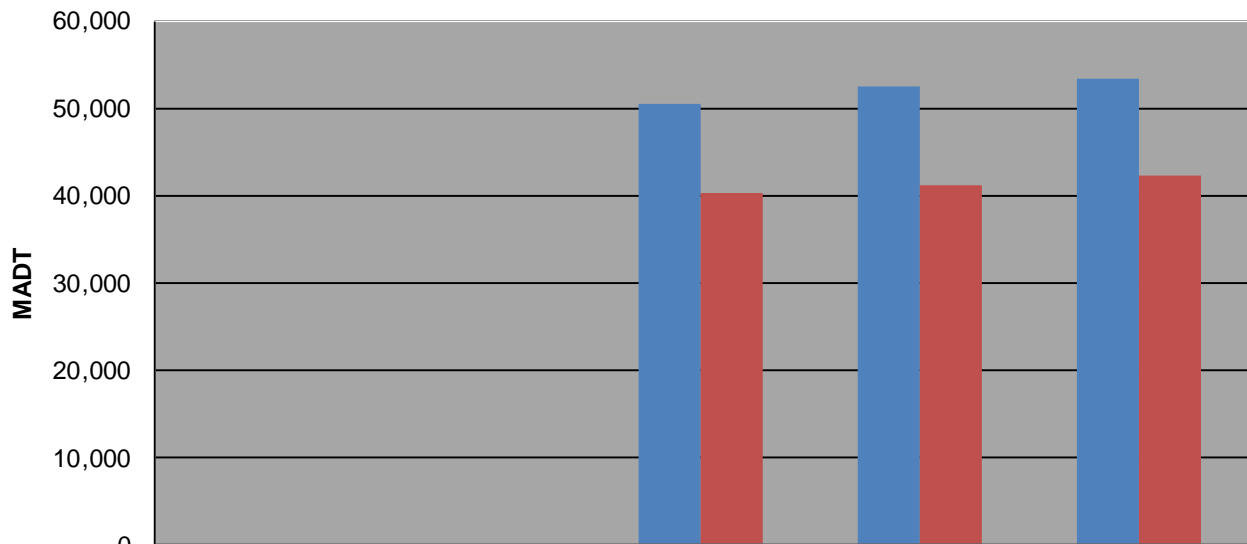
Weekday (WD)/Weekend (WE) Monthly Average Daily Traffic



'11 WD												
'11 WE												
'12 WD										47,226	44,522	43,934
'12 WE										37,924	33,176	31,674
'13 WD	41,942	44,202	45,038	42,860	47,856	50,536	51,758	53,476	51,702	50,416	44,058	39,108
'13 WE	31,028	33,286	33,786	33,044	36,374	40,166	42,140	43,614	41,114	41,300	32,238	31,314
'14 WD	40,588	42,604	44,234	44,874	49,584	52,376	53,402	56,076	53,756	59,124	44,412	45,260
'14 WE	29,680	33,606	35,954	35,482	38,336	41,080	42,448	44,324	43,532	53,056	35,030	35,754
'15 WD	43,888	45,732	46,962	48,376	49,790	53,340						
'15 WE	33,054	35,664	36,858	37,162	38,676	42,294						

Note: 'Weekday' defined as Monday-Friday, 'Weekend' defined as Saturday-Sunday

Weekday/Weekend Monthly Average Daily Traffic ('11-'15)



Weekday			50,536	52,376	53,340
Weekend			40,166	41,080	42,294