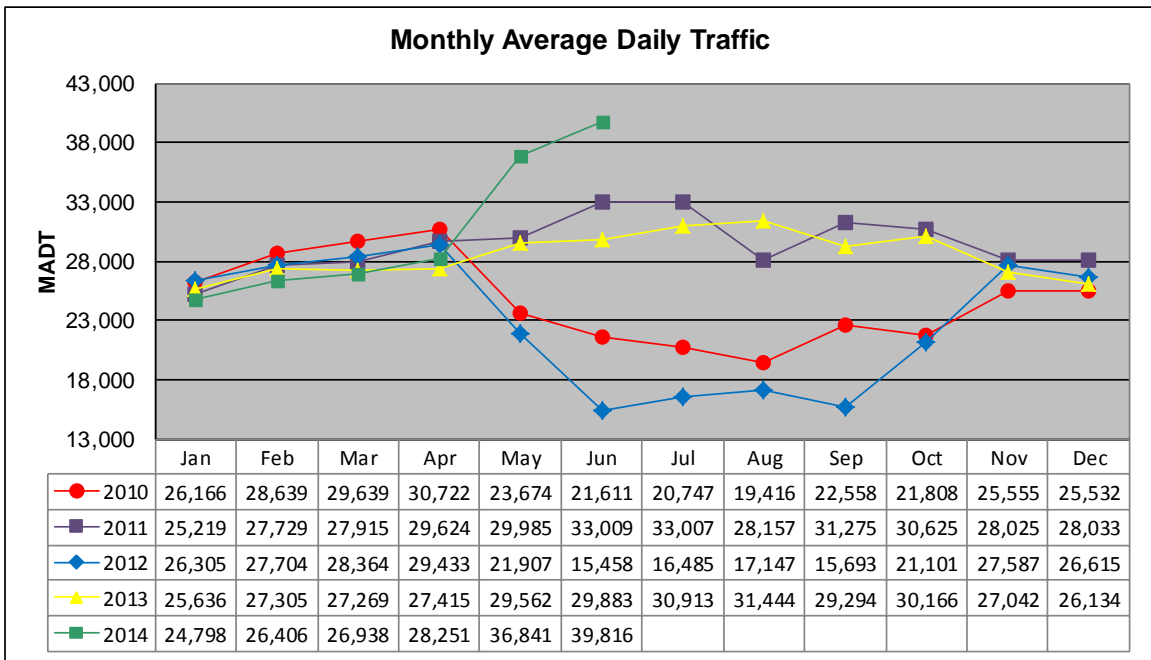


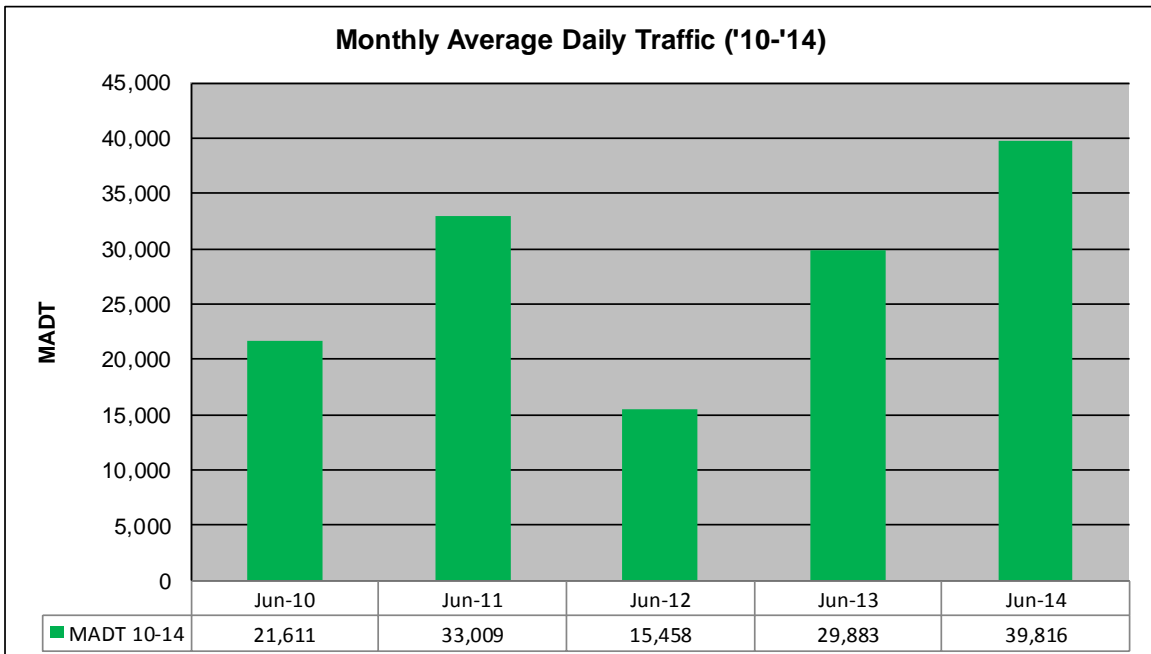
MONTHLY REPORT, STATION NO. 38 (WIM)

JUNE 2014

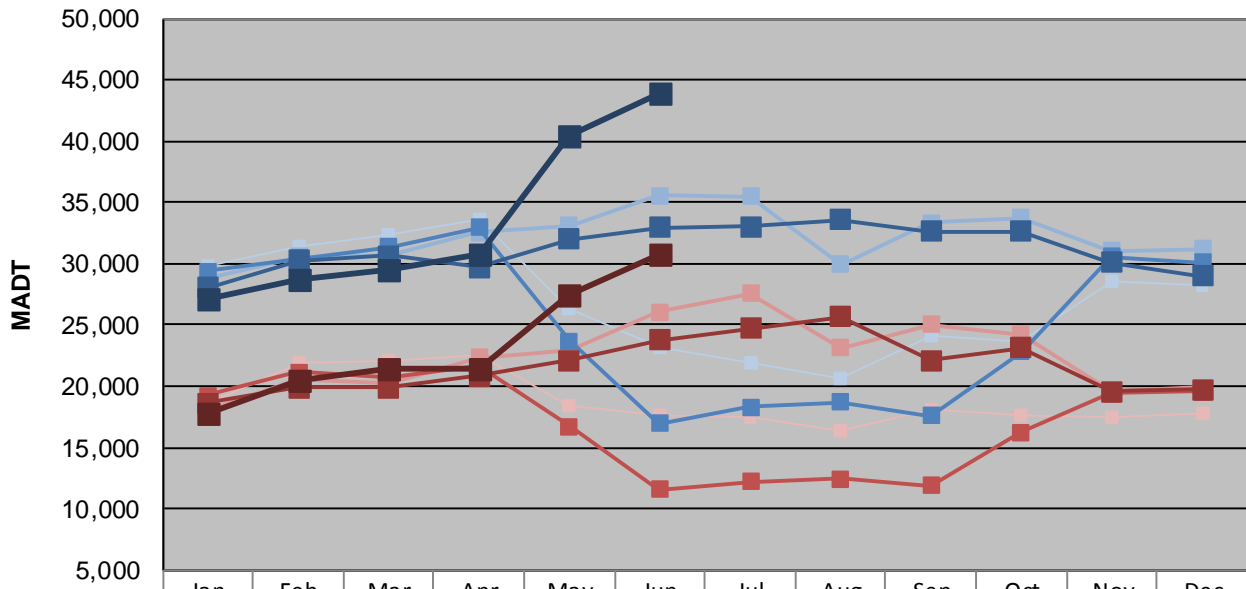
Station Measurement: VOLUME/SPEED/CLASS/WEIGHT		
Route: I-535	Route Direction: N/S	Lanes: 4
County: St Louis	Closest City: Duluth	
Functional Class: Urban Principal Arterial - Interstate		
Location: SW OF MSAS149 (GARFIELD AVE) IN DULUTH		
Ref Post: 001+00.053	True Mile: 1.053	Sequence No. 9823
Volume: 1,194,493		MADT: 39,816
Weekday (M-F) MADT: 43,894		Weekend (Sa-Su) MADT: 30,708



Note: Decrease in traffic June to September 2010, August 2011, and May to September 2012 due to construction on I-535... Increase in traffic May/June 2014 due to detour from I-35



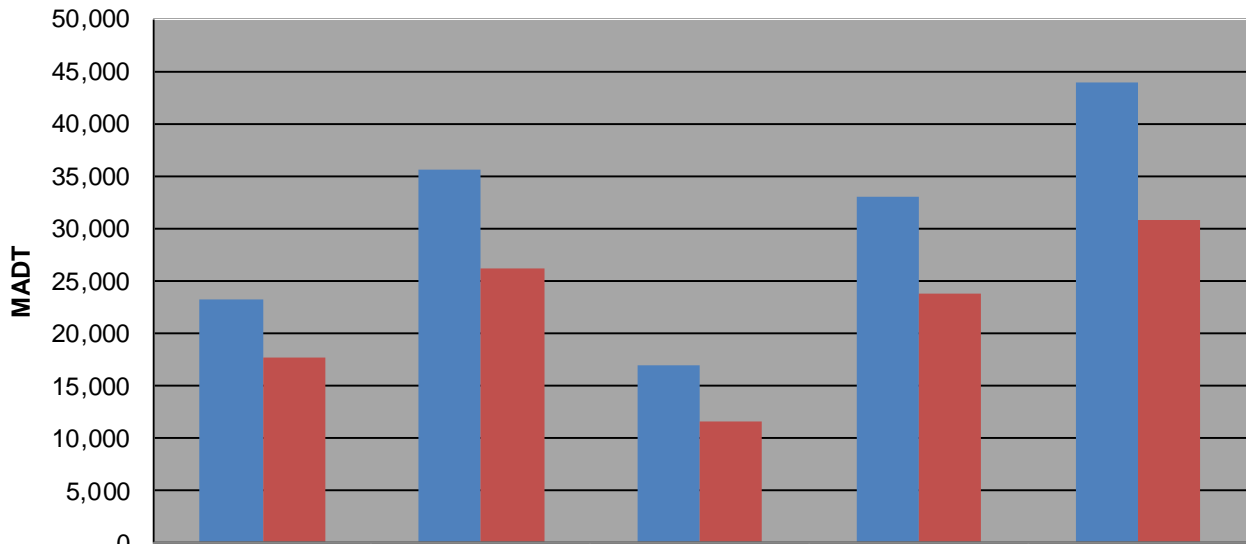
Weekday (WD)/Weekend (WE) Monthly Average Daily Traffic



	Jan	Feb	Mar	Apr	May	Jun	Jul	Aug	Sep	Oct	Nov	Dec
'10 WD	29,784	31,348	32,348	33,588	26,304	23,128	21,960	20,710	24,168	23,722	28,516	28,236
'10 WE	18,586	21,866	22,024	22,548	18,424	17,586	17,424	16,446	18,104	17,576	17,554	17,758
'11 WD	28,722	30,600	30,642	32,540	33,082	35,532	35,460	29,982	33,378	33,740	31,034	31,172
'11 WE	17,994	20,554	20,256	22,378	23,012	26,096	27,534	23,134	25,010	24,254	19,572	19,866
'12 WD	29,374	30,388	31,334	32,922	23,698	16,972	18,274	18,728	17,590	22,788	30,604	30,108
'12 WE	19,280	21,126	20,734	21,666	16,692	11,574	12,244	12,466	11,900	16,278	19,394	19,574
'13 WD	28,082	30,274	30,670	29,696	31,990	32,926	33,066	33,624	32,598	32,646	30,074	29,020
'13 WE	18,636	19,884	19,906	20,848	22,088	23,800	24,684	25,706	22,132	23,164	19,610	19,770
'14 WD	27,156	28,780	29,558	30,716	40,404	43,894						
'14 WE	17,746	20,472	21,432	21,476	27,506	30,708						

Note: 'Weekday' defined as Monday-Friday, 'Weekend' defined as Saturday-Sunday

Weekday/Weekend Monthly Average Daily Traffic ('10-'14)



	Jun-10	Jun-11	Jun-12	Jun-13	Jun-14
Weekday	23,128	35,532	16,972	32,926	43,894
Weekend	17,586	26,096	11,574	23,800	30,708