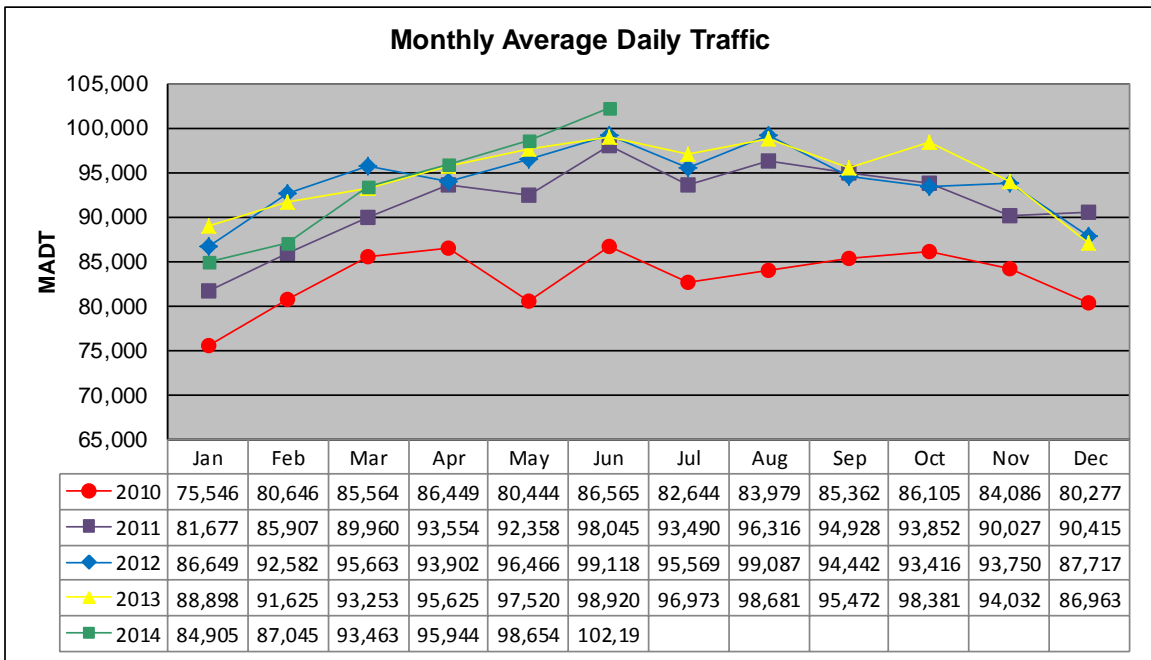


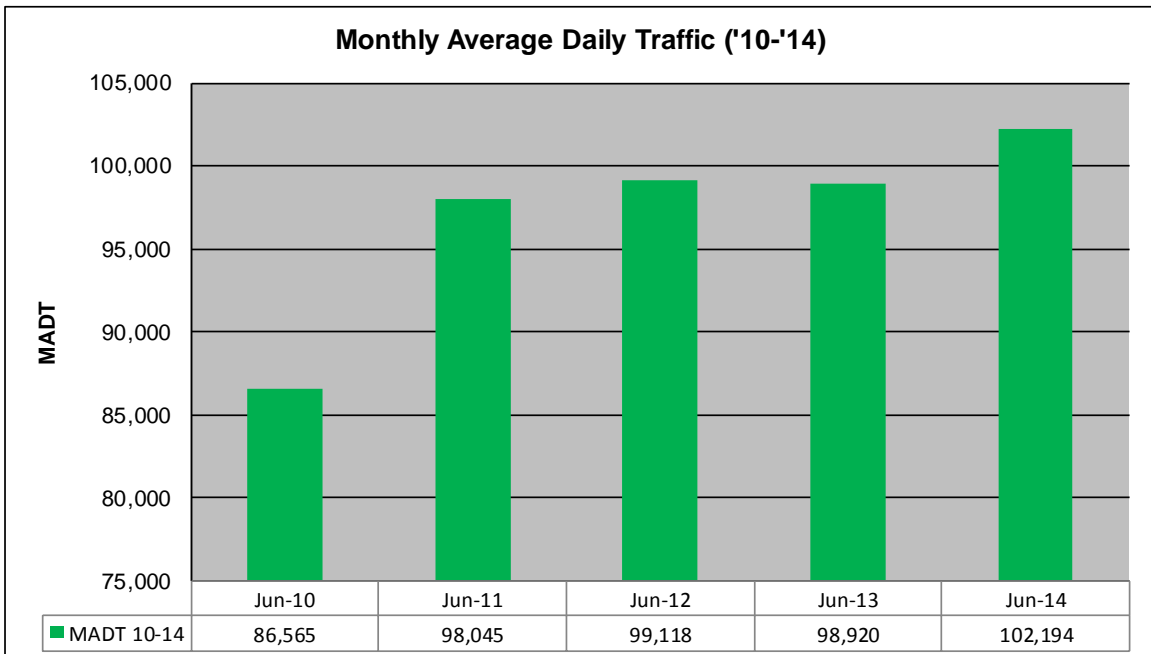
# MONTHLY REPORT, STATION NO. 309 (ATR)

## JUNE 2014

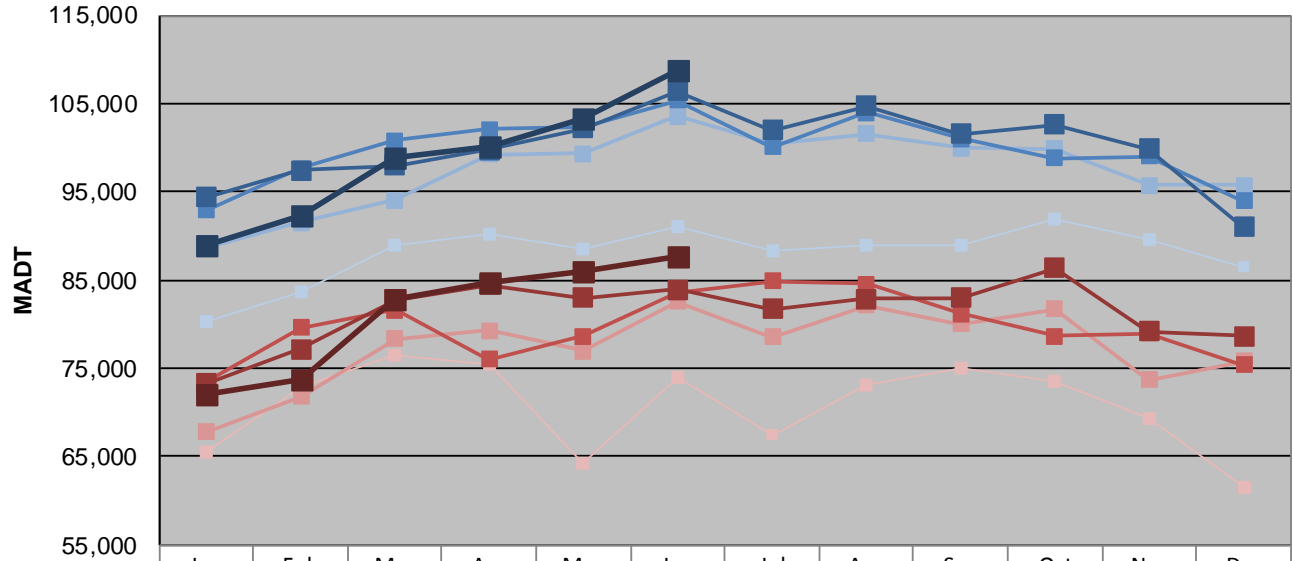
<b>Station Measurement: VOLUME</b>		
Route: TH 65	Route Direction: N/S	Lanes: 6
County: Hennepin		Closest City: Minneapolis
Functional Class: Urban Minor Arterial		
Location: S OF CSAH 5 (E FRANKLIN AVE) IN MINNEAPOLIS		
Ref Post: 000+00.480	True Mile: 0.48	Sequence No. 9838
<b>Volume: 3,065,832</b>		<b>MADT: 102,194</b>
<b>Weekday (M-F) MADT: 108,808</b>		<b>Weekend (Sa-Su) MADT: 87,650</b>



Note: Decrease in traffic 2008-2009 due to I-35W bridge collapse and construction on TH 62... Although traffic increased from 2009 to 2010, volumes were lower than expected due to construction on I-35W and TH 62



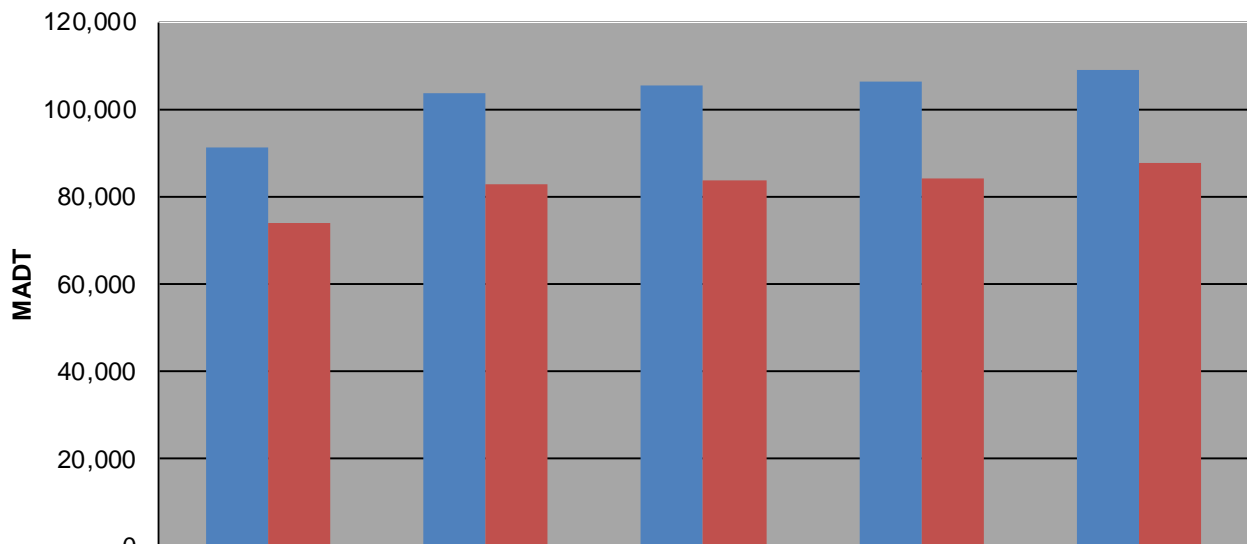
**Weekday (WD)/Weekend (WE) Monthly Average Daily Traffic**



	Jan	Feb	Mar	Apr	May	Jun	Jul	Aug	Sep	Oct	Nov	Dec
'10 WD	80,314	83,736	88,986	90,184	88,512	91,110	88,276	88,858	88,964	91,878	89,498	86,498
'10 WE	65,512	72,922	76,566	75,508	64,334	74,030	67,466	73,024	75,024	73,546	69,320	61,546
'11 WD	88,724	91,542	94,104	99,192	99,328	103,524	100,430	101,516	99,974	99,858	95,792	95,786
'11 WE	67,784	71,794	78,362	79,268	76,928	82,578	78,590	82,114	80,026	81,762	73,722	75,806
'12 WD	92,882	97,624	100,822	102,040	102,392	105,360	100,084	103,934	101,050	98,834	99,032	93,974
'12 WE	73,406	79,596	81,592	76,054	78,704	83,610	84,858	84,582	81,230	78,700	78,996	75,418
'13 WD	94,380	97,426	97,926	99,764	102,162	106,436	102,012	104,710	101,548	102,578	99,902	90,962
'13 WE	73,278	77,124	82,752	84,464	82,974	83,890	81,746	82,922	83,026	86,350	79,146	78,670
'14 WD	88,992	92,406	98,826	100,088	103,198	108,808						
'14 WE	72,118	73,646	82,852	84,638	86,040	87,650						

Note: 'Weekday' defined as Monday-Friday, 'Weekend' defined as Saturday-Sunday

**Weekday/Weekend Monthly Average Daily Traffic ('10-'14)**



	Jun-10	Jun-11	Jun-12	Jun-13	Jun-14
Weekday	91,110	103,524	105,360	106,436	108,808
Weekend	74,030	82,578	83,610	83,890	87,650