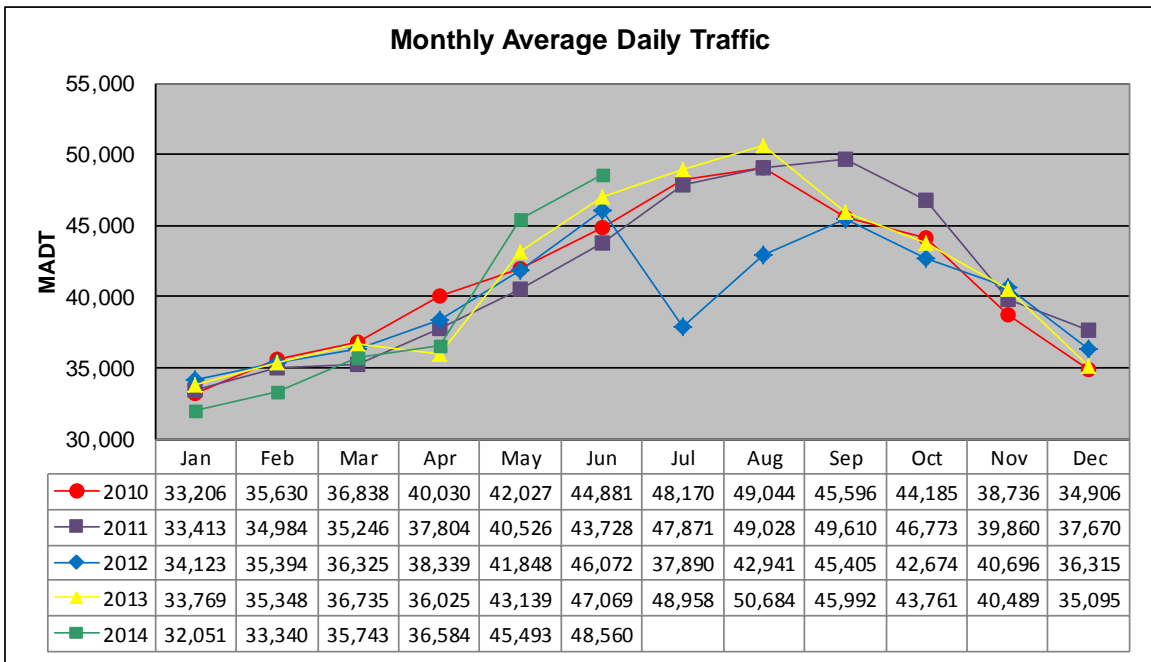


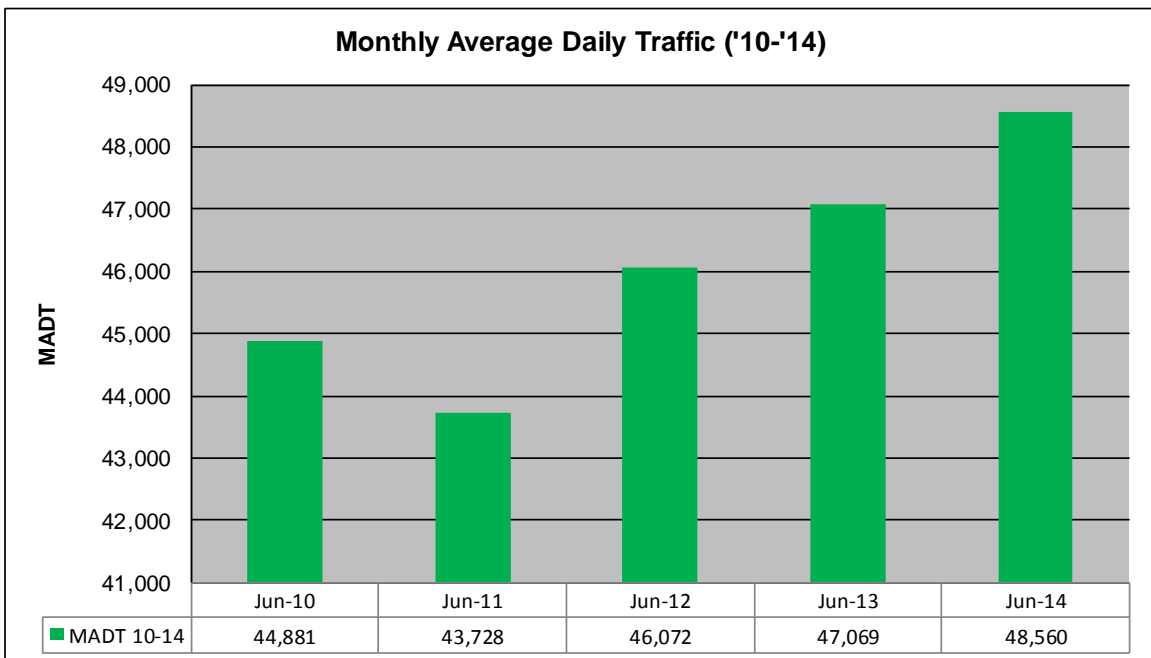
# MONTHLY REPORT, STATION NO. 191 (ATR)

## JUNE 2014

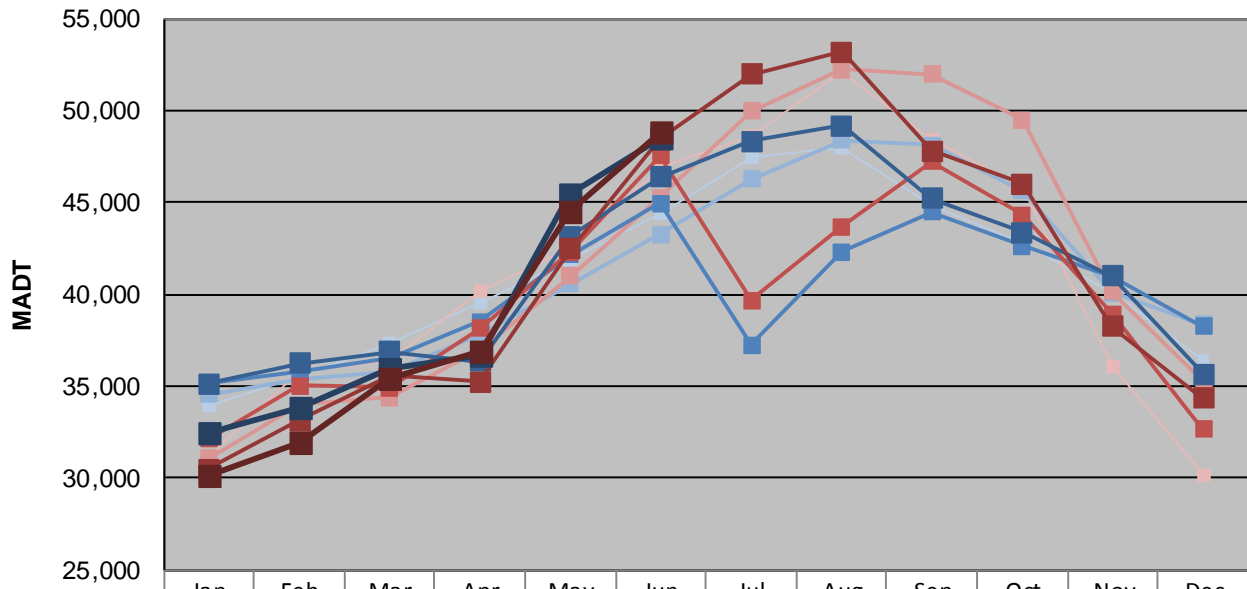
|  |                      |                                     |
|--|----------------------|-------------------------------------|
| Station Measurement: VOLUME/SPEED/CLASS                    |                      |                                     |
| Route: I-35  | Route Direction: N/S | Lanes: 4                            |
| County: Chisago  |                      | Closest City: Wyoming               |
| Functional Class: Urban Principal Arterial - Interstate    |                      |                                     |
| Location: 1.5 MI N OF CSAH22 (E VIKING BLVD), N OF WYOMING |                      |                                     |
| Ref Post: 137+00.500                                       | True Mile: 137.519   | Sequence No. 6784                   |
| <b>Volume: 1,456,804</b>                                   |                      | <b>MADT: 48,560</b>                 |
| <b>Weekday (M-F) MADT: 48,526</b>                          |                      | <b>Weekend (Sa-Su) MADT: 48,822</b> |



Note: Decrease in traffic July/August 2012 due to construction on I-35



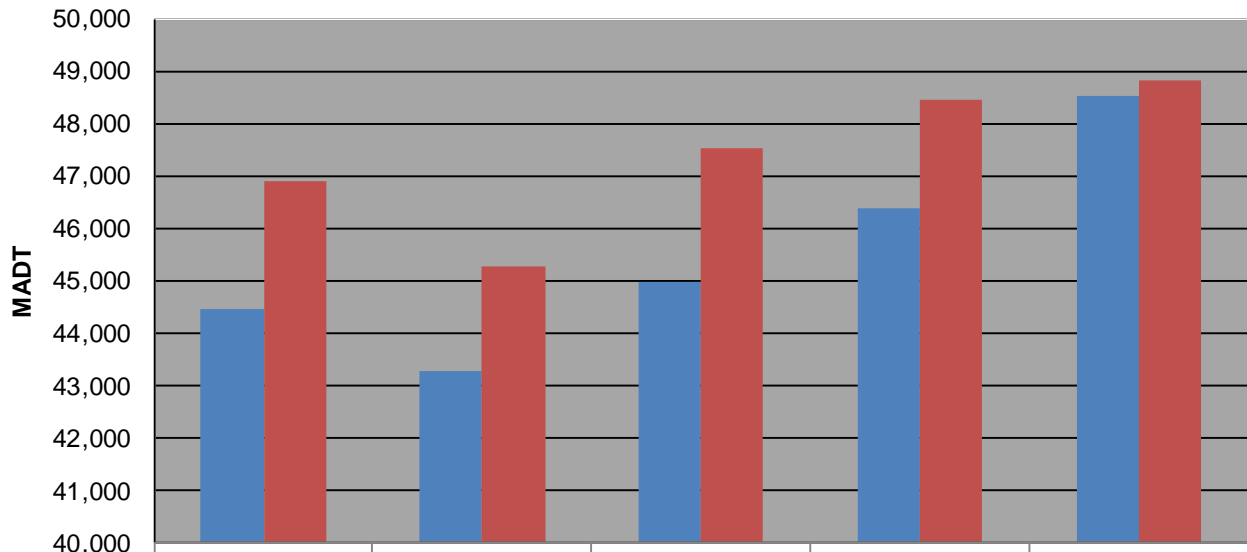
### Weekday (WD)/Weekend (WE) Monthly Average Daily Traffic



|        | Jan    | Feb    | Mar    | Apr    | May    | Jun    | Jul    | Aug    | Sep    | Oct    | Nov    | Dec    |
|--------|--------|--------|--------|--------|--------|--------|--------|--------|--------|--------|--------|--------|
| '10 WD | 33,906 | 35,560 | 37,304 | 39,560 | 41,864 | 44,442 | 47,458 | 48,024 | 44,800 | 42,780 | 40,084 | 36,388 |
| '10 WE | 31,202 | 35,806 | 36,396 | 40,164 | 42,532 | 46,914 | 48,634 | 52,092 | 48,460 | 45,916 | 36,096 | 30,142 |
| '11 WD | 34,574 | 35,384 | 35,844 | 37,830 | 40,574 | 43,288 | 46,268 | 48,396 | 48,140 | 45,638 | 40,124 | 38,356 |
| '11 WE | 31,100 | 33,958 | 34,392 | 36,948 | 41,006 | 45,270 | 49,968 | 52,220 | 51,950 | 49,496 | 40,134 | 35,250 |
| '12 WD | 35,140 | 35,780 | 36,526 | 38,518 | 42,154 | 44,976 | 37,236 | 42,290 | 44,486 | 42,606 | 40,974 | 38,230 |
| '12 WE | 32,122 | 35,044 | 34,912 | 38,172 | 42,302 | 47,516 | 39,680 | 43,676 | 47,244 | 44,330 | 38,920 | 32,670 |
| '13 WD | 35,138 | 36,238 | 36,870 | 36,368 | 43,134 | 46,384 | 48,314 | 49,166 | 45,222 | 43,358 | 40,996 | 35,654 |
| '13 WE | 30,494 | 33,120 | 35,584 | 35,270 | 42,480 | 48,438 | 51,948 | 53,186 | 47,794 | 46,028 | 38,262 | 34,338 |
| '14 WD | 32,448 | 33,878 | 35,994 | 36,676 | 45,508 | 48,526 |        |        |        |        |        |        |
| '14 WE | 30,104 | 31,994 | 35,428 | 36,938 | 44,460 | 48,822 |        |        |        |        |        |        |

Note: 'Weekday' defined as Monday-Friday, 'Weekend' defined as Saturday-Sunday

### Weekday/Weekend Monthly Average Daily Traffic ('10-'14)



|         | Jun-10 | Jun-11 | Jun-12 | Jun-13 | Jun-14 |
|---------|--------|--------|--------|--------|--------|
| Weekday | 44,442 | 43,288 | 44,976 | 46,384 | 48,526 |
| Weekend | 46,914 | 45,270 | 47,516 | 48,438 | 48,822 |