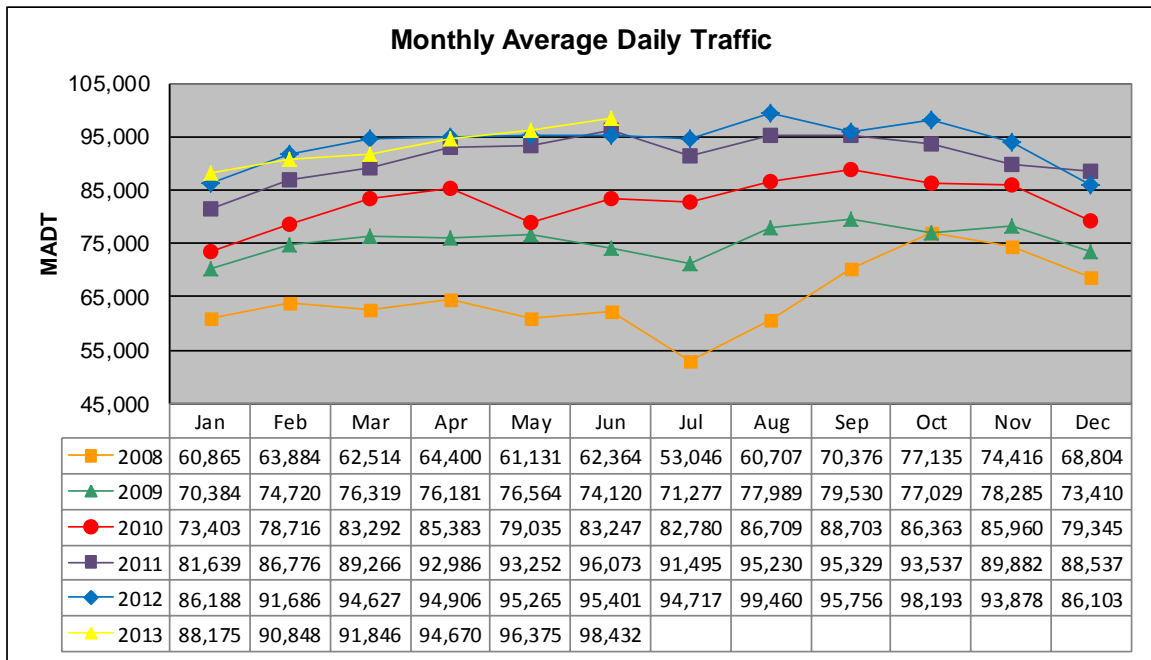


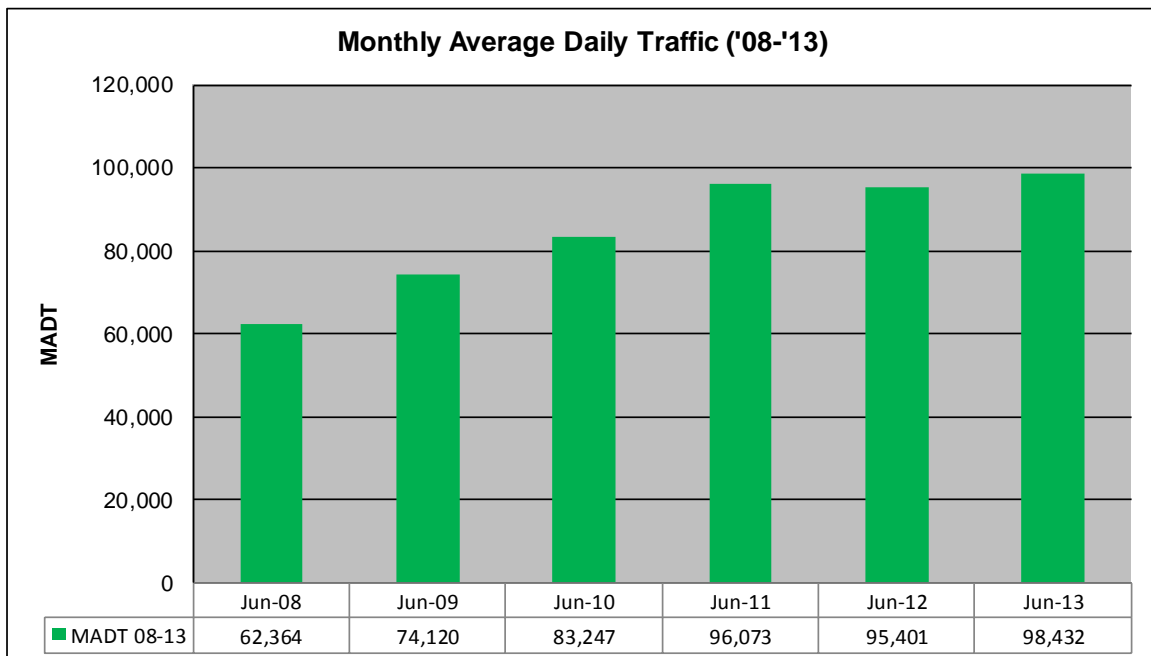
# MONTHLY REPORT, STATION NO. 329 (ATR)

## JUNE 2013

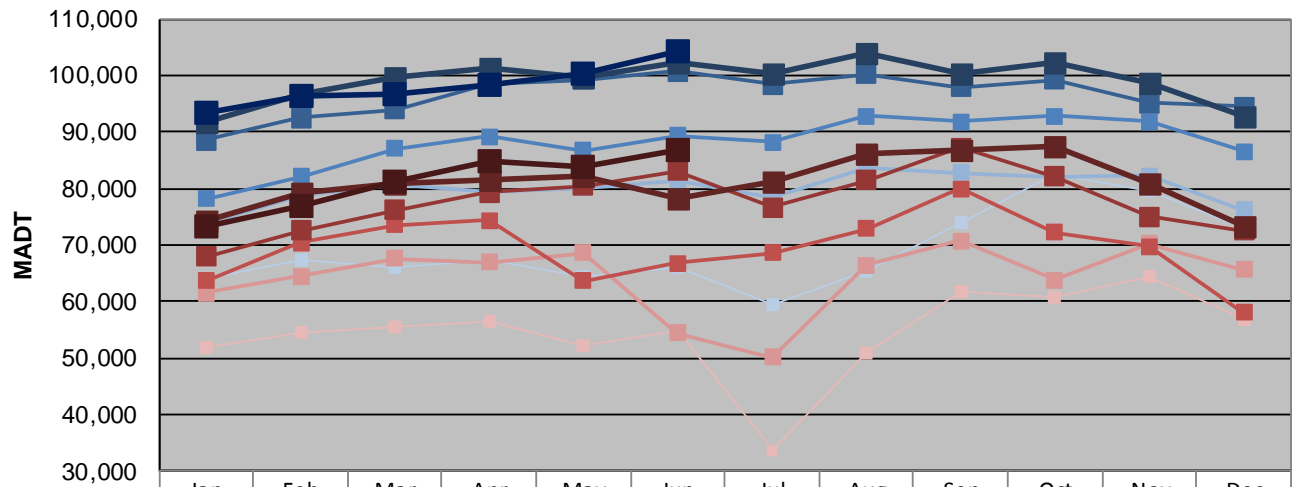
|   |                      |                                     |
|---|----------------------|-------------------------------------|
| <b>Station Measurement: VOLUME</b>                      |                      |                                     |
| Route: I-35W  | Route Direction: N/S | Lanes: 4                            |
| County: Hennepin  |                      | Closest City: Minneapolis           |
| Functional Class: Urban Principal Arterial - Interstate |                      |                                     |
| Location: AT FRANKLIN AVE IN MINNEAPOLIS                |                      |                                     |
| Ref Post: 016+00.680                                    | True Mile: 16.713    | Sequence No. 9851                   |
| <b>Volume: 2,952,968</b>                                |                      | <b>MADT: 98,432</b>                 |
| <b>Weekday (M-F) MADT: 104,238</b>                      |                      | <b>Weekend (Sa-Su) MADT: 86,820</b> |



Note: Decrease in traffic 2008 due to I-35W bridge collapse and construction on TH 62... Although traffic increased from August 2008 to December 2010, volumes were lower than expected due to construction on I-35W and TH 62



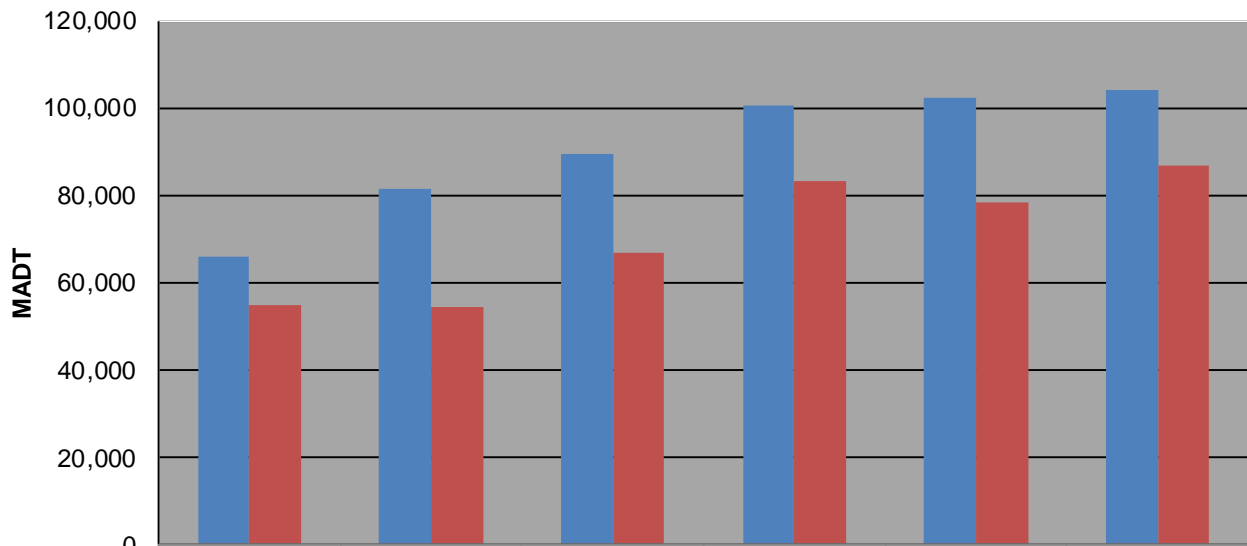
### Weekday (WD)/Weekend (WE) Monthly Average Daily Traffic



|        | Jan    | Feb    | Mar    | Apr     | May     | Jun     | Jul     | Aug     | Sep     | Oct     | Nov    | Dec    |
|--------|--------|--------|--------|---------|---------|---------|---------|---------|---------|---------|--------|--------|
| '08 WD | 64,032 | 67,314 | 66,120 | 67,232  | 64,390  | 65,908  | 59,580  | 65,396  | 73,858  | 82,598  | 79,432 | 73,054 |
| '08 WE | 51,788 | 54,398 | 55,402 | 56,508  | 52,156  | 54,712  | 33,592  | 50,722  | 61,686  | 60,640  | 64,382 | 56,834 |
| '09 WD | 73,624 | 78,856 | 80,656 | 79,486  | 80,108  | 81,476  | 78,416  | 83,572  | 82,682  | 82,000  | 82,248 | 76,098 |
| '09 WE | 61,414 | 64,382 | 67,556 | 66,998  | 68,620  | 54,458  | 50,160  | 66,456  | 70,740  | 63,792  | 70,142 | 65,614 |
| '10 WD | 78,096 | 82,048 | 86,962 | 89,154  | 86,764  | 89,258  | 88,106  | 92,770  | 91,742  | 92,876  | 91,866 | 86,482 |
| '10 WE | 63,564 | 70,390 | 73,548 | 74,326  | 63,606  | 66,826  | 68,514  | 72,936  | 79,972  | 72,130  | 69,724 | 58,100 |
| '11 WD | 88,592 | 92,444 | 93,910 | 98,328  | 99,206  | 100,688 | 98,396  | 100,272 | 97,848  | 99,206  | 95,070 | 94,480 |
| '11 WE | 67,902 | 72,578 | 76,222 | 79,264  | 80,366  | 83,088  | 76,702  | 81,358  | 87,258  | 82,124  | 75,080 | 72,466 |
| '12 WD | 91,808 | 96,530 | 99,654 | 101,172 | 99,716  | 102,386 | 100,406 | 103,910 | 100,274 | 102,284 | 98,708 | 92,600 |
| '12 WE | 74,406 | 79,324 | 80,722 | 81,398  | 82,036  | 78,102  | 81,100  | 86,106  | 86,724  | 87,338  | 80,724 | 73,322 |
| '13 WD | 93,434 | 96,456 | 96,588 | 98,236  | 100,370 | 104,238 |         |         |         |         |        |        |
| '13 WE | 73,206 | 76,828 | 81,260 | 84,934  | 83,728  | 86,820  |         |         |         |         |        |        |

Note: 'Weekday' defined as Monday-Friday, 'Weekend' defined as Saturday-Sunday

### Weekday/Weekend Monthly Average Daily Traffic ('08-'13)



|         | Jun-08 | Jun-09 | Jun-10 | Jun-11  | Jun-12  | Jun-13  |
|---------|--------|--------|--------|---------|---------|---------|
| Weekday | 65,908 | 81,476 | 89,258 | 100,688 | 102,386 | 104,238 |
| Weekend | 54,712 | 54,458 | 66,826 | 83,088  | 78,102  | 86,820  |