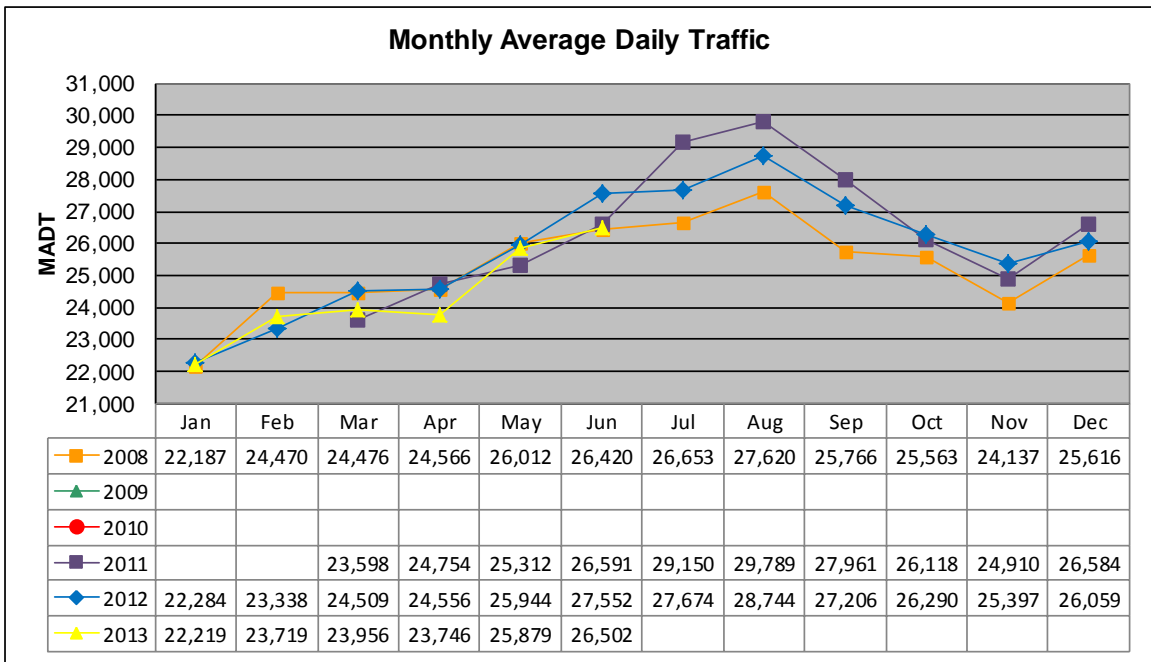


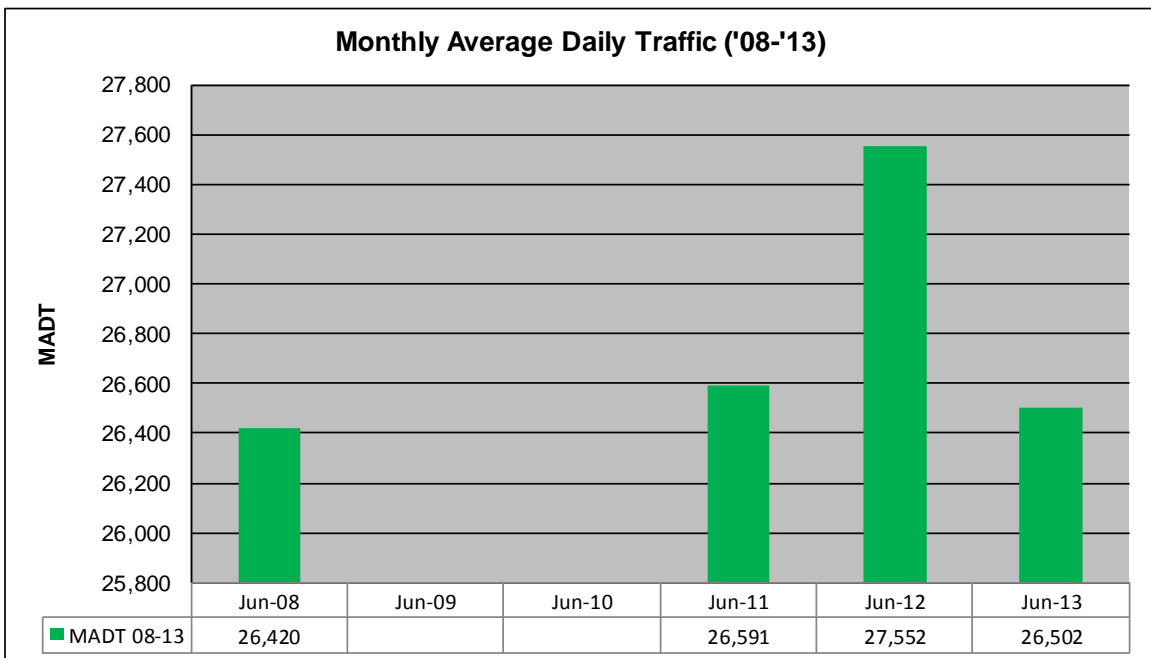
MONTHLY REPORT, STATION NO. 110 (ATR)

JUNE 2013

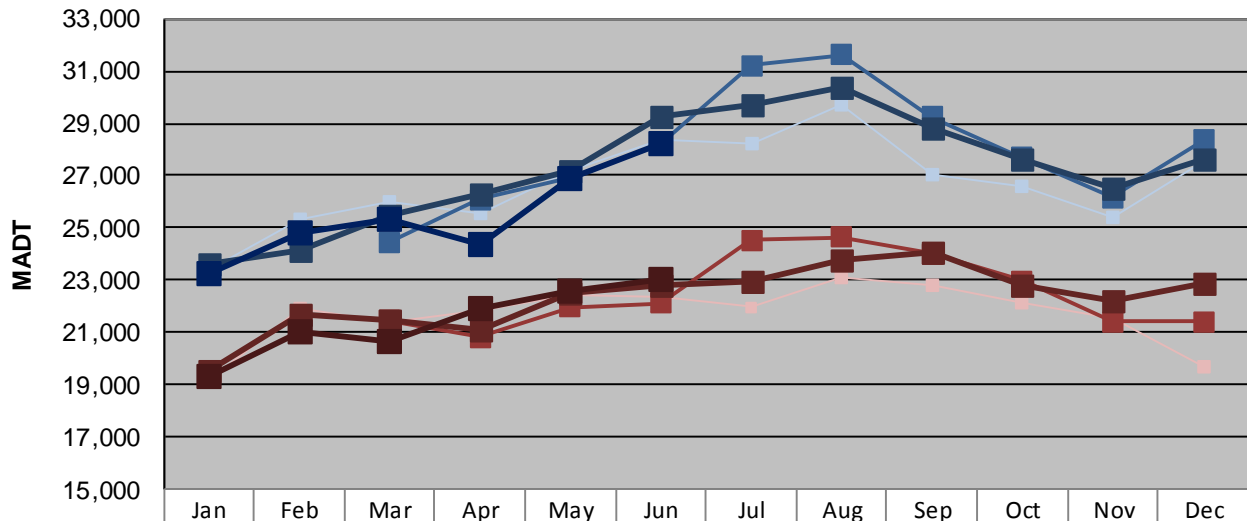
Station Measurement: VOLUME		
Route: TH 53	Route Direction: N/S	Lanes: 4
County: St Louis	Closest City: Duluth	
Functional Class: Urban Other Principal Arterial		
Location: SE OF CSAH6 (MAPLE GROVE RD) IN DULUTH		
Ref Post: 005+00.000	True Mile: 6.129	Sequence No. 9827
Volume: 795,067		MADT: 26,502
Weekday (M-F) MADT: 28,252		Weekend (Sa-Su) MADT: 23,004



Note: No data January 2009 to February 2011 due to sensors destroyed by construction



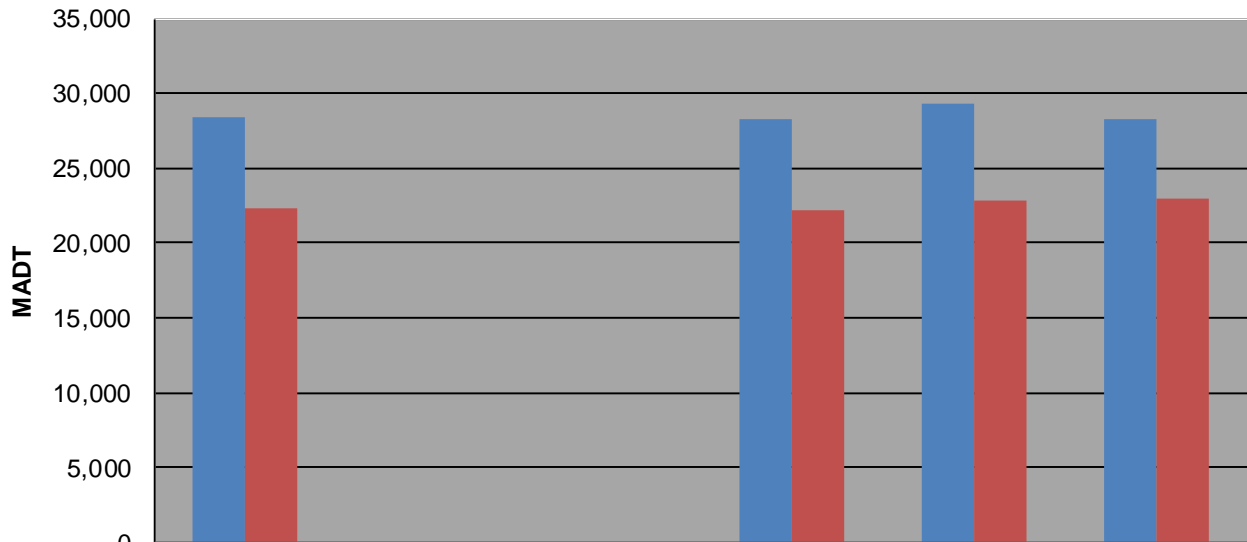
Weekday (WD)/Weekend (WE) Monthly Average Daily Traffic



	Jan	Feb	Mar	Apr	May	Jun	Jul	Aug	Sep	Oct	Nov	Dec
'08 WD	23,372	25,298	26,014	25,540	27,192	28,360	28,236	29,678	27,016	26,626	25,430	27,556
'08 WE	19,146	21,936	21,380	21,834	22,418	22,382	21,972	23,116	22,774	22,176	21,550	19,710
'09 WD												
'09 WE												
'10 WD												
'10 WE												
'11 WD			24,442	26,078	26,914	28,220	31,214	31,618	29,224	27,690	26,170	28,352
'11 WE			21,462	20,822	21,980	22,136	24,544	24,660	24,016	22,956	21,422	21,420
'12 WD	23,632	24,120	25,494	26,276	27,158	29,258	29,718	30,394	28,780	27,664	26,524	27,662
'12 WE	19,536	21,706	21,474	21,136	22,510	22,798	22,988	23,756	24,058	22,784	22,184	22,884
'13 WD	23,276	24,804	25,332	24,360	26,868	28,252						
'13 WE	19,322	21,012	20,654	21,928	22,556	23,004						

Note: 'Weekday' defined as Monday-Friday, 'Weekend' defined as Saturday-Sunday

Weekday/Weekend Monthly Average Daily Traffic ('08-'13)



	Jun-08	Jun-09	Jun-10	Jun-11	Jun-12	Jun-13
Weekday	28,360			28,220	29,258	28,252
Weekend	22,382			22,136	22,798	23,004