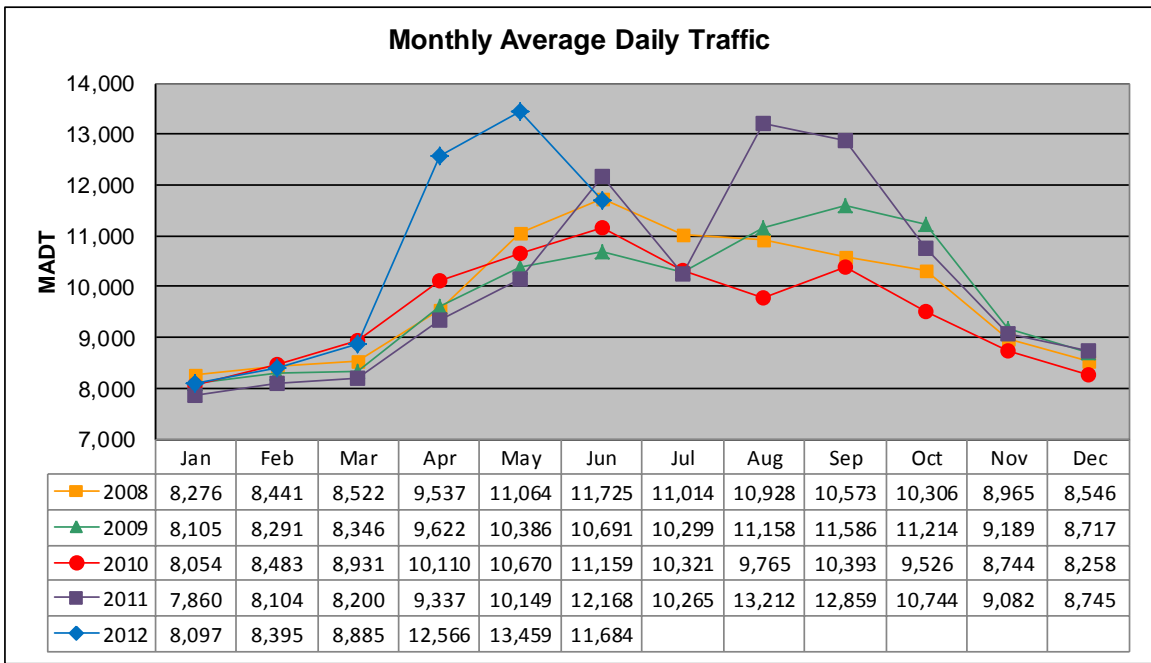


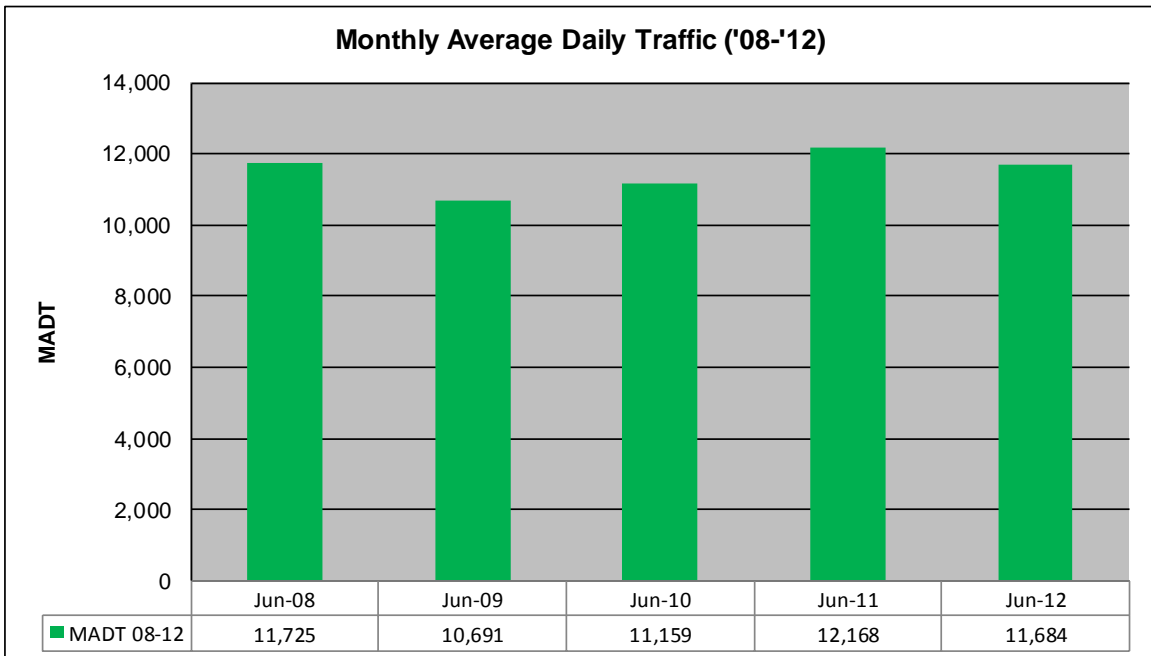
MONTHLY REPORT, STATION NO. 390 (ATR)

JUNE 2012

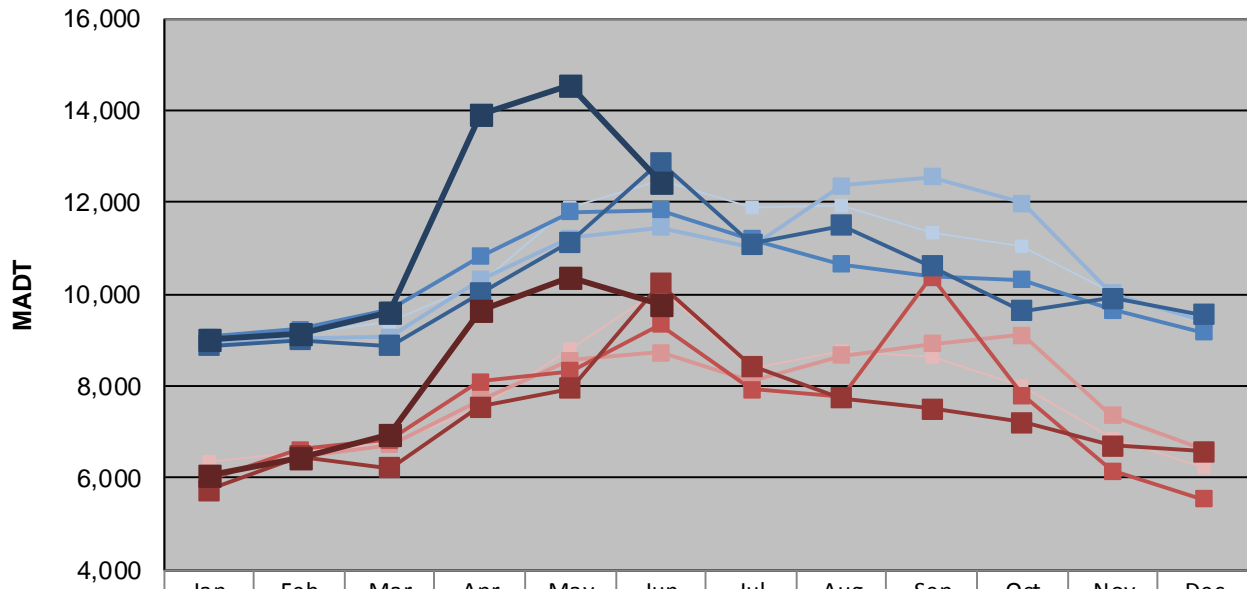
Station Measurement: VOLUME/SPEED		
Route: TH 61	Route Direction: N/S	Lanes: 2
County: Washington		Closest City: Hugo
Functional Class: Urban Minor Arterial		
Location: .9 MI N OF CSAH8 IN HUGO		
Ref Post: 153+00.300	True Mile: 153.097	Sequence No. 9878
Volume: 350,530		MADT: 11,684
Weekday (M-F) MADT: 12,422		Weekend (Sa-Su) MADT: 9,776



Note: Increase in traffic June/August/September 2011 and April/May 2012 due to detour from I-35E... Decrease in traffic August/September 2010 due to construction on TH 61



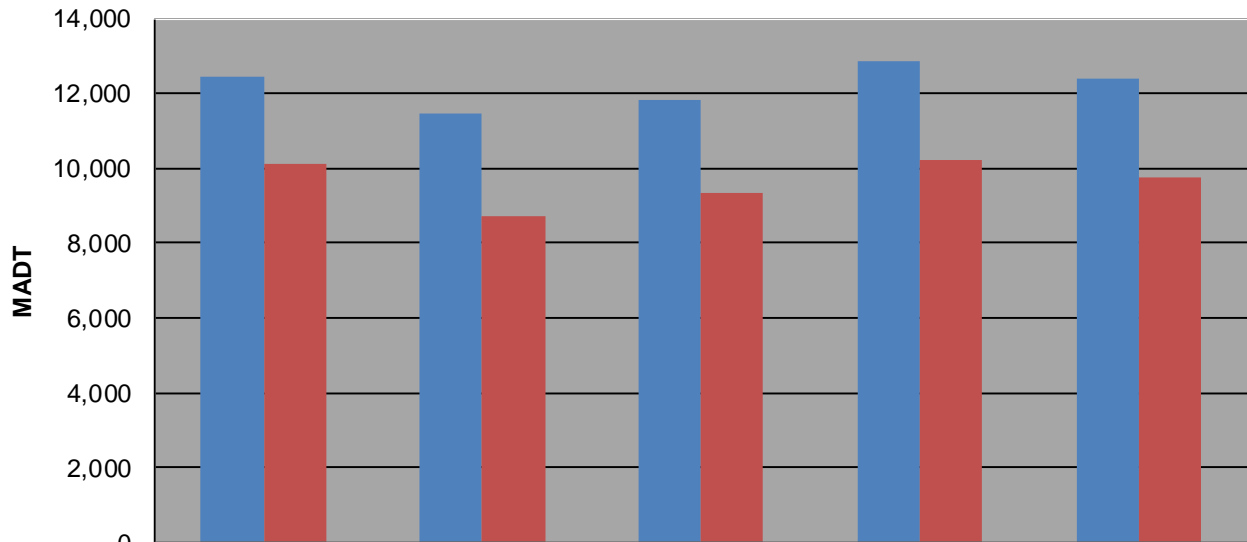
Weekday (WD)/Weekend (WE) Monthly Average Daily Traffic



	Jan	Feb	Mar	Apr	May	Jun	Jul	Aug	Sep	Oct	Nov	Dec
'08 WD	8,976	9,134	9,388	10,250	11,896	12,468	11,896	11,936	11,334	11,062	10,012	9,344
'08 WE	6,338	6,558	6,754	7,536	8,818	10,110	8,388	8,760	8,648	8,018	6,874	6,216
'09 WD	8,920	9,030	9,078	10,314	11,224	11,444	11,034	12,356	12,558	11,974	10,008	9,434
'09 WE	6,066	6,448	6,728	7,704	8,560	8,730	8,092	8,664	8,928	9,106	7,350	6,610
'10 WD	9,072	9,230	9,670	10,814	11,796	11,838	11,204	10,648	10,384	10,306	9,670	9,184
'10 WE	5,974	6,616	6,840	8,100	8,338	9,348	7,936	7,752	10,374	7,794	6,150	5,544
'11 WD	8,884	9,004	8,882	10,020	11,134	12,866	11,088	11,486	10,620	9,640	9,910	9,550
'11 WE	5,732	6,470	6,222	7,558	7,956	10,226	8,432	7,748	7,508	7,218	6,700	6,572
'12 WD	9,008	9,152	9,620	13,896	14,530	12,422						
'12 WE	6,060	6,436	6,930	9,662	10,360	9,776						

Note: 'Weekday' defined as Monday-Friday, 'Weekend' defined as Saturday-Sunday

Weekday/Weekend Monthly Average Daily Traffic ('08-'12)



	Jun-08	Jun-09	Jun-10	Jun-11	Jun-12
Weekday	12,468	11,444	11,838	12,866	12,422
Weekend	10,110	8,730	9,348	10,226	9,776