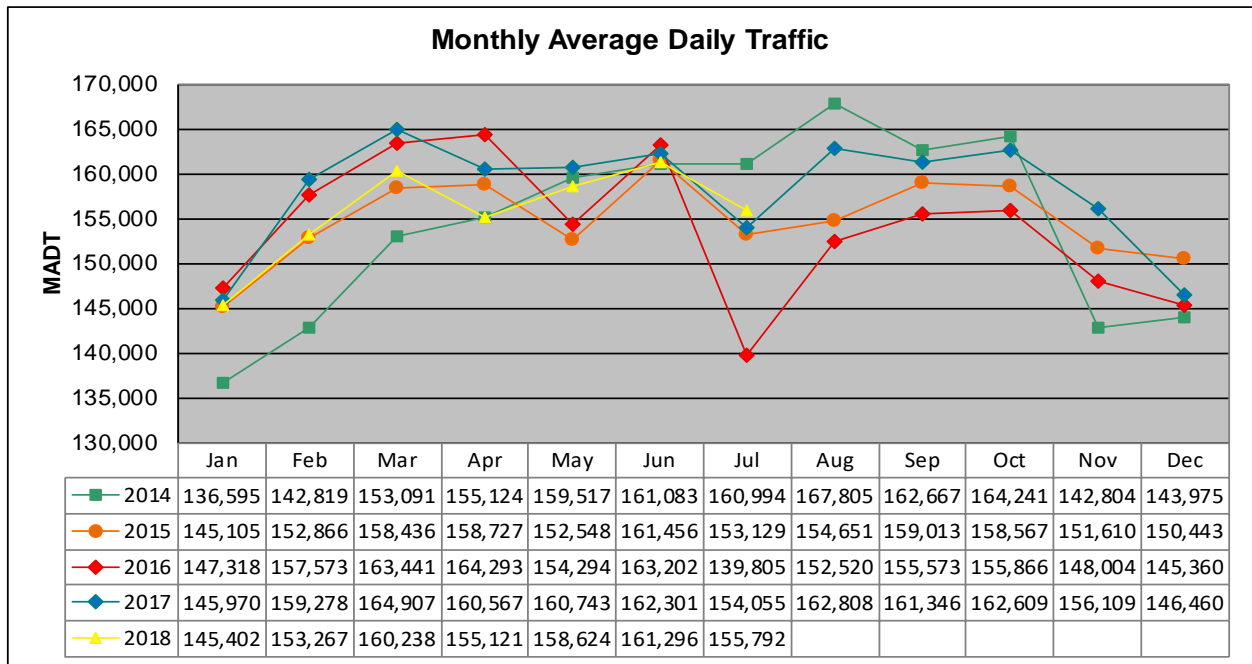


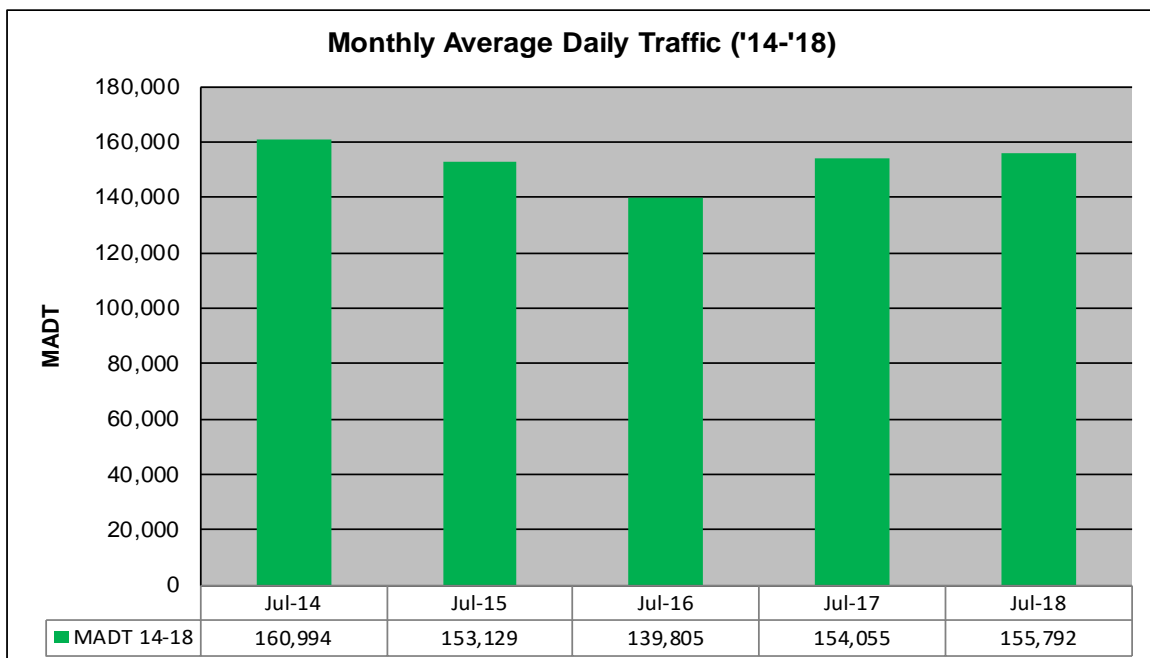
MONTHLY REPORT, STATION NO. 301 (ATR)

JULY 2018

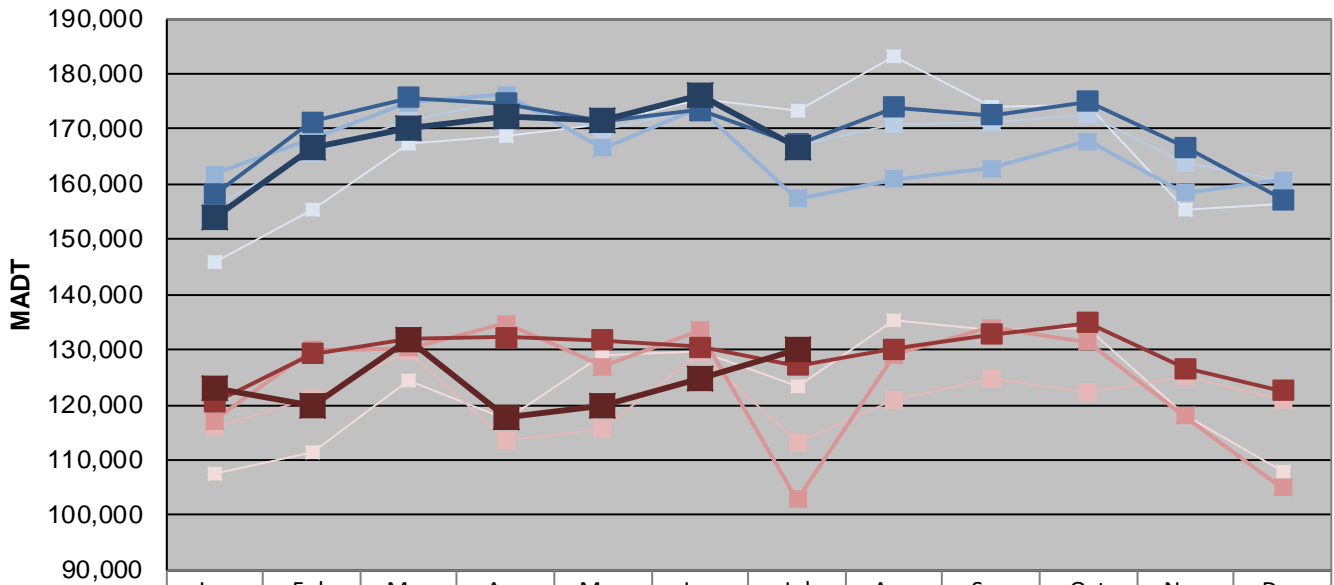
| | | |
|---|----------------------|--------------------------------------|
| Station Measurement: VOLUME | | |
| Route: I-94 | Route Direction: E/W | Lanes: 8 |
| County: Ramsey | | Closest City: St Paul |
| Functional Class: Urban Principal Arterial - Interstate | | |
| Location: W OF N VICTORIA ST IN ST PAUL | | |
| Ref Post: 239+00.922 | True Mile: 240.541 | Sequence No. 9834 |
| Volume: 4,829,538 | | MADT: 155,792 |
| Weekday (M-F) MADT: 166,524 | | Weekend (Sa-Su) MADT: 130,180 |



Note: Decrease in traffic July 2016 due to construction on I-94



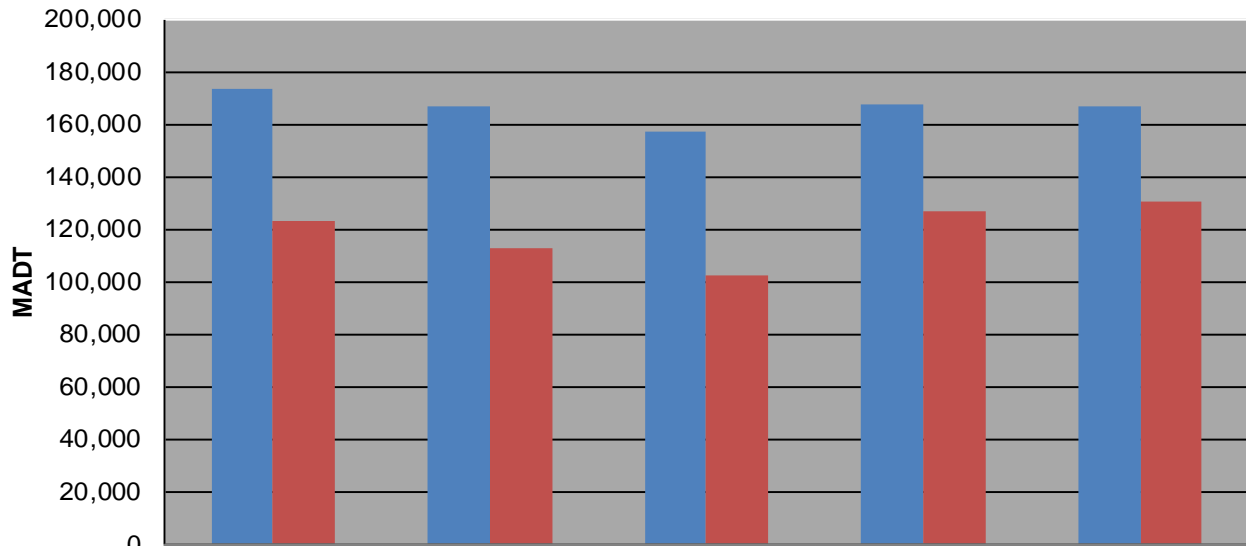
Weekday (WD)/Weekend (WE) Monthly Average Daily Traffic



| | Jan | Feb | Mar | Apr | May | Jun | Jul | Aug | Sep | Oct | Nov | Dec |
|--------|---------|---------|---------|---------|---------|---------|---------|---------|---------|---------|---------|---------|
| '14 WD | 145,928 | 155,374 | 167,166 | 168,764 | 170,804 | 175,314 | 173,306 | 183,102 | 173,866 | 174,276 | 155,224 | 156,364 |
| '14 WE | 107,526 | 111,430 | 124,438 | 117,370 | 128,850 | 129,720 | 123,482 | 135,208 | 133,644 | 133,998 | 117,962 | 107,844 |
| '15 WD | 156,246 | 165,558 | 171,592 | 174,928 | 169,736 | 173,544 | 166,840 | 170,954 | 171,216 | 172,488 | 163,892 | 160,510 |
| '15 WE | 116,122 | 121,134 | 129,744 | 113,502 | 115,670 | 129,186 | 113,058 | 121,006 | 124,634 | 122,134 | 124,990 | 120,762 |
| '16 WD | 161,828 | 168,380 | 174,814 | 176,260 | 166,488 | 173,768 | 157,358 | 160,966 | 162,802 | 167,854 | 158,458 | 160,762 |
| '16 WE | 117,150 | 130,026 | 130,322 | 134,708 | 127,036 | 133,472 | 102,776 | 129,082 | 134,030 | 131,426 | 117,958 | 104,980 |
| '17 WD | 158,104 | 171,306 | 175,766 | 174,702 | 171,550 | 173,440 | 167,300 | 173,998 | 172,554 | 174,946 | 166,694 | 157,186 |
| '17 WE | 120,406 | 129,212 | 132,146 | 132,296 | 131,768 | 130,532 | 127,140 | 130,134 | 132,842 | 134,810 | 126,592 | 122,580 |
| '18 WD | 154,006 | 166,664 | 170,322 | 172,156 | 171,568 | 176,226 | 166,524 | | | | | |
| '18 WE | 123,072 | 119,774 | 131,758 | 117,810 | 119,724 | 124,804 | 130,180 | | | | | |

Note: 'Weekday' defined as Monday-Friday, 'Weekend' defined as Saturday-Sunday

Weekday/Weekend Monthly Average Daily Traffic ('14-'18)



| | Jul-14 | Jul-15 | Jul-16 | Jul-17 | Jul-18 |
|---------|---------|---------|---------|---------|---------|
| Weekday | 173,306 | 166,840 | 157,358 | 167,300 | 166,524 |
| Weekend | 123,482 | 113,058 | 102,776 | 127,140 | 130,180 |