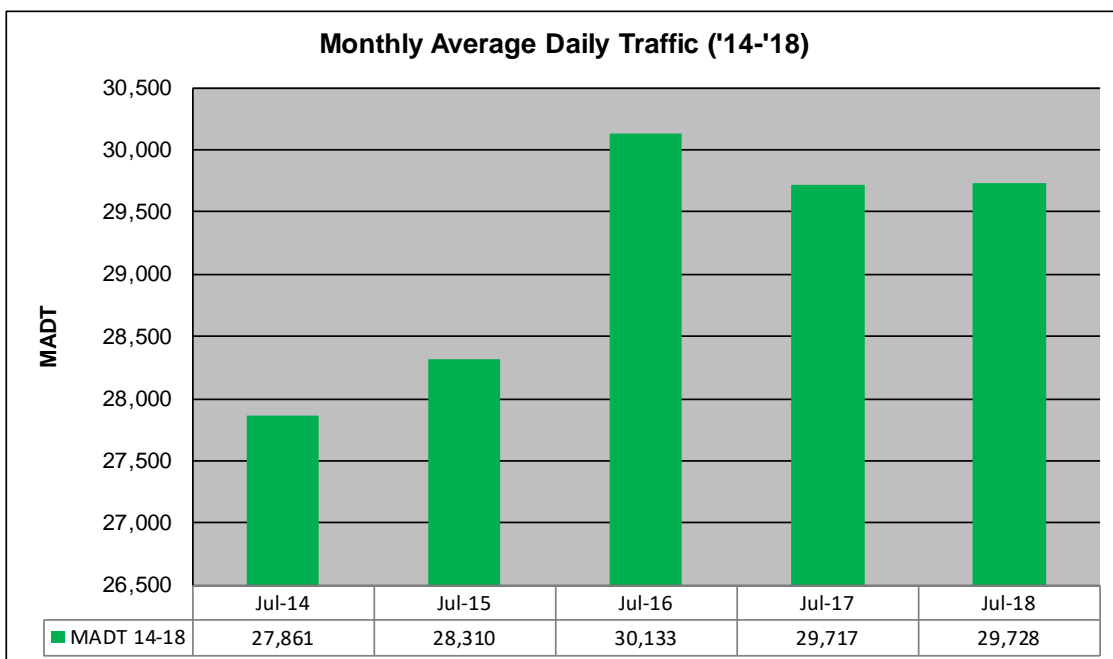
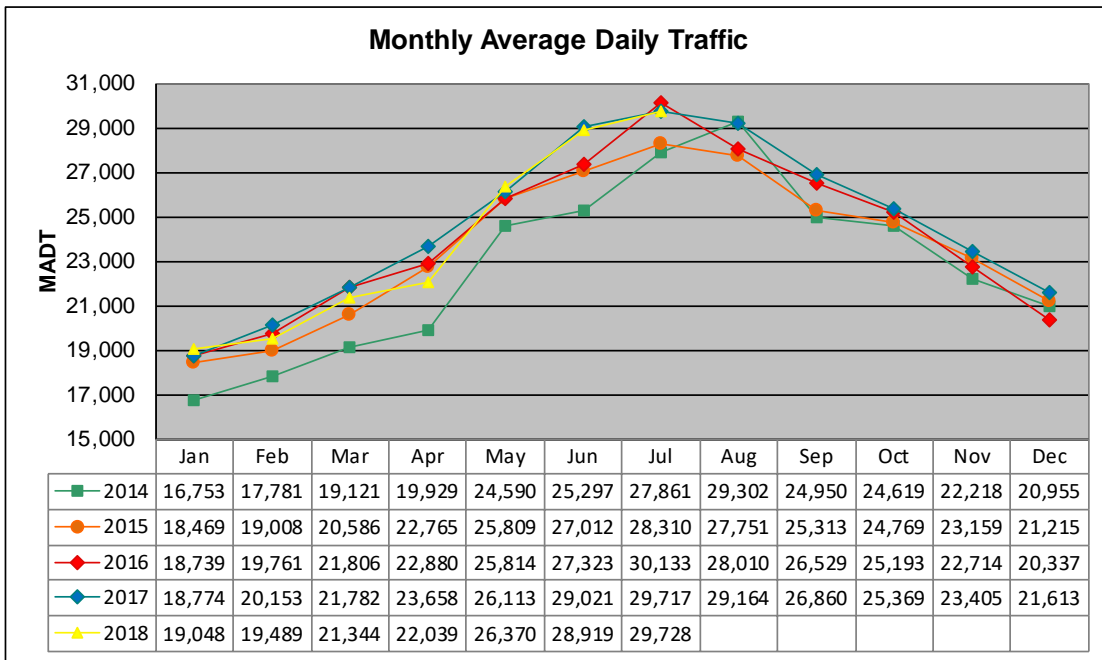


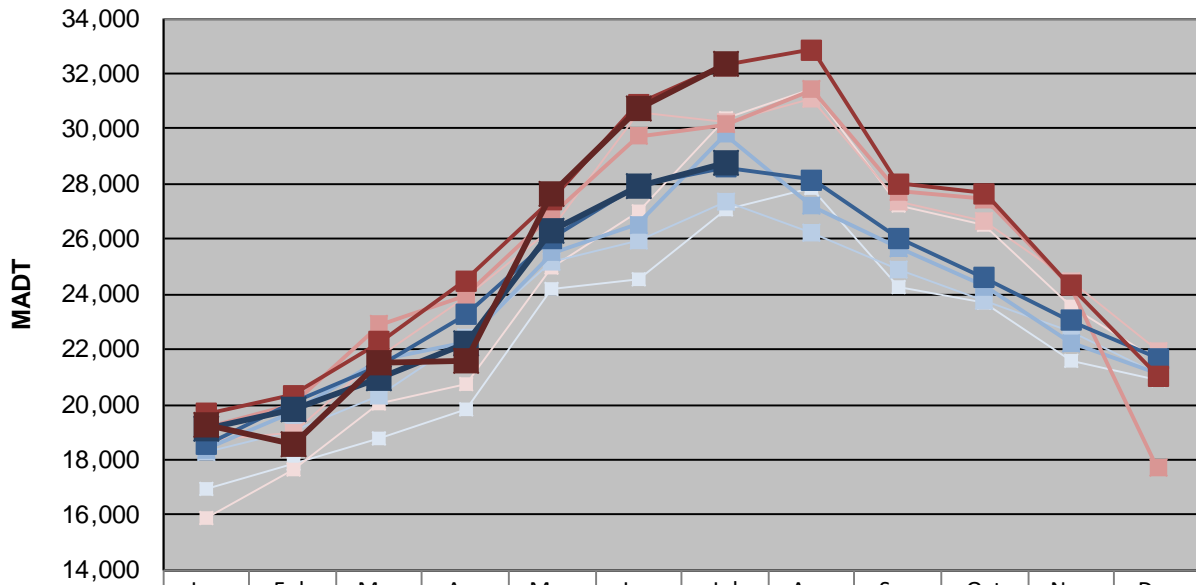
# MONTHLY REPORT, STATION NO. 175 (ATR)

## JULY 2018

|                                                         |                      |                                     |
|---------------------------------------------------------|----------------------|-------------------------------------|
| Station Measurement: VOLUME/SPEED/CLASS                 |                      |                                     |
| Route: I-94                                             | Route Direction: E/W | Lanes: 4                            |
| County: Stearns                                         |                      | Closest City: Sauk Centre           |
| Functional Class: Rural Principal Arterial - Interstate |                      |                                     |
| Location: E OF CR186, SE OF SAUK CENTRE                 |                      |                                     |
| Ref Post: 128+00.640                                    | True Mile: 129       | Sequence No. 6776                   |
| <b>Volume: 921,561</b>                                  |                      | <b>MADT: 29,728</b>                 |
| <b>Weekday (M-F) MADT: 28,742</b>                       |                      | <b>Weekend (Sa-Su) MADT: 32,350</b> |



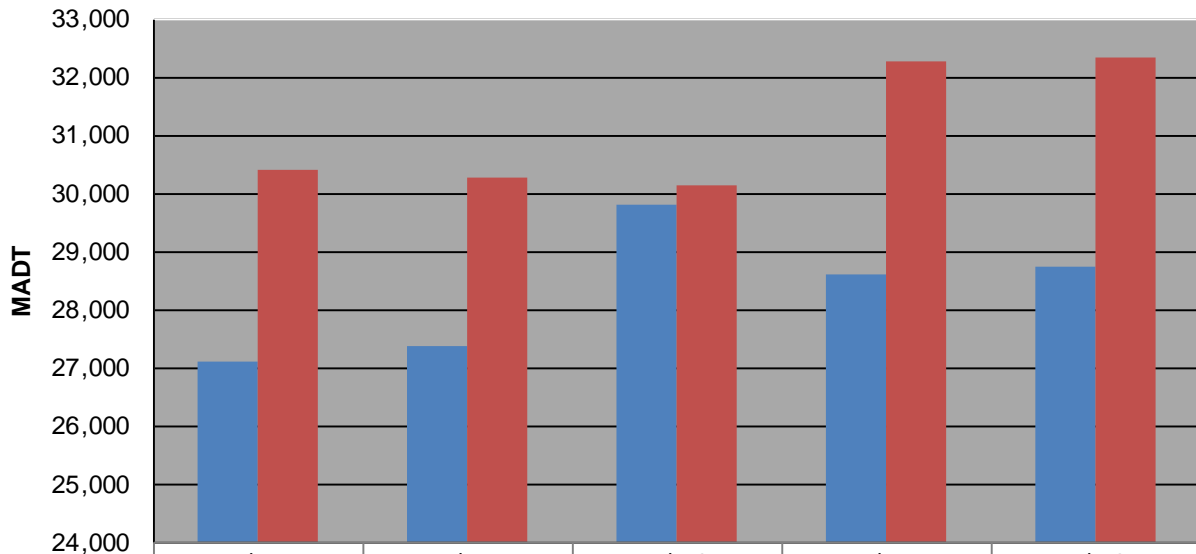
### Weekday (WD)/Weekend (WE) Monthly Average Daily Traffic



|        | Jan    | Feb    | Mar    | Apr    | May    | Jun    | Jul    | Aug    | Sep    | Oct    | Nov    | Dec    |
|--------|--------|--------|--------|--------|--------|--------|--------|--------|--------|--------|--------|--------|
| '14 WD | 16,916 | 17,828 | 18,768 | 19,840 | 24,224 | 24,522 | 27,100 | 27,860 | 24,264 | 23,718 | 21,560 | 20,904 |
| '14 WE | 15,870 | 17,664 | 20,030 | 20,732 | 24,936 | 27,016 | 30,400 | 31,446 | 27,208 | 26,536 | 23,532 | 21,608 |
| '15 WD | 18,252 | 19,018 | 20,290 | 22,430 | 25,144 | 25,952 | 27,380 | 26,262 | 24,926 | 23,778 | 22,666 | 21,070 |
| '15 WE | 18,682 | 18,984 | 21,726 | 23,900 | 26,392 | 30,604 | 30,262 | 31,070 | 27,370 | 26,656 | 24,446 | 21,972 |
| '16 WD | 18,352 | 19,734 | 21,632 | 22,220 | 25,506 | 26,518 | 29,818 | 27,196 | 25,692 | 24,268 | 22,252 | 21,102 |
| '16 WE | 19,182 | 19,988 | 22,906 | 23,938 | 26,924 | 29,736 | 30,152 | 31,404 | 27,738 | 27,428 | 24,298 | 17,706 |
| '17 WD | 18,530 | 20,082 | 21,418 | 23,248 | 26,020 | 27,938 | 28,602 | 28,152 | 26,020 | 24,596 | 23,054 | 21,664 |
| '17 WE | 19,668 | 20,330 | 22,258 | 24,482 | 27,428 | 30,908 | 32,286 | 32,860 | 28,002 | 27,640 | 24,300 | 21,030 |
| '18 WD | 19,126 | 19,856 | 20,978 | 22,210 | 26,276 | 27,884 | 28,742 |        |        |        |        |        |
| '18 WE | 19,260 | 18,574 | 21,500 | 21,562 | 27,644 | 30,722 | 32,350 |        |        |        |        |        |

Note: 'Weekday' defined as Monday-Friday, 'Weekend' defined as Saturday-Sunday

### Weekday/Weekend Monthly Average Daily Traffic ('14-'18)



|         | Jul-14 | Jul-15 | Jul-16 | Jul-17 | Jul-18 |
|---------|--------|--------|--------|--------|--------|
| Weekday | 27,100 | 27,380 | 29,818 | 28,602 | 28,742 |
| Weekend | 30,400 | 30,262 | 30,152 | 32,286 | 32,350 |