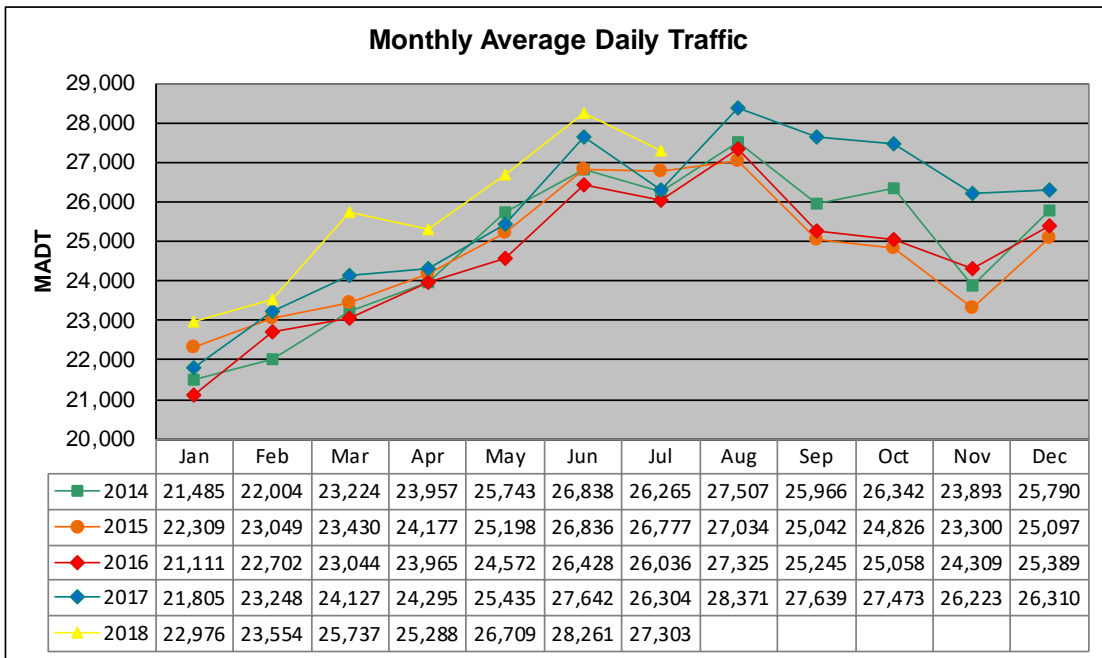


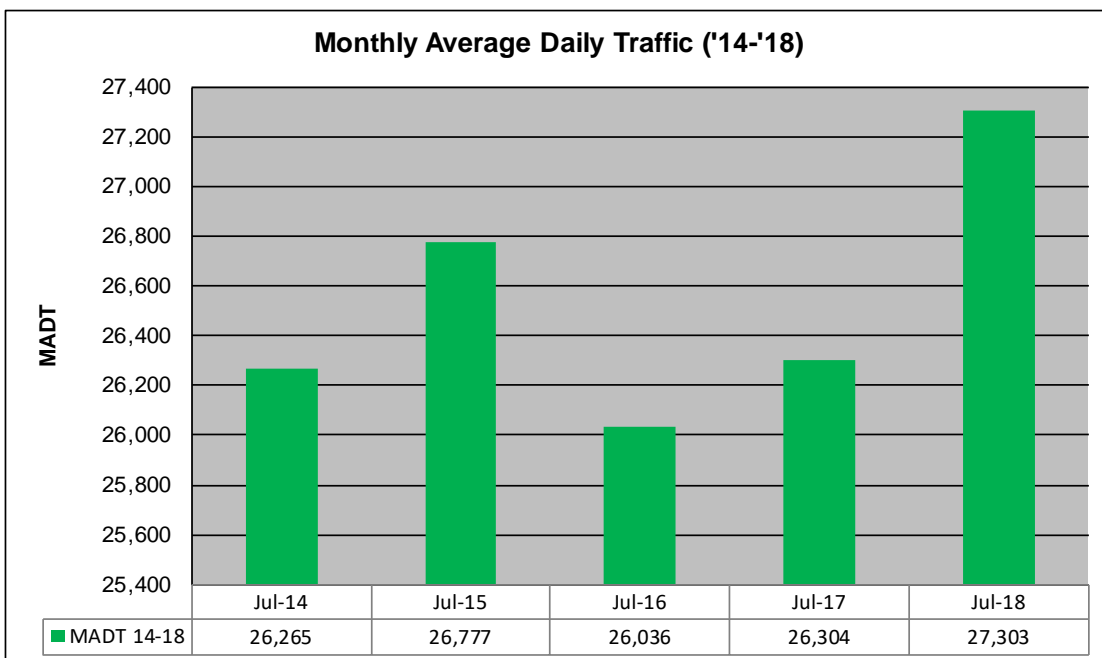
MONTHLY REPORT, STATION NO. 110 (ATR)

JULY 2018

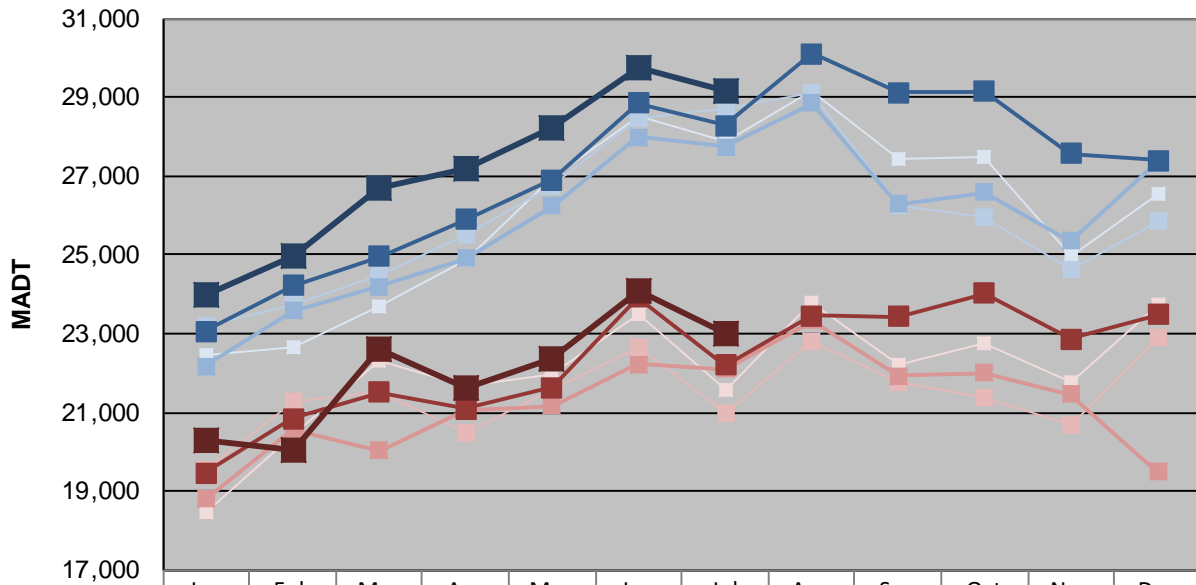
Station Measurement: VOLUME		
Route: TH 53	Route Direction: N/S	Lanes: 4
County: St Louis	Closest City: Duluth	
Functional Class: Urban Other Principal Arterial		
Location: SE OF CSAH6 (MAPLE GROVE RD) IN DULUTH		
Ref Post: 005+00.000	True Mile: 6.129	Sequence No. 9827
Volume: 846,398		MADT: 27,303
Weekday (M-F) MADT: 29,156		Weekend (Sa-Su) MADT: 23,018



Note: Increase in traffic beginning August 2017 due to the completion of the Highway 53 Relocation Project



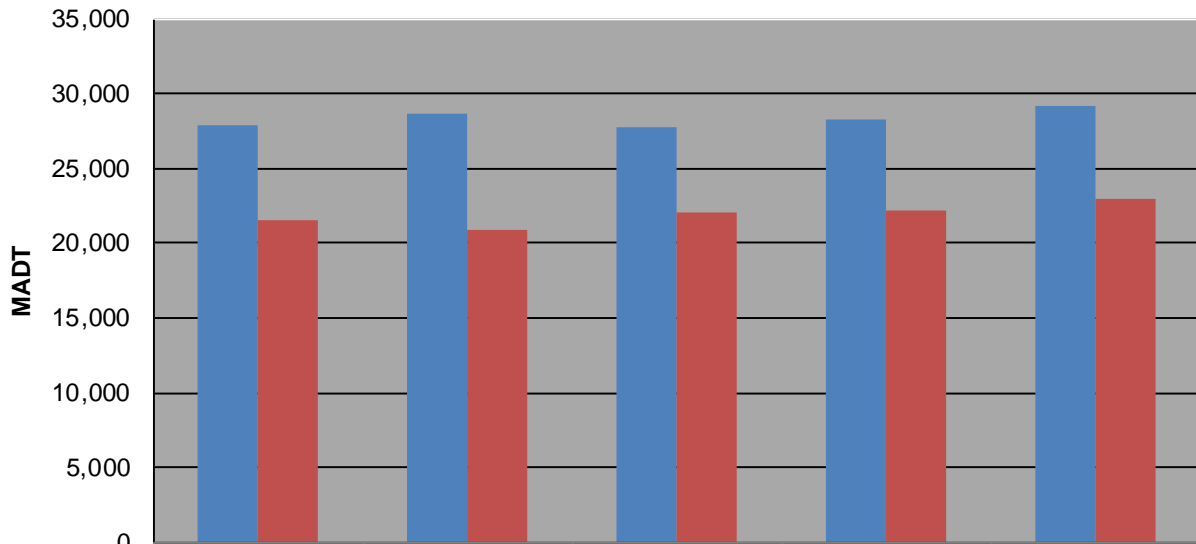
Weekday (WD)/Weekend (WE) Monthly Average Daily Traffic



	Jan	Feb	Mar	Apr	May	Jun	Jul	Aug	Sep	Oct	Nov	Dec
'14 WD	22,440	22,636	23,668	24,858	26,958	28,496	27,864	29,156	27,448	27,488	24,950	26,526
'14 WE	18,486	20,428	22,322	21,666	21,986	23,498	21,562	23,786	22,210	22,738	21,782	23,718
'15 WD	23,212	23,760	24,462	25,534	26,760	28,460	28,724	29,090	26,250	25,934	24,636	25,876
'15 WE	19,546	21,272	21,506	20,504	21,592	22,644	20,958	22,782	21,788	21,380	20,670	22,912
'16 WD	22,174	23,578	24,182	24,904	26,230	27,978	27,750	28,842	26,294	26,590	25,354	27,338
'16 WE	18,800	20,576	20,032	21,054	21,156	22,228	22,092	23,328	21,938	22,004	21,454	19,478
'17 WD	23,068	24,214	24,954	25,898	26,904	28,852	28,286	30,106	29,128	29,136	27,576	27,398
'17 WE	19,454	20,836	21,520	21,092	21,644	23,918	22,204	23,460	23,434	24,018	22,862	23,488
'18 WD	24,004	24,962	26,710	27,170	28,202	29,754	29,156					
'18 WE	20,272	20,034	22,600	21,638	22,368	24,102	23,018					

Note: 'Weekday' defined as Monday-Friday, 'Weekend' defined as Saturday-Sunday

Weekday/Weekend Monthly Average Daily Traffic ('14-'18)



	Jul-14	Jul-15	Jul-16	Jul-17	Jul-18
Weekday	27,864	28,724	27,750	28,286	29,156
Weekend	21,562	20,958	22,092	22,204	23,018