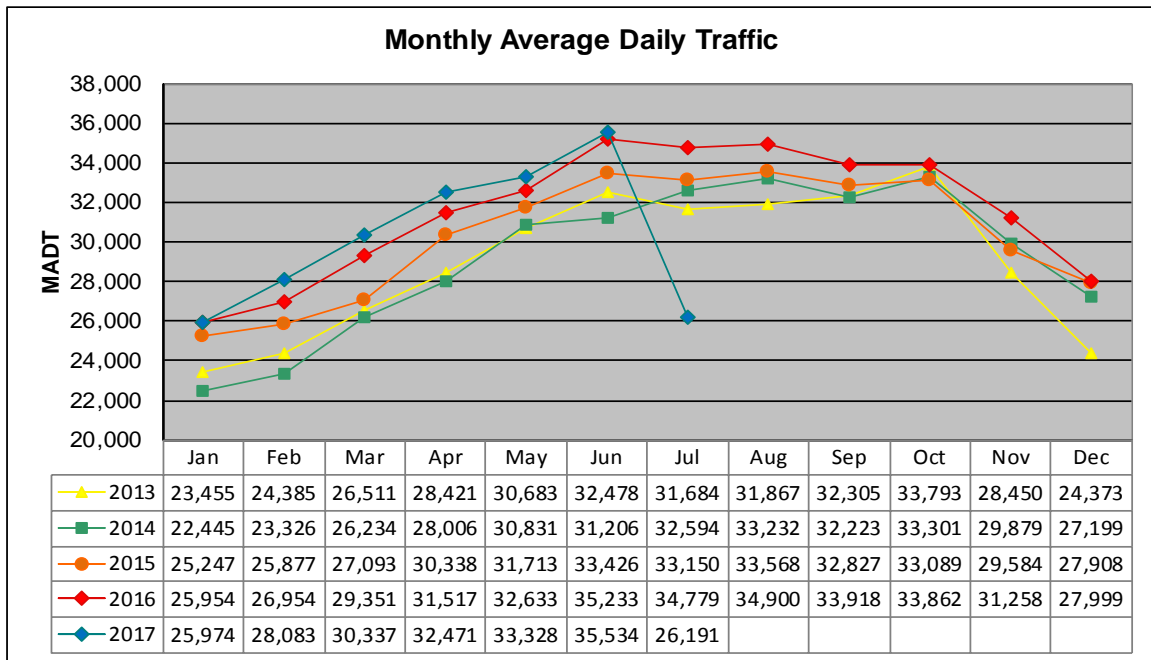


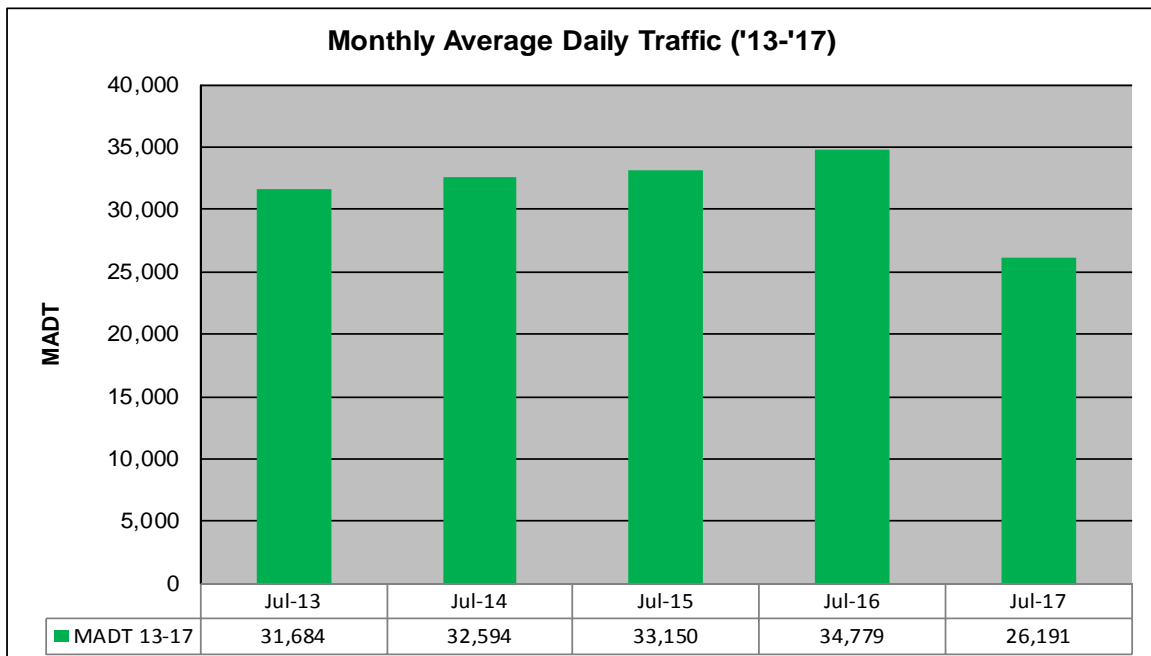
MONTHLY REPORT, STATION NO. 382 (ATR)

JULY 2017

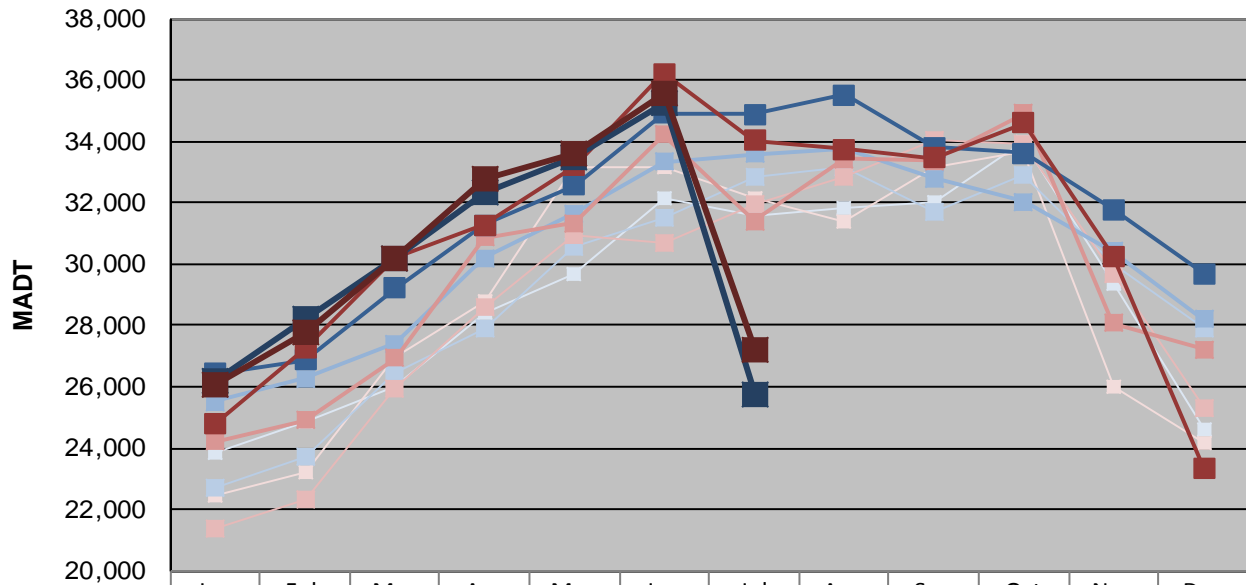
Station Measurement: VOLUME/SPEED/CLASS		
Route: TH 52	Route Direction: N/S	Lanes: 4
County: Dakota		Closest City: Coates
Functional Class: Rural Principal Arterial - Other		
Location: N OF 180TH ST E, S OF COATES		
Ref Post: 111+00.966	True Mile: 112.328	Sequence No. 9871
Volume: 811,925		MADT: 26,191
Weekday (M-F) MADT: 25,744		Weekend (Sa-Su) MADT: 27,176



Note: Increase in traffic September to November 2013 and July/August/October/November 2014 due to detour from TH 3... Decrease in traffic July 2017 due to construction on TH 52



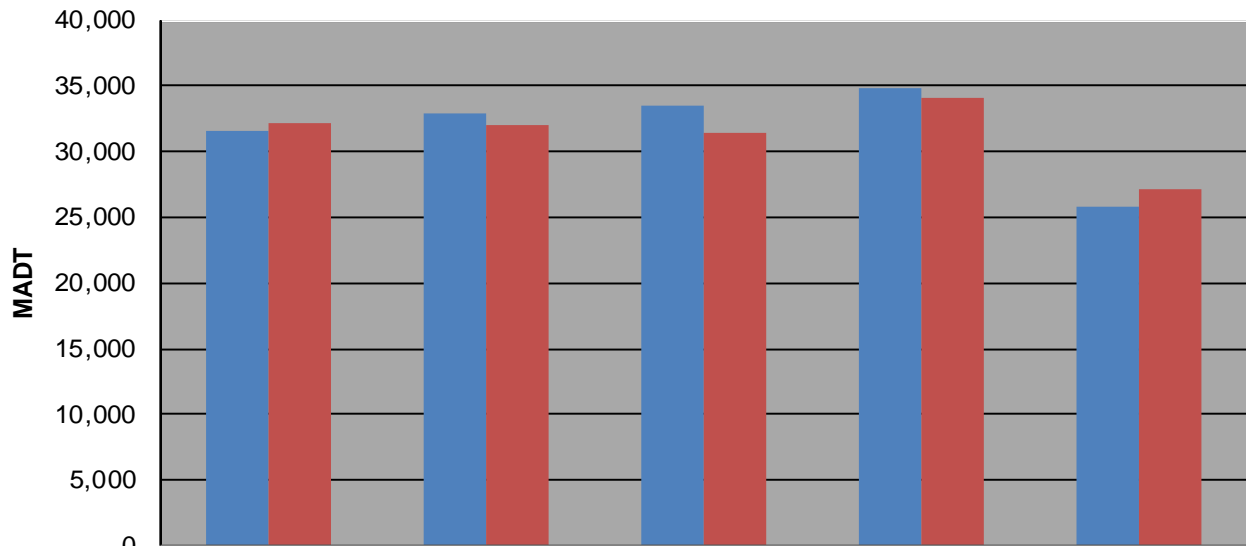
Weekday (WD)/Weekend (WE) Monthly Average Daily Traffic



	Jan	Feb	Mar	Apr	May	Jun	Jul	Aug	Sep	Oct	Nov	Dec
'13 WD	23,878	24,844	26,000	28,386	29,690	32,142	31,600	31,858	32,046	33,954	29,380	24,588
'13 WE	22,482	23,240	26,982	28,778	33,130	33,150	32,158	31,360	33,138	33,658	25,986	24,156
'14 WD	22,682	23,712	26,464	27,906	30,548	31,534	32,858	33,178	31,724	32,884	29,970	27,902
'14 WE	21,382	22,362	25,946	28,616	30,936	30,712	31,974	32,844	34,018	33,924	29,698	25,290
'15 WD	25,520	26,260	27,426	30,184	31,662	33,334	33,574	33,744	32,810	32,048	30,418	28,212
'15 WE	24,230	24,918	26,944	30,854	31,342	34,210	31,408	33,438	33,350	34,906	28,090	27,210
'16 WD	26,438	26,878	29,228	31,288	32,584	34,904	34,884	35,522	33,798	33,634	31,778	29,700
'16 WE	24,782	27,256	30,220	31,290	33,216	36,228	34,022	33,760	33,448	34,610	30,262	23,352
'17 WD	26,220	28,210	30,200	32,308	33,508	35,280	25,744					
'17 WE	26,062	27,766	30,210	32,796	33,588	35,552	27,176					

Note: 'Weekday' defined as Monday-Friday, 'Weekend' defined as Saturday-Sunday

Weekday/Weekend Monthly Average Daily Traffic ('13-'17)



	Jul-13	Jul-14	Jul-15	Jul-16	Jul-17
Weekday	31,600	32,858	33,574	34,884	25,744
Weekend	32,158	31,974	31,408	34,022	27,176