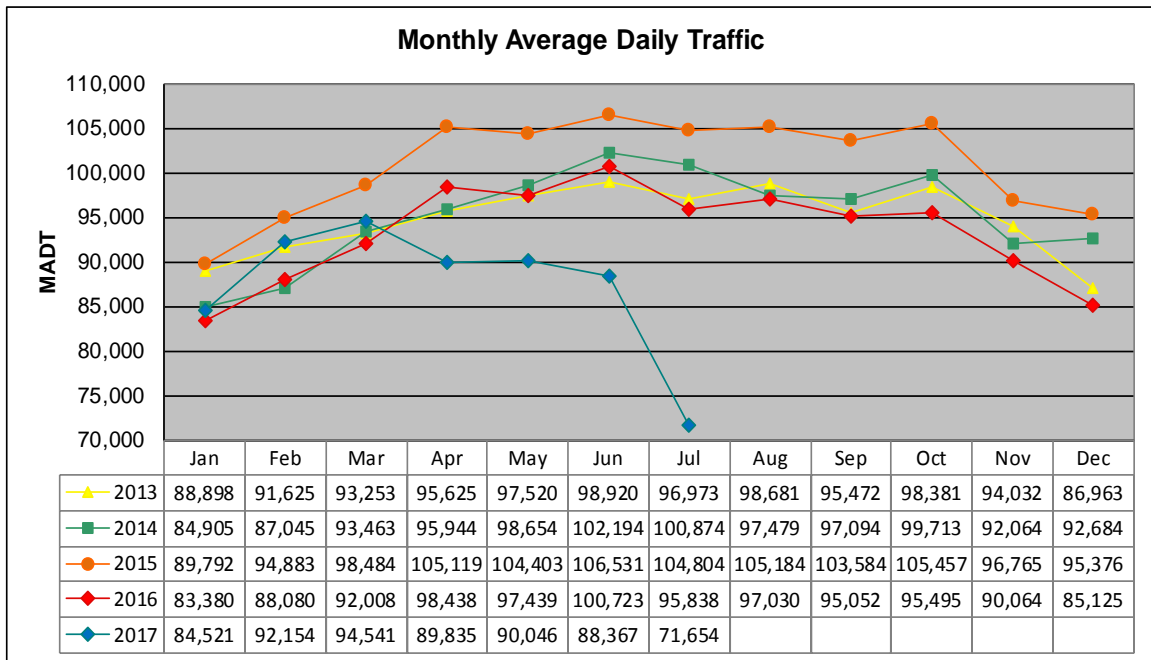


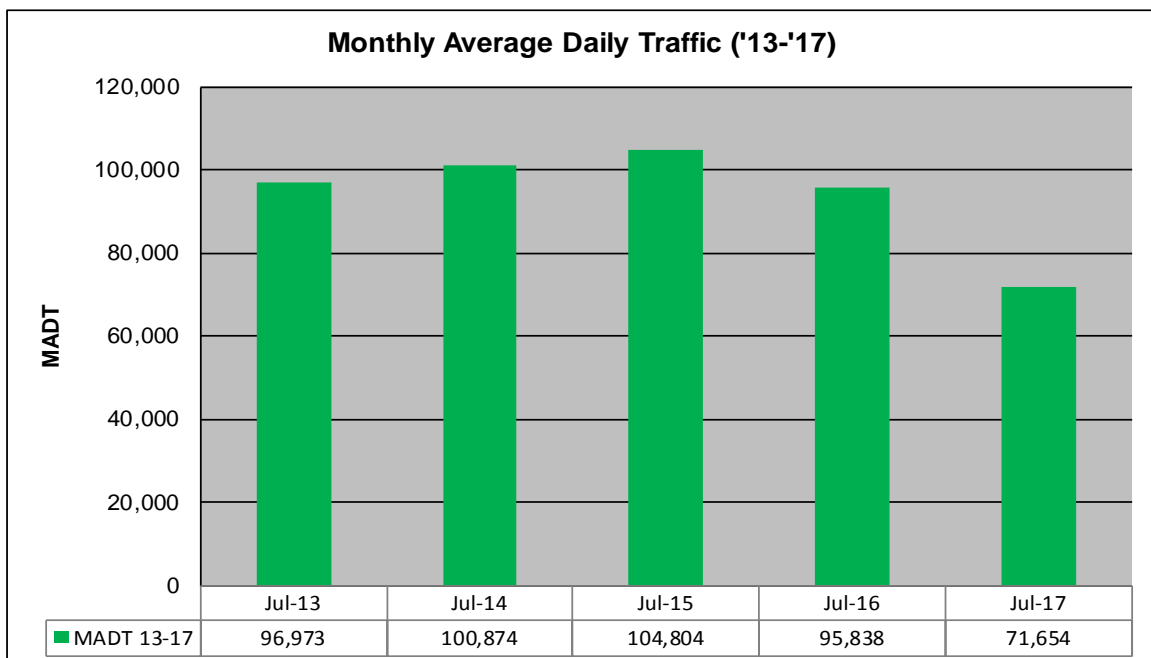
MONTHLY REPORT, STATION NO. 309 (ATR)

JULY 2017

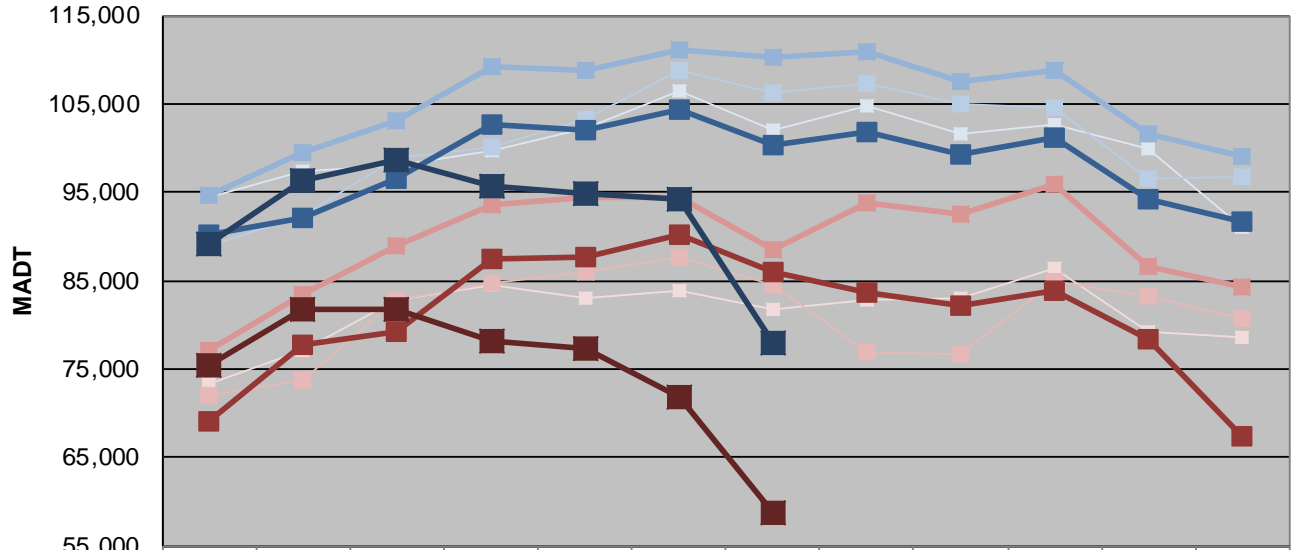
Station Measurement: VOLUME		
Route: TH 65	Route Direction: N/S	Lanes: 6
County: Hennepin		Closest City: Minneapolis
Functional Class: Urban Minor Arterial		
Location: S OF CSAH 5 (E FRANKLIN AVE) IN MINNEAPOLIS		
Ref Post: 000+00.480	True Mile: 0.48	Sequence No. 9838
Volume: 2,221,271		MADT: 71,654
Weekday (M-F) MADT: 77,896		Weekend (Sa-Su) MADT: 58,806



Note: Increase in traffic April 2015 due to detours... Decrease in traffic April to July 2017 due to construction on I-35



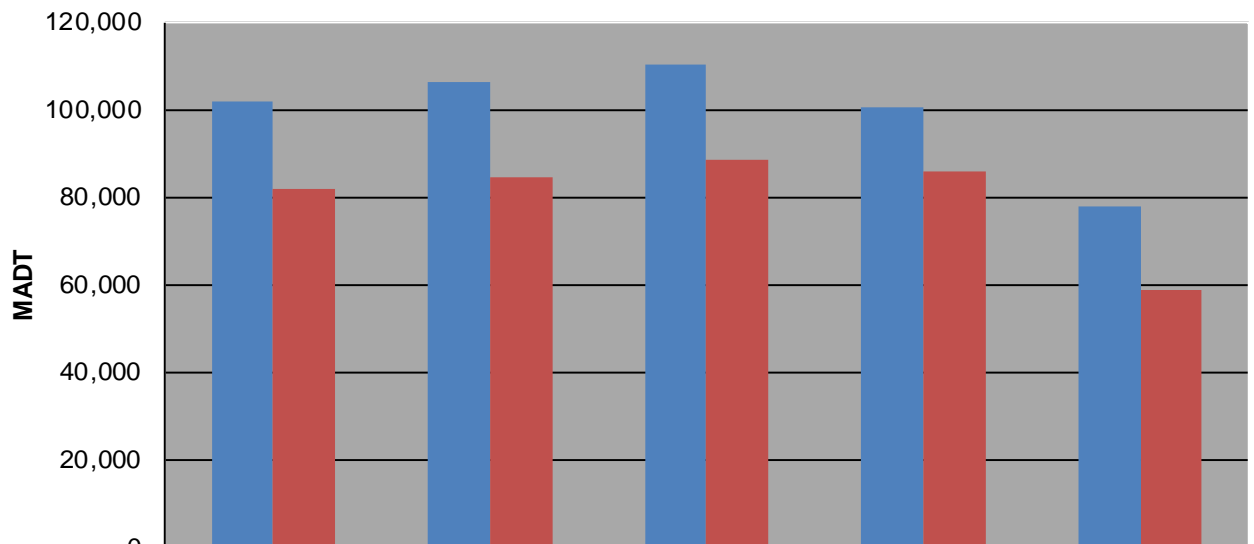
Weekday (WD)/Weekend (WE) Monthly Average Daily Traffic



	Jan	Feb	Mar	Apr	May	Jun	Jul	Aug	Sep	Oct	Nov	Dec
'13 WD	94,380	97,426	97,926	99,764	102,162	106,436	102,012	104,710	101,548	102,578	99,902	90,962
'13 WE	73,278	77,124	82,752	84,464	82,974	83,890	81,746	82,922	83,026	86,350	79,146	78,670
'14 WD	88,992	92,406	98,826	100,088	103,198	108,808	106,164	107,210	104,948	104,634	96,510	96,860
'14 WE	72,118	73,646	82,852	84,638	86,040	87,650	84,574	76,808	76,656	84,934	83,170	80,730
'15 WD	94,596	99,456	103,164	109,224	108,880	111,202	110,348	110,834	107,432	108,816	101,624	99,134
'15 WE	77,108	83,448	88,946	93,522	94,432	94,368	88,608	93,740	92,636	95,970	86,628	84,316
'16 WD	90,194	92,146	96,490	102,592	102,062	104,390	100,306	101,742	99,334	101,246	94,172	91,660
'16 WE	69,130	77,756	79,270	87,380	87,758	90,132	85,980	83,742	82,248	83,824	78,318	67,404
'17 WD	89,104	96,304	98,668	95,622	94,896	94,184	77,896					
'17 WE	75,528	81,780	81,756	78,262	77,380	71,946	58,806					

Note: 'Weekday' defined as Monday-Friday, 'Weekend' defined as Saturday-Sunday

Weekday/Weekend Monthly Average Daily Traffic ('13-'17)



	Jul-13	Jul-14	Jul-15	Jul-16	Jul-17
Weekday	102,012	106,164	110,348	100,306	77,896
Weekend	81,746	84,574	88,608	85,980	58,806