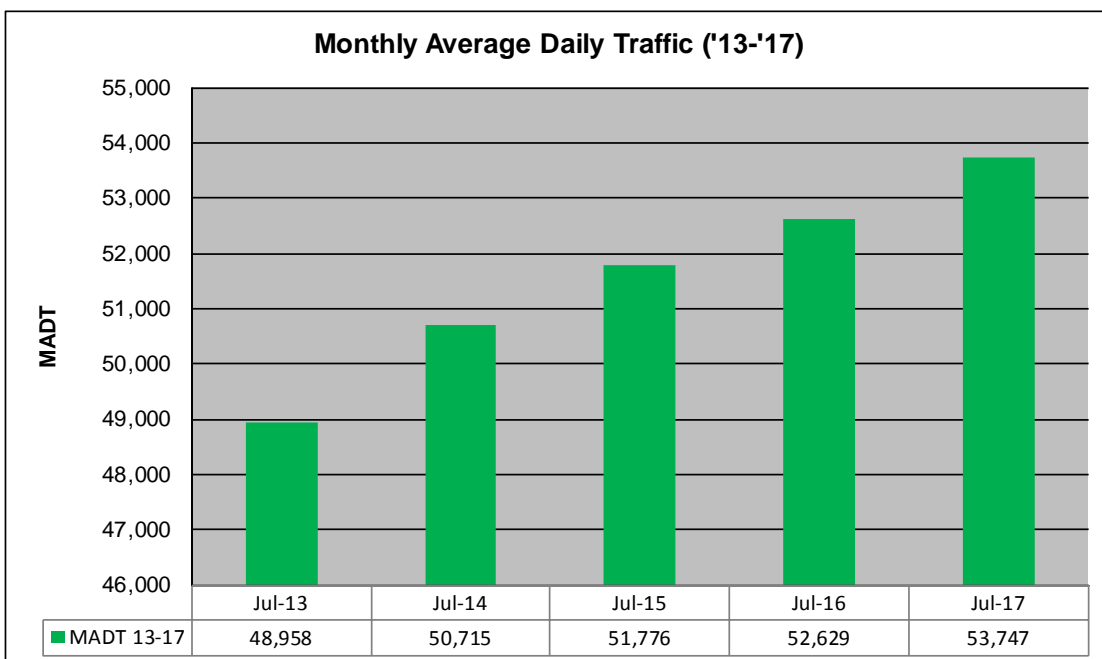
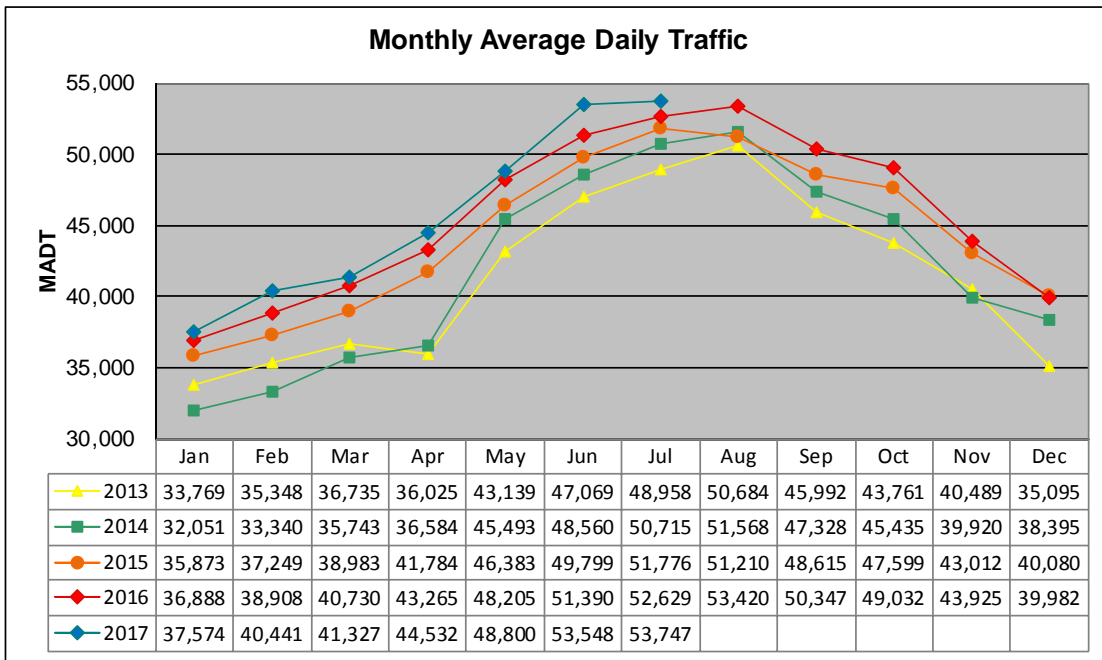


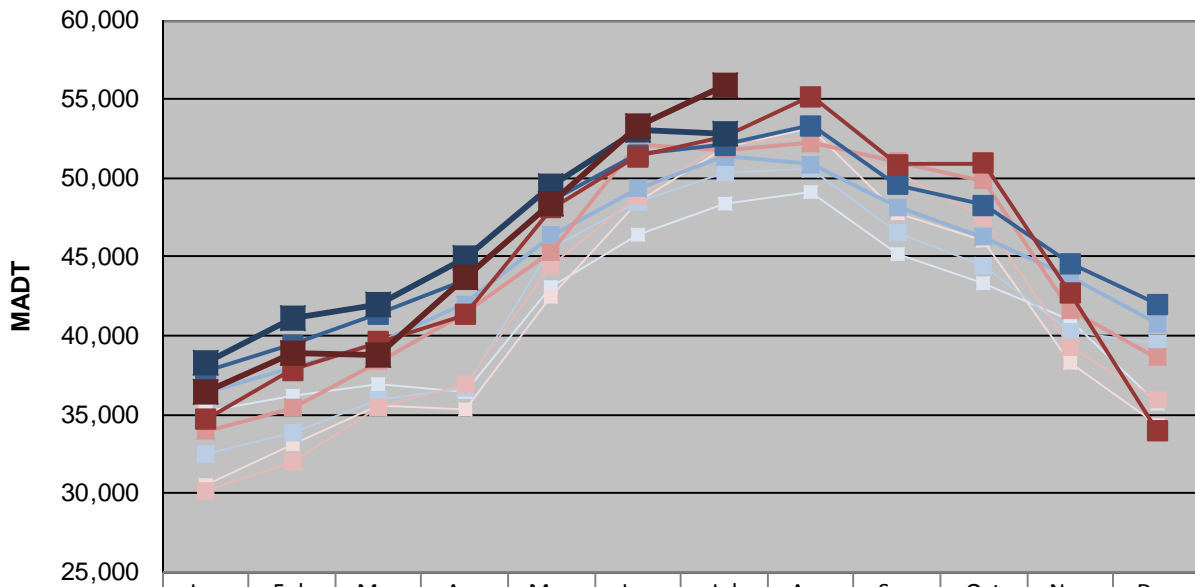
# MONTHLY REPORT, STATION NO. 191 (ATR)

## JULY 2017

Station Measurement: VOLUME/SPEED/CLASS		
Route: I-35	Route Direction: N/S	Lanes: 4
County: Chisago		Closest City: Wyoming
Functional Class: Urban Principal Arterial - Interstate		
Location: 1.5 MI N OF CSAH22 (E VIKING BLVD), N OF WYOMING		
Ref Post: 137+00.500	True Mile: 137.519	Sequence No. 6784
<b>Volume: 1,666,161</b>		<b>MADT: 53,747</b>
<b>Weekday (M-F) MADT: 52,780</b>		<b>Weekend (Sa-Su) MADT: 55,900</b>



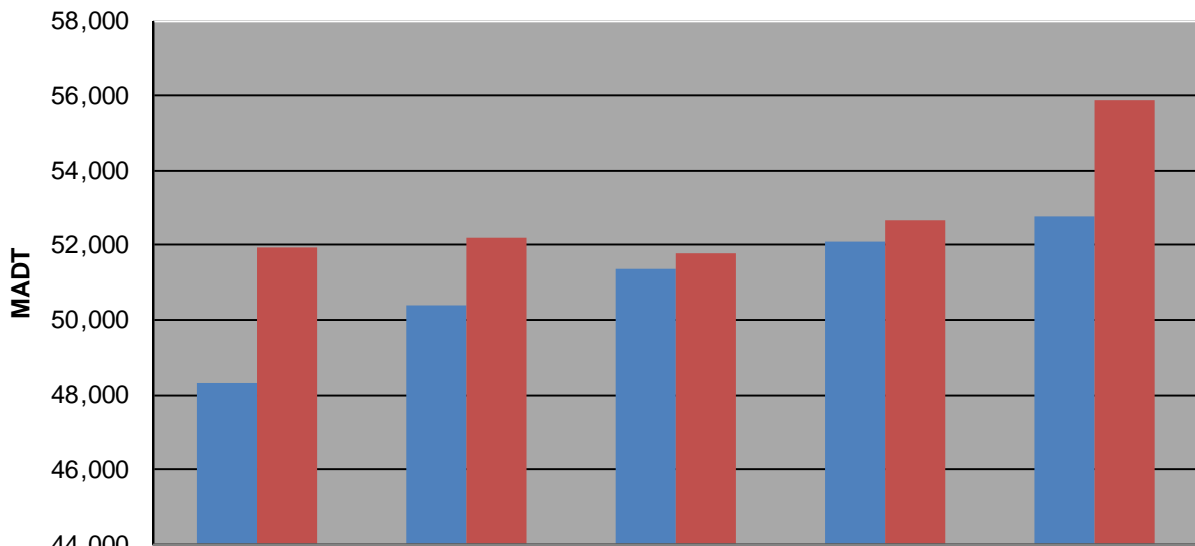
### Weekday (WD)/Weekend (WE) Monthly Average Daily Traffic



	Jan	Feb	Mar	Apr	May	Jun	Jul	Aug	Sep	Oct	Nov	Dec
'13 WD	35,138	36,238	36,870	36,368	43,134	46,384	48,314	49,166	45,222	43,358	40,996	35,654
'13 WE	30,494	33,120	35,584	35,270	42,480	48,438	51,948	53,186	47,794	46,028	38,262	34,338
'14 WD	32,448	33,878	35,994	36,676	45,508	48,526	50,378	50,556	46,564	44,376	40,238	39,480
'14 WE	30,104	31,994	35,428	36,938	44,460	48,822	52,224	52,530	50,338	47,484	39,284	35,932
'15 WD	36,332	37,988	39,584	42,000	46,352	49,348	51,366	50,894	48,186	46,228	43,792	40,752
'15 WE	33,934	35,402	38,346	41,468	45,330	52,116	51,776	52,202	51,052	49,826	41,640	38,594
'16 WD	37,680	39,410	41,368	43,562	48,576	51,510	52,078	53,342	49,600	48,310	44,616	41,990
'16 WE	34,696	37,792	39,606	41,352	48,070	51,354	52,668	55,176	50,846	50,934	42,712	34,002
'17 WD	38,328	41,054	41,908	44,930	49,482	53,112	52,780					
'17 WE	36,436	38,906	38,814	43,738	48,402	53,246	55,900					

Note: 'Weekday' defined as Monday-Friday, 'Weekend' defined as Saturday-Sunday

### Weekday/Weekend Monthly Average Daily Traffic ('13-'17)



	Jul-13	Jul-14	Jul-15	Jul-16	Jul-17
Weekday	48,314	50,378	51,366	52,078	52,780
Weekend	51,948	52,224	51,776	52,668	55,900