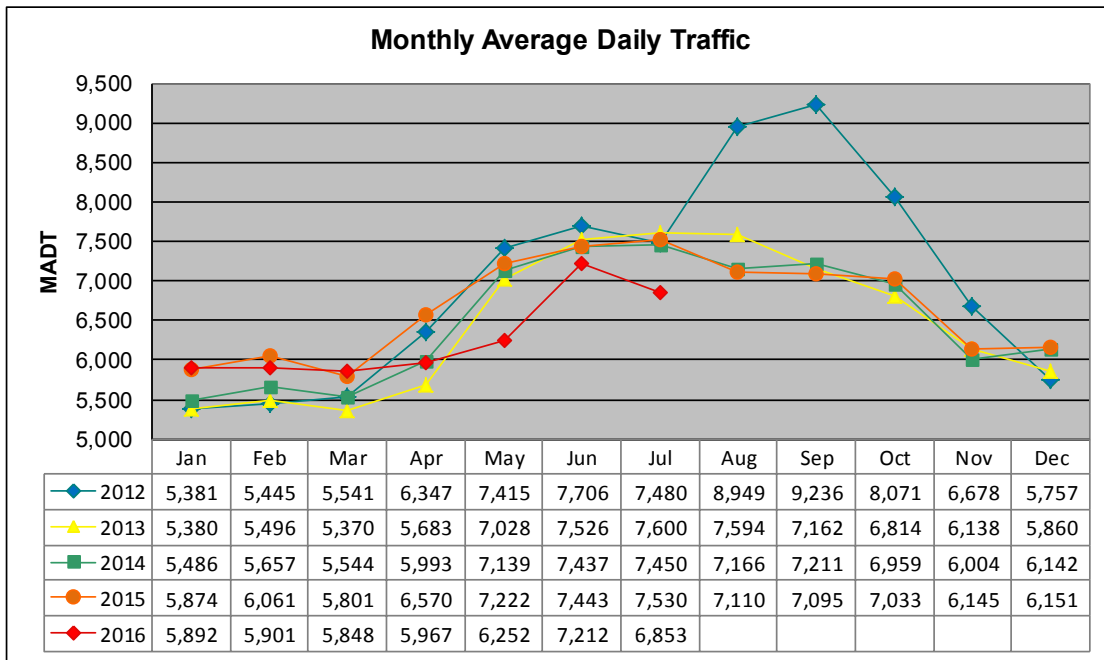


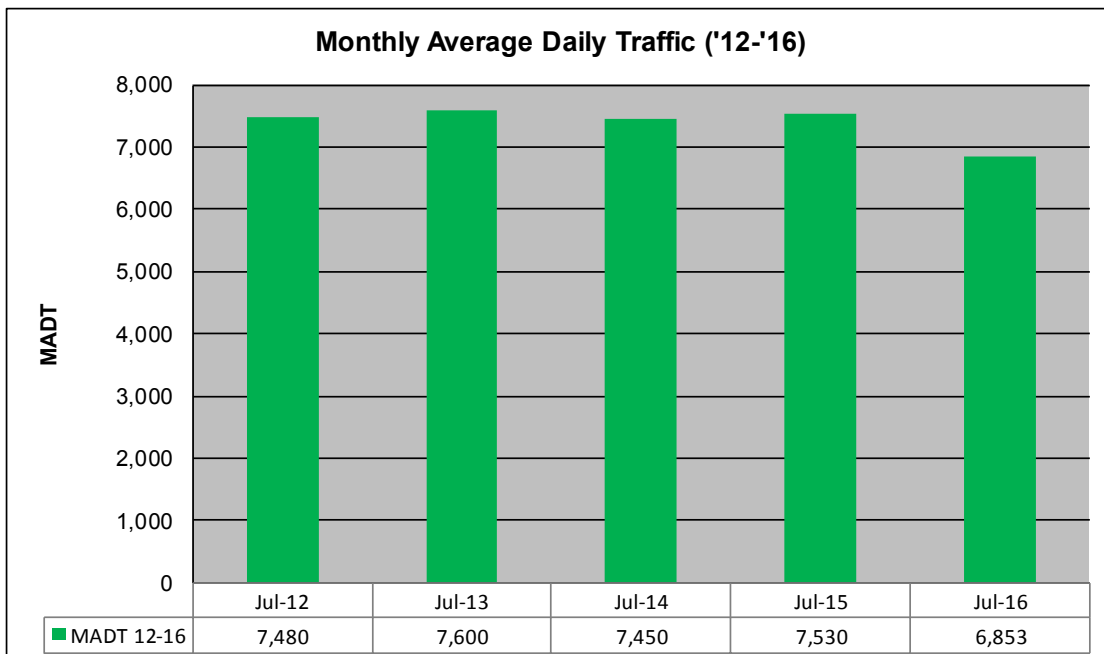
# MONTHLY REPORT, STATION NO. 386 (ATR)

## JULY 2016

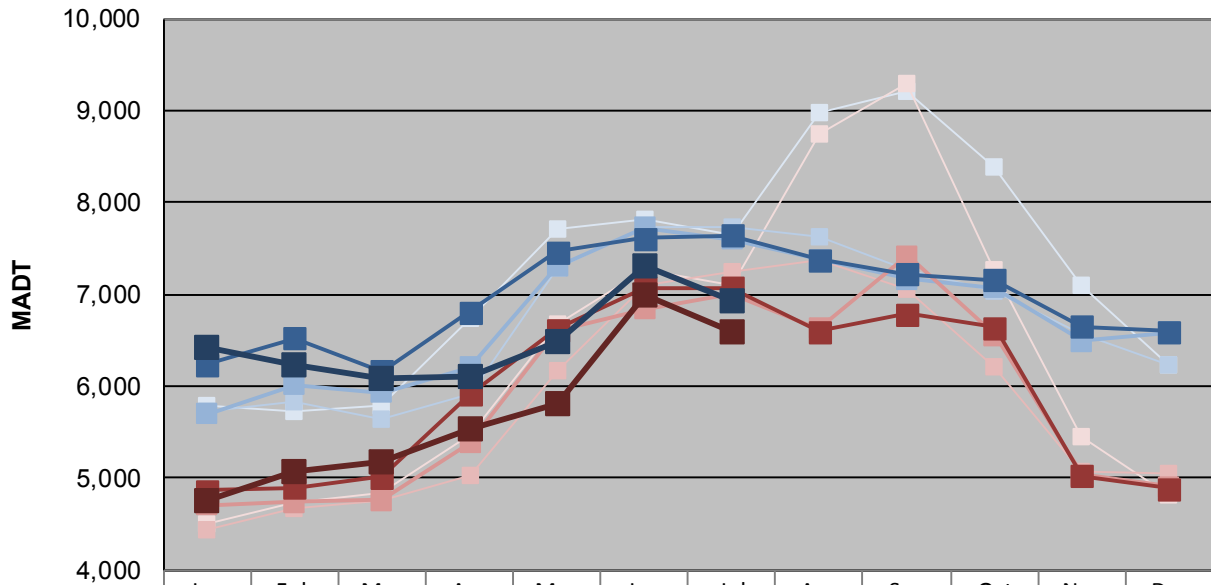
|  |                      |                                    |
|--|----------------------|------------------------------------|
| Station Measurement: VOLUME/SPEED/CLASS        |                      |                                    |
| Route: TH 97                                   | Route Direction: N/S | Lanes: 2                           |
| County: Washington                             |                      | Closest City: Scandia              |
| Functional Class: Rural Minor Arterial         |                      |                                    |
| Location: E OF CSAH1 (LOFTON AVE N) IN SCANDIA |                      |                                    |
| Ref Post: 008+00.844                           | True Mile: 8.807     | Sequence No. 9875                  |
| <b>Volume: 212,457</b>                         |                      | <b>MADT: 6,853</b>                 |
| <b>Weekday (M-F) MADT: 6,932</b>               |                      | <b>Weekend (Sa-Su) MADT: 6,602</b> |



Note: Increase in traffic August to October 2012 due to detour from TH 8... Decrease in traffic April to June 2016 due to construction on TH 97



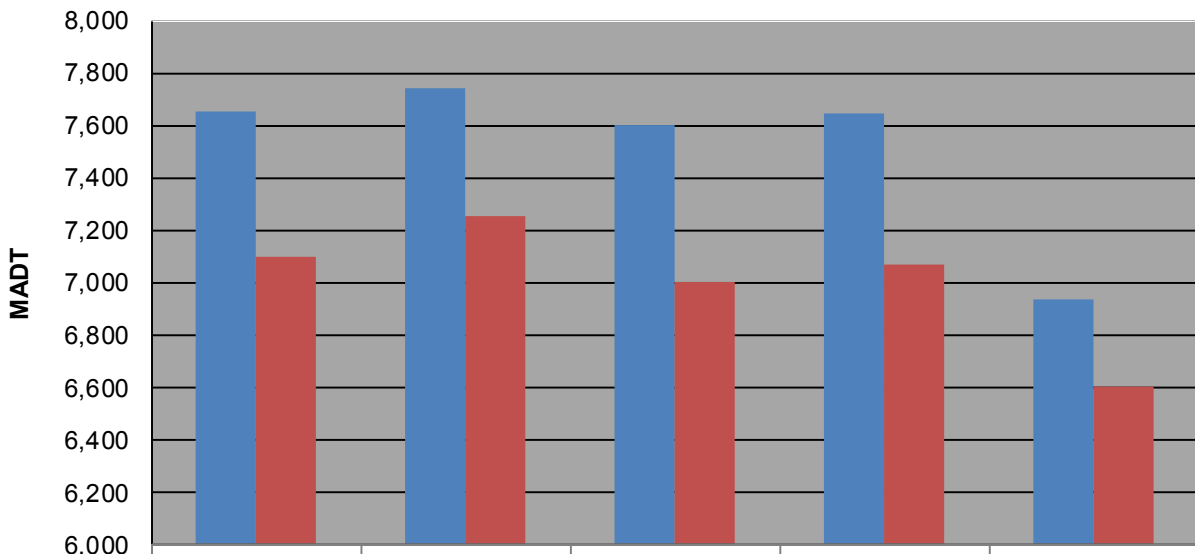
**Weekday (WD)/Weekend (WE) Monthly Average Daily Traffic**



|        | Jan   | Feb   | Mar   | Apr   | May   | Jun   | Jul   | Aug   | Sep   | Oct   | Nov   | Dec   |
|--------|-------|-------|-------|-------|-------|-------|-------|-------|-------|-------|-------|-------|
| '12 WD | 5,784 | 5,734 | 5,792 | 6,744 | 7,712 | 7,824 | 7,656 | 8,978 | 9,206 | 8,382 | 7,108 | 6,232 |
| '12 WE | 4,500 | 4,740 | 4,832 | 5,482 | 6,670 | 7,272 | 7,100 | 8,742 | 9,296 | 7,270 | 5,448 | 4,824 |
| '13 WD | 5,720 | 5,822 | 5,634 | 5,916 | 7,296 | 7,742 | 7,742 | 7,630 | 7,260 | 7,044 | 6,562 | 6,242 |
| '13 WE | 4,430 | 4,680 | 4,760 | 5,032 | 6,172 | 7,094 | 7,254 | 7,364 | 7,062 | 6,208 | 5,068 | 5,058 |
| '14 WD | 5,700 | 6,022 | 5,930 | 6,212 | 7,308 | 7,728 | 7,602 | 7,380 | 7,164 | 7,072 | 6,488 | 6,586 |
| '14 WE | 4,712 | 4,744 | 4,760 | 5,386 | 6,608 | 6,844 | 7,004 | 6,626 | 7,426 | 6,558 | 5,034 | 4,904 |
| '15 WD | 6,244 | 6,526 | 6,164 | 6,810 | 7,464 | 7,608 | 7,642 | 7,378 | 7,224 | 7,158 | 6,646 | 6,598 |
| '15 WE | 4,868 | 4,900 | 5,010 | 5,910 | 6,620 | 7,074 | 7,068 | 6,594 | 6,784 | 6,638 | 5,026 | 4,886 |
| '16 WD | 6,432 | 6,228 | 6,086 | 6,112 | 6,478 | 7,310 | 6,932 |       |       |       |       |       |
| '16 WE | 4,760 | 5,068 | 5,170 | 5,534 | 5,808 | 6,998 | 6,602 |       |       |       |       |       |

Note: 'Weekday' defined as Monday-Friday, 'Weekend' defined as Saturday-Sunday

**Weekday/Weekend Monthly Average Daily Traffic ('12-'16)**



|         |       |       |       |       |       |
|---------|-------|-------|-------|-------|-------|
| Weekday | 7,656 | 7,742 | 7,602 | 7,642 | 6,932 |
| Weekend | 7,100 | 7,254 | 7,004 | 7,068 | 6,602 |