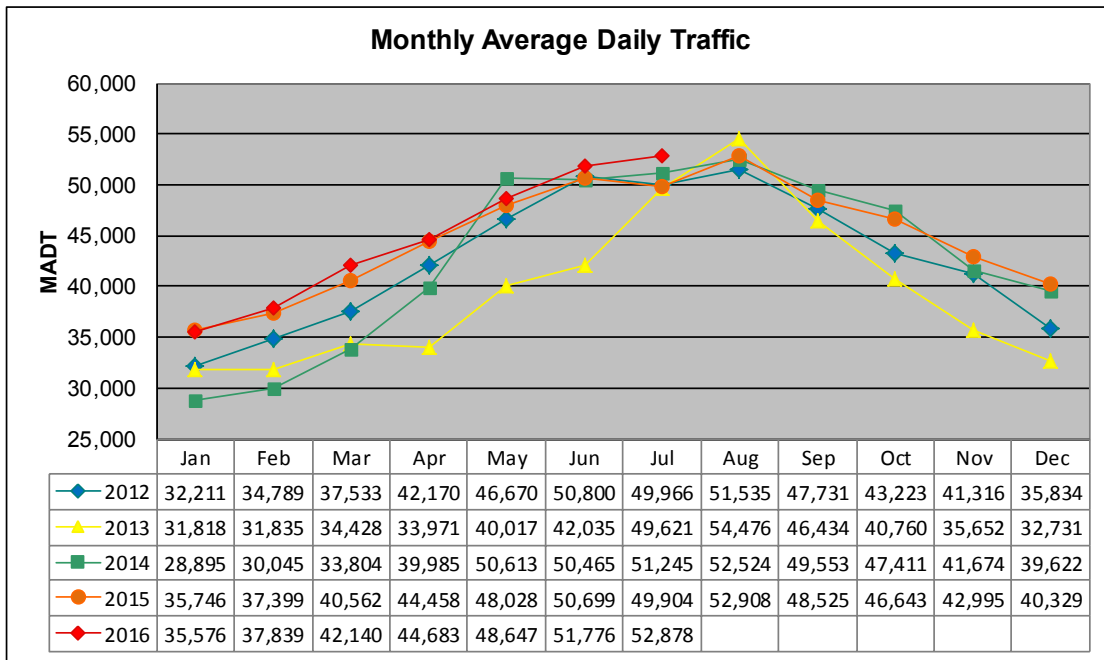


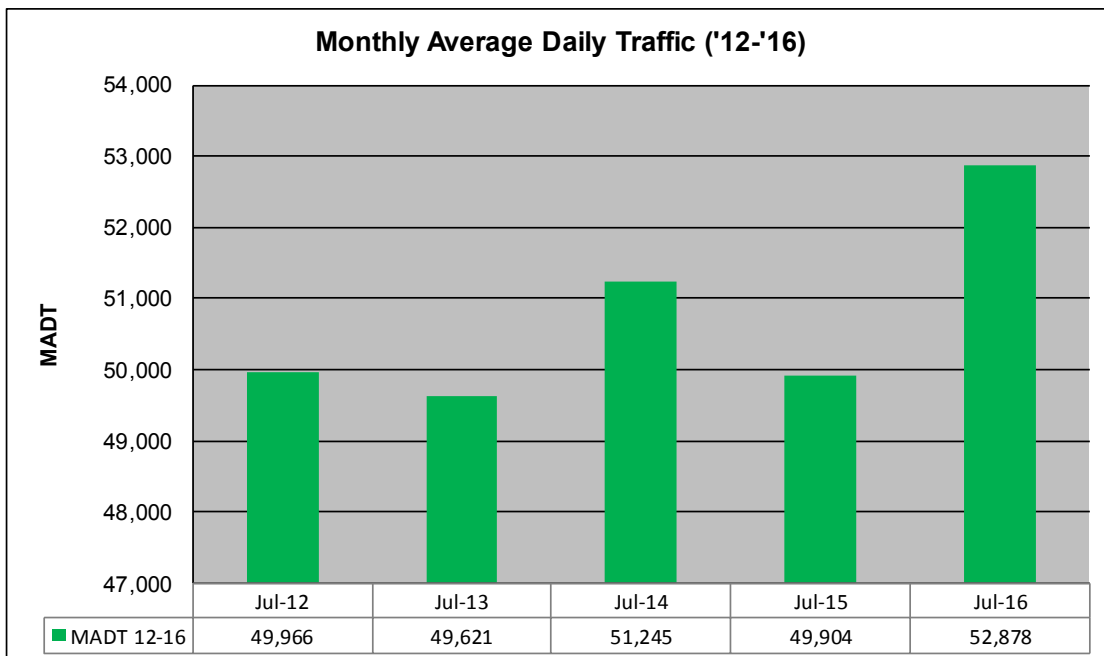
MONTHLY REPORT, STATION NO. 200 (ATR)

JULY 2016

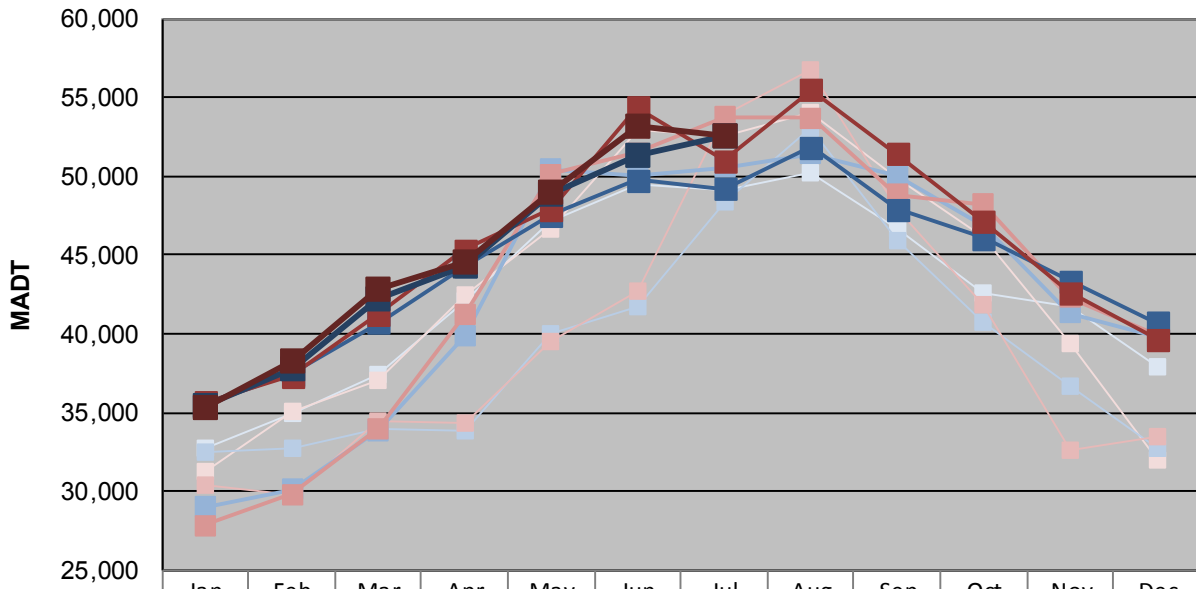
| | | |
|---|----------------------|-------------------------------------|
| Station Measurement: VOLUME/SPEED/CLASS | | |
| Route: I-94 | Route Direction: N/S | Lanes: 4 |
| County: Wright | | Closest City: Clearwater |
| Functional Class: Rural Principal Arterial - Interstate | | |
| Location: 1.1 MI NW OF CSAH8, SE OF CLEARWATER | | |
| Ref Post: 182+00.200 | True Mile: 183.084 | Sequence No. 6781 |
| Volume: 1,639,208 | | MADT: 52,878 |
| Weekday (M-F) MADT: 52,500 | | Weekend (Sa-Su) MADT: 52,616 |



Note: Decrease in traffic April to June 2013 due to construction on I-94... Increase in traffic August 2013 and May/June 2014 due to TH 10 detours



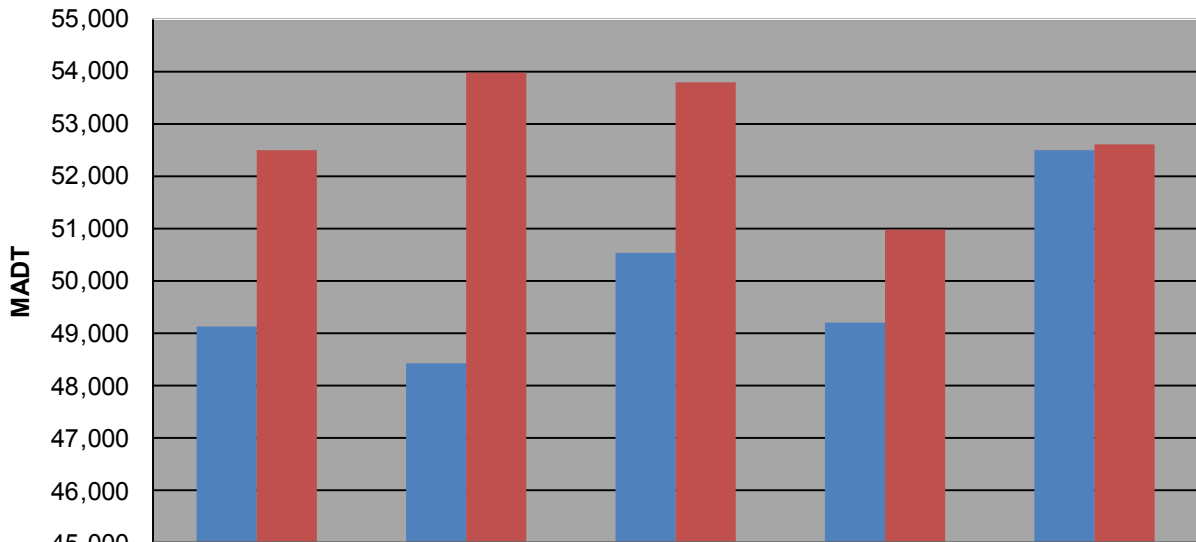
Weekday (WD)/Weekend (WE) Monthly Average Daily Traffic



| | Jan | Feb | Mar | Apr | May | Jun | Jul | Aug | Sep | Oct | Nov | Dec |
|--------|--------|--------|--------|--------|--------|--------|--------|--------|--------|--------|--------|--------|
| '12 WD | 32,724 | 34,904 | 37,376 | 42,060 | 47,164 | 49,484 | 49,110 | 50,226 | 46,690 | 42,578 | 41,672 | 37,894 |
| '12 WE | 31,280 | 35,102 | 37,014 | 42,500 | 46,596 | 52,892 | 52,500 | 54,032 | 49,816 | 46,202 | 39,362 | 31,982 |
| '13 WD | 32,432 | 32,680 | 34,018 | 33,896 | 40,016 | 41,704 | 48,420 | 53,078 | 45,854 | 40,688 | 36,642 | 32,730 |
| '13 WE | 30,446 | 29,726 | 34,494 | 34,300 | 39,514 | 42,698 | 53,968 | 56,806 | 47,840 | 41,800 | 32,646 | 33,472 |
| '14 WD | 29,012 | 30,138 | 33,842 | 39,852 | 50,424 | 50,064 | 50,530 | 51,426 | 49,996 | 46,806 | 41,352 | 39,774 |
| '14 WE | 27,868 | 29,812 | 34,018 | 41,210 | 50,144 | 51,510 | 53,776 | 53,714 | 48,840 | 48,196 | 42,320 | 39,906 |
| '15 WD | 35,498 | 37,442 | 40,688 | 44,250 | 47,564 | 49,742 | 49,210 | 51,862 | 47,932 | 46,084 | 43,340 | 40,734 |
| '15 WE | 35,676 | 37,292 | 41,262 | 45,350 | 47,880 | 54,406 | 50,974 | 55,484 | 51,408 | 47,098 | 42,646 | 39,656 |
| '16 WD | 35,456 | 37,758 | 42,198 | 44,338 | 48,840 | 51,314 | 52,500 | | | | | |
| '16 WE | 35,280 | 38,244 | 42,782 | 44,498 | 48,986 | 53,124 | 52,616 | | | | | |

Note: 'Weekday' defined as Monday-Friday, 'Weekend' defined as Saturday-Sunday

Weekday/Weekend Monthly Average Daily Traffic ('12-'16)



| | Jul-12 | Jul-13 | Jul-14 | Jul-15 | Jul-16 |
|---------|--------|--------|--------|--------|--------|
| Weekday | 49,110 | 48,420 | 50,530 | 49,210 | 52,500 |
| Weekend | 52,500 | 53,968 | 53,776 | 50,974 | 52,616 |