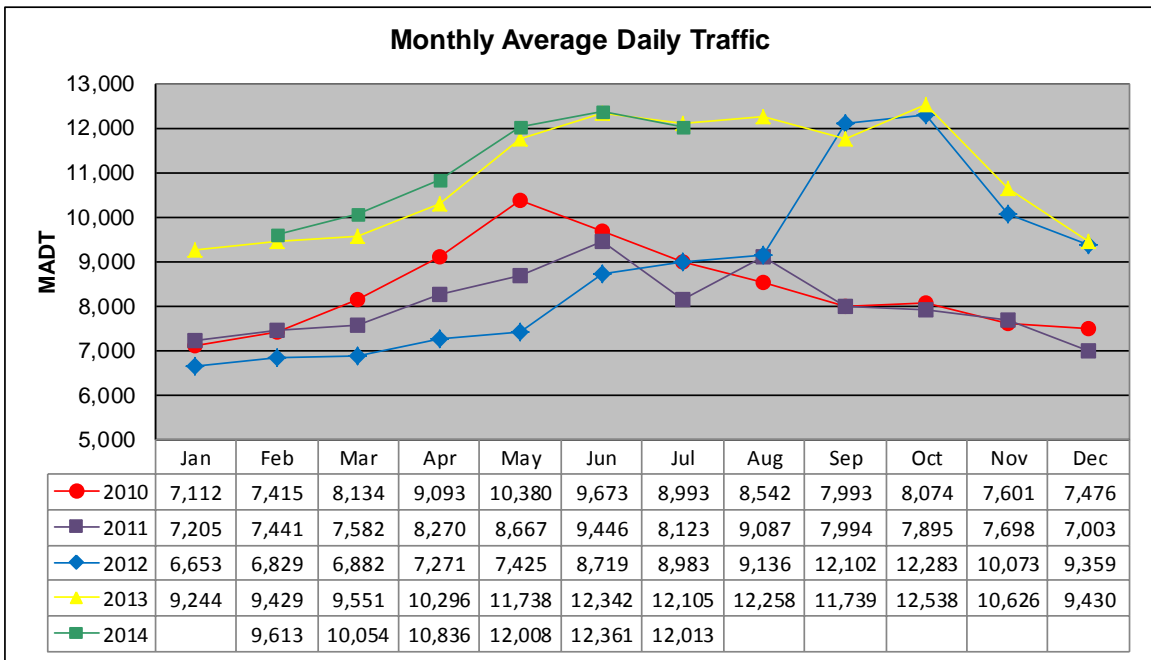


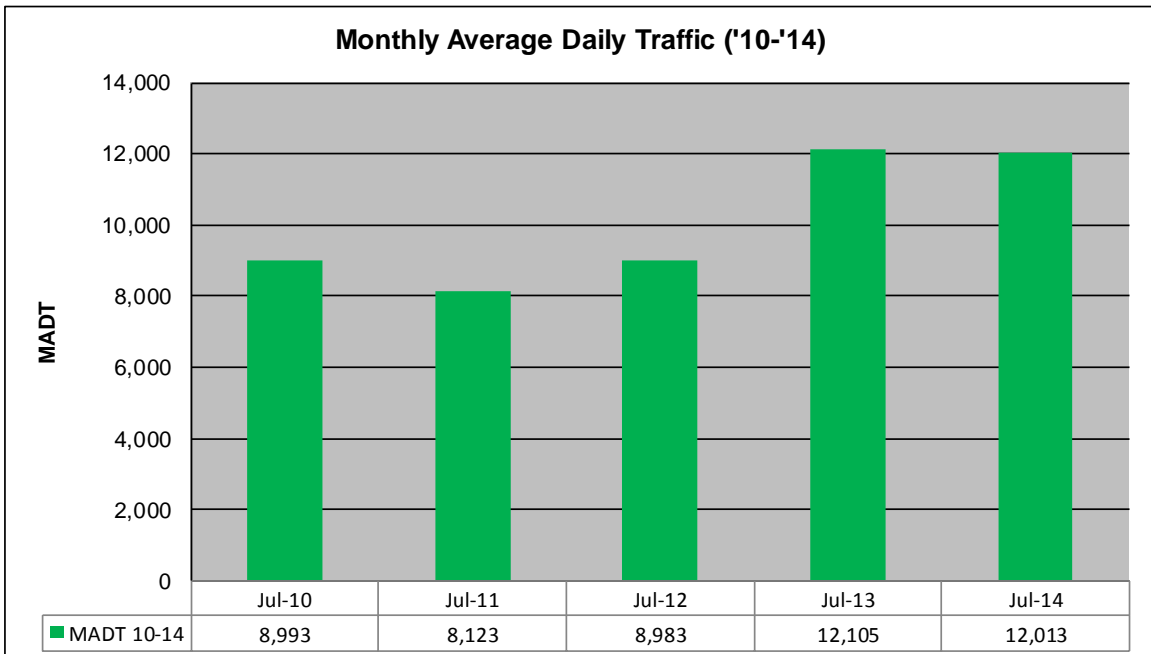
# MONTHLY REPORT, STATION NO. 45 (WIM)

## JULY 2014

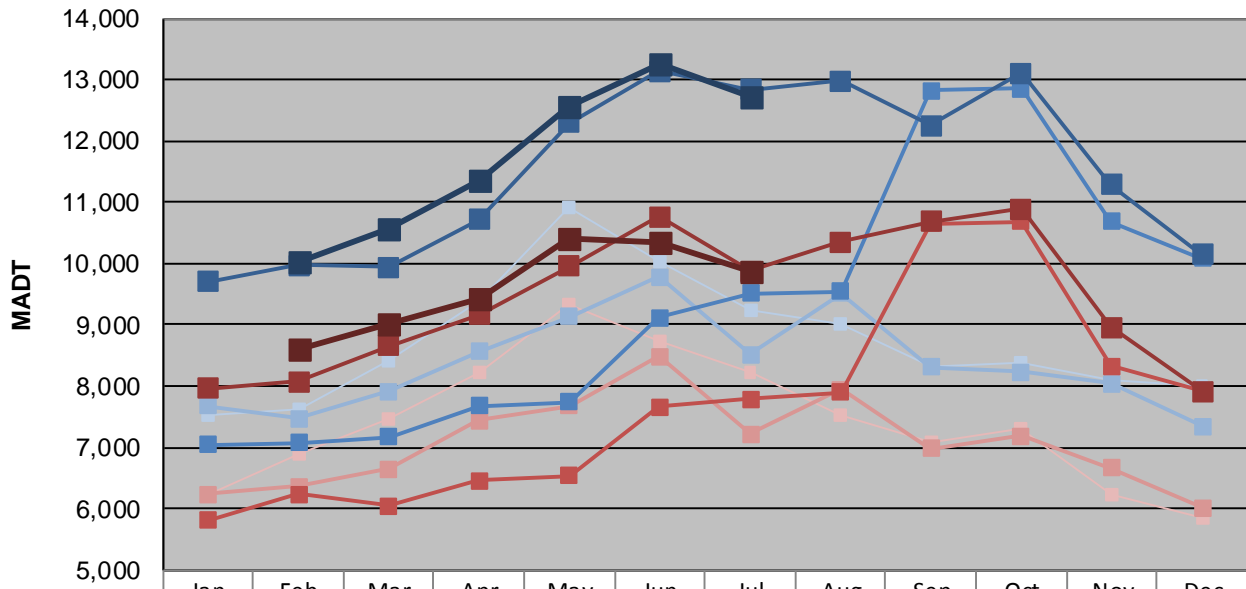
Station Measurement: VOLUME/SPEED/CLASS/WEIGHT		
Route: CSAH 14	Route Direction: E/W	Lanes: 2
County: Anoka	Closest City: Blaine	
Functional Class: Urban Other Principal Arterial		
Location: .7 MI W OF CSAH17 (LEXINGTON AVE NE) IN BLAINE		
Ref Post: 010+00.100	True Mile: 10.1	Sequence No. 9893
<b>Volume: 372,399</b>		<b>MADT: 12,013</b>
<b>Weekday (M-F) MADT: 9,862</b>		<b>Weekend (Sa-Su) MADT: 9,862</b>



Note: Volume data reported as ATR 422 from 2010-2013... Decrease in traffic April/May 2012 due to construction... Increase in traffic beginning September 2012 due to a new turn lane... No data January 2014 due to site issues



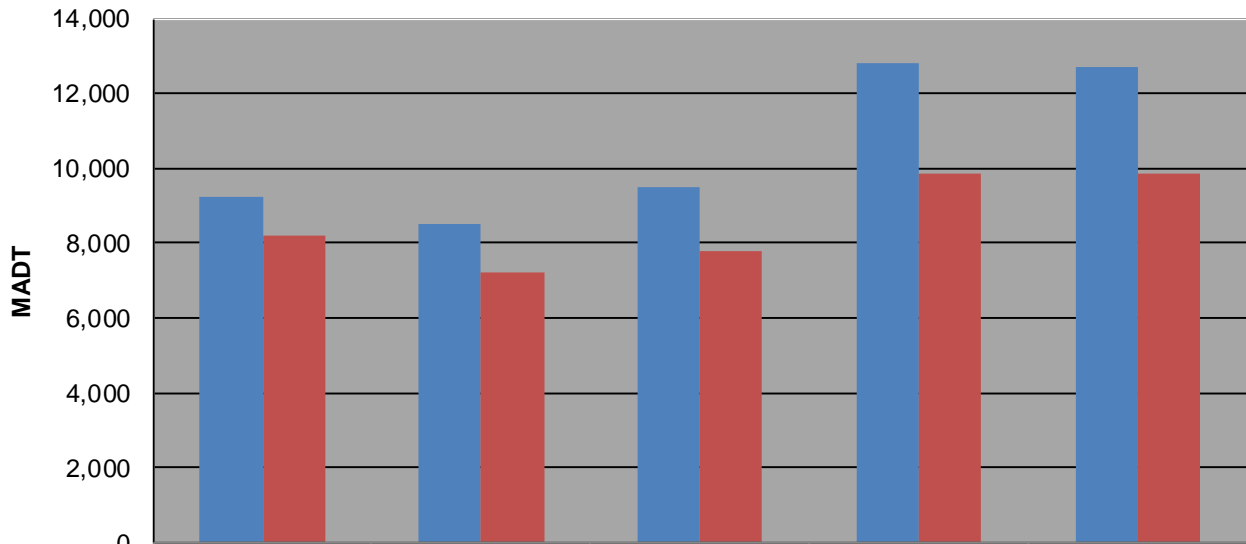
**Weekday (WD)/Weekend (WE) Monthly Average Daily Traffic**



	Jan	Feb	Mar	Apr	May	Jun	Jul	Aug	Sep	Oct	Nov	Dec
'10 WD	7,532	7,622	8,400	9,392	10,926	10,018	9,244	9,000	8,308	8,394	8,098	8,010
'10 WE	6,228	6,902	7,450	8,212	9,326	8,720	8,220	7,516	7,092	7,306	6,220	5,862
'11 WD	7,670	7,474	7,910	8,566	9,128	9,778	8,522	9,520	8,308	8,226	8,046	7,338
'11 WE	6,234	6,366	6,656	7,434	7,678	8,478	7,216	7,940	6,986	7,192	6,658	6,014
'12 WD	7,042	7,072	7,174	7,672	7,744	9,114	9,508	9,542	12,828	12,862	10,690	10,082
'12 WE	5,810	6,234	6,040	6,454	6,536	7,668	7,790	7,900	10,648	10,686	8,320	7,908
'13 WD	9,708	9,970	9,940	10,716	12,308	13,132	12,832	12,986	12,260	13,110	11,294	10,152
'13 WE	7,966	8,080	8,666	9,166	9,950	10,762	9,880	10,352	10,678	10,892	8,954	7,908
'14 WD		10,014	10,566	11,346	12,570	13,270	12,710					
'14 WE		8,614	9,008	9,434	10,410	10,356	9,862					

Note: 'Weekday' defined as Monday-Friday, 'Weekend' defined as Saturday-Sunday

**Weekday/Weekend Monthly Average Daily Traffic ('10-'14)**



	Jul-10	Jul-11	Jul-12	Jul-13	Jul-14
Weekday	9,244	8,522	9,508	12,832	12,710
Weekend	8,220	7,216	7,790	9,880	9,862