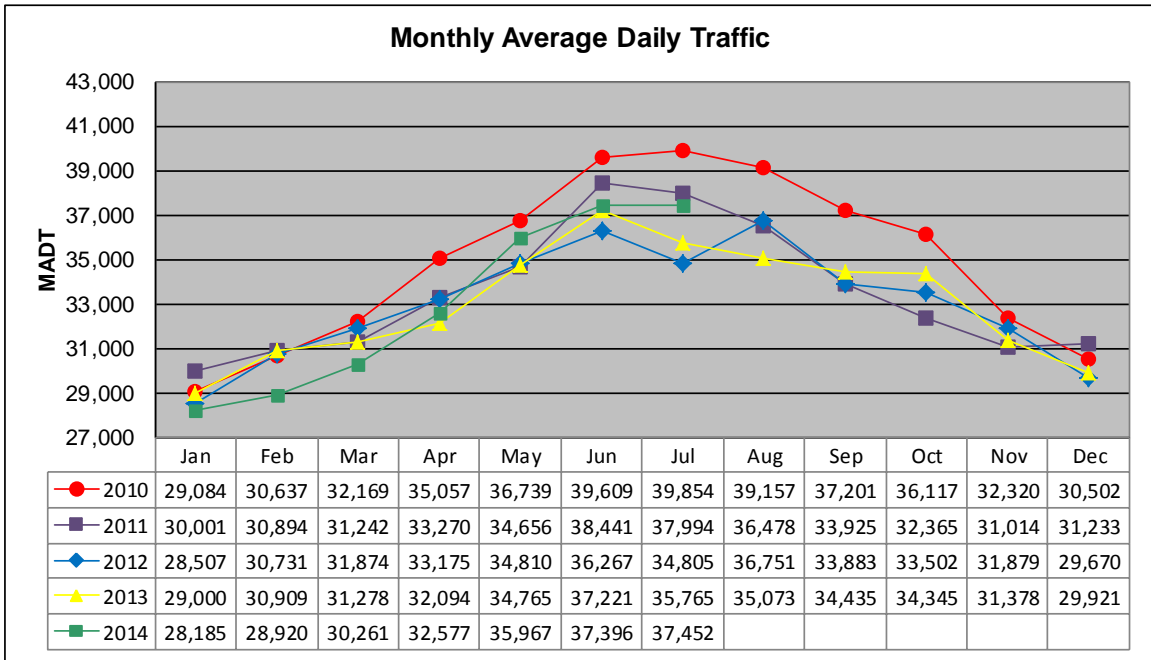


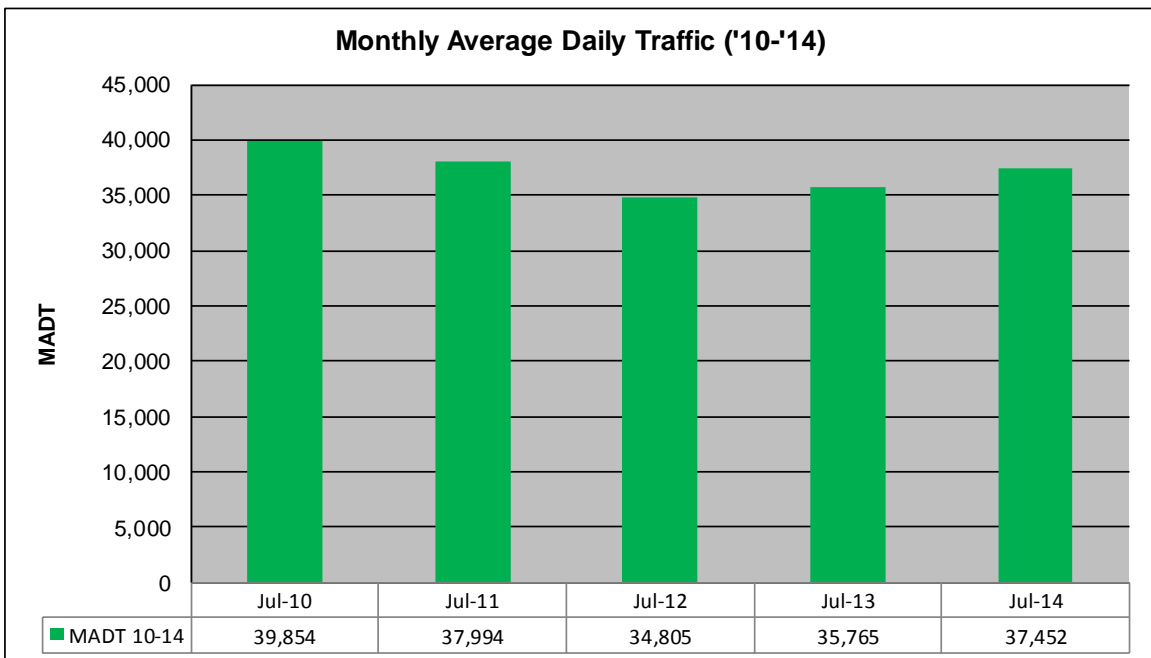
# MONTHLY REPORT, STATION NO. 352 (ATR)

## JULY 2014

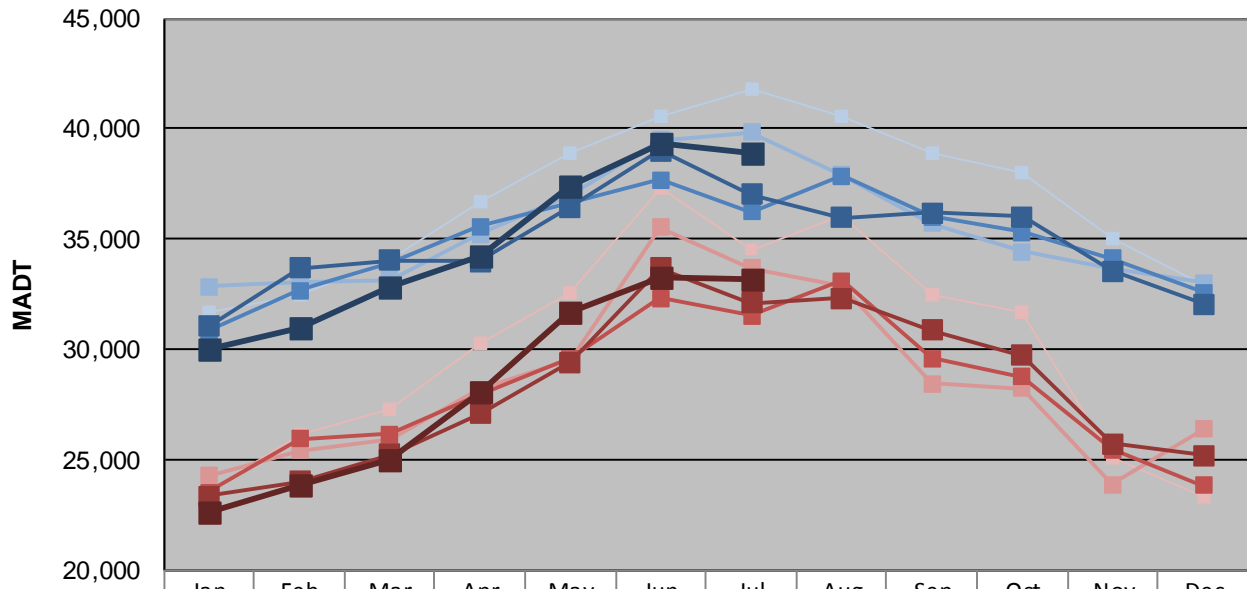
Station Measurement: VOLUME/SPEED/CLASS		
Route: TH 10	Route Direction: E/W	Lanes: 4
County: Anoka		Closest City: Ramsey
Functional Class: Urban Principal Arterial - Other Freeways or Expressways		
Location: SE OF MSAS112 (153RD AVE NW) IN RAMSEY		
Ref Post: 218+00.450	True Mile: 220.364	Sequence No. 6790
<b>Volume: 1,161,008</b>		<b>MADT: 37,452</b>
<b>Weekday (M-F) MADT: 38,898</b>		<b>Weekend (Sa-Su) MADT: 33,138</b>



Note: Decrease in traffic July 2012 due to construction on TH 10



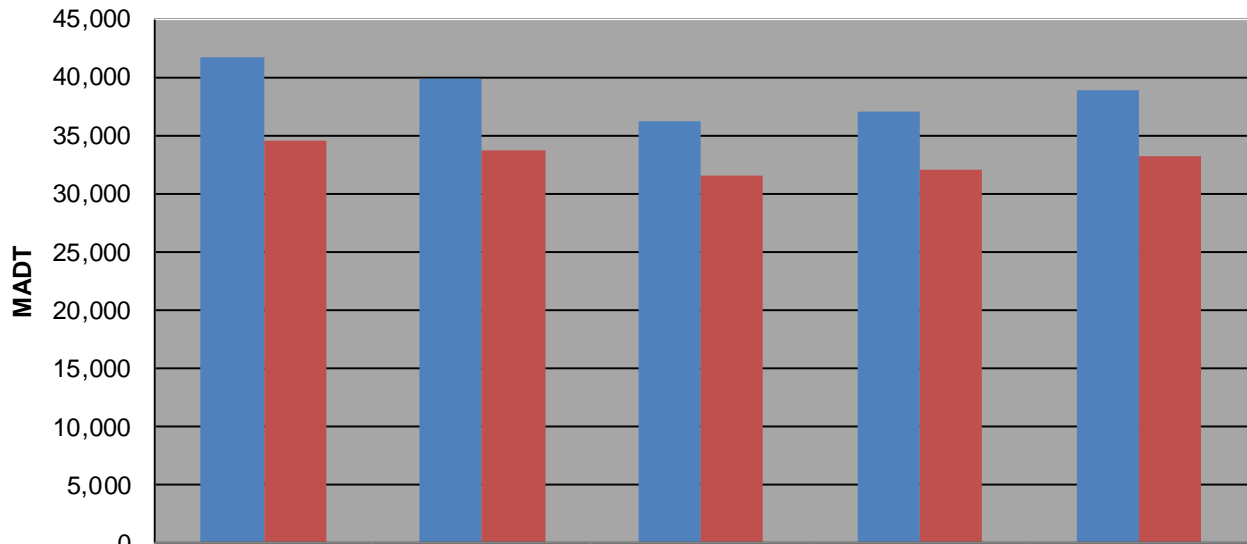
### Weekday (WD)/Weekend (WE) Monthly Average Daily Traffic



	Jan	Feb	Mar	Apr	May	Jun	Jul	Aug	Sep	Oct	Nov	Dec
'10 WD	31,686	32,454	34,012	36,664	38,860	40,528	41,758	40,604	38,880	38,056	35,052	32,900
'10 WE	23,590	26,096	27,256	30,264	32,566	37,300	34,538	36,072	32,512	31,652	25,056	23,326
'11 WD	32,838	33,070	33,170	35,230	36,998	39,476	39,832	37,920	35,690	34,410	33,626	33,024
'11 WE	24,266	25,426	25,924	28,194	29,520	35,522	33,698	32,898	28,444	28,232	23,876	26,364
'12 WD	30,834	32,680	33,958	35,564	36,668	37,704	36,228	37,878	36,026	35,308	34,138	32,580
'12 WE	23,510	25,952	26,154	27,964	29,598	32,300	31,548	33,092	29,596	28,752	25,458	23,836
'13 WD	31,056	33,672	34,030	33,972	36,462	38,986	37,004	35,980	36,200	36,012	33,572	32,070
'13 WE	23,336	24,004	25,252	27,078	29,430	33,692	32,114	32,304	30,886	29,742	25,718	25,204
'14 WD	29,968	30,964	32,830	34,268	37,432	39,316	38,898					
'14 WE	22,662	23,812	25,012	28,036	31,666	33,272	33,138					

Note: 'Weekday' defined as Monday-Friday, 'Weekend' defined as Saturday-Sunday

### Weekday/Weekend Monthly Average Daily Traffic ('10-'14)



	Jul-10	Jul-11	Jul-12	Jul-13	Jul-14
Weekday	41,758	39,832	36,228	37,004	38,898
Weekend	34,538	33,698	31,548	32,114	33,138