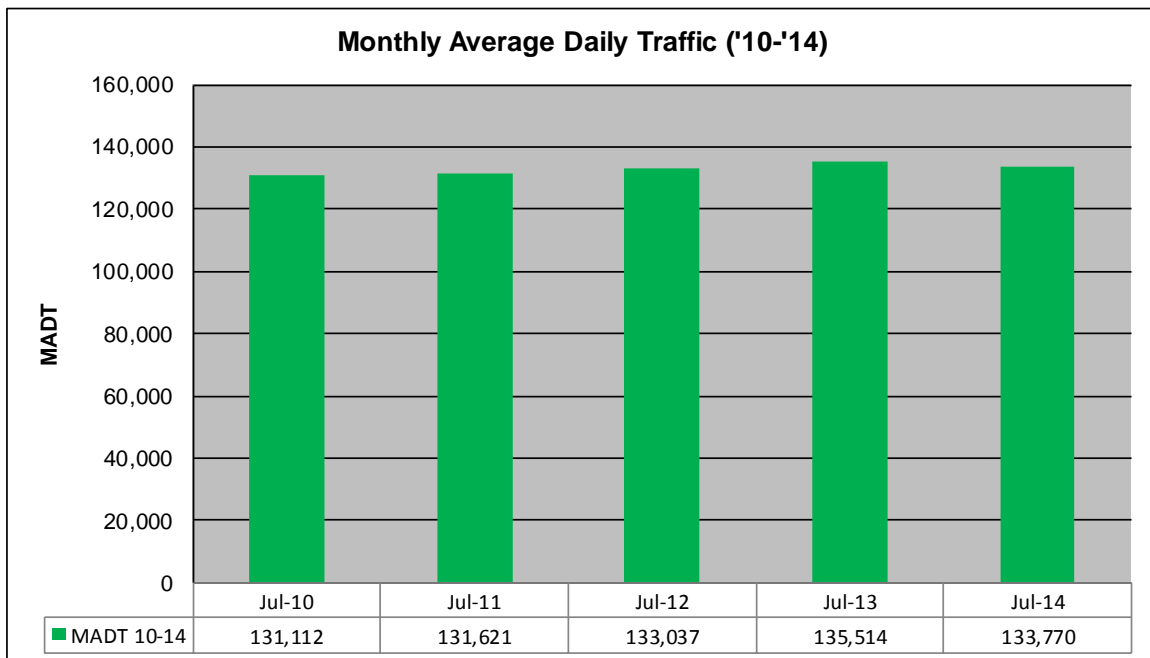
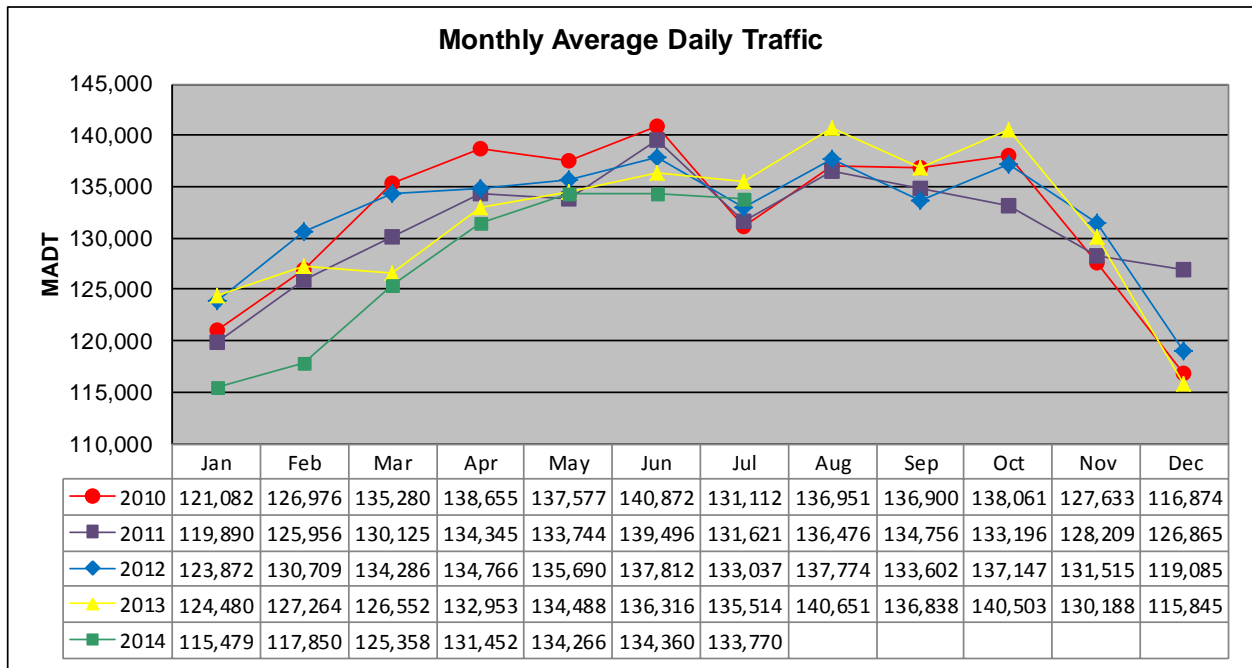


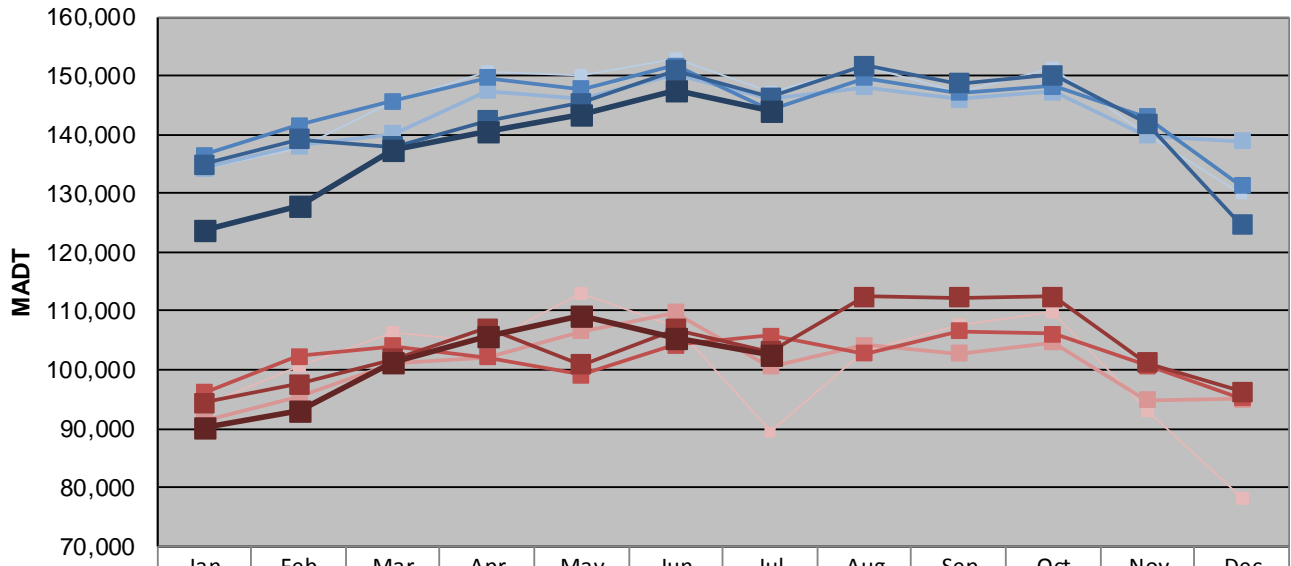
MONTHLY REPORT, STATION NO. 326 (ATR)

JULY 2014

Station Measurement: VOLUME		
Route: I-394	Route Direction: E/W	Lanes: 6
County: Hennepin		Closest City: Minneapolis
Functional Class: Urban Principal Arterial - Interstate		
Location: E OF TH100 IN MINNEAPOLIS		
Ref Post: 007+00.250	True Mile: 7.25	Sequence No. 9850
Volume: 4,146,870		MADT: 133,770
Weekday (M-F) MADT: 143,966		Weekend (Sa-Su) MADT: 102,412



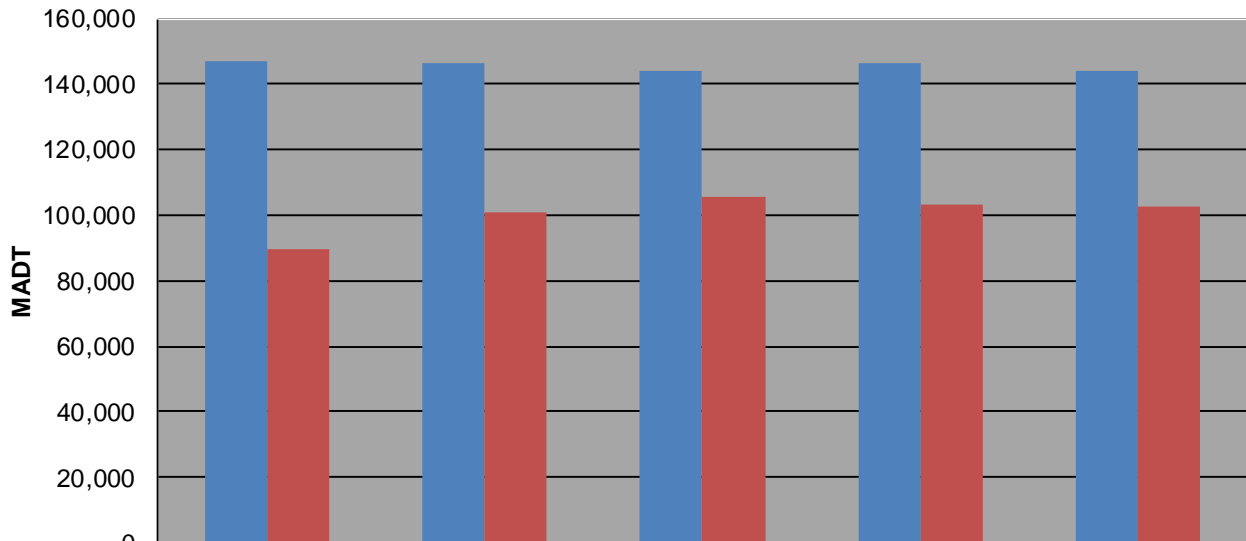
Weekday (WD)/Weekend (WE) Monthly Average Daily Traffic



	Jan	Feb	Mar	Apr	May	Jun	Jul	Aug	Sep	Oct	Nov	Dec
'10 WD	134,204	137,542	145,678	150,662	150,088	152,940	147,150	151,596	147,090	151,236	140,068	129,848
'10 WE	93,936	100,560	106,398	104,806	113,084	107,424	89,432	103,036	107,696	109,828	93,158	78,122
'11 WD	134,220	138,160	140,194	147,468	145,970	150,066	146,210	148,022	145,974	147,206	139,768	138,944
'11 WE	91,298	95,422	101,116	102,128	106,656	109,794	100,622	104,160	102,790	104,690	94,884	94,962
'12 WD	136,510	141,636	145,738	149,638	147,806	151,642	144,296	149,698	147,118	148,236	142,940	131,224
'12 WE	96,174	102,286	104,094	102,188	99,112	104,150	105,762	102,736	106,570	106,136	100,654	95,148
'13 WD	134,976	139,158	137,954	142,296	145,442	150,984	146,278	151,644	148,730	150,116	141,942	124,616
'13 WE	94,342	97,532	101,784	107,138	100,908	106,980	103,032	112,510	112,348	112,480	101,206	96,348
'14 WD	123,722	127,822	137,244	140,684	143,392	147,456	143,966					
'14 WE	90,302	92,922	101,338	105,692	109,168	105,392	102,412					

Note: 'Weekday' defined as Monday-Friday, 'Weekend' defined as Saturday-Sunday

Weekday/Weekend Monthly Average Daily Traffic ('10-'14)



	Jul-10	Jul-11	Jul-12	Jul-13	Jul-14
Weekday	147,150	146,210	144,296	146,278	143,966
Weekend	89,432	100,622	105,762	103,032	102,412