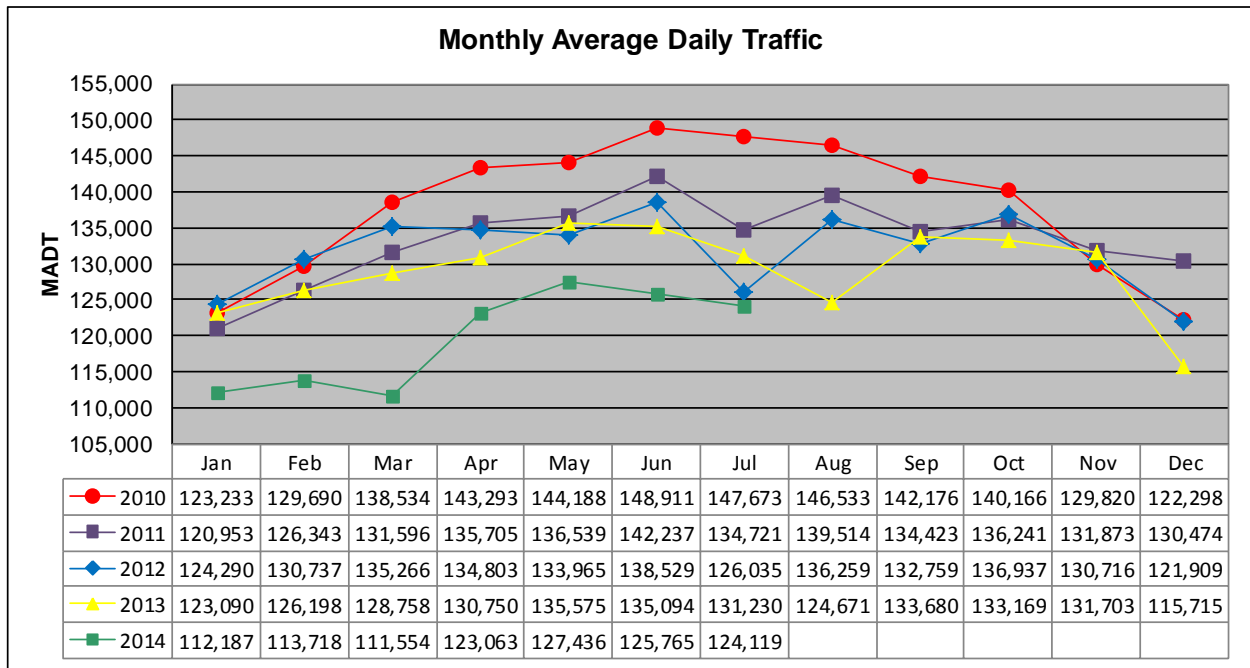


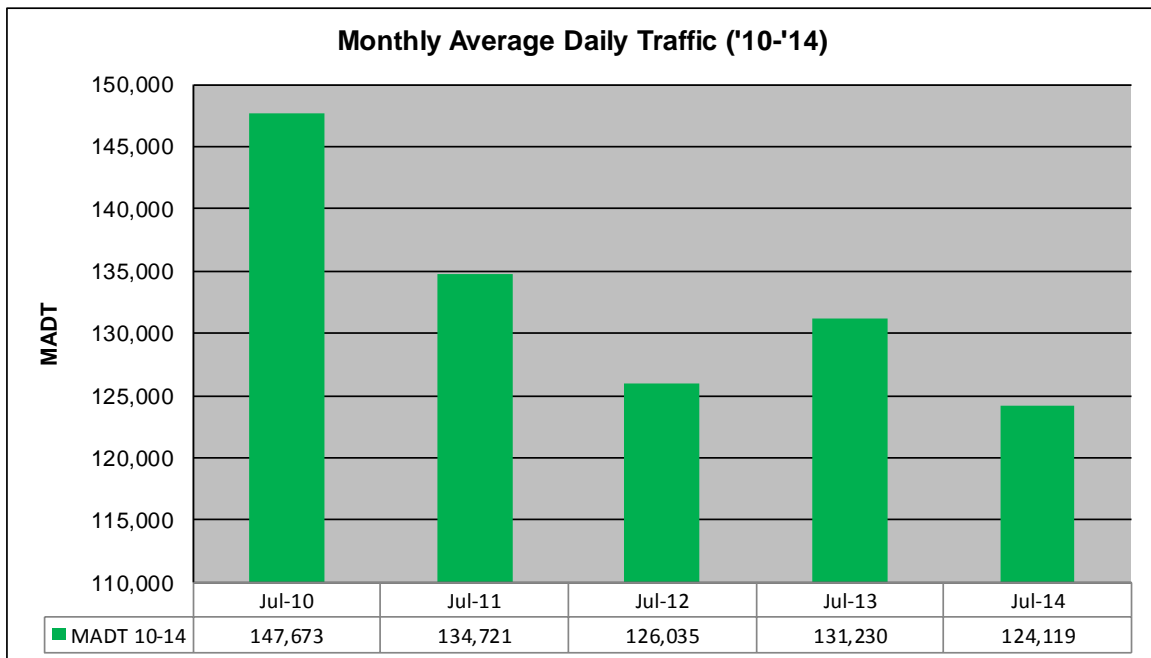
MONTHLY REPORT, STATION NO. 303 (ATR)

JULY 2014

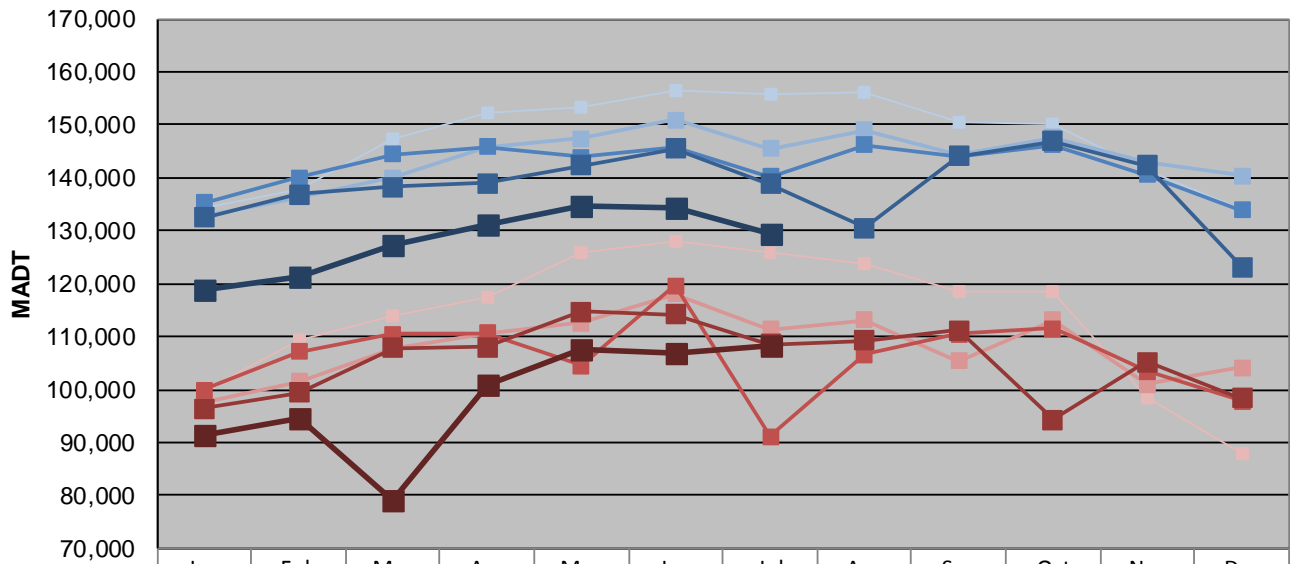
Station Measurement: VOLUME		
Route: I-35E	Route Direction: N/S	Lanes: 6
County: Ramsey		Closest City: St Paul
Functional Class: Urban Principal Arterial - Interstate		
Location: S OF MSAS109 (E ARLINGTON AVE) IN ST PAUL		
Ref Post: 109+00.835	True Mile: 109.893	Sequence No. 9836
Volume: 3,847,681		MADT: 124,119
Weekday (M-F) MADT: 129,276		Weekend (Sa-Su) MADT: 108,206



Note: Decrease in traffic July 2012, August 2013, and February/March/July 2014 due to construction on I-35E



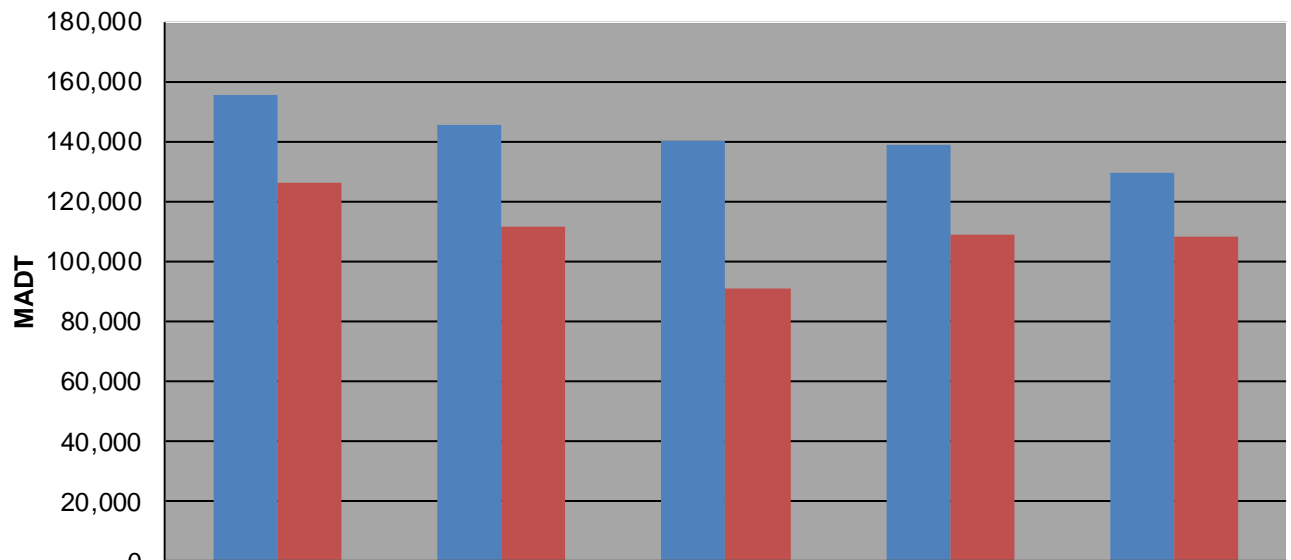
Weekday (WD)/Weekend (WE) Monthly Average Daily Traffic



	Jan	Feb	Mar	Apr	May	Jun	Jul	Aug	Sep	Oct	Nov	Dec
'10 WD	134,406	137,836	147,454	152,314	153,384	156,518	155,706	156,284	150,554	150,100	141,288	133,810
'10 WE	99,982	109,324	113,960	117,588	126,018	128,078	125,904	123,924	118,322	118,400	98,586	87,980
'11 WD	132,586	136,270	140,092	145,776	147,338	150,904	145,518	148,998	144,306	147,592	142,806	140,374
'11 WE	97,638	101,502	107,680	110,742	112,630	118,000	111,382	113,168	105,360	113,044	100,982	104,194
'12 WD	135,318	139,948	144,506	145,768	143,978	145,906	140,202	146,268	143,884	146,156	140,582	133,864
'12 WE	99,982	107,190	110,406	110,720	104,494	119,572	91,114	106,594	110,512	111,504	103,494	97,834
'13 WD	132,498	136,886	138,196	139,018	142,236	145,560	138,878	130,570	144,116	146,820	142,392	123,084
'13 WE	96,464	99,480	107,902	107,950	114,782	114,162	108,540	109,280	111,160	94,312	105,278	98,366
'14 WD	118,890	121,424	127,318	131,128	134,758	134,460	129,276					
'14 WE	91,462	94,454	78,988	100,772	107,710	106,824	108,206					

Note: 'Weekday' defined as Monday-Friday, 'Weekend' defined as Saturday-Sunday

Weekday/Weekend Monthly Average Daily Traffic ('10-'14)



	Jul-10	Jul-11	Jul-12	Jul-13	Jul-14
Weekday	155,706	145,518	140,202	138,878	129,276
Weekend	125,904	111,382	91,114	108,540	108,206