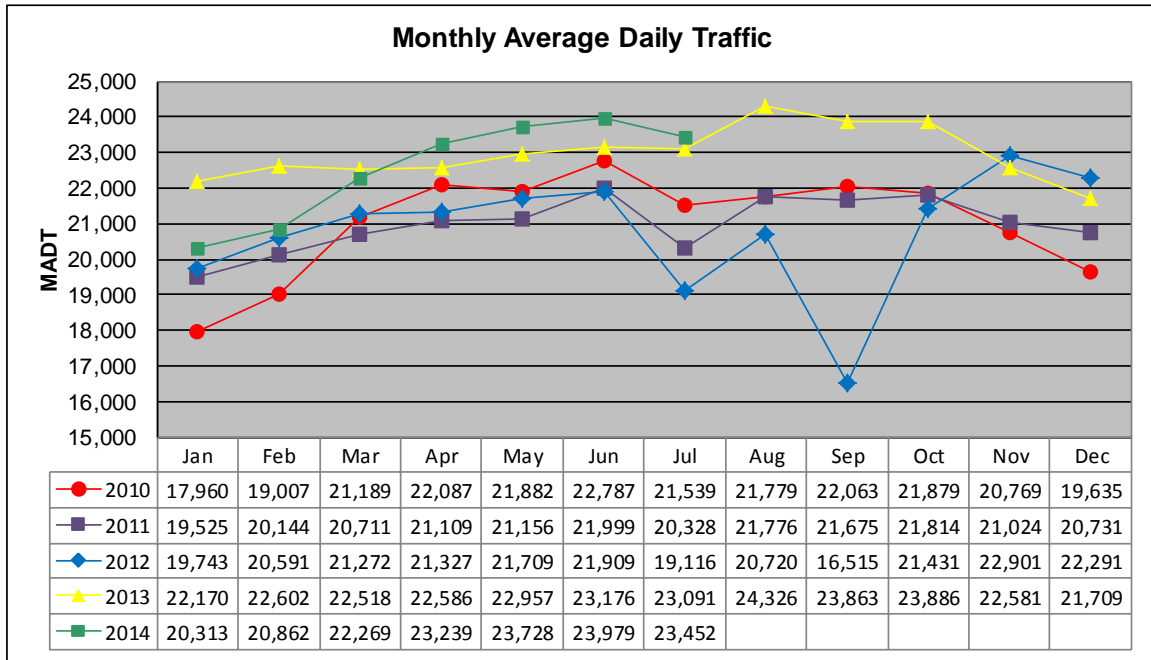


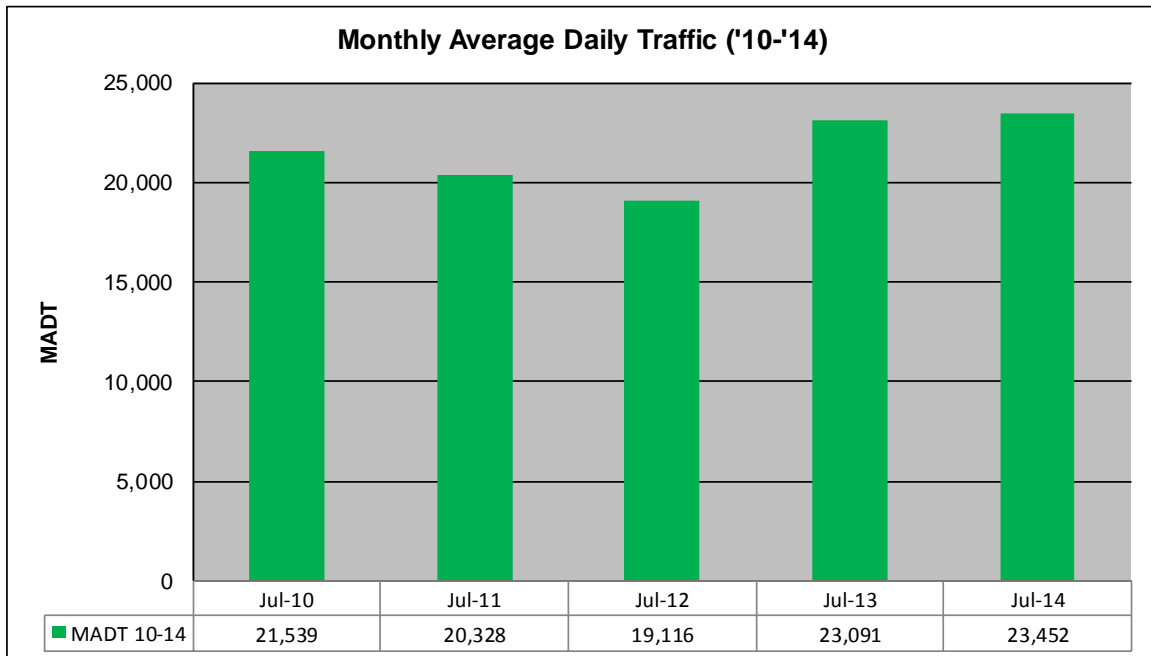
MONTHLY REPORT, STATION NO. 212 (ATR)

JULY 2014

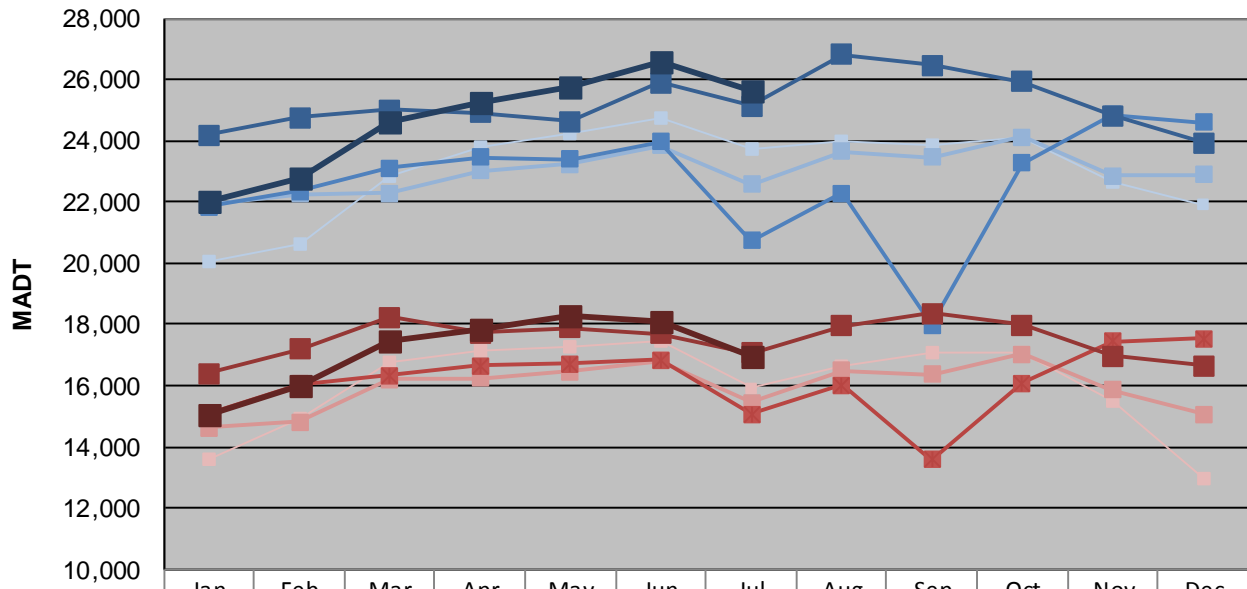
Station Measurement: VOLUME/SPEED/CLASS		
Route: TH 14	Route Direction: E/W	Lanes: 6
County: Olmsted	Closest City: Rochester	
Functional Class: Urban Other Principal Arterial		
Location: E OF CR104 (60TH AVE NW), W OF ROCHESTER		
Ref Post: 207+00.260	True Mile: 209.205	Sequence No. 6755
Volume: 727,002		MADT: 23,452
Weekday (M-F) MADT: 25,628		Weekend (Sa-Su) MADT: 16,928



Note: Decrease in traffic July to September 2012 due to construction on TH 14; Increase in traffic beginning November 2012 due to an addition of two lanes at the site



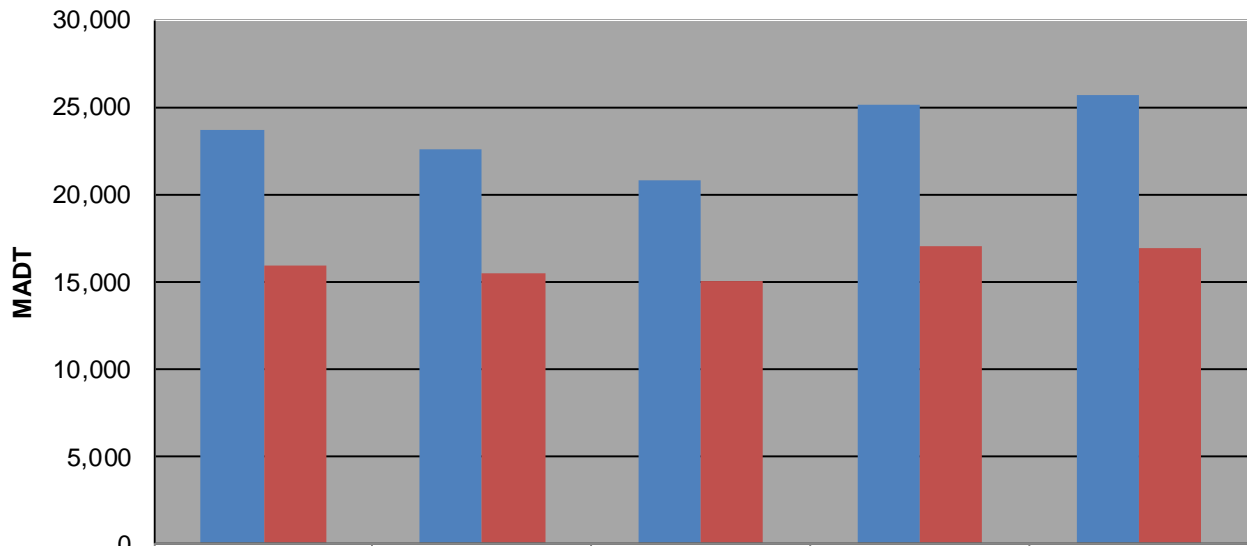
Weekday (WD)/Weekend (WE) Monthly Average Daily Traffic



	Jan	Feb	Mar	Apr	May	Jun	Jul	Aug	Sep	Oct	Nov	Dec
'10 WD	20,050	20,650	22,820	23,810	24,210	24,730	23,704	23,982	23,846	24,082	22,664	21,922
'10 WE	13,620	14,902	16,738	17,170	17,240	17,442	15,916	16,656	17,088	17,096	15,518	12,950
'11 WD	21,938	22,266	22,304	23,032	23,248	23,850	22,586	23,666	23,476	24,140	22,858	22,902
'11 WE	14,618	14,810	16,222	16,250	16,466	16,822	15,442	16,490	16,356	17,038	15,852	15,064
'12 WD	21,850	22,338	23,122	23,468	23,392	23,966	20,752	22,294	17,982	23,266	24,868	24,616
'12 WE	15,082	16,060	16,334	16,638	16,720	16,848	15,078	16,032	13,582	16,074	17,452	17,524
'13 WD	24,180	24,756	25,024	24,902	24,646	25,914	25,132	26,818	26,464	25,946	24,832	23,922
'13 WE	16,406	17,180	18,230	17,728	17,874	17,702	17,066	17,958	18,372	17,972	16,966	16,662
'14 WD	22,038	22,802	24,608	25,224	25,754	26,604	25,628					
'14 WE	15,052	16,012	17,460	17,824	18,282	18,124	16,928					

Note: 'Weekday' defined as Monday-Friday, 'Weekend' defined as Saturday-Sunday

Weekday/Weekend Monthly Average Daily Traffic ('10-'14)



	Jul-10	Jul-11	Jul-12	Jul-13	Jul-14
Weekday	23,704	22,586	20,752	25,132	25,628
Weekend	15,916	15,442	15,078	17,066	16,928