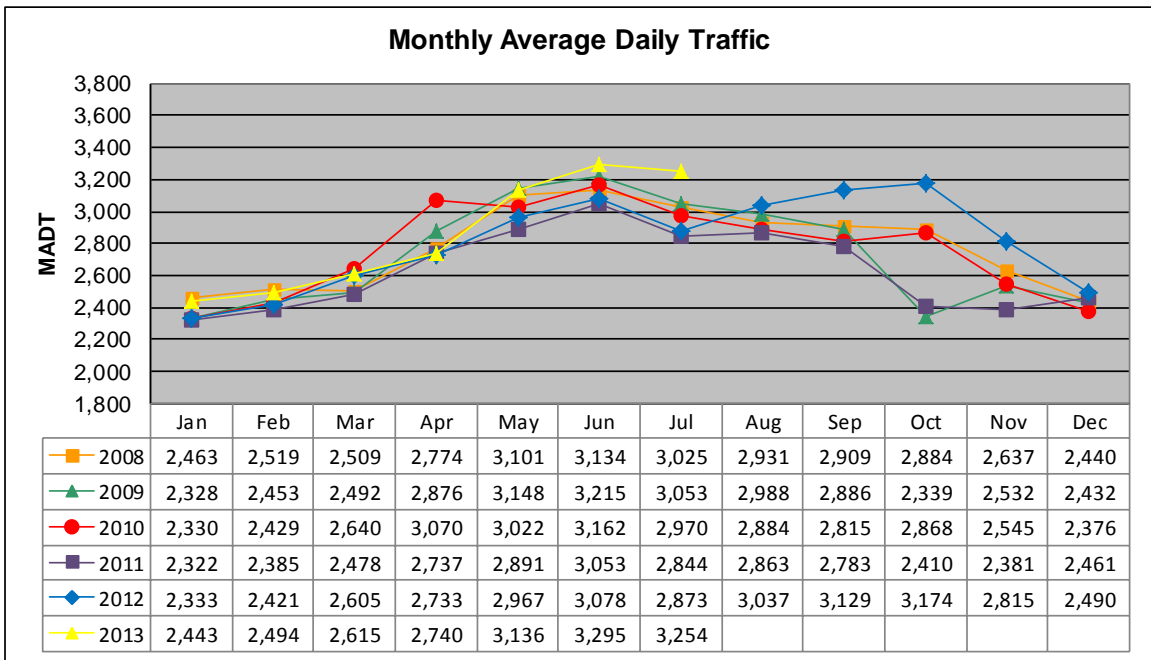


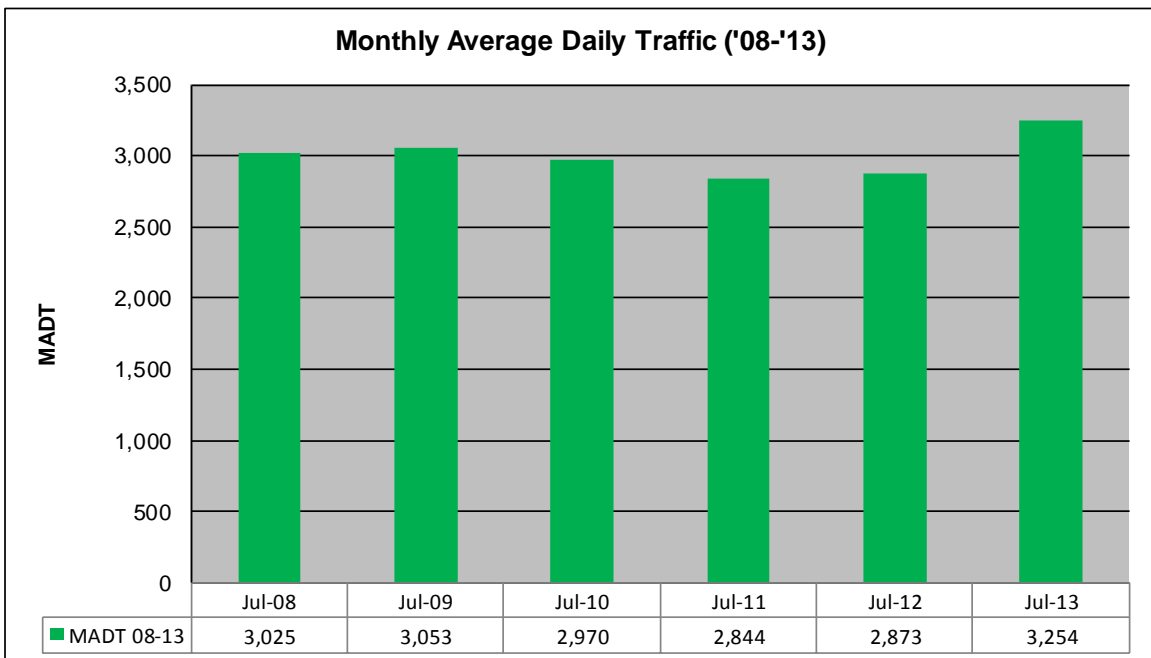
MONTHLY REPORT, STATION NO. 410 (ATR)

JULY 2013

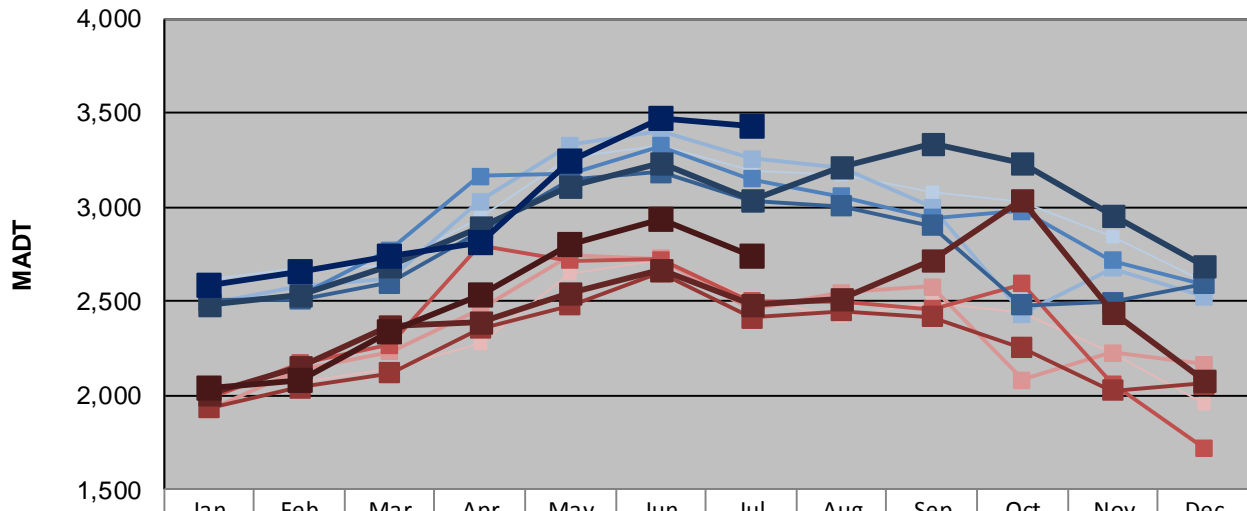
| | | |
|---|--------------------------|------------------------------------|
| Station Measurement: VOLUME/SPEED/CLASS | | |
| Route: CSAH 23 | Route Direction: N/S | Lanes: 2 |
| County: Scott | Closest City: Prior Lake | |
| Functional Class: Rural Minor Arterial | | |
| Location: S OF CSAH68 (190TH ST E), S OF PRIOR LAKE | | |
| Ref Post: 008+00.850 | True Mile: 8.85 | Sequence No. 9888 |
| Volume: 100,875 | | MADT: 3,254 |
| Weekday (M-F) MADT: 3,434 | | Weekend (Sa-Su) MADT: 2,736 |



Note: Increase in traffic September/October 2012 due to detour from TH 13



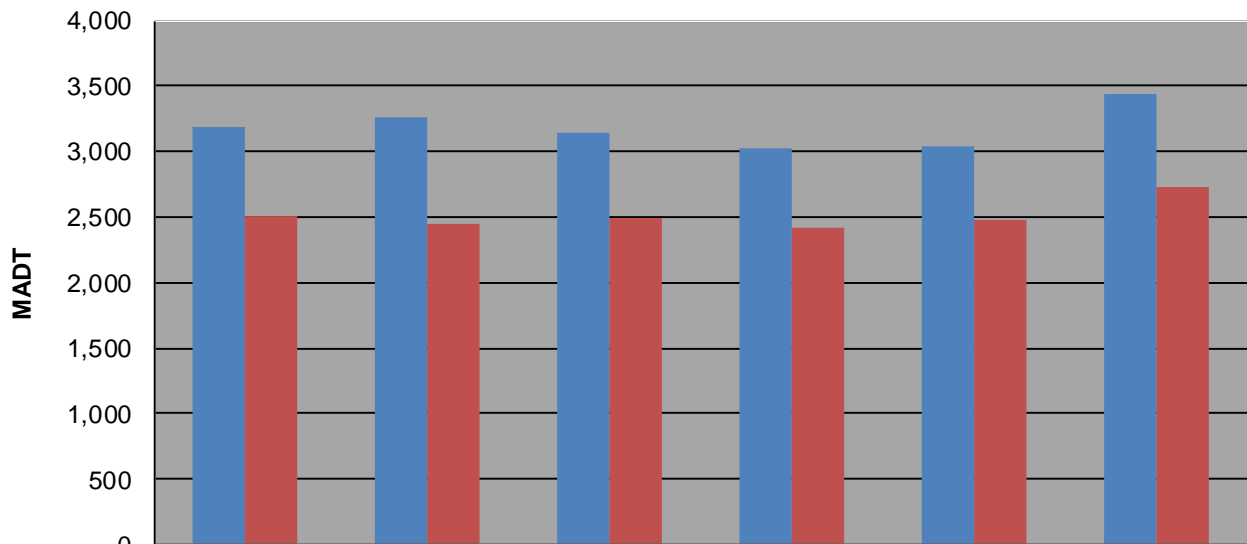
Weekday (WD)/Weekend (WE) Monthly Average Daily Traffic



| | Jan | Feb | Mar | Apr | May | Jun | Jul | Aug | Sep | Oct | Nov | Dec |
|--------|-------|-------|-------|-------|-------|-------|-------|-------|-------|-------|-------|-------|
| '08 WD | 2,618 | 2,682 | 2,688 | 2,940 | 3,266 | 3,326 | 3,192 | 3,170 | 3,074 | 3,026 | 2,846 | 2,610 |
| '08 WE | 2,038 | 2,072 | 2,146 | 2,276 | 2,642 | 2,720 | 2,510 | 2,422 | 2,488 | 2,440 | 2,220 | 1,954 |
| '09 WD | 2,482 | 2,578 | 2,622 | 3,028 | 3,330 | 3,404 | 3,256 | 3,206 | 2,998 | 2,432 | 2,674 | 2,526 |
| '09 WE | 1,924 | 2,140 | 2,230 | 2,454 | 2,744 | 2,726 | 2,452 | 2,544 | 2,574 | 2,080 | 2,226 | 2,166 |
| '10 WD | 2,494 | 2,532 | 2,772 | 3,166 | 3,180 | 3,322 | 3,146 | 3,054 | 2,944 | 2,980 | 2,714 | 2,586 |
| '10 WE | 1,986 | 2,172 | 2,268 | 2,796 | 2,718 | 2,720 | 2,498 | 2,492 | 2,458 | 2,590 | 2,062 | 1,720 |
| '11 WD | 2,502 | 2,512 | 2,596 | 2,870 | 3,146 | 3,184 | 3,032 | 3,002 | 2,902 | 2,480 | 2,496 | 2,592 |
| '11 WE | 1,934 | 2,040 | 2,118 | 2,356 | 2,478 | 2,654 | 2,412 | 2,448 | 2,418 | 2,254 | 2,028 | 2,064 |
| '12 WD | 2,486 | 2,528 | 2,684 | 2,896 | 3,114 | 3,232 | 3,040 | 3,214 | 3,336 | 3,238 | 2,956 | 2,692 |
| '12 WE | 2,008 | 2,148 | 2,370 | 2,390 | 2,546 | 2,668 | 2,484 | 2,516 | 2,716 | 3,040 | 2,444 | 2,078 |
| '13 WD | 2,588 | 2,660 | 2,734 | 2,816 | 3,240 | 3,474 | 3,434 | | | | | |
| '13 WE | 2,038 | 2,080 | 2,342 | 2,534 | 2,802 | 2,936 | 2,736 | | | | | |

Note: 'Weekday' defined as Monday-Friday, 'Weekend' defined as Saturday-Sunday

Weekday/Weekend Monthly Average Daily Traffic ('08-'13)



| | Jul-08 | Jul-09 | Jul-10 | Jul-11 | Jul-12 | Jul-13 |
|---------|--------|--------|--------|--------|--------|--------|
| Weekday | 3,192 | 3,256 | 3,146 | 3,032 | 3,040 | 3,434 |
| Weekend | 2,510 | 2,452 | 2,498 | 2,412 | 2,484 | 2,736 |