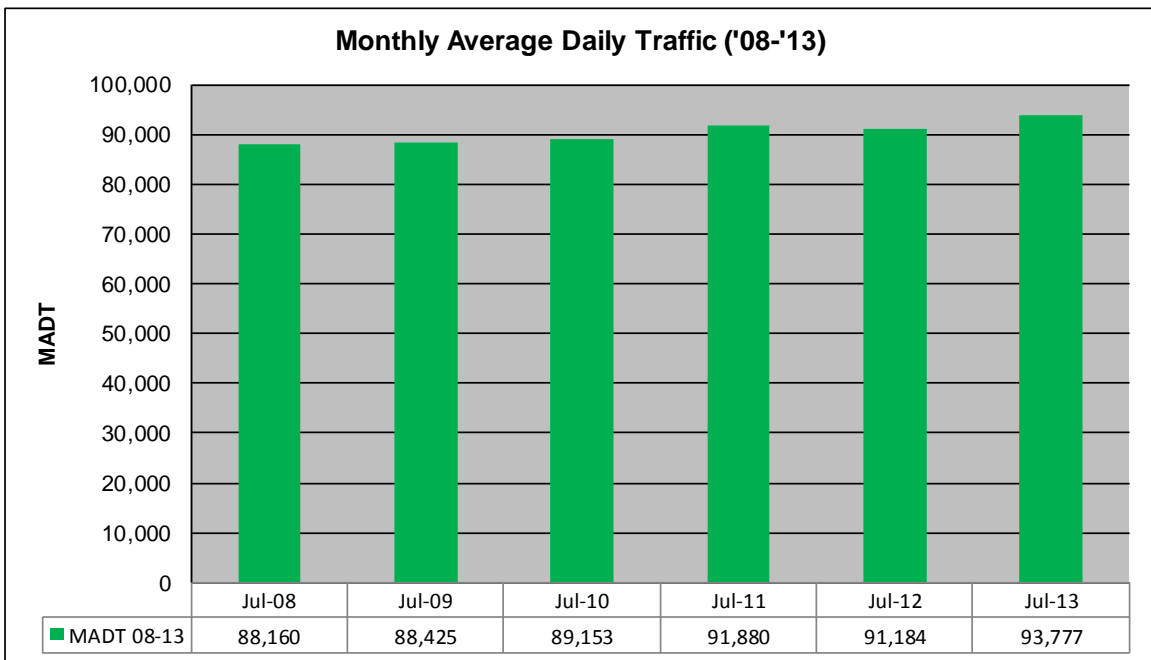
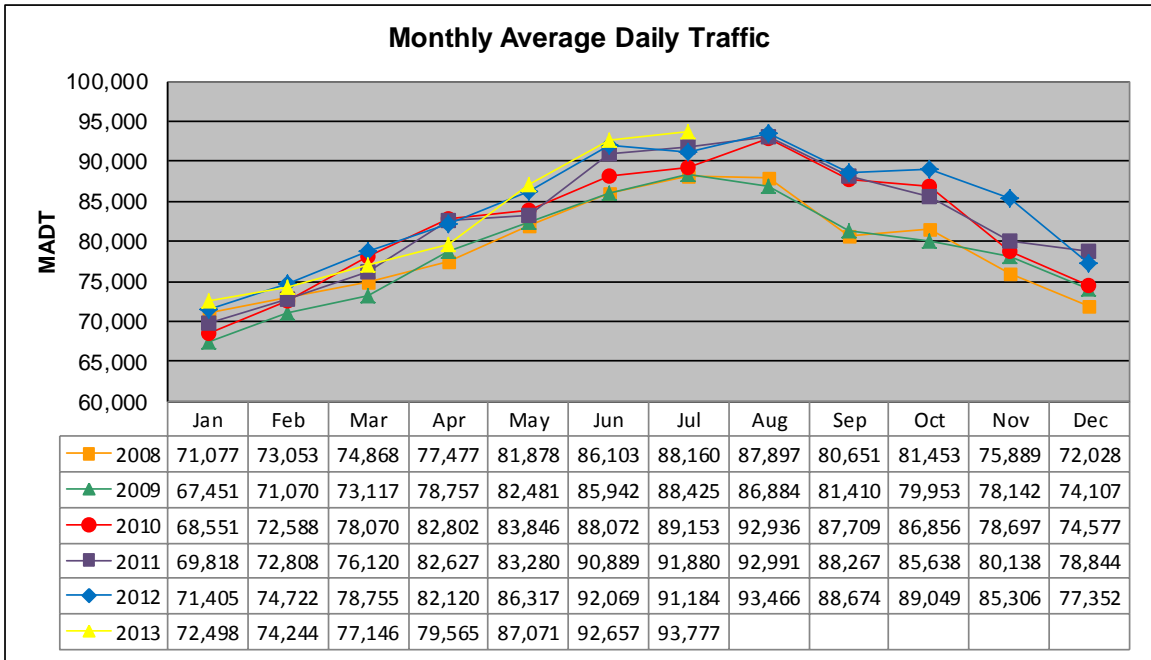


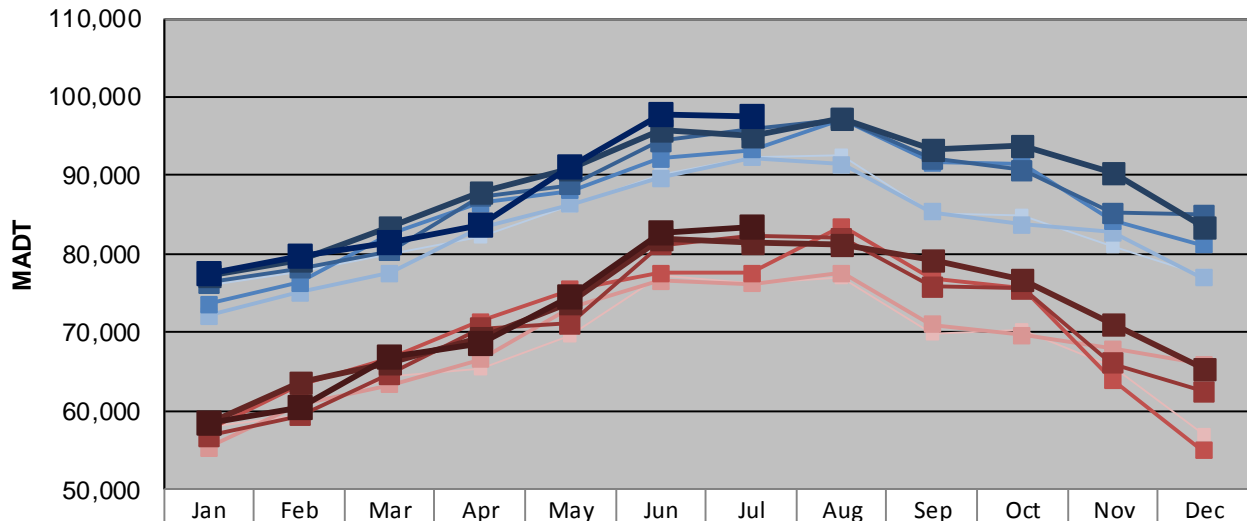
MONTHLY REPORT, STATION NO. 354 (ATR)

JULY 2013

| | | |
|---|----------------------|-------------------------------------|
| Station Measurement: VOLUME/SPEED/CLASS | | |
| Route: I-94 | Route Direction: E/W | Lanes: 6 |
| County: Washington | | Closest City: Woodbury |
| Functional Class: Urban Principal Arterial - Interstate | | |
| Location: W OF MSAS127 (COTTAGE GROVE DR) IN WOODBURY | | |
| Ref Post: 252+00.500 | True Mile: 253.096 | Sequence No. 9861 |
| Volume: 2,907,087 | | MADT: 93,777 |
| Weekday (M-F) MADT: 97,428 | | Weekend (Sa-Su) MADT: 83,390 |



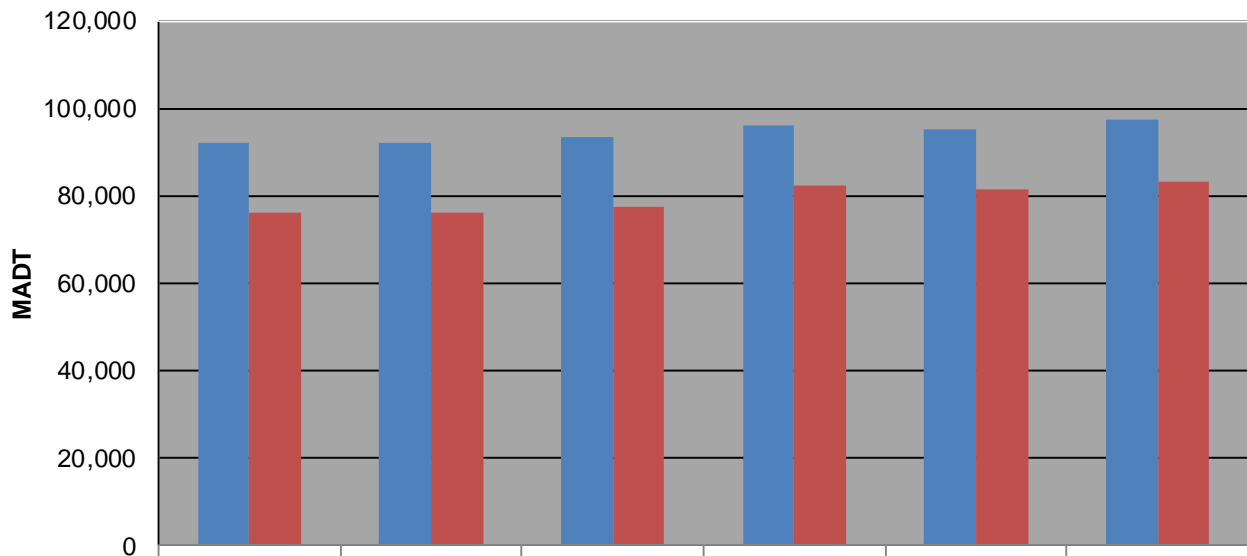
Weekday (WD)/Weekend (WE) Monthly Average Daily Traffic



| | Jan | Feb | Mar | Apr | May | Jun | Jul | Aug | Sep | Oct | Nov | Dec |
|--------|--------|--------|--------|--------|--------|--------|--------|--------|--------|--------|--------|--------|
| '08 WD | 75,922 | 77,760 | 80,088 | 82,106 | 86,270 | 90,082 | 92,238 | 92,594 | 85,060 | 84,870 | 81,062 | 77,334 |
| '08 WE | 58,018 | 59,502 | 64,394 | 65,304 | 69,672 | 77,234 | 76,238 | 77,050 | 69,724 | 70,402 | 65,544 | 57,066 |
| '09 WD | 72,186 | 75,154 | 77,554 | 83,288 | 86,342 | 89,720 | 92,278 | 91,452 | 85,404 | 83,748 | 82,766 | 77,000 |
| '09 WE | 55,292 | 60,860 | 63,374 | 66,566 | 73,286 | 76,558 | 76,222 | 77,552 | 71,064 | 69,716 | 67,928 | 65,892 |
| '10 WD | 73,630 | 76,338 | 82,478 | 86,492 | 88,134 | 92,122 | 93,266 | 97,130 | 91,636 | 91,594 | 84,242 | 81,188 |
| '10 WE | 57,646 | 63,218 | 66,716 | 71,382 | 75,500 | 77,602 | 77,566 | 83,524 | 76,940 | 75,690 | 64,020 | 54,954 |
| '11 WD | 76,276 | 78,154 | 80,408 | 87,378 | 88,804 | 94,438 | 95,910 | 97,284 | 92,118 | 90,670 | 85,182 | 85,008 |
| '11 WE | 56,844 | 59,416 | 64,668 | 70,464 | 71,172 | 81,102 | 82,308 | 82,006 | 75,894 | 75,608 | 66,038 | 62,464 |
| '12 WD | 77,226 | 79,142 | 83,328 | 87,846 | 90,914 | 95,812 | 95,182 | 97,380 | 93,396 | 93,838 | 90,398 | 83,548 |
| '12 WE | 58,538 | 63,762 | 66,240 | 69,226 | 73,726 | 82,062 | 81,484 | 81,182 | 79,232 | 76,772 | 71,048 | 65,438 |
| '13 WD | 77,628 | 79,774 | 81,430 | 83,608 | 91,004 | 97,660 | 97,428 | | | | | |
| '13 WE | 58,414 | 60,422 | 66,980 | 68,692 | 74,580 | 82,652 | 83,390 | | | | | |

Note: 'Weekday' defined as Monday-Friday, 'Weekend' defined as Saturday-Sunday

Weekday/Weekend Monthly Average Daily Traffic ('08-'13)



| | Jul-08 | Jul-09 | Jul-10 | Jul-11 | Jul-12 | Jul-13 |
|---------|--------|--------|--------|--------|--------|--------|
| Weekday | 92,238 | 92,278 | 93,266 | 95,910 | 95,182 | 97,428 |
| Weekend | 76,238 | 76,222 | 77,566 | 82,308 | 81,484 | 83,390 |